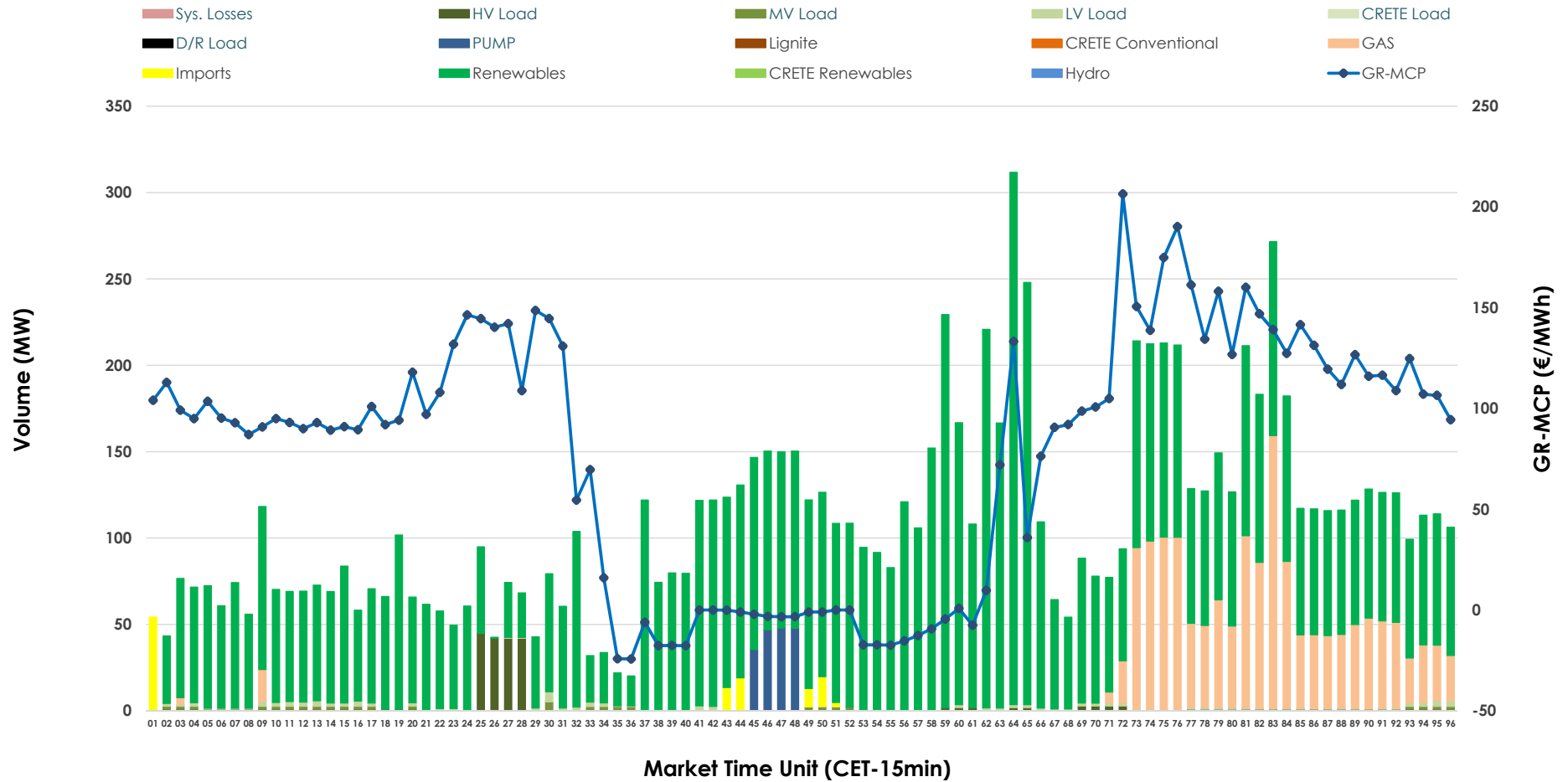


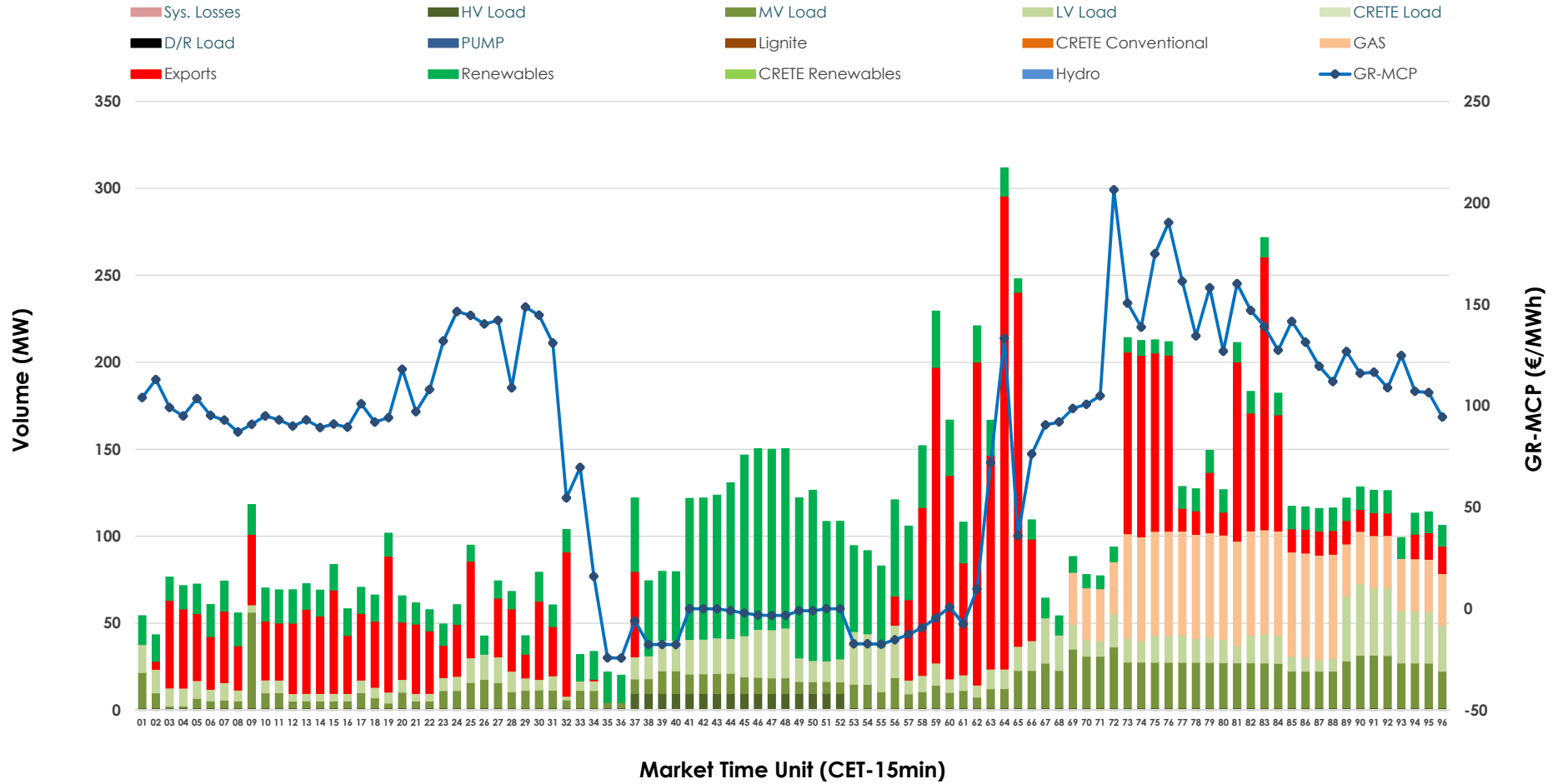


# IDA '1' Market Outlook

13.03.2026 IDA '1' Market - Sell



### 13.03.2026 IDA '1' Market - Buy



### GR Bidding Zone Weekly Figures

Delivery Day	07.03	08.03	09.03	10.03	11.03	12.03	13.03
	↘ -4%	→ 0%	→ 0%	↗ 2%	↗ 16%	↗ 18%	↘ -28%
<b>Avg.MCP (€/MWh)</b>	77.97	77.99	78.31	79.81	92.43	109.46	78.36
<b>Max.MCP (€/MWh)</b>	161.96	163.76	251.15	250.86	243.25	257.52	206.44
<b>Min.MCP (€/MWh)</b>	-18.65	-15.11	-15.00	-14.90	-6.99	-9.65	-24.30
	↘ -53%	↘ -14%	↗ 45%	↗ 31%	↘ -46%	↗ 79%	↗ 14%
<b>Tot.Vol(GWh)</b>	2.95	2.53	3.68	4.82	2.58	4.61	5.27

### Trades by Order Type

Delivery Day		07.03	08.03	09.03	10.03	11.03	12.03	13.03	
<b>Ord Price Type</b>		<b>Sell &amp; Buy Trades in (GWh) per Price Type</b>							<b>(%)</b>
<b>PPT</b>	(S)	0.000	0.000	0.000	0.000	0.000	0.000	0.000	0.00%
<b>HBD</b>	(S)	1.263	0.957	1.689	2.271	1.087	1.942	2.606	98.90%
<b>BLK</b>	(S)	0.000	0.000	0.000	0.000	0.000	0.000	0.000	0.00%
<b>CPL</b>	(S)	0.214	0.307	0.149	0.140	0.203	0.361	0.029	1.10%
<b>PPT</b>	(B)	0.000	0.000	0.000	0.000	0.000	0.000	0.000	0.00%
<b>HBD</b>	(B)	1.355	1.173	1.678	2.365	1.124	2.233	1.733	65.75%
<b>BLK</b>	(B)	0.000	0.000	0.000	0.000	0.000	0.000	0.000	0.00%
<b>CPL</b>	(B)	0.123	0.090	0.160	0.046	0.166	0.070	0.902	34.25%
		<b>Sell &amp; Buy Orders Traded per Price Type</b>							<b>(%)</b>
<b>PPT</b>	(S)	0	0	0	0	0	0	0	0.00%
<b>HBD</b>	(S)	220	64	89	435	222	286	300	100.00%
<b>BLK</b>	(S)	0	0	0	0	0	0	0	0.00%
<b>PPT</b>	(B)	0	0	0	0	0	0	0	0.00%
<b>HBD</b>	(B)	771	840	840	1017	922	927	1203	100.00%
<b>BLK</b>	(B)	0	0	0	0	0	0	0	0.00%

**MCP** Market Clearing Price (€/MWh)  
**PPT** Priority Price-Taking  
**HBD** Hybrid  
**BLK** Block  
**CPL** Market Coupling Flow

### Trade's Volume Mix

		Sell - MWh	Buy - MWh	
<b>Lignite</b>	(0.0%)	0	0	(0.0%)
<b>Crete Conv.</b>	(0.0%)	0	0	(0.0%)
<b>Gas</b>	(14.9%)	392	330	(12.5%)
<b>Hydro</b>	(0.0%)	0	0	(0.0%)
<b>Imports</b>	(1.1%)	29		
<b>RES</b>	(78.7%)	2,074	639	(24.3%)
<b>Crete RES</b>	(0.0%)	0	0	(0.0%)
<b>HV Load</b>	(2.2%)	57	68	(2.6%)
<b>MV Load</b>	(0.5%)	14	354	(13.4%)
<b>LV Load</b>	(1.0%)	25	341	(12.9%)
<b>Crete Load</b>	(0.0%)	0	0	(0.0%)
<b>Pumping</b>	(1.7%)	44	0	(0.0%)
<b>Exports</b>			902	(34.2%)
<b>Sys.Losses</b>	(0.0%)	0	0	(0.0%)
<b>D/R Load</b>	(0.0%)	0	0	(0.0%)

