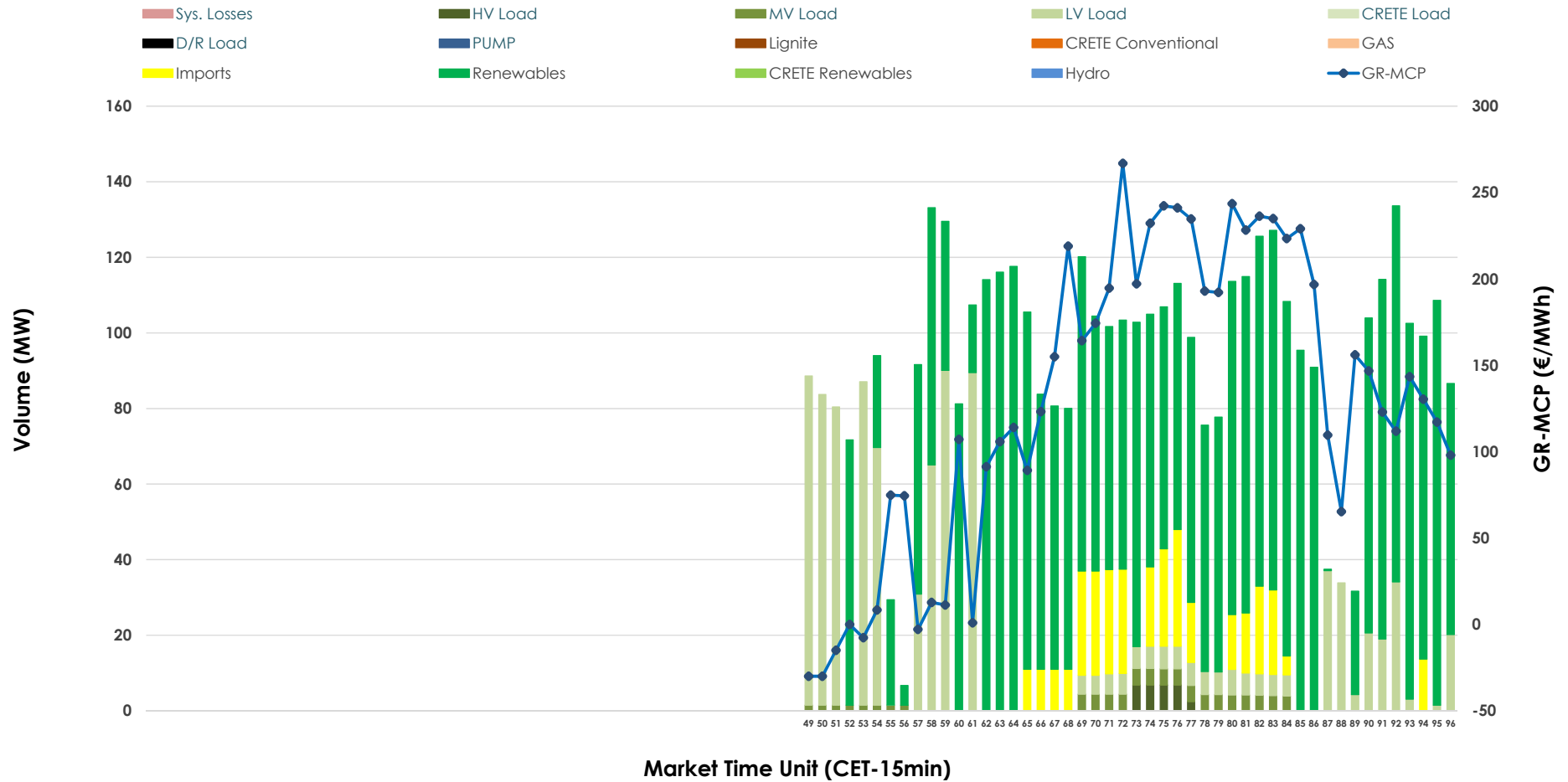


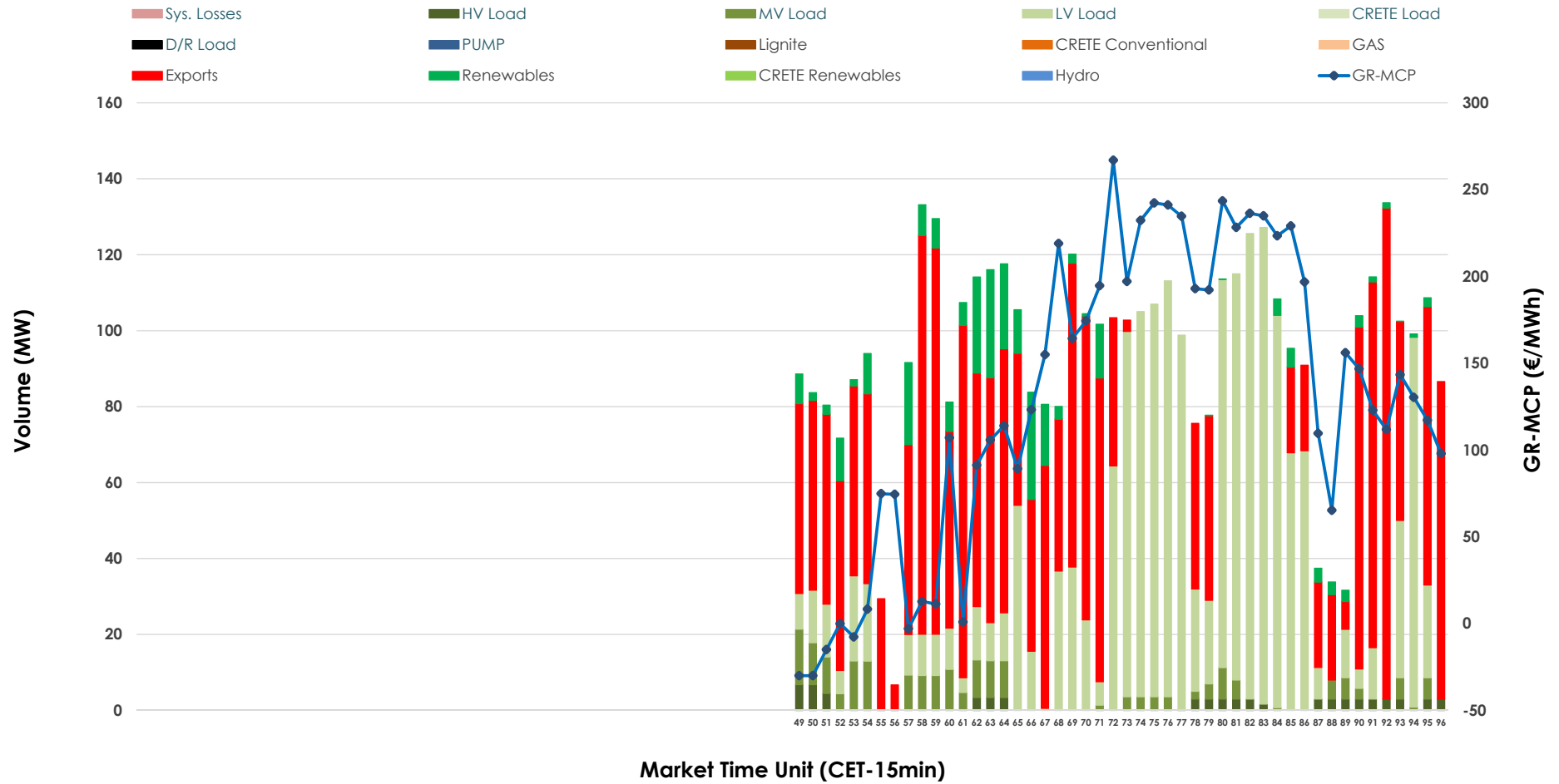


# IDA '3' Market Outlook

12.03.2026 IDA '3' Market - Sell



### 12.03.2026 IDA '3' Market - Buy



### GR Bidding Zone Weekly Figures

Delivery Day	06.03	07.03	08.03	09.03	10.03	11.03	12.03
	👇 -5%	👆 11%	👇 -14%	👆 11%	👆 15%	👆 21%	👆 5%
<b>Avg.MCP (€/MWh)</b>	83.98	93.54	80.36	88.82	101.98	123.76	129.75
<b>Max.MCP (€/MWh)</b>	198.96	177.27	144.90	249.48	238.89	247.55	266.91
<b>Min.MCP (€/MWh)</b>	-35.00	-11.70	-14.97	-17.30	-25.24	-7.31	-29.99
	👆 77%	👇 -32%	👉 -1%	👉 0%	👆 35%	👇 -35%	👆 63%
<b>Tot.Vol(GWh)</b>	2.35	1.59	1.58	1.58	2.13	1.39	2.26

### Trades by Order Type

Delivery Day		06.03	07.03	08.03	09.03	10.03	11.03	12.03	
<b>Ord Price Type</b>		Sell & Buy Trades in (GWh) per Price Type							(%)
<b>PPT</b>	(S)	0.000	0.000	0.000	0.000	0.000	0.000	0.000	0.00%
<b>HBD</b>	(S)	1.125	0.543	0.744	0.695	0.747	0.399	1.044	92.42%
<b>BLK</b>	(S)	0.000	0.000	0.000	0.000	0.000	0.000	0.000	0.00%
<b>CPL</b>	(S)	0.051	0.254	0.047	0.095	0.321	0.296	0.086	7.58%
<b>PPT</b>	(B)	0.000	0.000	0.000	0.000	0.000	0.000	0.000	0.00%
<b>HBD</b>	(B)	1.112	0.651	0.679	0.691	0.924	0.467	0.601	53.23%
<b>BLK</b>	(B)	0.000	0.000	0.000	0.000	0.000	0.000	0.000	0.00%
<b>CPL</b>	(B)	0.064	0.146	0.112	0.099	0.143	0.228	0.528	46.77%
		Sell & Buy Orders Traded per Price Type							(%)
<b>PPT</b>	(S)	0	0	0	0	0	0	0	0.00%
<b>HBD</b>	(S)	162	96	107	161	181	137	224	100.00%
<b>BLK</b>	(S)	0	0	0	0	0	0	0	0.00%
<b>PPT</b>	(B)	0	0	0	0	0	0	0	0.00%
<b>HBD</b>	(B)	217	168	187	153	234	245	167	100.00%
<b>BLK</b>	(B)	0	0	0	0	0	0	0	0.00%

- MCP** Market Clearing Price (€/MWh)
- PPT** Priority Price-Taking
- HBD** Hybrid
- BLK** Block
- CPL** Market Coupling Flow

### Trade's Volume Mix

	Sell - MWh	Buy - MWh	
<b>Lignite</b> (0.0%)	0	0	(0.0%)
<b>Crete Conv.</b> (0.0%)	0	0	(0.0%)
<b>Gas</b> (0.0%)	0	0	(0.0%)
<b>Hydro</b> (0.0%)	0	0	(0.0%)
<b>Imports</b> (7.6%)	86		
<b>RES</b> (69.1%)	781	67	(5.9%)
<b>Crete RES</b> (0.0%)	0	0	(0.0%)
<b>HV Load</b> (0.7%)	7	18	(1.6%)
<b>MV Load</b> (1.8%)	20	50	(4.4%)
<b>LV Load</b> (20.9%)	236	467	(41.3%)
<b>Crete Load</b> (0.0%)	0	0	(0.0%)
<b>Pumping</b> (0.0%)	0	0	(0.0%)
<b>Exports</b>		528	(46.8%)
<b>Sys.Losses</b> (0.0%)	0	0	(0.0%)
<b>D/R Load</b> (0.0%)	0	0	(0.0%)

