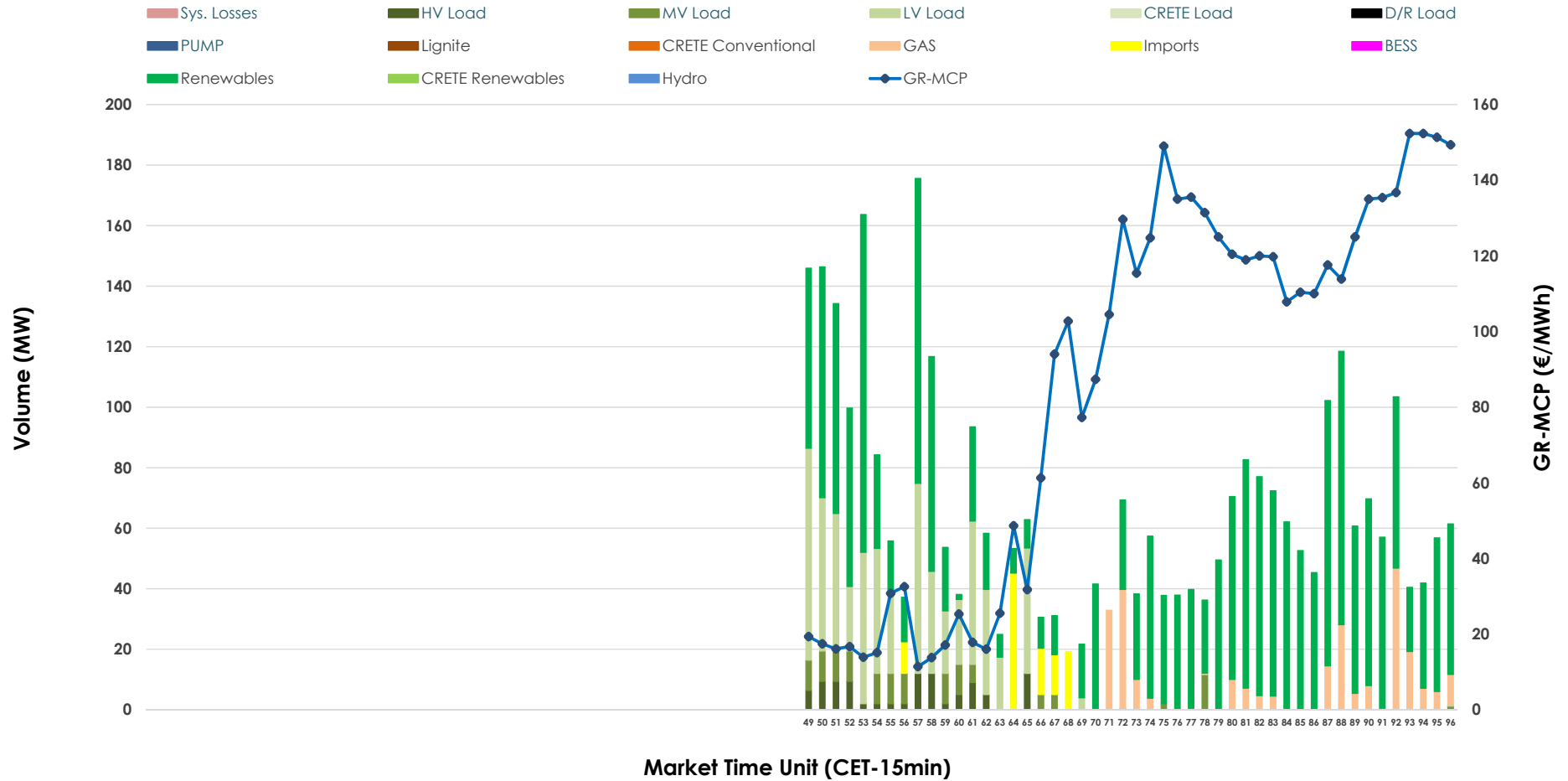


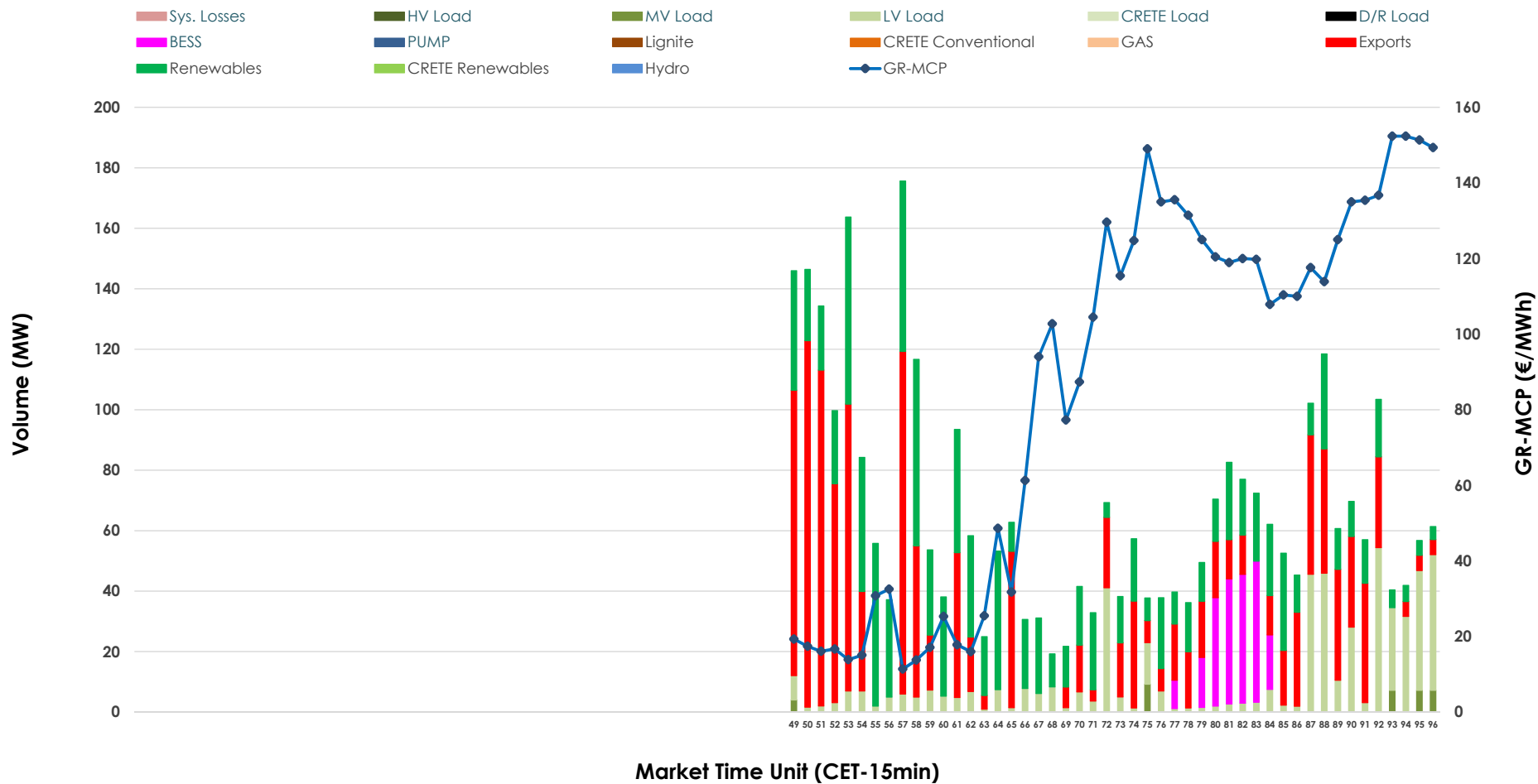


IDA '3' Market Outlook

22.05.2026 IDA '3' Market - Sell



22.05.2026 IDA '3' Market - Buy



GR Bidding Zone Weekly Figures

Delivery Day	16.05	17.05	18.05	19.05	20.05	21.05	22.05
	👇 -18%	👆 3%	👆 63%	👆 12%	👇 -36%	👆 32%	👇 -22%
Avg.MCP (€/MWh)	69.38	71.12	115.83	129.53	83.15	110.01	85.80
Max.MCP (€/MWh)	132.56	146.50	272.82	216.80	196.97	237.02	152.36
Min.MCP (€/MWh)	1.52	-15.83	-5.23	63.92	-4.78	3.90	11.39
	👇 -7%	👇 -48%	👆 96%	👆 26%	👇 -37%	👆 196%	👇 -69%
Tot.Vol(GWh)	2.18	1.14	2.23	2.81	1.78	5.28	1.63

Trades by Order Type

Delivery Day		16.05	17.05	18.05	19.05	20.05	21.05	22.05	
Ord Price Type		Sell & Buy Trades in (GWh) per Price Type							(%)
PPT	(S)	0.000	0.000	0.000	0.000	0.000	0.000	0.000	0.00%
HBD	(S)	1.089	0.304	0.670	0.893	0.836	2.108	0.789	96.83%
BLK	(S)	0.000	0.000	0.000	0.000	0.000	0.000	0.000	0.00%
CPL	(S)	0.000	0.266	0.446	0.511	0.055	0.530	0.026	3.17%
PPT	(B)	0.000	0.000	0.000	0.000	0.000	0.000	0.000	0.00%
HBD	(B)	0.603	0.446	1.071	1.185	0.635	2.179	0.478	58.64%
BLK	(B)	0.000	0.000	0.000	0.000	0.000	0.000	0.000	0.00%
CPL	(B)	0.486	0.124	0.046	0.219	0.256	0.459	0.337	41.36%
		Sell & Buy Orders Traded per Price Type							(%)
PPT	(S)	0	0	0	0	0	0	0	0.00%
HBD	(S)	220	81	183	126	233	292	144	100.00%
BLK	(S)	0	0	0	0	0	0	0	0.00%
PPT	(B)	0	0	0	0	0	0	0	0.00%
HBD	(B)	129	163	307	388	163	194	188	100.00%
BLK	(B)	0	0	0	0	0	0	0	0.00%

- MCP** Market Clearing Price (€/MWh)
- PPT** Priority Price-Taking
- HBD** Hybrid
- BLK** Block
- CPL** Market Coupling Flow

Trade's Volume Mix

		Sell - MWh	Buy - MWh	
Lignite	(0.0%)	0	0	(0.0%)
Crete Conv.	(0.0%)	0	0	(0.0%)
Gas	(7.8%)	64	0	(0.0%)
Hydro	(0.0%)	0	0	(0.0%)
Imports	(3.2%)	26		
RES	(64.1%)	522	281	(34.5%)
Crete RES	(0.0%)	0	0	(0.0%)
BESS	(0.0%)	0	53	(6.5%)
HV Load	(3.1%)	25	0	(0.0%)
MV Load	(3.7%)	30	9	(1.1%)
LV Load	(18.2%)	148	135	(16.6%)
Crete Load	(0.0%)	0	0	(0.0%)
Pumping	(0.0%)	0	0	(0.0%)
Exports			337	(41.4%)
Sys.Losses	(0.0%)	0	0	(0.0%)
D/R Load	(0.0%)	0	0	(0.0%)

