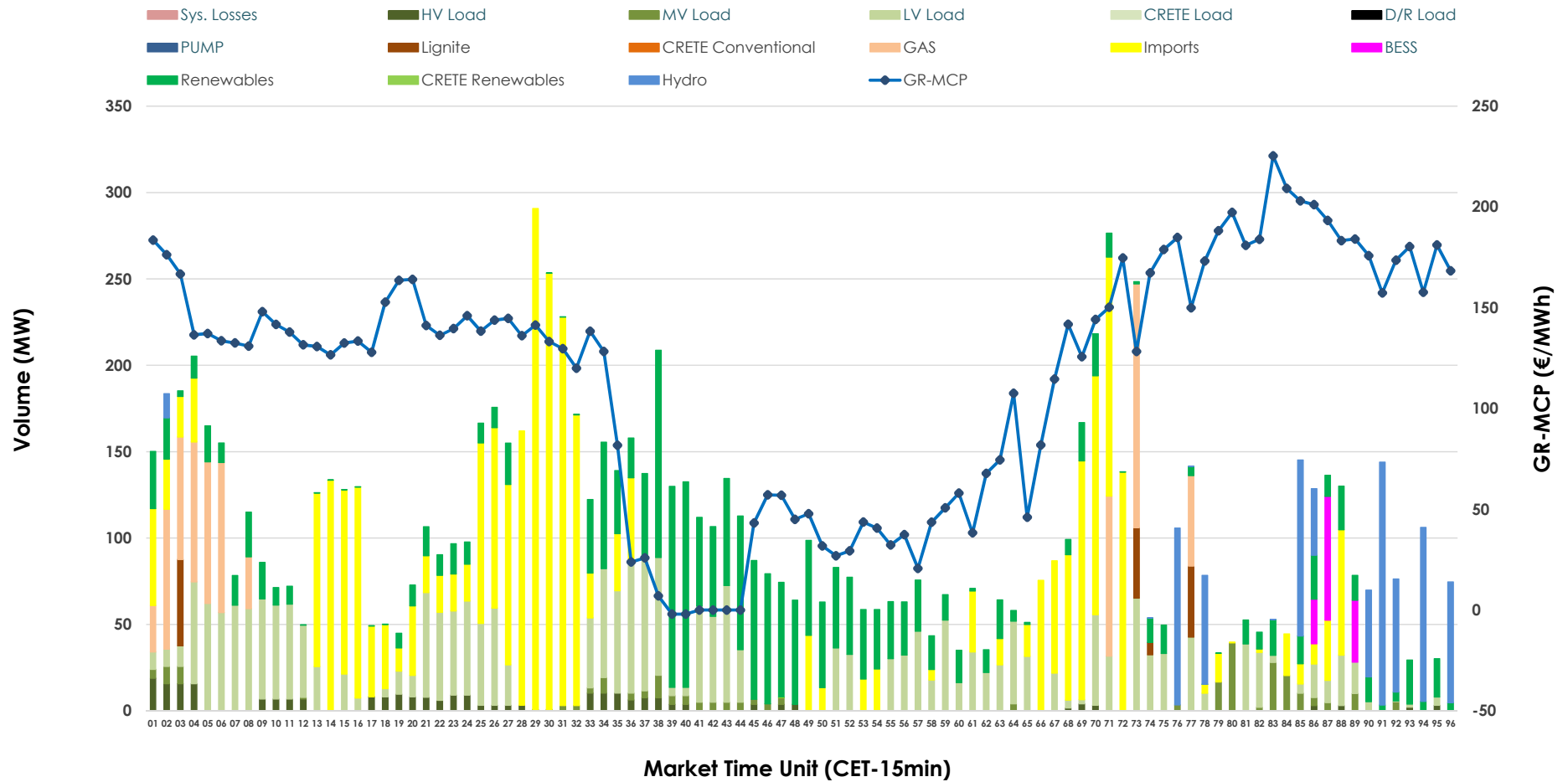


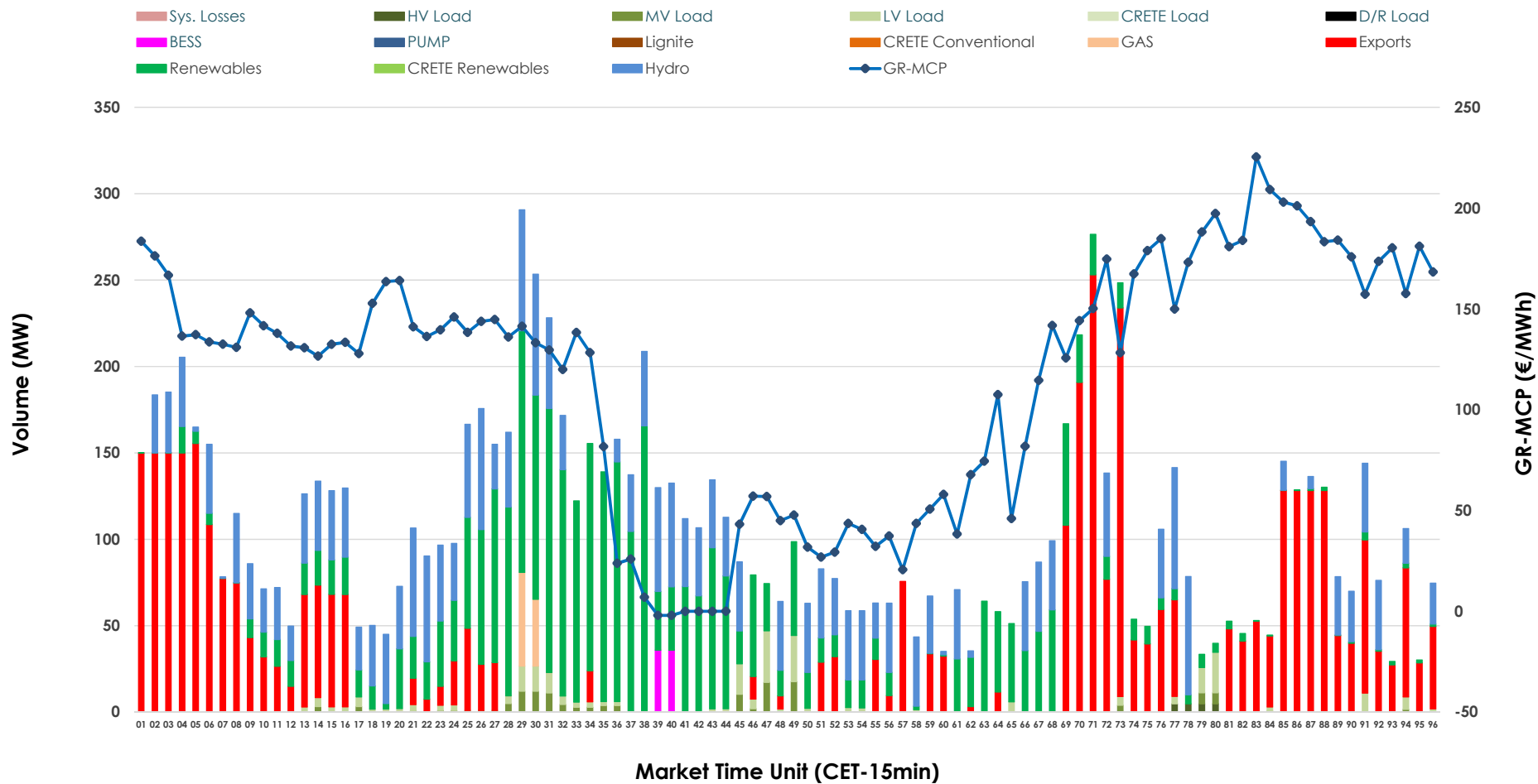


IDA '2' Market Outlook

09.06.2026 IDA '2' Market - Sell



09.06.2026 IDA '2' Market - Buy



GR Bidding Zone Weekly Figures

Delivery Day	03.06	04.06	05.06	06.06	07.06	08.06	09.06
	👇 -10%	👆 2%	👆 26%	👇 -28%	👇 -29%	👆 74%	👆 18%
Avg.MCP (€/MWh)	86.72	88.19	111.27	80.15	56.96	99.05	116.65
Max.MCP (€/MWh)	155.00	210.77	181.27	152.78	148.74	189.62	225.37
Min.MCP (€/MWh)	-10.47	0.00	30.63	-10.82	-21.61	-1.00	-2.01
	👇 -49%	👆 13%	👇 -9%	👆 74%	👇 -33%	👇 -2%	👆 50%
Tot.Vol(GWh)	2.94	3.33	3.03	5.28	3.53	3.47	5.21

Trades by Order Type

Delivery Day		03.06	04.06	05.06	06.06	07.06	08.06	09.06	
Ord Price Type		Sell & Buy Trades in (GWh) per Price Type							(%)
PPT	(S)	0.000	0.000	0.000	0.000	0.000	0.000	0.000	0.00%
HBD	(S)	1.455	0.958	0.948	1.595	0.633	1.594	1.737	66.67%
BLK	(S)	0.000	0.000	0.000	0.000	0.000	0.000	0.000	0.00%
CPL	(S)	0.016	0.707	0.570	1.045	1.130	0.141	0.868	33.33%
PPT	(B)	0.000	0.000	0.000	0.000	0.000	0.000	0.000	0.00%
HBD	(B)	1.302	1.332	1.114	2.207	1.399	1.169	1.610	61.78%
BLK	(B)	0.000	0.000	0.000	0.000	0.000	0.000	0.000	0.00%
CPL	(B)	0.170	0.333	0.404	0.434	0.364	0.566	0.996	38.22%
		Sell & Buy Orders Traded per Price Type							(%)
PPT	(S)	0	0	0	0	0	0	0	0.00%
HBD	(S)	226	210	232	393	223	305	333	100.00%
BLK	(S)	0	0	0	0	0	0	0	0.00%
PPT	(B)	0	0	0	0	0	0	0	0.00%
HBD	(B)	418	380	483	655	539	448	428	100.00%
BLK	(B)	0	0	0	0	0	0	0	0.00%

- MCP** Market Clearing Price (€/MWh)
- PPT** Priority Price-Taking
- HBD** Hybrid
- BLK** Block
- CPL** Market Coupling Flow

Trade's Volume Mix

	Sell - MWh	Buy - MWh	
Lignite (1.3%)	35	0	(0.0%)
Crete Conv. (0.0%)	0	0	(0.0%)
Gas (7.1%)	186	23	(0.9%)
Hydro (7.2%)	187	645	(24.7%)
Imports (33.3%)	868		
RES (21.2%)	552	818	(31.4%)
Crete RES (0.0%)	0	0	(0.0%)
BESS (1.3%)	33	18	(0.7%)
HV Load (2.5%)	66	5	(0.2%)
MV Load (2.4%)	64	34	(1.3%)
LV Load (23.6%)	615	67	(2.6%)
Crete Load (0.0%)	0	0	(0.0%)
Pumping (0.0%)	0	0	(0.0%)
Exports		996	(38.2%)
Sys.Losses (0.0%)	0	0	(0.0%)
D/R Load (0.0%)	0	0	(0.0%)

