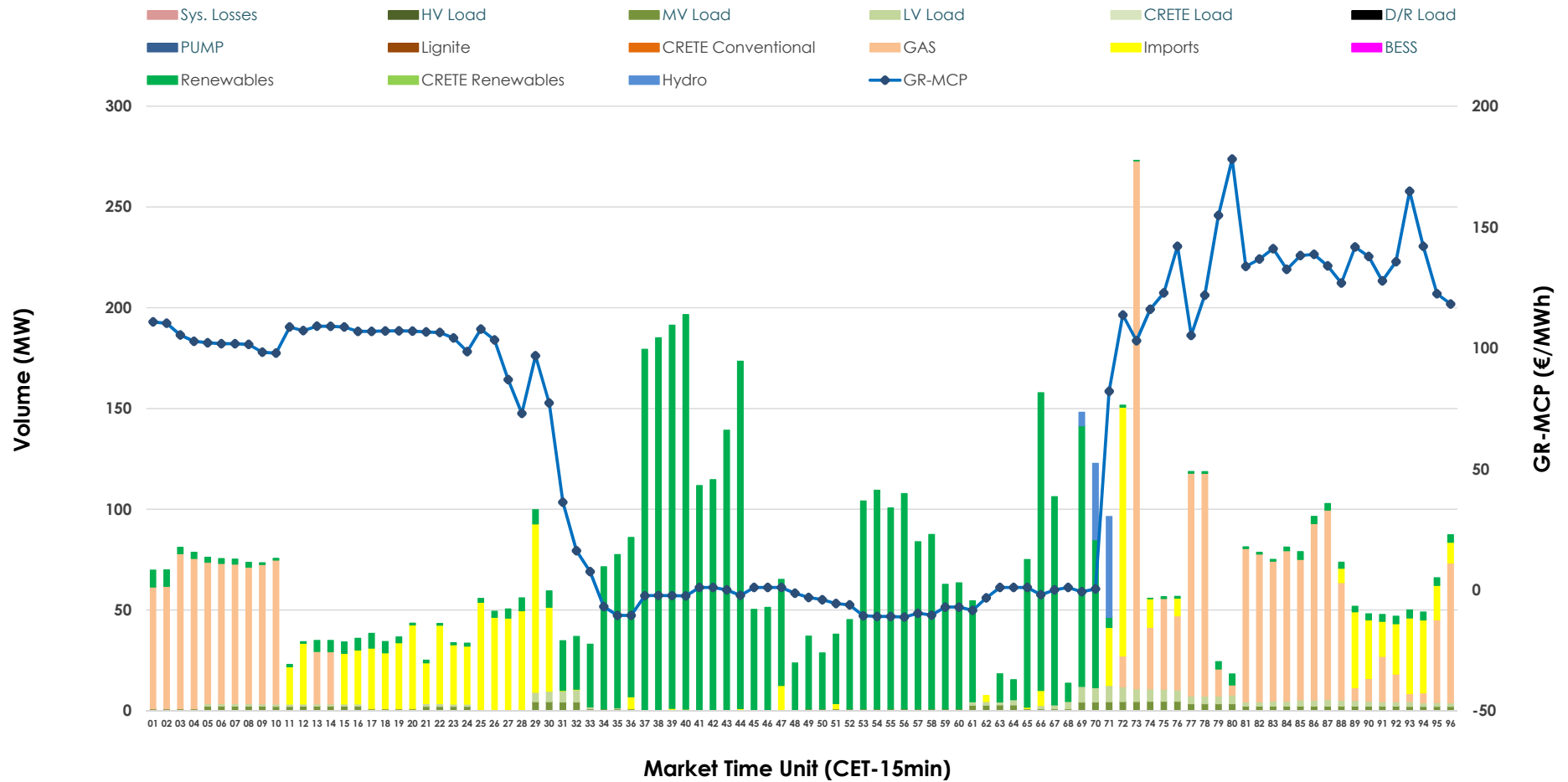


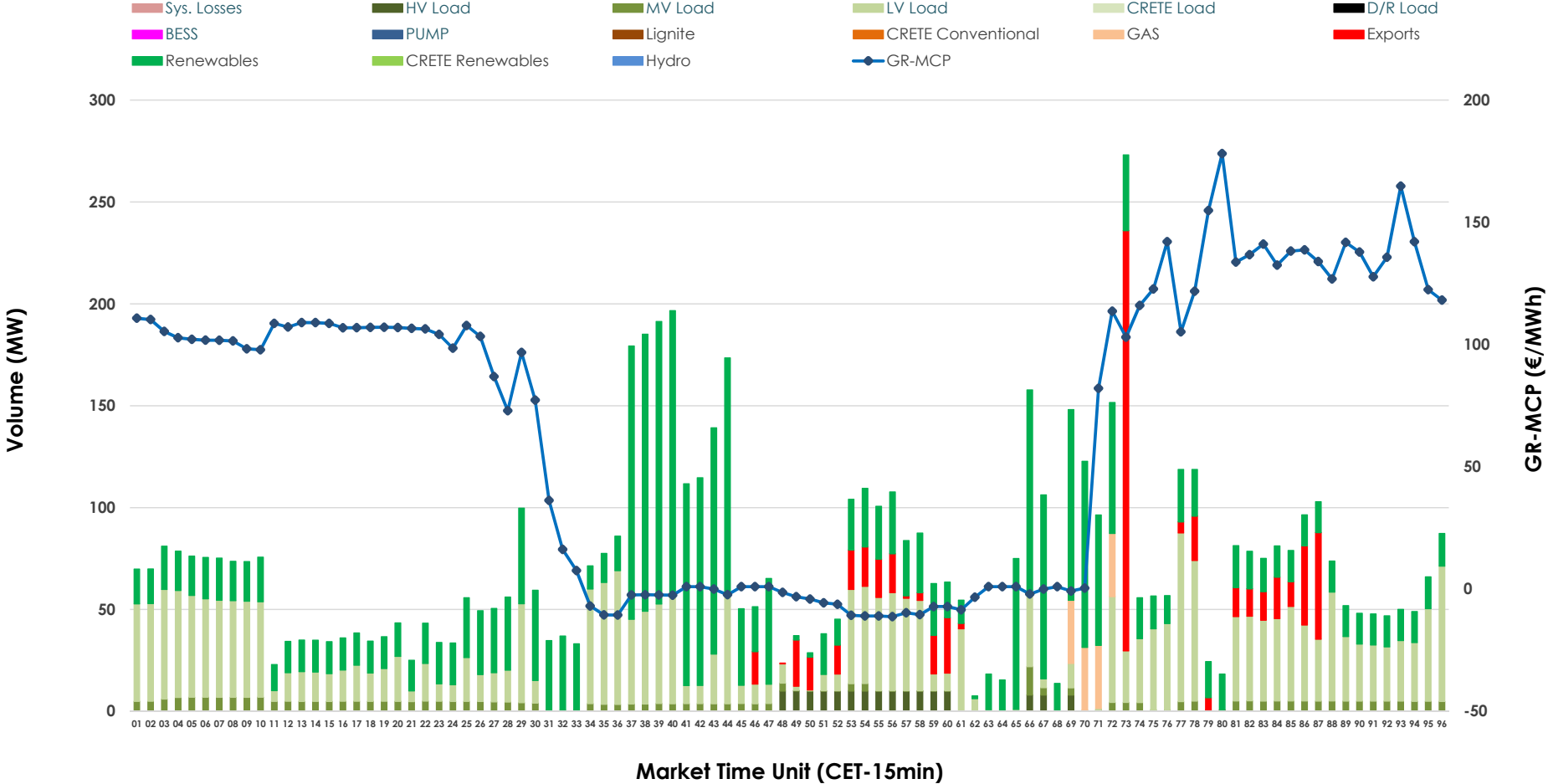


# IDA '1' Market Outlook

03.05.2026 IDA '1' Market - Sell



### 03.05.2026 IDA '1' Market - Buy



### GR Bidding Zone Weekly Figures

Delivery Day	27.04	28.04	29.04	30.04	01.05	02.05	03.05
	↑ 63%	↓ -5%	↔ 32%	↓ -14%	↓ -37%	↔ 9%	↔ 16%
<b>Avg.MCP (€/MWh)</b>	77.34	73.58	97.14	83.69	52.40	57.37	66.66
<b>Max.MCP (€/MWh)</b>	218.32	191.45	231.24	223.93	114.42	173.60	178.11
<b>Min.MCP (€/MWh)</b>	-12.00	-25.96	-5.00	-12.88	-19.99	-16.90	-11.25
	↔ 11%	↓ -16%	↓ -4%	↑ 35%	↔ 27%	↓ -49%	↑ 61%
<b>Tot.Vol(GWh)</b>	3.08	2.60	2.48	3.36	4.28	2.20	3.55

### Trades by Order Type

Delivery Day		27.04	28.04	29.04	30.04	01.05	02.05	03.05	
Ord Price Type		Sell & Buy Trades in (GWh) per Price Type							(%)
<b>PPT</b>	(S)	0.000	0.000	0.000	0.000	0.000	0.000	0.000	0.00%
<b>HBD</b>	(S)	1.230	1.114	1.061	1.345	0.790	0.925	1.500	84.50%
<b>BLK</b>	(S)	0.000	0.000	0.000	0.000	0.000	0.000	0.000	0.00%
<b>CPL</b>	(S)	0.309	0.185	0.181	0.334	1.351	0.176	0.275	15.50%
<b>PPT</b>	(B)	0.000	0.000	0.000	0.000	0.000	0.000	0.000	0.00%
<b>HBD</b>	(B)	1.192	0.953	1.112	1.102	2.090	1.016	1.624	91.48%
<b>BLK</b>	(B)	0.000	0.000	0.000	0.000	0.000	0.000	0.000	0.00%
<b>CPL</b>	(B)	0.347	0.346	0.130	0.577	0.051	0.084	0.151	8.52%
		Sell & Buy Orders Traded per Price Type							(%)
<b>PPT</b>	(S)	0	0	0	0	0	0	0	0.00%
<b>HBD</b>	(S)	117	383	305	258	385	389	340	100.00%
<b>BLK</b>	(S)	0	0	0	0	0	0	0	0.00%
<b>PPT</b>	(B)	0	0	0	0	0	0	0	0.00%
<b>HBD</b>	(B)	576	651	630	759	691	1017	793	100.00%
<b>BLK</b>	(B)	0	0	0	0	0	0	0	0.00%

- MCP** Market Clearing Price (€/MWh)
- PPT** Priority Price-Taking
- HBD** Hybrid
- BLK** Block
- CPL** Market Coupling Flow

### Trade's Volume Mix

	Sell - MWh	Buy - MWh	
<b>Lignite</b> (0.0%)	0	0	(0.0%)
<b>Crete Conv.</b> (0.0%)	0	0	(0.0%)
<b>Gas</b> (30.3%)	537	31	(1.7%)
<b>Hydro</b> (1.3%)	24	0	(0.0%)
<b>Imports</b> (15.5%)	275		
<b>RES</b> (48.0%)	853	796	(44.8%)
<b>Crete RES</b> (0.0%)	0	0	(0.0%)
<b>BESS</b> (0.0%)	0	0	(0.0%)
<b>HV Load</b> (0.0%)	0	39	(2.2%)
<b>MV Load</b> (2.5%)	45	89	(5.0%)
<b>LV Load</b> (2.3%)	42	670	(37.7%)
<b>Crete Load</b> (0.0%)	0	0	(0.0%)
<b>Pumping</b> (0.0%)	0	0	(0.0%)
<b>Exports</b>		151	(8.5%)
<b>Sys.Losses</b> (0.0%)	0	0	(0.0%)
<b>D/R Load</b> (0.0%)	0	0	(0.0%)

