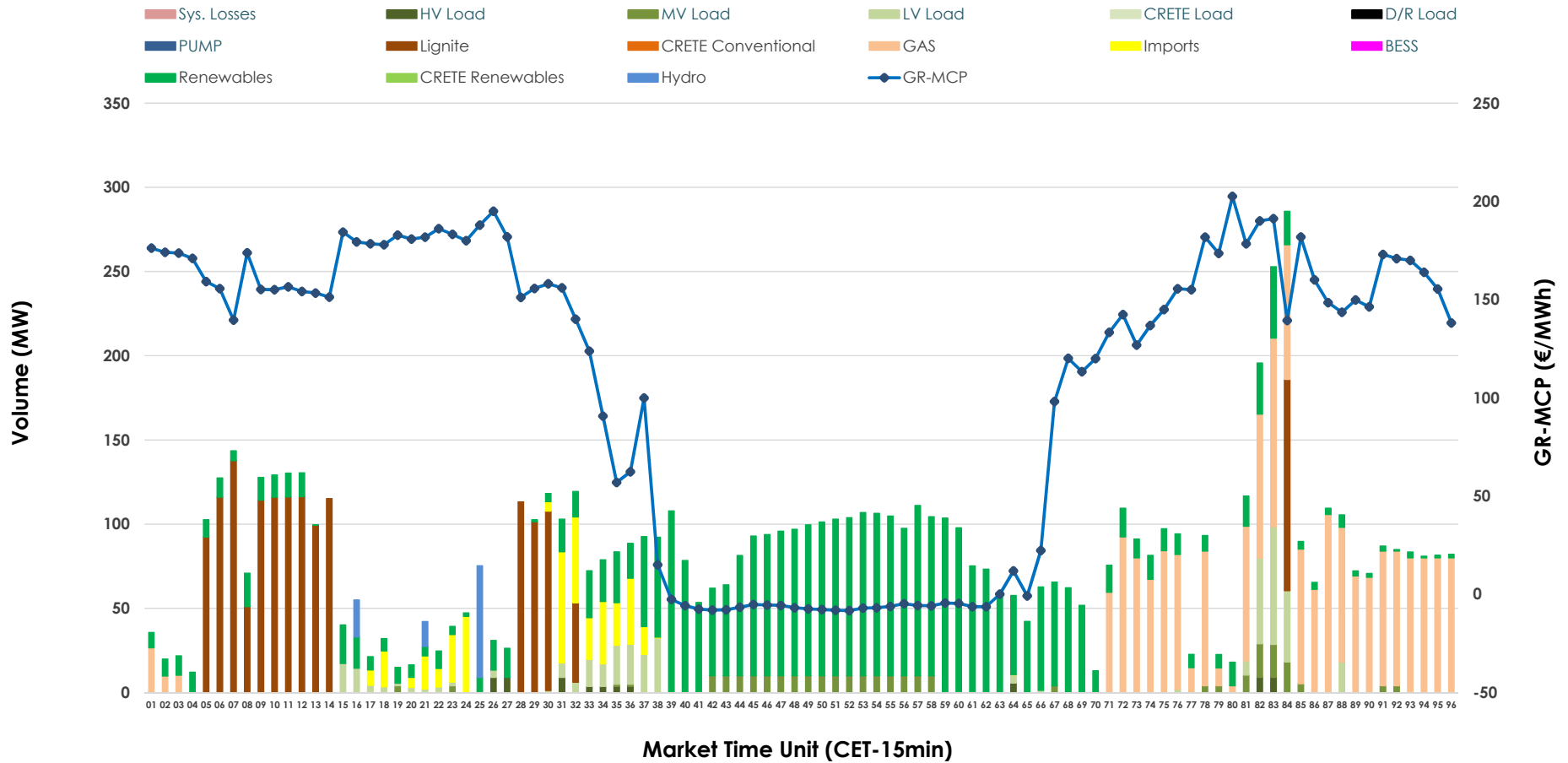


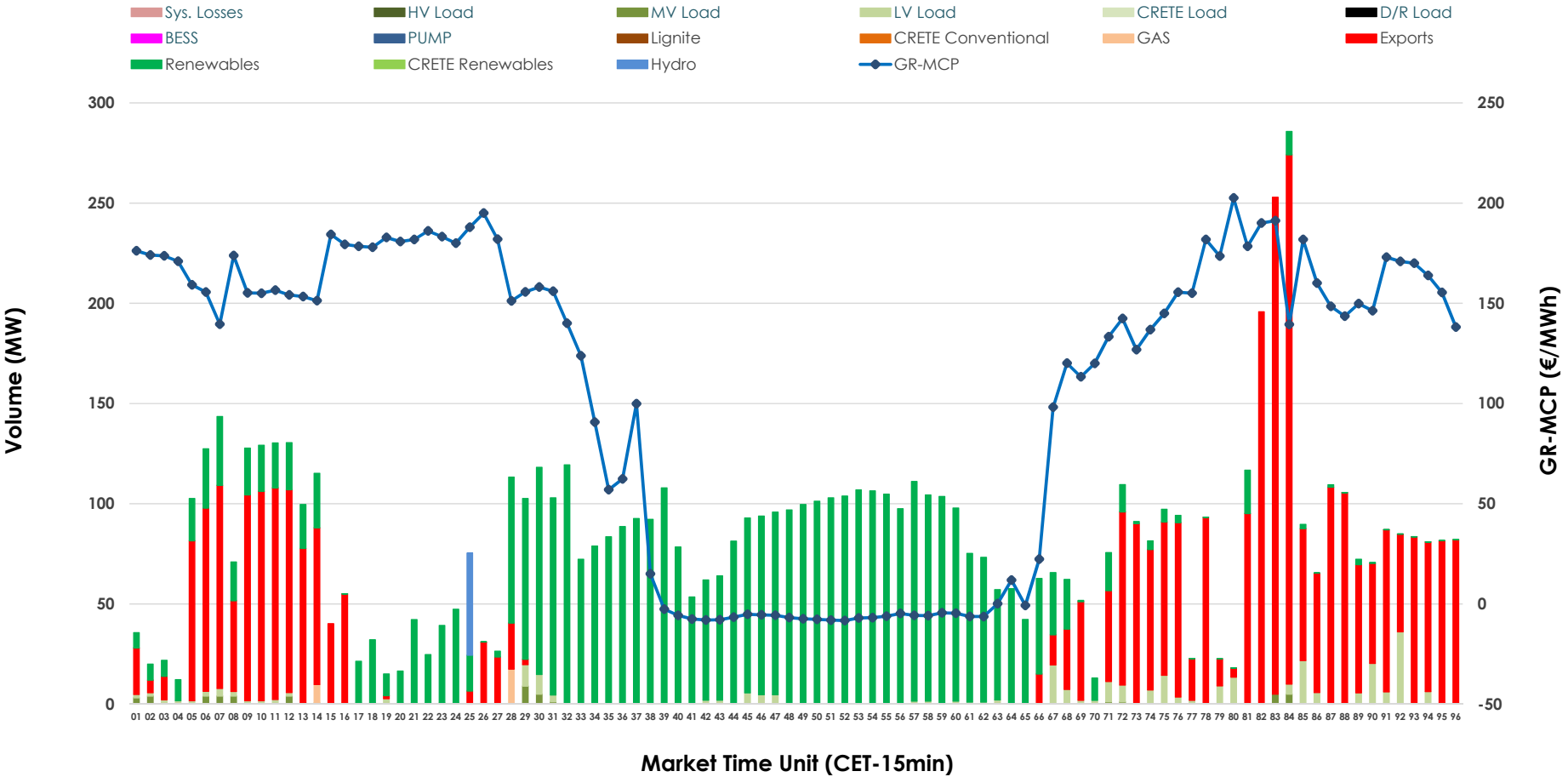


IDA '2' Market Outlook

06.05.2026 IDA '2' Market - Sell



06.05.2026 IDA '2' Market - Buy



GR Bidding Zone Weekly Figures

Delivery Day	30.04	01.05	02.05	03.05	04.05	05.05	06.05
	👇 -14%	👇 -32%	👈 13%	👈 8%	👈 47%	👈 2%	👈 0%
Avg.MCP (€/MWh)	86.96	58.74	66.43	71.66	105.41	107.48	107.56
Max.MCP (€/MWh)	209.77	118.93	168.12	187.97	304.04	277.05	202.53
Min.MCP (€/MWh)	-5.23	-12.00	-20.00	-20.00	-15.01	-11.79	-8.32
	👈 29%	👇 -18%	👈 46%	👇 -25%	👈 8%	👈 60%	👇 -51%
Tot.Vol(GWh)	5.18	4.27	6.22	4.66	5.04	8.08	4.00

Trades by Order Type

Delivery Day		30.04	01.05	02.05	03.05	04.05	05.05	06.05	
Ord Price Type		Sell & Buy Trades in (GWh) per Price Type							(%)
PPT	(S)	0.000	0.000	0.000	0.000	0.000	0.000	0.000	0.00%
HBD	(S)	2.016	1.781	2.831	1.733	1.725	1.827	1.897	94.91%
BLK	(S)	0.000	0.000	0.000	0.000	0.000	0.000	0.000	0.00%
CPL	(S)	0.572	0.352	0.277	0.599	0.793	2.212	0.102	5.09%
PPT	(B)	0.000	0.000	0.000	0.000	0.000	0.000	0.000	0.00%
HBD	(B)	2.052	1.235	1.727	2.200	2.371	4.034	1.120	56.06%
BLK	(B)	0.000	0.000	0.000	0.000	0.000	0.000	0.000	0.00%
CPL	(B)	0.536	0.898	1.381	0.132	0.147	0.005	0.878	43.94%
		Sell & Buy Orders Traded per Price Type							(%)
PPT	(S)	0	0	0	0	0	0	0	0.00%
HBD	(S)	428	525	429	305	322	409	223	100.00%
BLK	(S)	0	0	0	0	0	0	0	0.00%
PPT	(B)	0	0	0	0	0	0	0	0.00%
HBD	(B)	448	344	395	466	562	374	345	100.00%
BLK	(B)	0	0	0	0	0	0	0	0.00%

- MCP** Market Clearing Price (€/MWh)
- PPT** Priority Price-Taking
- HBD** Hybrid
- BLK** Block
- CPL** Market Coupling Flow

Trade's Volume Mix

	Sell - MWh	Buy - MWh	
Lignite (19.6%)	392	0	(0.0%)
Crete Conv. (0.0%)	0	0	(0.0%)
Gas (24.0%)	480	7	(0.3%)
Hydro (1.3%)	26	13	(0.6%)
Imports (5.1%)	102		
RES (40.7%)	813	1,015	(50.8%)
Crete RES (0.0%)	0	0	(0.0%)
BESS (0.0%)	0	0	(0.0%)
HV Load (0.8%)	16	0	(0.0%)
MV Load (3.4%)	68	13	(0.6%)
LV Load (5.1%)	101	73	(3.7%)
Crete Load (0.0%)	0	0	(0.0%)
Pumping (0.0%)	0	0	(0.0%)
Exports		878	(43.9%)
Sys.Losses (0.0%)	0	0	(0.0%)
D/R Load (0.0%)	0	0	(0.0%)

