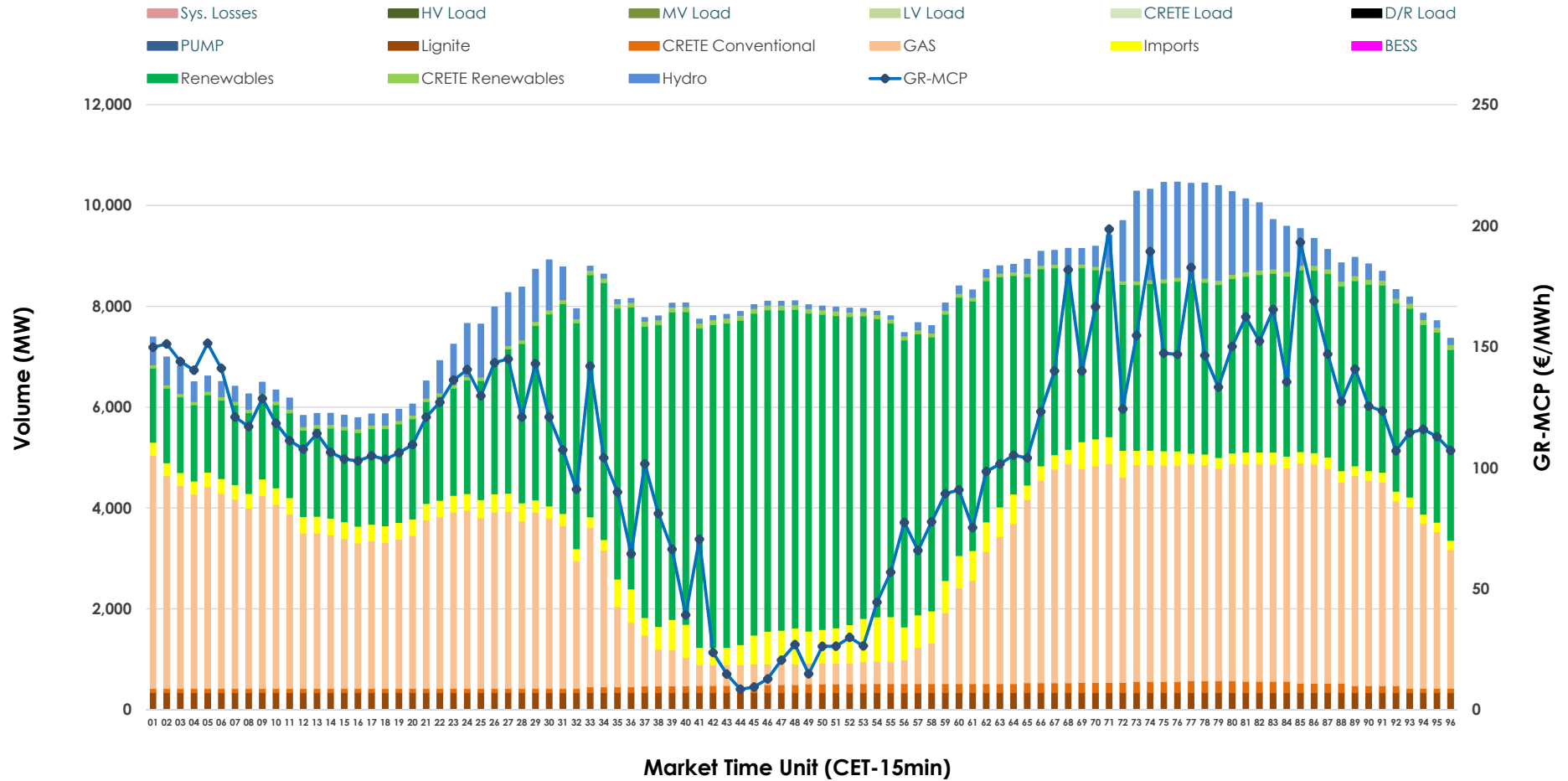


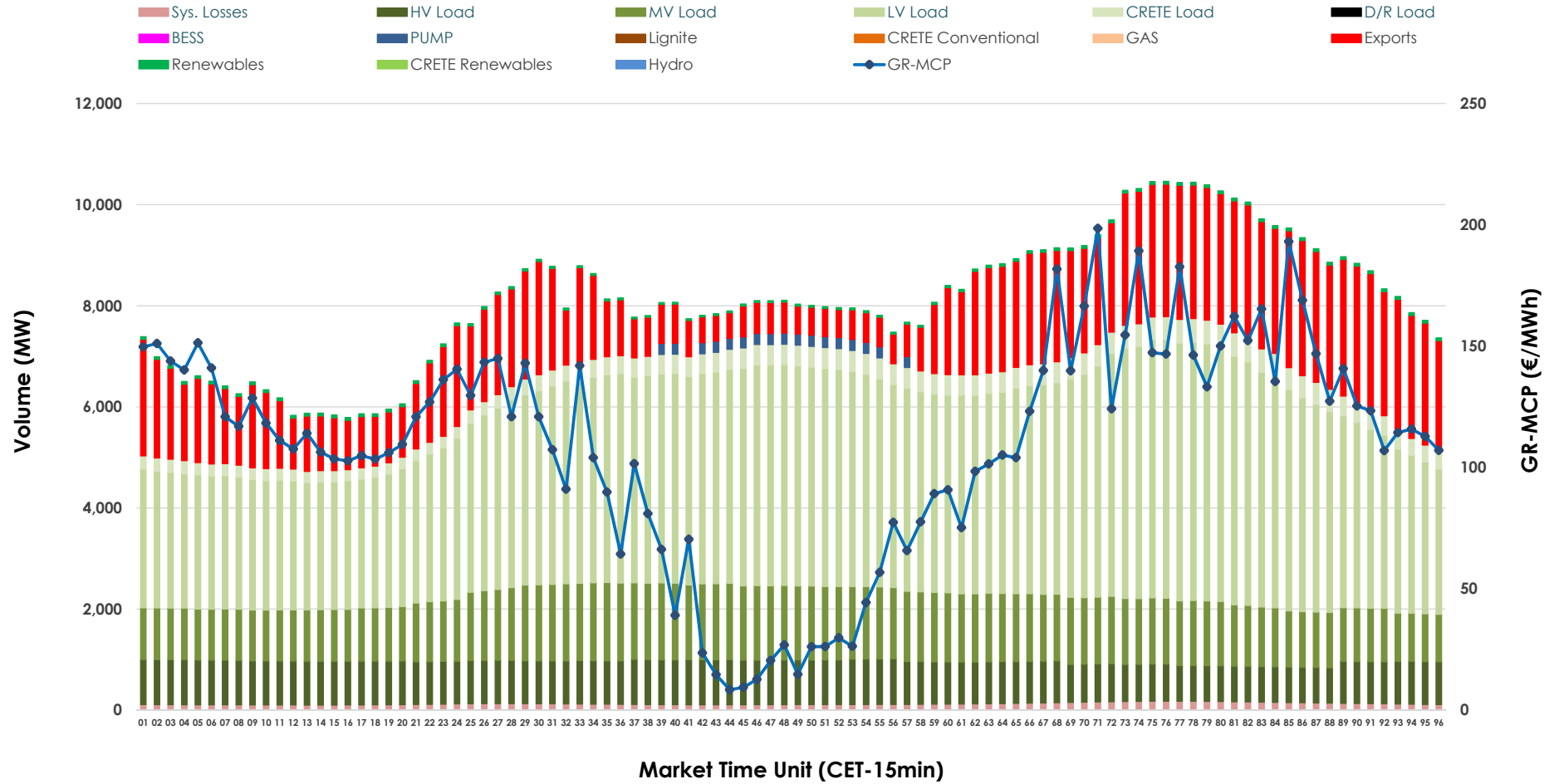


# Day-Ahead Market Outlook

24.03.2026 Day-Ahead Market - Sell



## 24.03.2026 Day-Ahead Market - Buy



### GR Bidding Zone Weekly Figures

Delivery Day	18.03	19.03	20.03	21.03	22.03	23.03	24.03
	👇 -22%	👆 11%	👆 11%	👇 -14%	👇 -12%	👆 74%	👇 -26%
<b>Avg.MCP (€/MWh)</b>	90.85	101.23	112.04	96.67	84.78	147.74	109.02
<b>Max.MCP (€/MWh)</b>	167.11	219.70	250.73	176.61	192.93	281.69	198.53
<b>Min.MCP (€/MWh)</b>	3.88	3.34	13.00	0.00	0.00	63.72	8.47
	➡ 0%	👇 -2%	👆 5%	👇 -2%	👇 -9%	👆 9%	👇 -1%
<b>Tot.Vol(GWh)</b>	395.77	386.01	405.85	396.49	362.14	394.91	389.09

### Trades by Order Type

Delivery Day		18.03	19.03	20.03	21.03	22.03	23.03	24.03	
<b>Ord Price Type</b>		<b>Sell &amp; Buy Trades in (GWh) per Price Type</b>							<b>(%)</b>
<b>PPT</b>	(S)	94.196	93.438	96.577	90.130	82.949	77.542	83.245	42.79%
<b>HBD</b>	(S)	69.505	74.421	78.081	79.261	67.215	71.298	76.867	39.51%
<b>BLK</b>	(S)	28.203	20.366	28.178	28.856	30.904	46.688	30.410	15.63%
<b>CPL</b>	(S)	5.982	4.778	0.092	0.000	0.000	1.928	4.021	2.07%
<b>PPT</b>	(B)	13.302	13.670	13.501	14.027	13.092	14.391	14.986	7.70%
<b>HBD</b>	(B)	150.765	153.841	153.779	145.947	132.444	147.269	153.909	79.11%
<b>BLK</b>	(B)	0.000	0.000	0.000	0.000	0.000	0.000	0.000	0.00%
<b>CPL</b>	(B)	33.819	25.492	35.647	38.273	35.532	35.796	25.648	13.18%
		<b>Sell &amp; Buy Orders Traded per Price Type</b>							<b>(%)</b>
<b>PPT</b>	(S)	1927	2001	2050	1902	1902	1886	1849	37.26%
<b>HBD</b>	(S)	2970	3003	3049	2881	2817	3216	3103	62.54%
<b>BLK</b>	(S)	12	8	13	16	18	25	10	0.20%
<b>PPT</b>	(B)	2251	2246	2233	2232	2217	2231	2234	35.01%
<b>HBD</b>	(B)	4238	4109	4064	4095	4167	4048	4147	64.99%
<b>BLK</b>	(B)	0	0	0	0	0	0	0	0.00%

**MCP** Market Clearing Price (€/MWh)  
**PPT** Priority Price-Taking  
**HBD** Hybrid  
**BLK** Block  
**CPL** Market Coupling Flow

### Trade's Volume Mix

		Sell - MWh	Buy - MWh	
<b>Lignite</b>	(4.2%)	8,160	0	(0.0%)
<b>Crete Conv.</b>	(1.8%)	3,416	0	(0.0%)
<b>Gas</b>	(35.2%)	68,560	0	(0.0%)
<b>Hydro</b>	(5.8%)	11,235	0	(0.0%)
<b>Imports</b>	(4.8%)	9,310		
<b>RES</b>	(47.2%)	91,864	1,157	(0.6%)
<b>Crete RES</b>	(1.0%)	1,997	0	(0.0%)
<b>BESS</b>	(0.0%)	0	0	(0.0%)
<b>HV Load</b>	(0.0%)	0	20,021	(10.3%)
<b>MV Load</b>	(0.0%)	0	30,380	(15.6%)
<b>LV Load</b>	(0.0%)	0	90,853	(46.7%)
<b>Crete Load</b>	(0.0%)	0	8,554	(4.4%)
<b>Pumping</b>	(0.0%)	0	935	(0.5%)
<b>Exports</b>			39,597	(20.4%)
<b>Sys.Losses</b>	(0.0%)	0	3,045	(1.6%)
<b>D/R Load</b>	(0.0%)	0	0	(0.0%)

