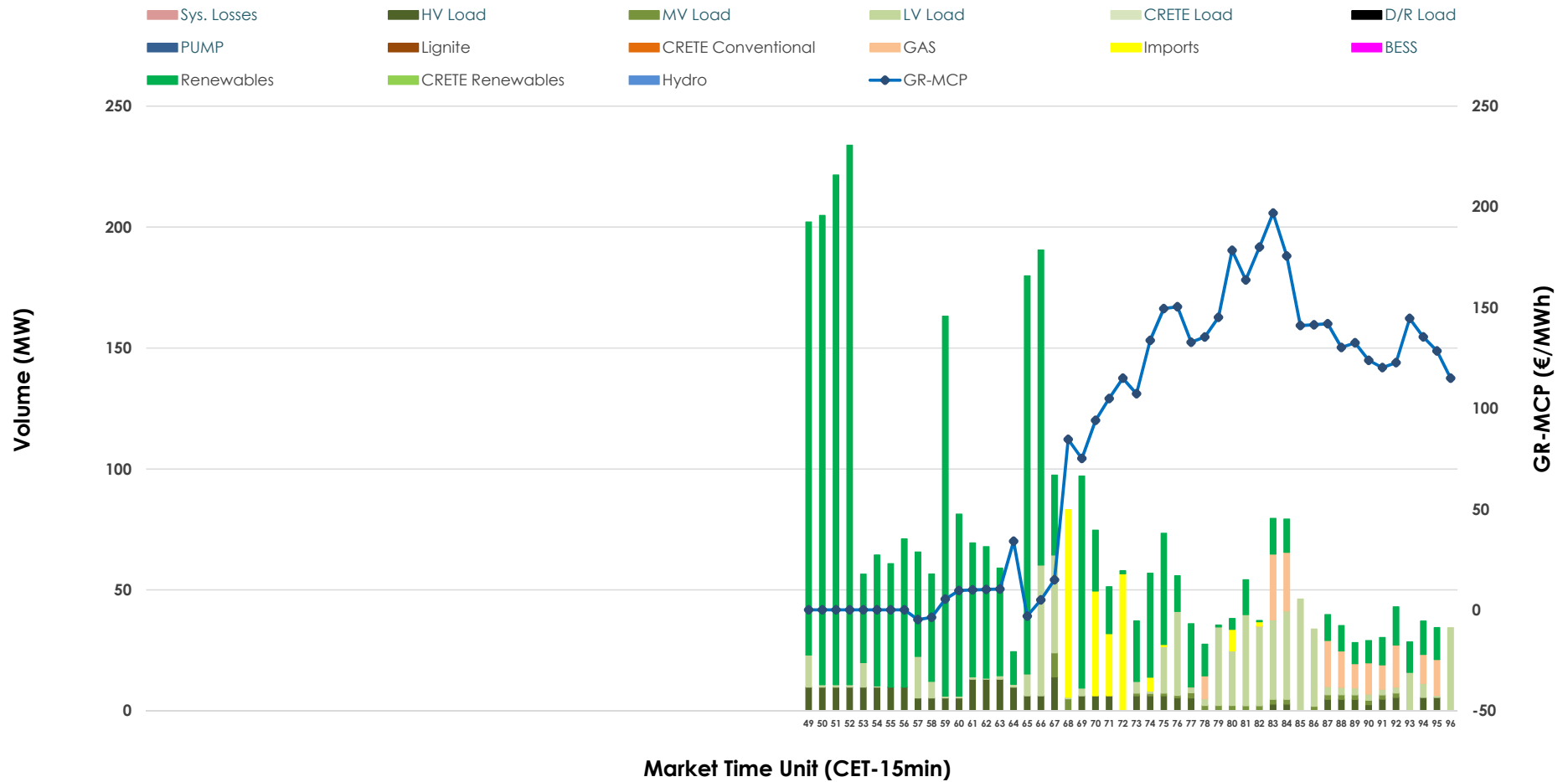


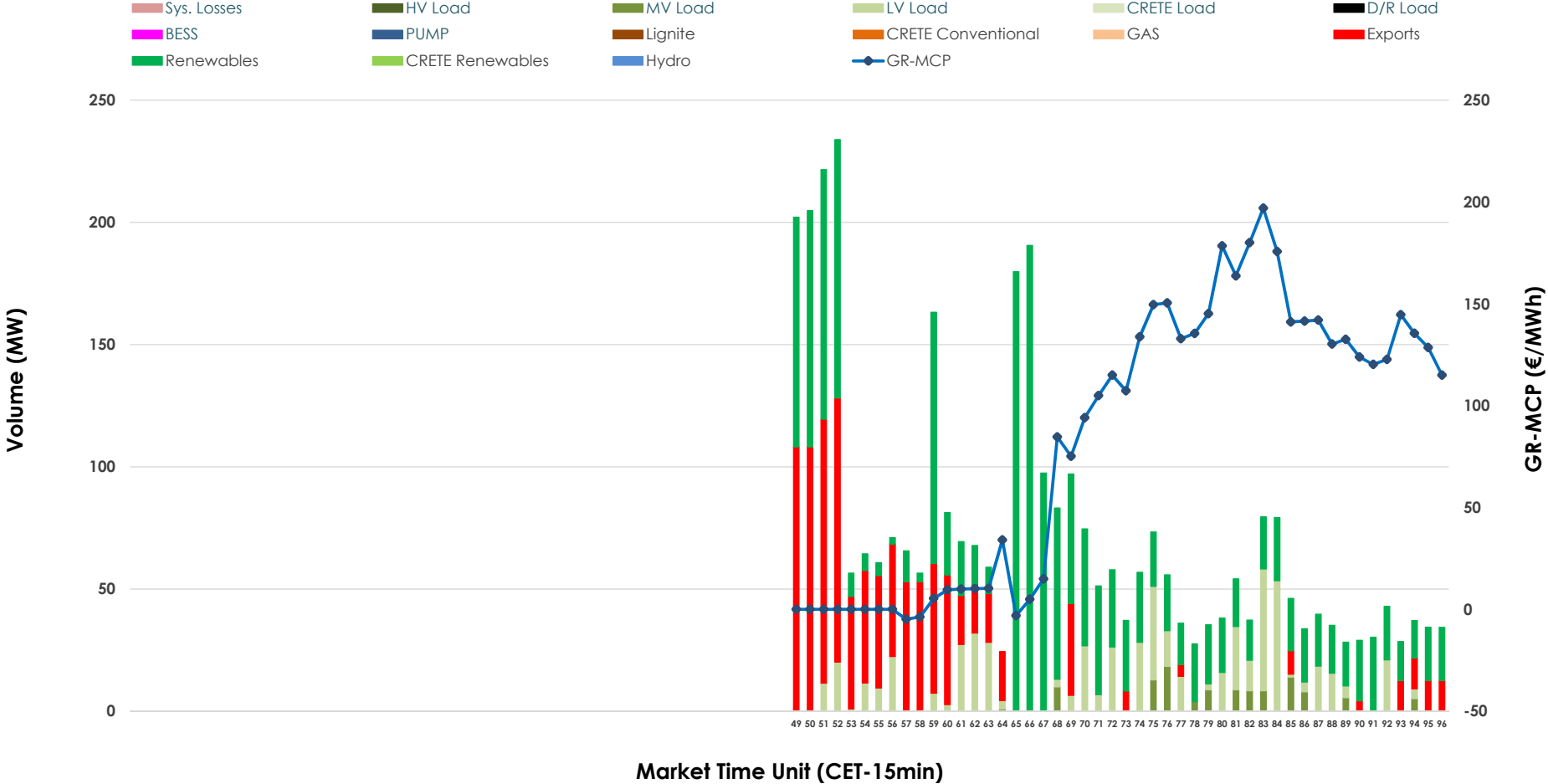


IDA '3' Market Outlook

20.05.2026 IDA '3' Market - Sell



20.05.2026 IDA '3' Market - Buy



GR Bidding Zone Weekly Figures

Delivery Day	14.05	15.05	16.05	17.05	18.05	19.05	20.05
	👇 -8%	👇 -8%	👇 -18%	👆 3%	👆 63%	👆 12%	👇 -36%
Avg.MCP (€/MWh)	91.74	84.49	69.38	71.12	115.83	129.53	83.15
Max.MCP (€/MWh)	241.73	153.65	132.56	146.50	272.82	216.80	196.97
Min.MCP (€/MWh)	-10.36	0.01	1.52	-15.83	-5.23	63.92	-4.78
	👇 -21%	👆 49%	👇 -7%	👇 -48%	👆 96%	👆 26%	👇 -37%
Tot.Vol(GWh)	1.57	2.34	2.18	1.14	2.23	2.81	1.78

Trades by Order Type

Delivery Day		14.05	15.05	16.05	17.05	18.05	19.05	20.05	
Ord Price Type		Sell & Buy Trades in (GWh) per Price Type							(%)
PPT	(S)	0.000	0.000	0.000	0.000	0.000	0.000	0.000	0.00%
HBD	(S)	0.623	0.806	1.089	0.304	0.670	0.893	0.836	93.82%
BLK	(S)	0.000	0.000	0.000	0.000	0.000	0.000	0.000	0.00%
CPL	(S)	0.163	0.364	0.000	0.266	0.446	0.511	0.055	6.18%
PPT	(B)	0.000	0.000	0.000	0.000	0.000	0.000	0.000	0.00%
HBD	(B)	0.771	1.144	0.603	0.446	1.071	1.185	0.635	71.32%
BLK	(B)	0.000	0.000	0.000	0.000	0.000	0.000	0.000	0.00%
CPL	(B)	0.015	0.025	0.486	0.124	0.046	0.219	0.256	28.68%
		Sell & Buy Orders Traded per Price Type							(%)
PPT	(S)	0	0	0	0	0	0	0	0.00%
HBD	(S)	164	112	220	81	183	126	233	100.00%
BLK	(S)	0	0	0	0	0	0	0	0.00%
PPT	(B)	0	0	0	0	0	0	0	0.00%
HBD	(B)	112	246	129	163	307	388	163	100.00%
BLK	(B)	0	0	0	0	0	0	0	0.00%

- MCP** Market Clearing Price (€/MWh)
- PPT** Priority Price-Taking
- HBD** Hybrid
- BLK** Block
- CPL** Market Coupling Flow

Trade's Volume Mix

	Sell - MWh	Buy - MWh	
Lignite (0.0%)	0	0	(0.0%)
Crete Conv. (0.0%)	0	0	(0.0%)
Gas (4.8%)	43	0	(0.0%)
Hydro (0.0%)	0	0	(0.0%)
Imports (6.2%)	55		
RES (64.0%)	570	464	(52.1%)
Crete RES (0.0%)	0	0	(0.0%)
BESS (0.0%)	0	0	(0.0%)
HV Load (7.5%)	67	0	(0.0%)
MV Load (1.4%)	12	28	(3.2%)
LV Load (16.1%)	144	143	(16.1%)
Crete Load (0.0%)	0	0	(0.0%)
Pumping (0.0%)	0	0	(0.0%)
Exports		256	(28.7%)
Sys.Losses (0.0%)	0	0	(0.0%)
D/R Load (0.0%)	0	0	(0.0%)

