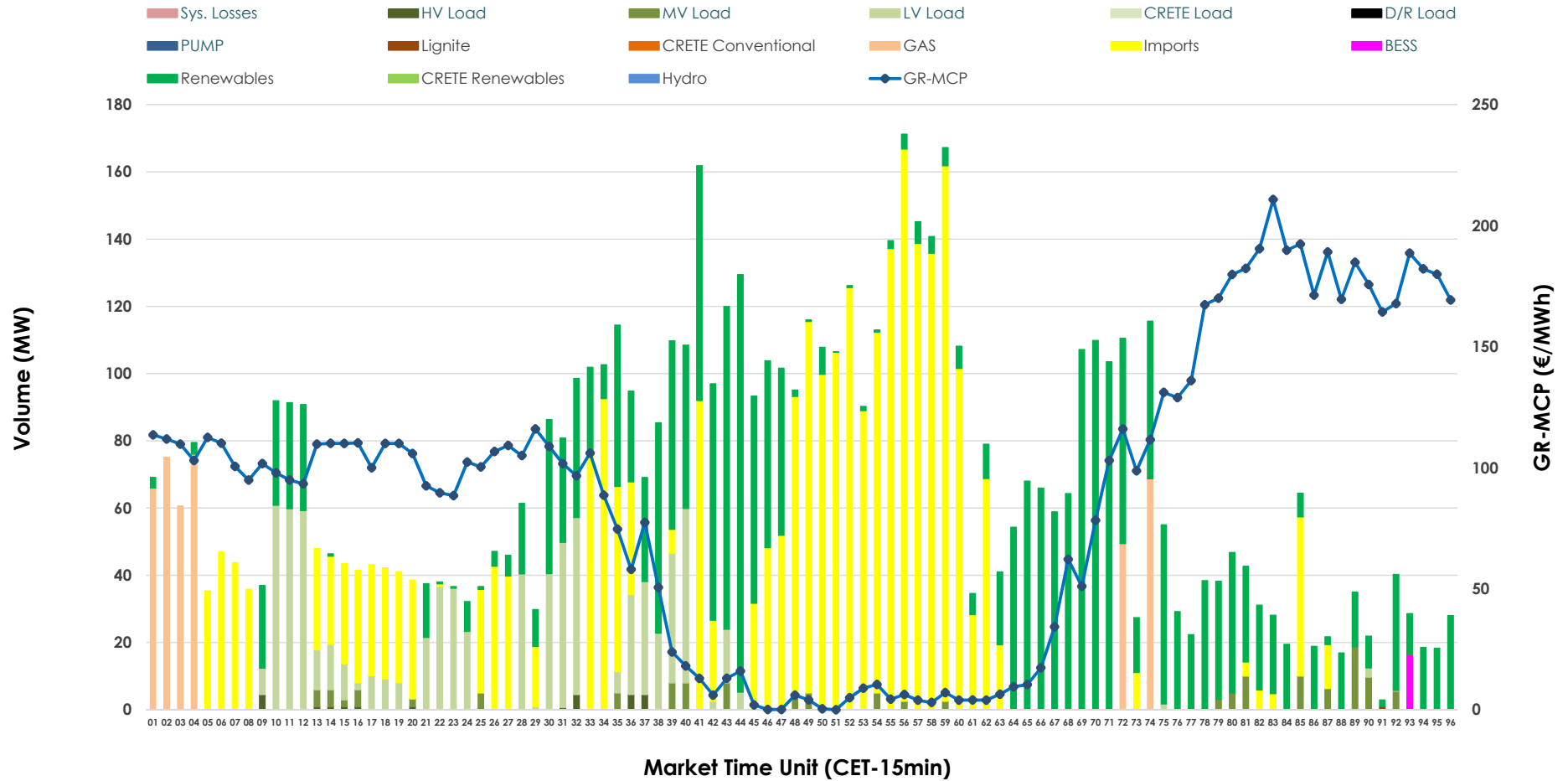


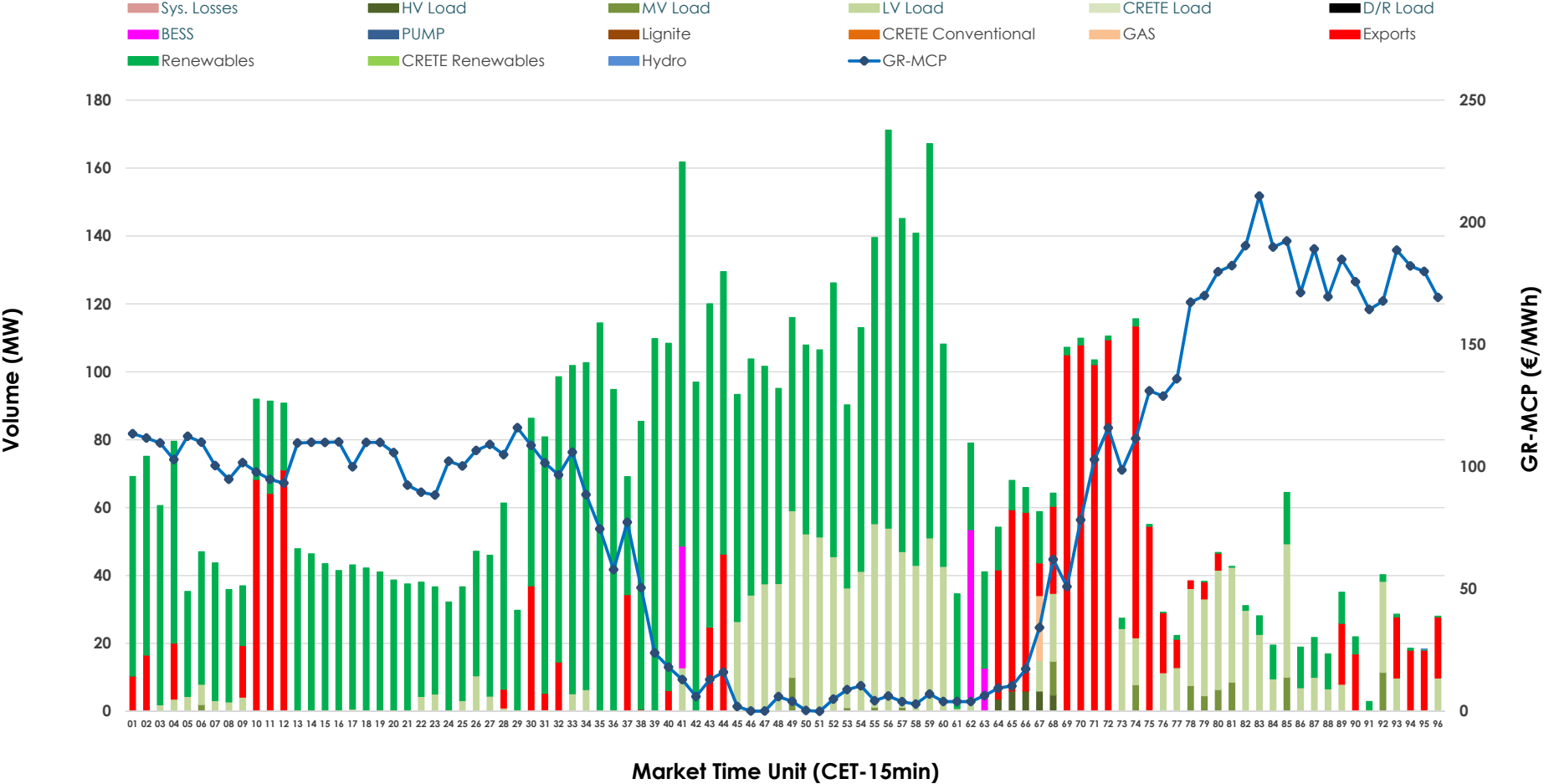


IDA '2' Market Outlook

04.06.2026 IDA '2' Market - Sell



04.06.2026 IDA '2' Market - Buy



GR Bidding Zone Weekly Figures

Delivery Day	29.05	30.05	31.05	01.06	02.06	03.06	04.06
	👇 -13%	👆 13%	👇 -5%	👆 20%	👇 -7%	👇 -10%	👆 2%
Avg.MCP (€/MWh)	80.51	90.81	86.46	103.88	96.79	86.72	88.19
Max.MCP (€/MWh)	160.91	201.29	159.14	212.74	173.58	155.00	210.77
Min.MCP (€/MWh)	-14.99	-4.54	-0.07	-6.67	0.75	-10.47	0.00
	👇 -8%	👇 -30%	👇 -11%	👆 35%	👆 37%	👇 -49%	👆 13%
Tot.Vol(GWh)	5.03	3.54	3.14	4.24	5.80	2.94	3.33

Trades by Order Type

Delivery Day		29.05	30.05	31.05	01.06	02.06	03.06	04.06	
Ord Price Type		Sell & Buy Trades in (GWh) per Price Type							(%)
PPT	(S)	0.000	0.000	0.000	0.000	0.000	0.000	0.000	0.00%
HBD	(S)	2.192	1.069	0.887	1.649	1.793	1.455	0.958	57.55%
BLK	(S)	0.000	0.000	0.000	0.000	0.000	0.000	0.000	0.00%
CPL	(S)	0.321	0.700	0.683	0.472	1.107	0.016	0.707	42.45%
PPT	(B)	0.000	0.000	0.000	0.000	0.000	0.000	0.000	0.00%
HBD	(B)	1.172	1.405	1.182	1.661	2.573	1.302	1.332	80.02%
BLK	(B)	0.000	0.000	0.000	0.000	0.000	0.000	0.000	0.00%
CPL	(B)	1.341	0.364	0.388	0.459	0.327	0.170	0.333	19.98%
		Sell & Buy Orders Traded per Price Type							(%)
PPT	(S)	0	0	0	0	0	0	0	0.00%
HBD	(S)	377	161	149	321	335	226	210	100.00%
BLK	(S)	0	0	0	0	0	0	0	0.00%
PPT	(B)	0	0	0	0	0	0	0	0.00%
HBD	(B)	391	435	357	592	736	418	380	100.00%
BLK	(B)	0	0	0	0	0	0	0	0.00%

MCP Market Clearing Price (€/MWh)
PPT Priority Price-Taking
HBD Hybrid
BLK Block
CPL Market Coupling Flow

Trade's Volume Mix

	Sell - MWh	Buy - MWh	
Lignite (0.0%)	0	0	(0.0%)
Crete Conv. (0.0%)	0	0	(0.0%)
Gas (5.9%)	99	5	(0.3%)
Hydro (0.0%)	0	0	(0.0%)
Imports (42.5%)	707		
RES (37.3%)	622	979	(58.8%)
Crete RES (0.0%)	0	0	(0.0%)
BESS (0.2%)	4	25	(1.5%)
HV Load (0.4%)	6	7	(0.4%)
MV Load (2.1%)	36	21	(1.3%)
LV Load (11.5%)	192	296	(17.8%)
Crete Load (0.0%)	0	0	(0.0%)
Pumping (0.0%)	0	0	(0.0%)
Exports		333	(20.0%)
Sys.Losses (0.0%)	0	0	(0.0%)
D/R Load (0.0%)	0	0	(0.0%)

