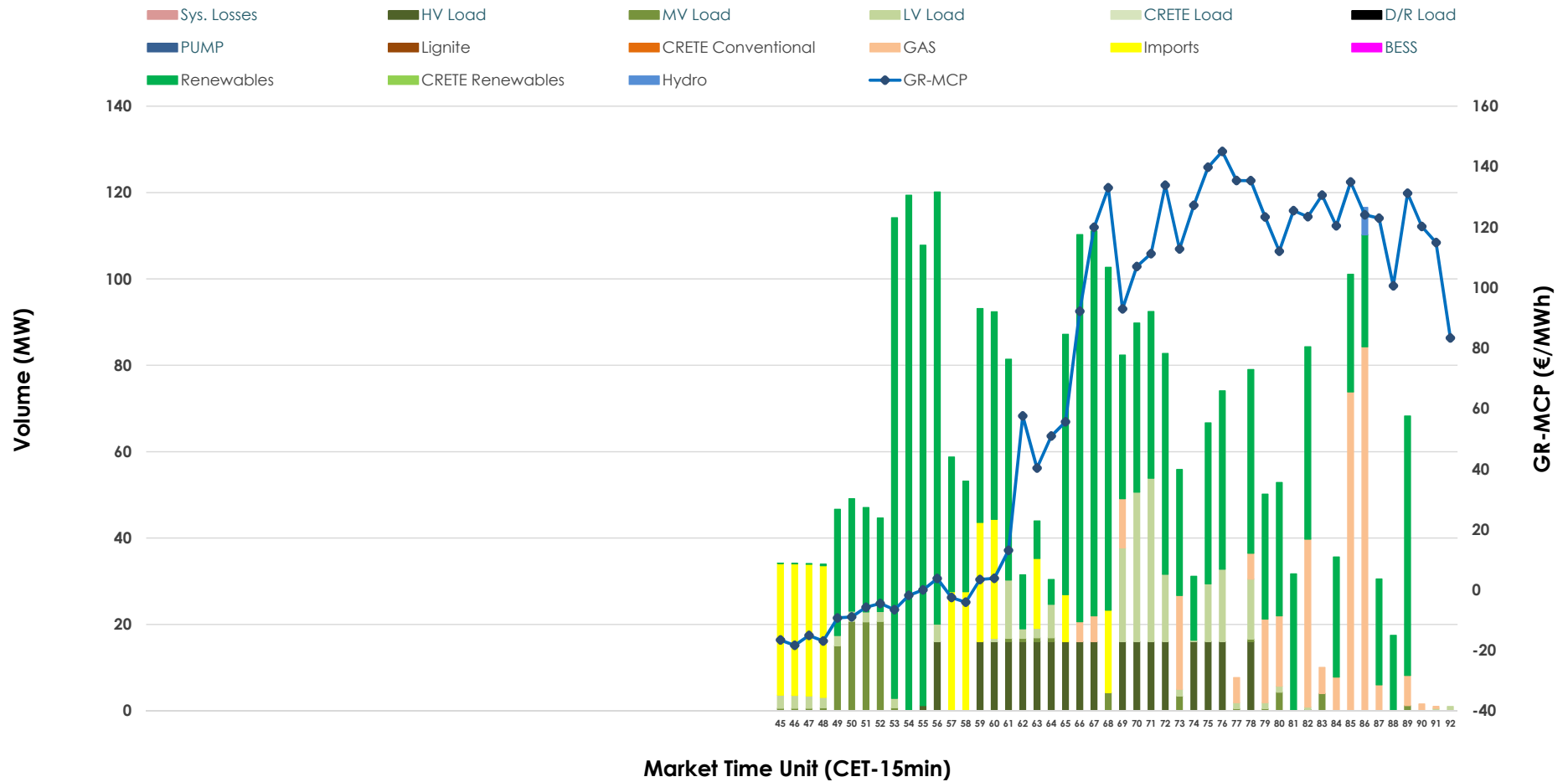


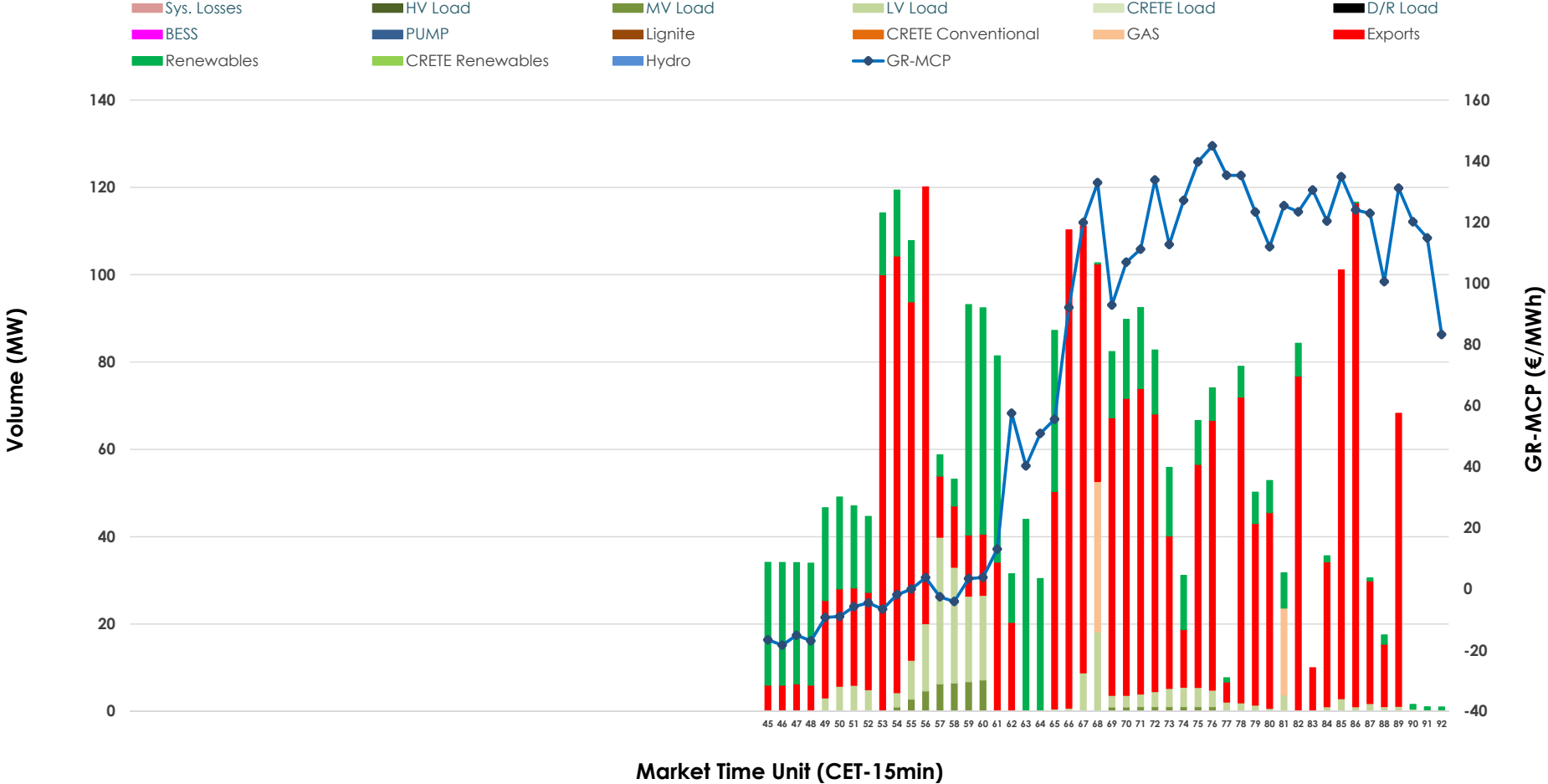


IDA '3' Market Outlook

29.03.2026 IDA '3' Market - Sell



29.03.2026 IDA '3' Market - Buy



GR Bidding Zone Weekly Figures

Delivery Day	23.03	24.03	25.03	26.03	27.03	28.03	29.03
	↑ 79%	↓ -29%	↓ -16%	↓ -22%	↑ 33%	↓ -5%	↓ -31%
Avg.MCP (€/MWh)	170.66	121.58	102.12	79.75	106.28	101.47	70.23
Max.MCP (€/MWh)	292.57	203.53	205.42	161.54	137.74	170.33	145.02
Min.MCP (€/MWh)	88.57	15.87	-7.26	-43.75	23.02	8.73	-18.36
	↔ 20%	→ 0%	↓ -36%	↑ 110%	↔ 24%	↓ -29%	↓ -28%
Tot.Vol(GWh)	1.71	1.71	1.10	2.31	2.88	2.05	1.47

Trades by Order Type

Delivery Day		23.03	24.03	25.03	26.03	27.03	28.03	29.03	
Ord Price Type		Sell & Buy Trades in (GWh) per Price Type							(%)
PPT	(S)	0.000	0.000	0.000	0.000	0.000	0.000	0.000	0.00%
HBD	(S)	0.817	0.430	0.414	0.535	0.901	0.787	0.667	90.54%
BLK	(S)	0.000	0.000	0.000	0.000	0.000	0.000	0.000	0.00%
CPL	(S)	0.039	0.426	0.138	0.622	0.540	0.239	0.070	9.46%
PPT	(B)	0.000	0.000	0.000	0.000	0.000	0.000	0.000	0.00%
HBD	(B)	0.528	0.677	0.353	0.650	0.976	0.857	0.249	33.87%
BLK	(B)	0.000	0.000	0.000	0.000	0.000	0.000	0.000	0.00%
CPL	(B)	0.328	0.178	0.199	0.508	0.465	0.169	0.487	66.13%
		Sell & Buy Orders Traded per Price Type							(%)
PPT	(S)	0	0	0	0	0	0	0	0.00%
HBD	(S)	168	158	224	156	139	200	193	100.00%
BLK	(S)	0	0	0	0	0	0	0	0.00%
PPT	(B)	0	0	0	0	0	0	0	0.00%
HBD	(B)	216	273	143	142	281	259	130	100.00%
BLK	(B)	0	0	0	0	0	0	0	0.00%

- MCP** Market Clearing Price (€/MWh)
- PPT** Priority Price-Taking
- HBD** Hybrid
- BLK** Block
- CPL** Market Coupling Flow

Trade's Volume Mix

	Sell - MWh	Buy - MWh	
Lignite (0.0%)	0	0	(0.0%)
Crete Conv. (0.0%)	0	0	(0.0%)
Gas (10.8%)	79	14	(1.8%)
Hydro (0.2%)	2	0	(0.0%)
Imports (9.5%)	70		
RES (58.9%)	434	169	(22.9%)
Crete RES (0.0%)	0	0	(0.0%)
BESS (0.0%)	0	0	(0.0%)
HV Load (9.8%)	72	0	(0.0%)
MV Load (3.5%)	26	11	(1.5%)
LV Load (7.3%)	54	56	(7.6%)
Crete Load (0.0%)	0	0	(0.0%)
Pumping (0.0%)	0	0	(0.0%)
Exports		487	(66.1%)
Sys.Losses (0.0%)	0	0	(0.0%)
D/R Load (0.0%)	0	0	(0.0%)

