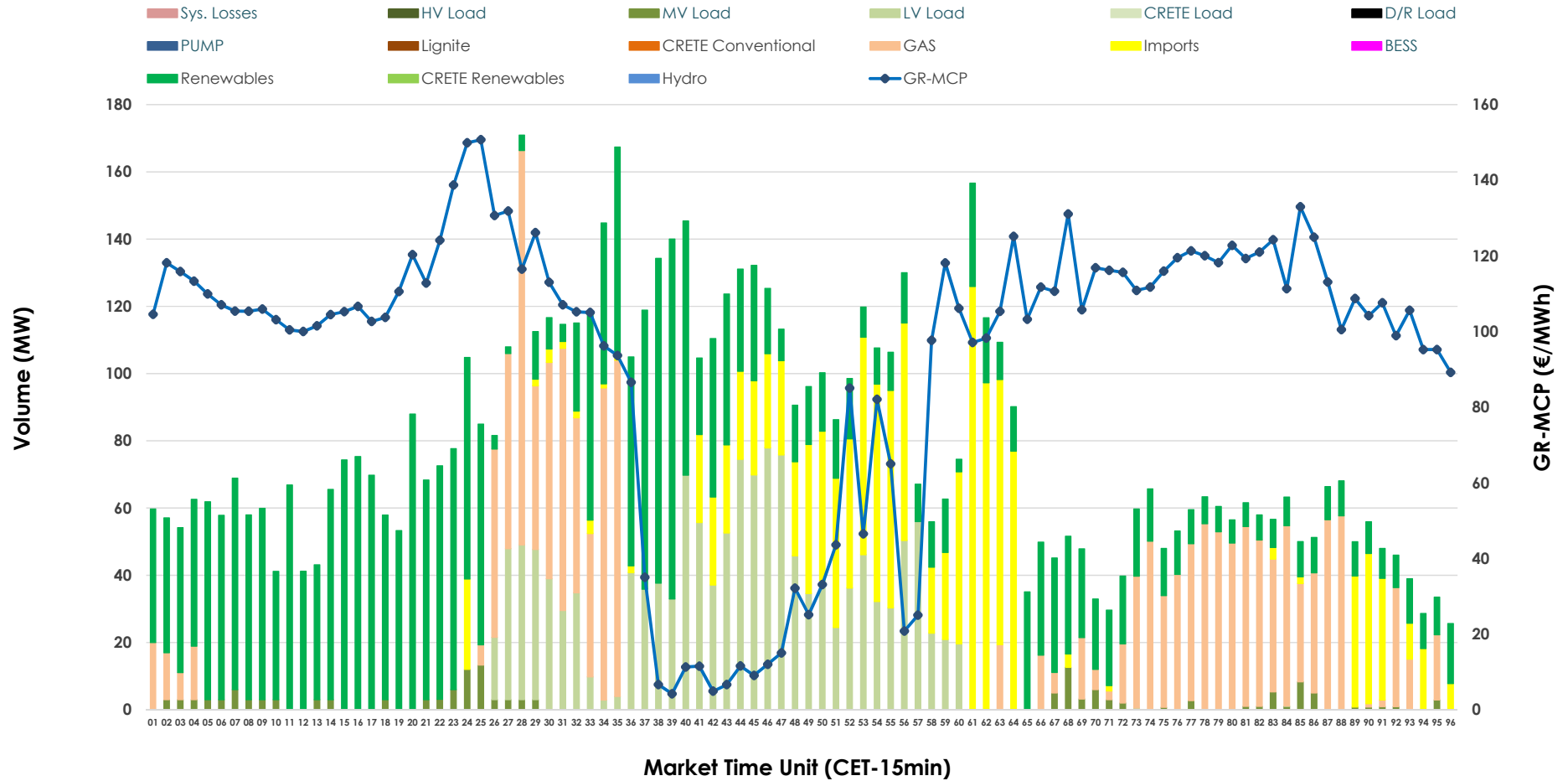


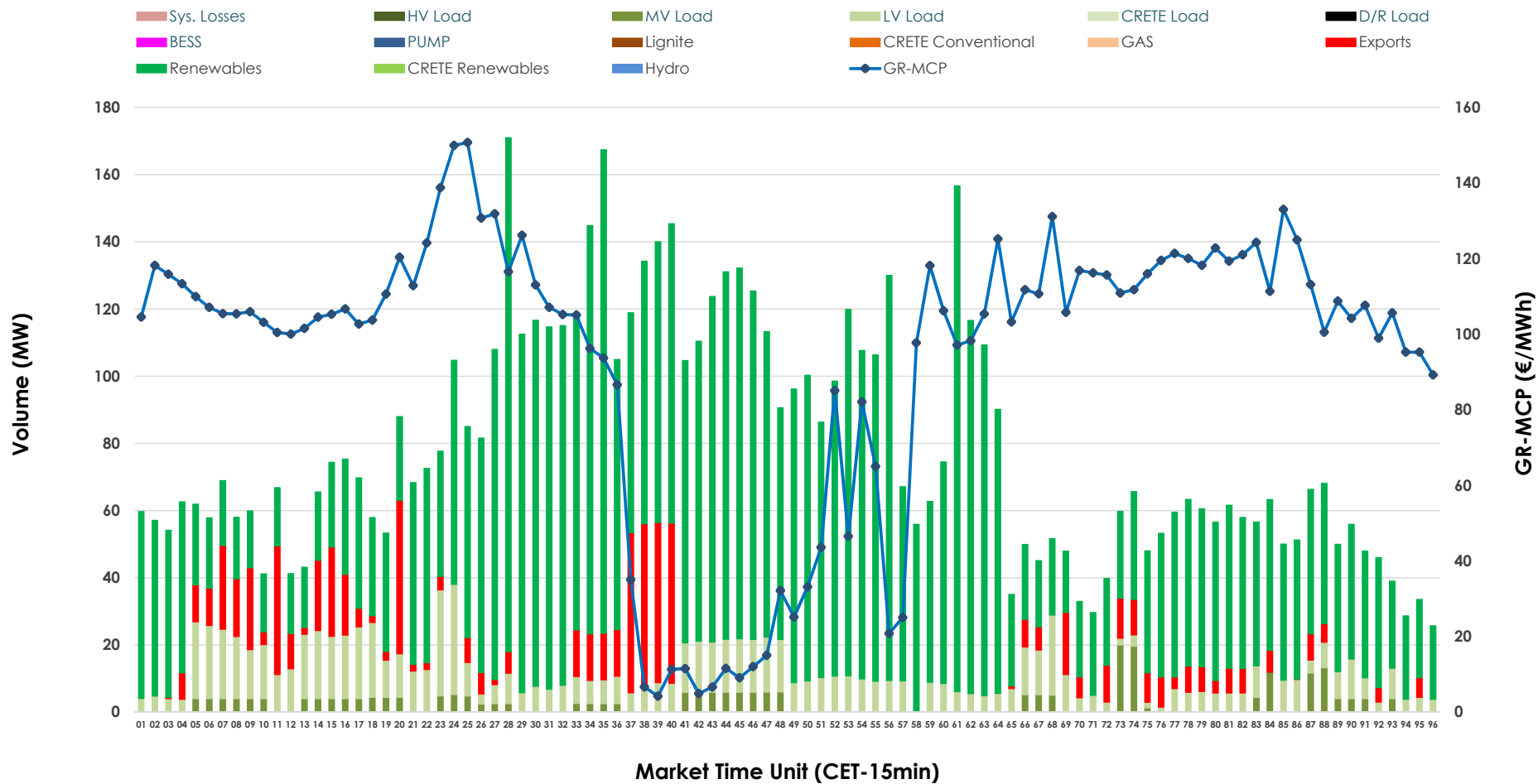


IDA '2' Market Outlook

27.03.2026 IDA '2' Market - Sell



27.03.2026 IDA '2' Market - Buy



GR Bidding Zone Weekly Figures

Delivery Day	21.03	22.03	23.03	24.03	25.03	26.03	27.03
	👇 -14%	👇 -10%	👆 70%	👇 -27%	👇 -23%	👇 -9%	👆 22%
Avg.MCP (€/MWh)	95.69	86.52	147.38	108.28	83.72	76.43	93.44
Max.MCP (€/MWh)	170.48	195.14	281.69	211.00	205.42	162.57	150.70
Min.MCP (€/MWh)	-10.46	-10.00	78.10	13.54	-18.99	-10.32	4.22
	👆 2%	👆 52%	👆 1%	👇 -19%	👇 -38%	👆 52%	👇 -25%
Tot.Vol(GWh)	4.32	6.58	6.67	5.43	3.37	5.11	3.81

Trades by Order Type

Delivery Day		21.03	22.03	23.03	24.03	25.03	26.03	27.03	
Ord Price Type		Sell & Buy Trades in (GWh) per Price Type							(%)
PPT	(S)	0.000	0.000	0.000	0.000	0.000	0.000	0.000	0.00%
HBD	(S)	1.990	2.122	2.540	1.542	1.586	2.013	1.571	82.39%
BLK	(S)	0.000	0.000	0.000	0.000	0.000	0.000	0.000	0.00%
CPL	(S)	0.173	1.168	0.795	1.172	0.097	0.544	0.336	17.61%
PPT	(B)	0.000	0.000	0.000	0.000	0.000	0.000	0.000	0.00%
HBD	(B)	1.930	2.586	1.590	1.685	1.683	1.977	1.730	90.72%
BLK	(B)	0.000	0.000	0.000	0.000	0.000	0.000	0.000	0.00%
CPL	(B)	0.232	0.704	1.745	1.030	0.000	0.579	0.177	9.28%
		Sell & Buy Orders Traded per Price Type							(%)
PPT	(S)	0	0	0	0	0	0	0	0.00%
HBD	(S)	212	358	324	263	227	405	345	100.00%
BLK	(S)	0	0	0	0	0	0	0	0.00%
PPT	(B)	0	0	0	0	0	0	0	0.00%
HBD	(B)	670	483	392	583	354	374	700	100.00%
BLK	(B)	0	0	0	0	0	0	0	0.00%

- MCP** Market Clearing Price (€/MWh)
- PPT** Priority Price-Taking
- HBD** Hybrid
- BLK** Block
- CPL** Market Coupling Flow

Trade's Volume Mix

	Sell - MWh	Buy - MWh	
Lignite (0.0%)	0	0	(0.0%)
Crete Conv. (0.0%)	0	0	(0.0%)
Gas (22.0%)	419	0	(0.0%)
Hydro (0.0%)	0	0	(0.0%)
Imports (17.6%)	336		
RES (40.2%)	766	1,423	(74.6%)
Crete RES (0.0%)	0	0	(0.0%)
BESS (0.0%)	0	0	(0.0%)
HV Load (0.0%)	0	0	(0.0%)
MV Load (2.0%)	38	63	(3.3%)
LV Load (18.3%)	348	244	(12.8%)
Crete Load (0.0%)	0	0	(0.0%)
Pumping (0.0%)	0	0	(0.0%)
Exports		177	(9.3%)
Sys.Losses (0.0%)	0	0	(0.0%)
D/R Load (0.0%)	0	0	(0.0%)

