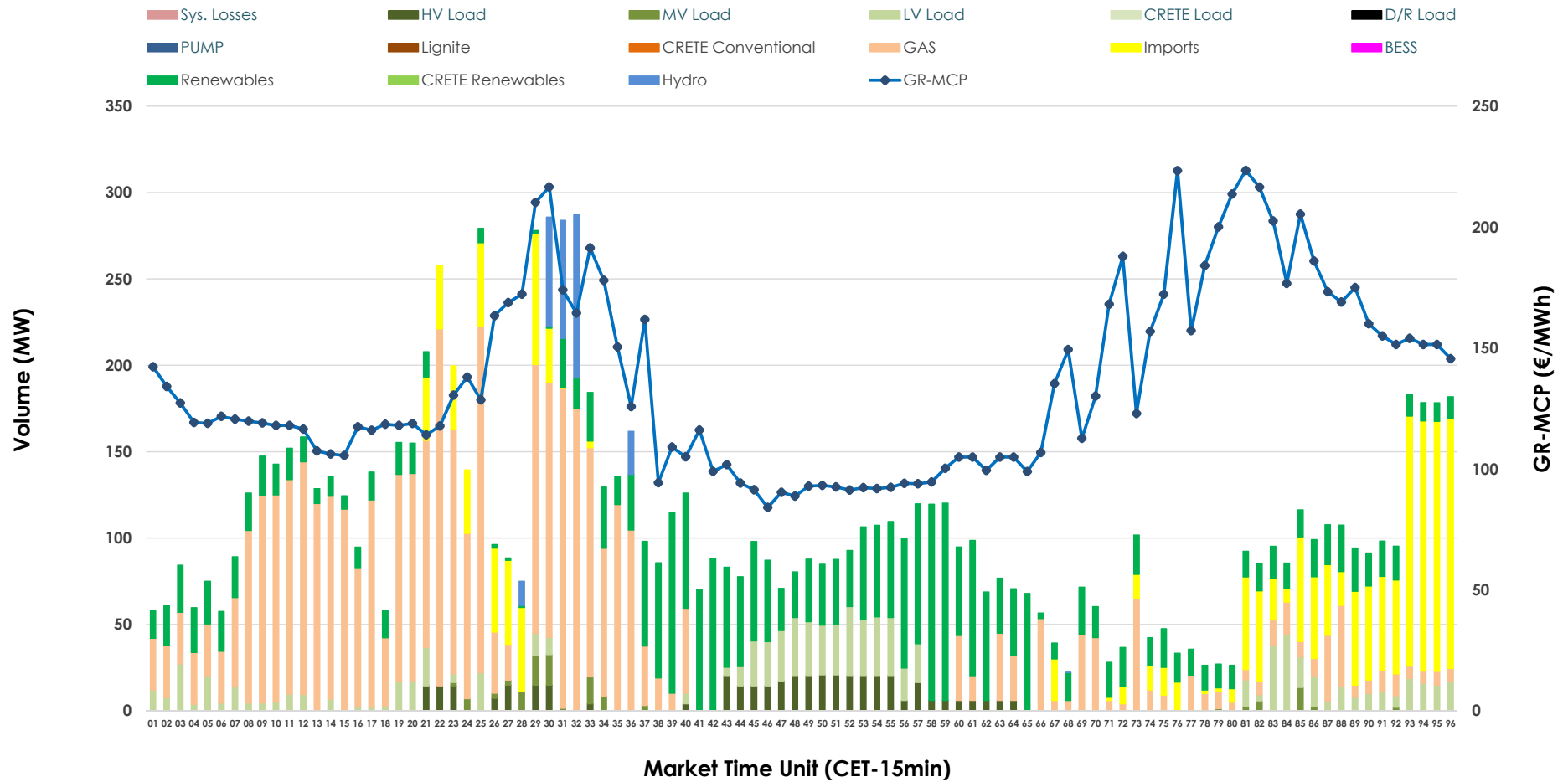


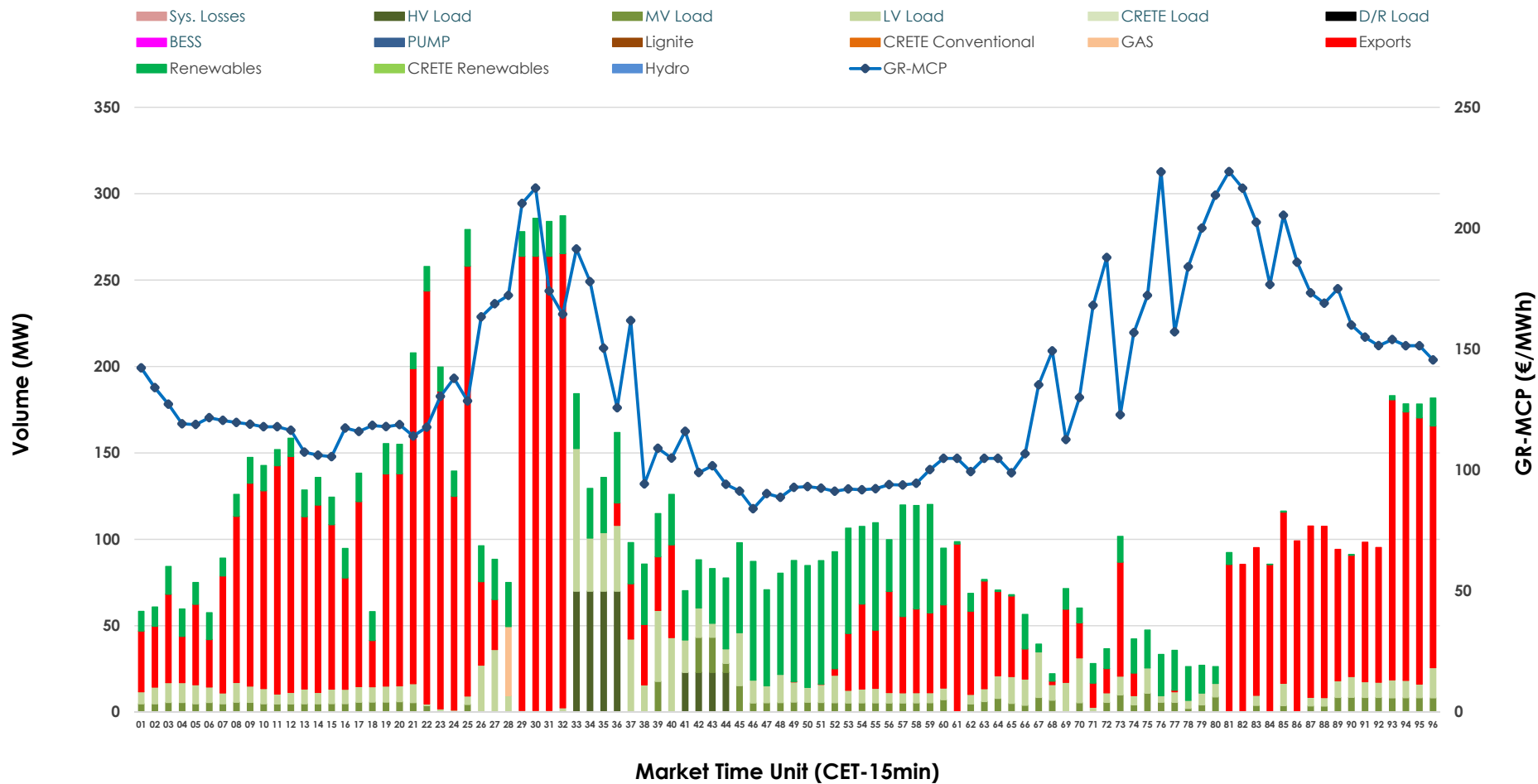


IDA '2' Market Outlook

31.03.2026 IDA '2' Market - Sell



31.03.2026 IDA '2' Market - Buy



GR Bidding Zone Weekly Figures

Delivery Day	25.03	26.03	27.03	28.03	29.03	30.03	31.03
	👇 -23%	👇 -9%	👆 22%	👇 -11%	👇 -12%	👆 57%	👆 18%
Avg.MCP (€/MWh)	83.72	76.43	93.44	82.83	73.07	115.06	135.71
Max.MCP (€/MWh)	205.42	162.57	150.70	159.68	139.62	222.69	223.43
Min.MCP (€/MWh)	-18.99	-10.32	4.22	6.23	-16.08	0.00	84.06
	👇 -38%	👆 52%	👇 -25%	👆 9%	👇 -17%	👆 11%	👆 37%
Tot.Vol(GWh)	3.37	5.11	3.81	4.14	3.45	3.84	5.26

Trades by Order Type

Delivery Day		25.03	26.03	27.03	28.03	29.03	30.03	31.03	
Ord Price Type		Sell & Buy Trades in (GWh) per Price Type							(%)
PPT	(S)	0.000	0.000	0.000	0.000	0.000	0.000	0.000	0.00%
HBD	(S)	1.586	2.013	1.571	0.713	1.412	1.209	2.216	84.19%
BLK	(S)	0.000	0.000	0.000	0.000	0.000	0.000	0.000	0.00%
CPL	(S)	0.097	0.544	0.336	1.357	0.312	0.709	0.416	15.81%
PPT	(B)	0.000	0.000	0.000	0.000	0.000	0.000	0.000	0.00%
HBD	(B)	1.683	1.977	1.730	1.309	0.762	1.465	1.028	39.04%
BLK	(B)	0.000	0.000	0.000	0.000	0.000	0.000	0.000	0.00%
CPL	(B)	0.000	0.579	0.177	0.762	0.962	0.453	1.605	60.96%
		Sell & Buy Orders Traded per Price Type							(%)
PPT	(S)	0	0	0	0	0	0	0	0.00%
HBD	(S)	227	405	345	381	375	407	443	100.00%
BLK	(S)	0	0	0	0	0	0	0	0.00%
PPT	(B)	0	0	0	0	0	0	0	0.00%
HBD	(B)	354	374	700	490	233	511	587	100.00%
BLK	(B)	0	0	0	0	0	0	0	0.00%

- MCP** Market Clearing Price (€/MWh)
- PPT** Priority Price-Taking
- HBD** Hybrid
- BLK** Block
- CPL** Market Coupling Flow

Trade's Volume Mix

	Sell - MWh	Buy - MWh	
Lignite (0.0%)	0	0	(0.0%)
Crete Conv. (0.0%)	0	0	(0.0%)
Gas (41.2%)	1,084	10	(0.4%)
Hydro (2.5%)	66	0	(0.0%)
Imports (15.8%)	416		
RES (26.8%)	707	522	(19.8%)
Crete RES (0.0%)	0	0	(0.0%)
BESS (0.0%)	0	0	(0.0%)
HV Load (3.9%)	103	93	(3.5%)
MV Load (1.1%)	29	117	(4.4%)
LV Load (8.6%)	227	286	(10.9%)
Crete Load (0.0%)	0	0	(0.0%)
Pumping (0.0%)	0	0	(0.0%)
Exports		1,605	(61.0%)
Sys.Losses (0.0%)	0	0	(0.0%)
D/R Load (0.0%)	0	0	(0.0%)

