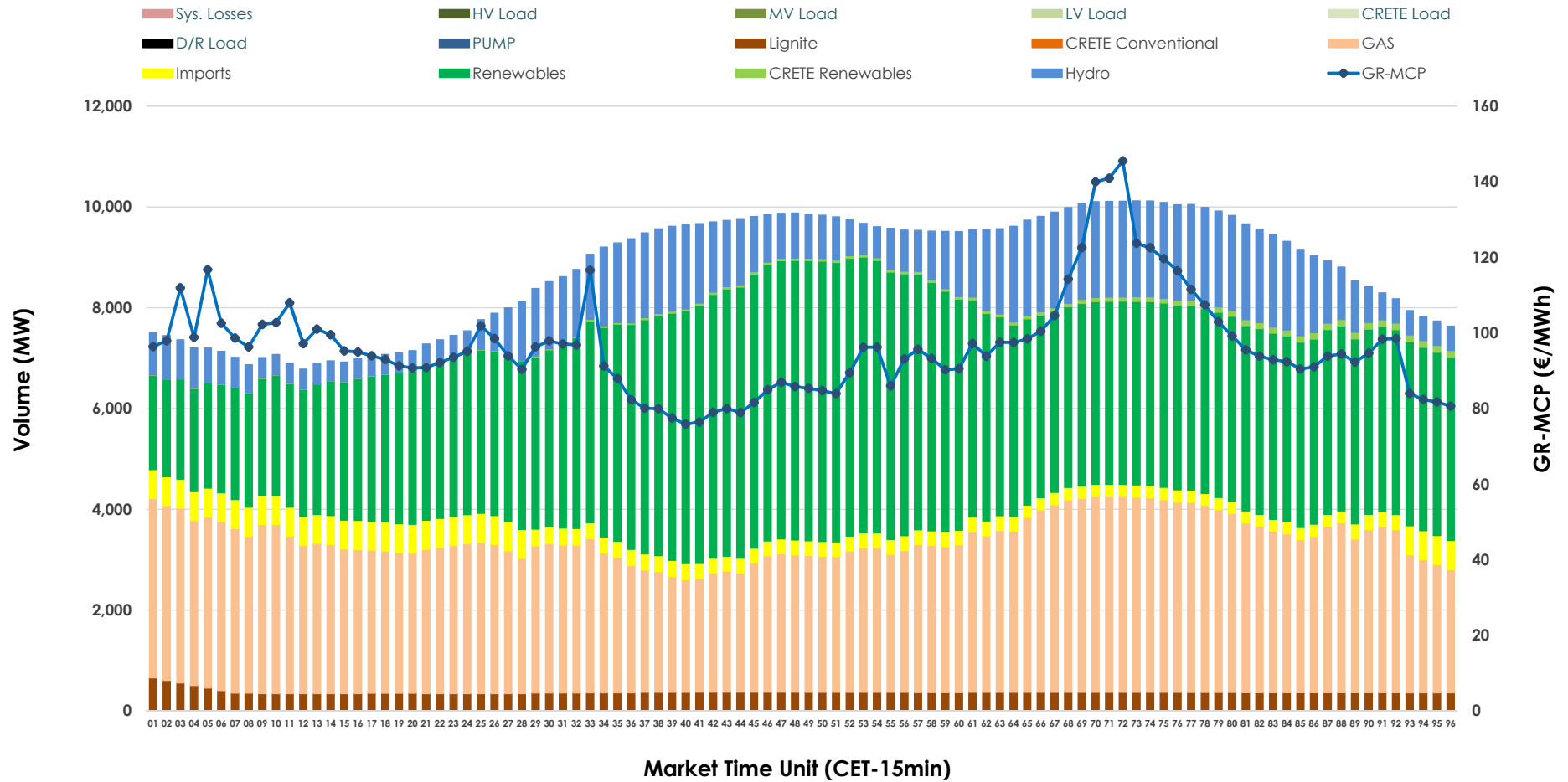


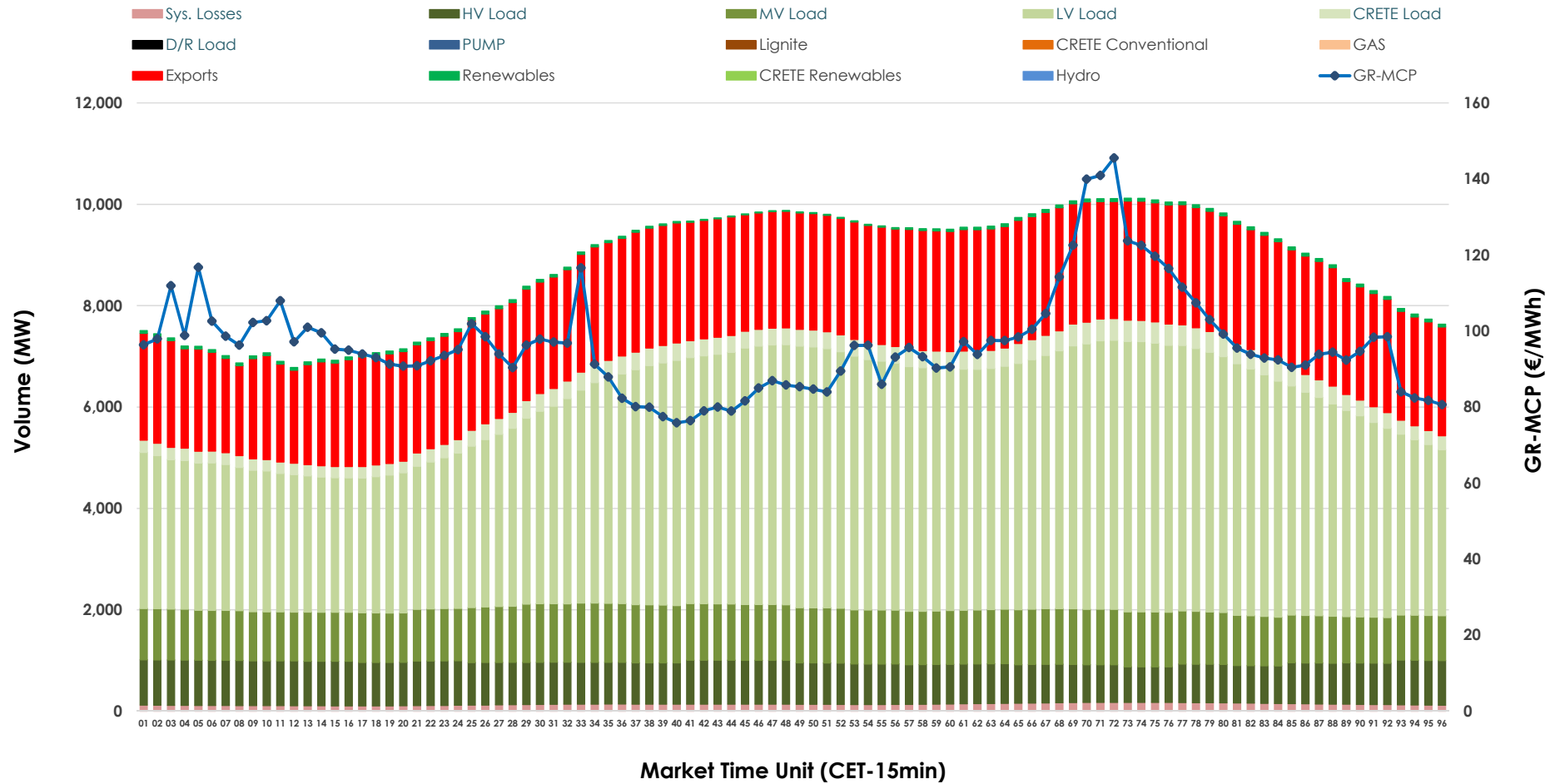


Day-Ahead Market Outlook

17.01.2026 Day-Ahead Market - Sell



17.01.2026 Day-Ahead Market - Buy



GR Bidding Zone Weekly Figures

Delivery Day	11.01	12.01	13.01	14.01	15.01	16.01	17.01
	↗ 4%	↗ 8%	↗ 53%	↘ -10%	↔ 1%	↘ -5%	↘ -24%
Avg.MCP (€/MWh)	88.93	95.96	147.20	132.48	133.24	126.58	96.63
Max.MCP (€/MWh)	130.15	228.88	421.38	314.44	292.62	207.32	145.50
Min.MCP (€/MWh)	43.87	0.01	84.25	74.99	64.77	75.00	75.87
	↘ -5%	↗ 20%	↗ 1%	↘ -4%	↘ -2%	↘ -5%	↗ 3%
Tot.Vol(GWh)	378.47	453.20	458.11	437.97	429.85	408.72	421.63

Trades by Order Type

Delivery Day		11.01	12.01	13.01	14.01	15.01	16.01	17.01	
Ord Price Type		Sell & Buy Trades in (GWh) per Price Type							(%)
PPT	(S)	79.964	83.648	74.376	67.605	66.258	64.295	84.263	39.97%
HBD	(S)	69.087	90.350	80.274	72.540	75.381	69.338	77.931	36.97%
BLK	(S)	40.164	52.138	71.394	76.235	71.196	67.165	48.620	23.06%
CPL	(S)	0.022	0.467	3.009	2.605	2.091	3.563	0.000	0.00%
PPT	(B)	13.279	15.032	15.617	16.138	16.397	15.923	14.574	6.91%
HBD	(B)	140.584	170.178	175.387	165.530	161.620	156.175	154.660	73.36%
BLK	(B)	0.000	0.000	0.000	0.000	0.000	0.000	0.000	0.00%
CPL	(B)	35.374	41.393	38.050	37.316	36.909	32.263	41.579	19.72%
		Sell & Buy Orders Traded per Price Type							(%)
PPT	(S)	1915	2028	2186	2159	2180	2164	2046	42.68%
HBD	(S)	2794	2832	3005	2917	2973	2962	2727	56.88%
BLK	(S)	21	20	24	25	21	22	21	0.44%
PPT	(B)	2370	2298	2294	2269	2301	2283	2274	35.92%
HBD	(B)	4002	4074	4079	4075	4109	4065	4057	64.08%
BLK	(B)	0	0	0	0	0	0	0	0.00%

MCP Market Clearing Price (€/MWh)
PPT Priority Price-Taking
HBD Hybrid
BLK Block
CPL Market Coupling Flow

Trade's Volume Mix

		Sell - MWh	Buy - MWh	
Lignite	(4.2%)	8,851	0	(0.0%)
Crete Conv.	(0.0%)	0	0	(0.0%)
Gas	(34.9%)	73,492	0	(0.0%)
Hydro	(12.8%)	26,957	0	(0.0%)
Imports	(4.3%)	9,081		
RES	(43.2%)	91,104	1,109	(0.5%)
Crete RES	(0.6%)	1,328	0	(0.0%)
HV Load	(0.0%)	0	19,720	(9.4%)
MV Load	(0.0%)	0	25,005	(11.9%)
LV Load	(0.0%)	0	100,063	(47.5%)
Crete Load	(0.0%)	0	7,778	(3.7%)
Pumping	(0.0%)	0	0	(0.0%)
Exports			53,891	(25.6%)
Sys.Losses	(0.0%)	0	3,248	(1.5%)
D/R Load	(0.0%)	0	0	(0.0%)

