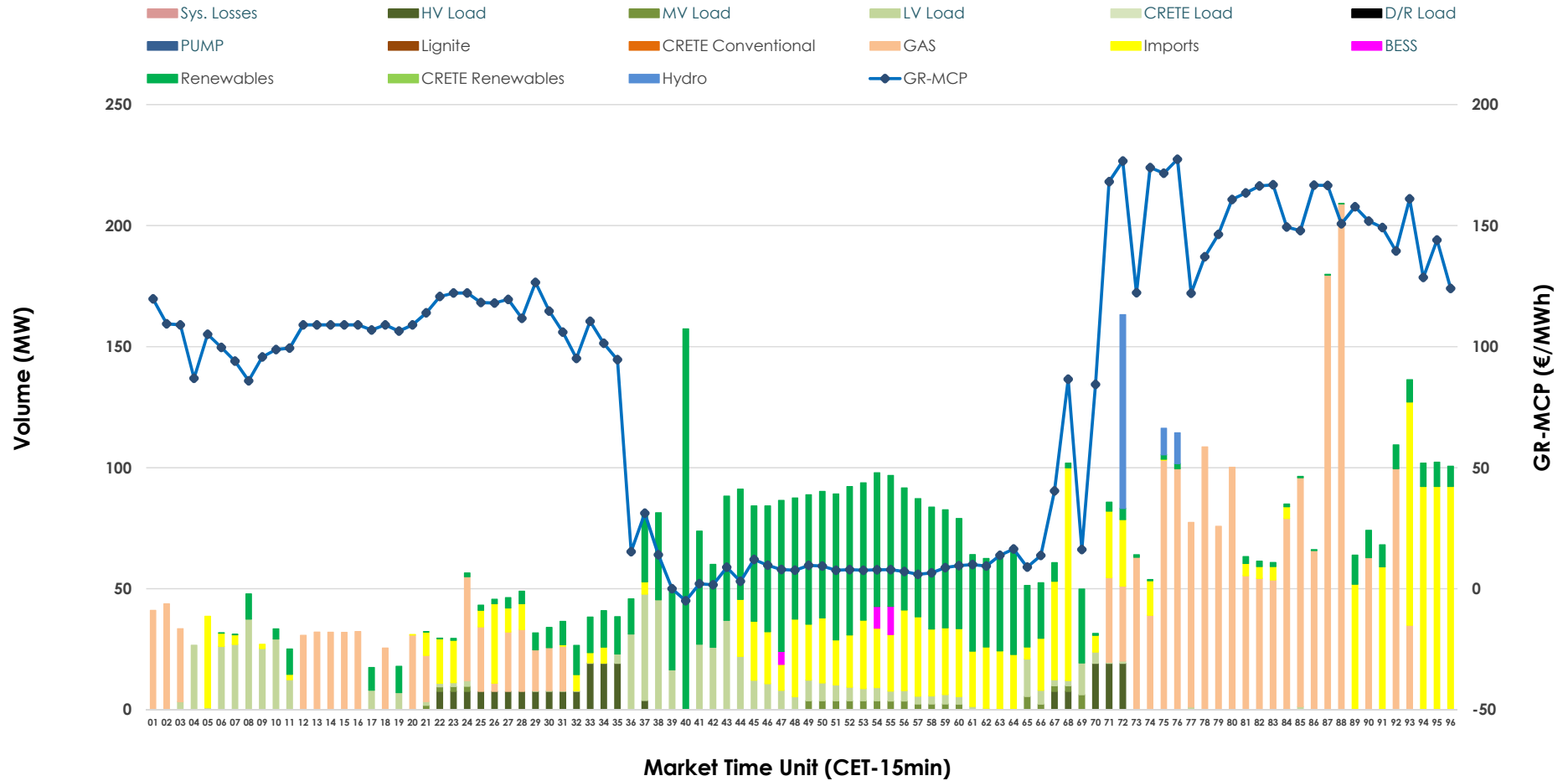


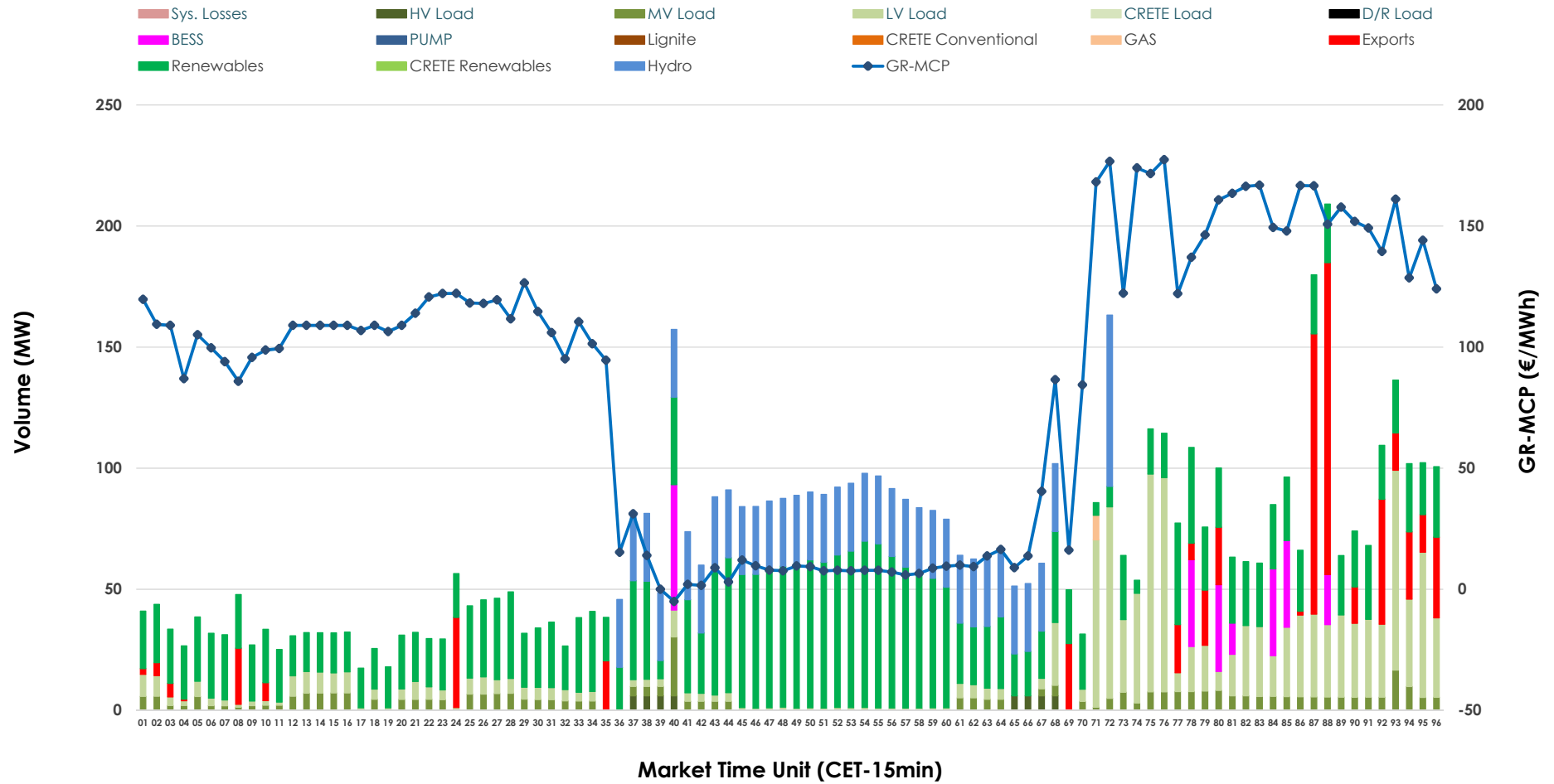


IDA '1' Market Outlook

15.06.2026 IDA '1' Market - Sell



15.06.2026 IDA '1' Market - Buy



GR Bidding Zone Weekly Figures

Delivery Day	09.06	10.06	11.06	12.06	13.06	14.06	15.06
	↗ 18%	↘ -9%	↘ -4%	↗ 16%	↘ -57%	↗ 25%	↗ 39%
Avg.MCP (€/MWh)	113.63	103.97	99.61	115.33	49.72	62.03	86.15
Max.MCP (€/MWh)	216.03	199.87	171.71	176.30	166.27	185.00	177.42
Min.MCP (€/MWh)	-4.76	-7.15	14.37	68.99	-31.98	-6.20	-5.00
	↘ -34%	↗ 7%	↘ -7%	↗ 2%	↗ 56%	↘ -25%	↘ -40%
Tot.Vol(GWh)	4.54	4.85	4.51	4.60	7.18	5.41	3.25

Trades by Order Type

Delivery Day		09.06	10.06	11.06	12.06	13.06	14.06	15.06	
Ord Price Type		Sell & Buy Trades in (GWh) per Price Type							(%)
PPT	(S)	0.000	0.000	0.000	0.000	0.000	0.000	0.000	0.00%
HBD	(S)	1.484	1.778	1.639	1.731	3.148	2.036	1.264	77.89%
BLK	(S)	0.000	0.000	0.000	0.000	0.000	0.000	0.000	0.00%
CPL	(S)	0.785	0.647	0.617	0.571	0.441	0.669	0.359	22.11%
PPT	(B)	0.000	0.000	0.000	0.000	0.000	0.000	0.000	0.00%
HBD	(B)	1.388	0.828	1.062	1.814	3.308	2.175	1.471	90.64%
BLK	(B)	0.000	0.000	0.000	0.000	0.000	0.000	0.000	0.00%
CPL	(B)	0.881	1.597	1.194	0.488	0.281	0.529	0.152	9.36%
		Sell & Buy Orders Traded per Price Type							(%)
PPT	(S)	0	0	0	0	0	0	0	0.00%
HBD	(S)	211	376	209	411	335	224	305	100.00%
BLK	(S)	0	0	0	0	0	0	0	0.00%
PPT	(B)	0	0	0	0	0	0	0	0.00%
HBD	(B)	820	549	639	749	739	681	633	100.00%
BLK	(B)	0	0	0	0	0	0	0	0.00%

- MCP** Market Clearing Price (€/MWh)
- PPT** Priority Price-Taking
- HBD** Hybrid
- BLK** Block
- CPL** Market Coupling Flow

Trade's Volume Mix

	Sell - MWh	Buy - MWh	
Lignite	0	0	(0.0%)
Crete Conv.	0	0	(0.0%)
Gas	561	3	(0.2%)
Hydro	26	249	(15.3%)
Imports	359		
RES	447	732	(45.1%)
Crete RES	0	0	(0.0%)
BESS	7	57	(3.5%)
HV Load	54	12	(0.7%)
MV Load	16	101	(6.2%)
LV Load	153	319	(19.6%)
Crete Load	0	0	(0.0%)
Pumping	0	0	(0.0%)
Exports		152	(9.4%)
Sys.Losses	0	0	(0.0%)
D/R Load	0	0	(0.0%)

