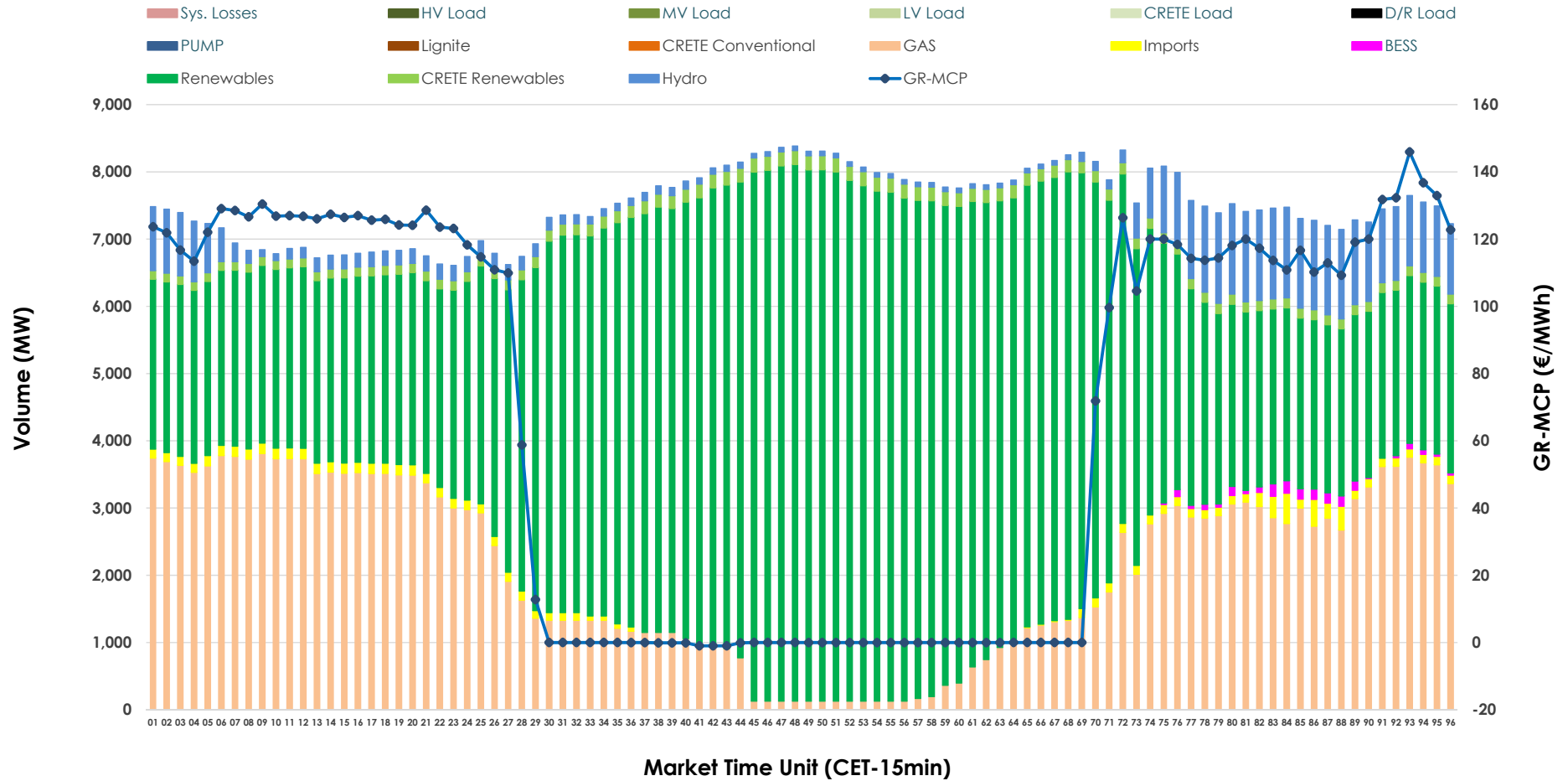


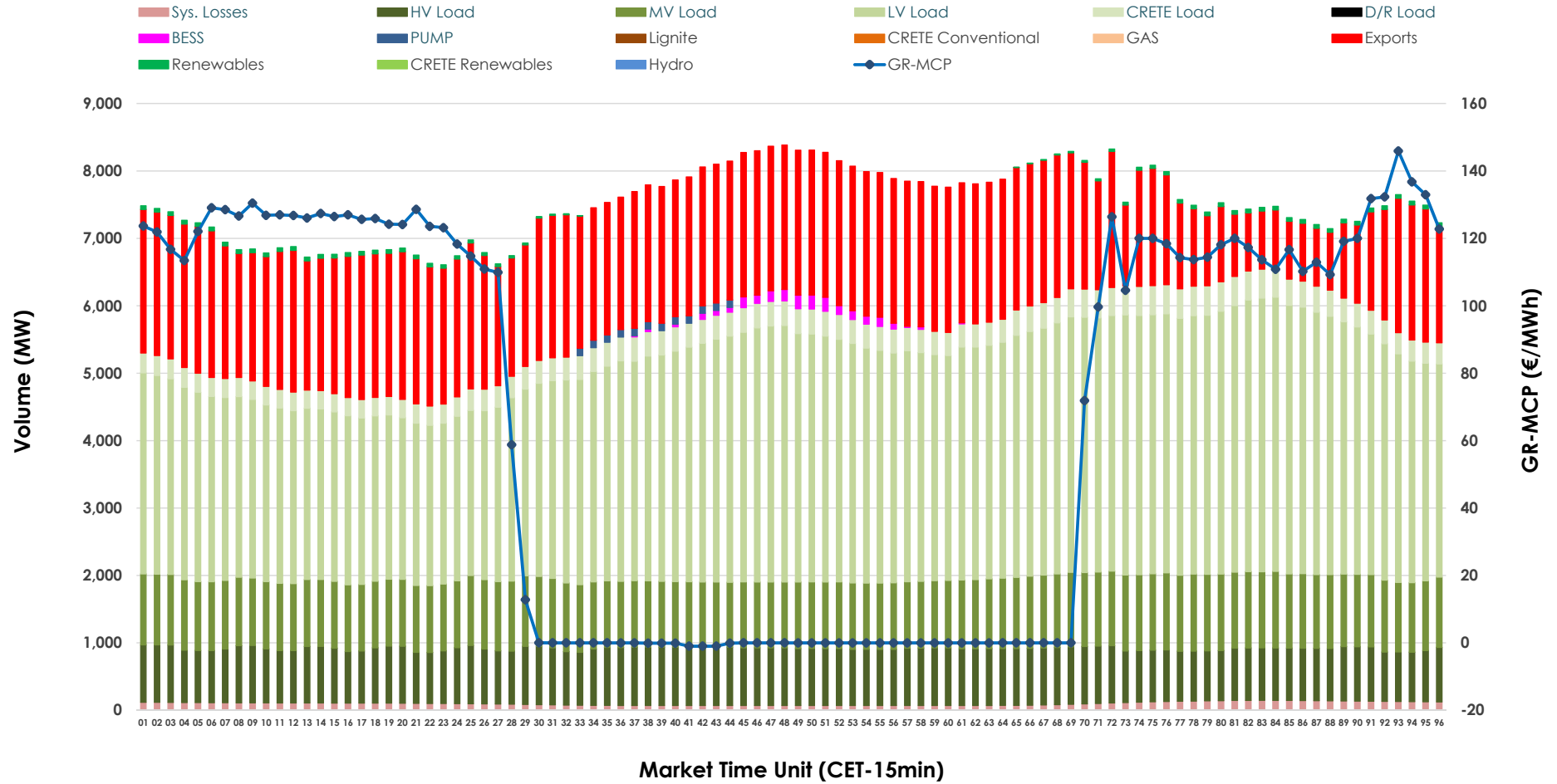


Day-Ahead Market Outlook

21.06.2026 Day-Ahead Market - Sell



21.06.2026 Day-Ahead Market - Buy



GR Bidding Zone Weekly Figures

Delivery Day	15.06	16.06	17.06	18.06	19.06	20.06	21.06
	↑ 45%	↔ 16%	↔ 18%	↓ -36%	→ 0%	↘ -10%	↘ -1%
Avg.MCP (€/MWh)	86.75	100.92	119.31	76.83	76.84	69.40	68.43
Max.MCP (€/MWh)	180.14	172.17	185.46	170.45	150.05	143.77	145.91
Min.MCP (€/MWh)	0.00	15.33	36.53	-0.01	-0.01	-0.02	-1.00
	↔ 24%	↔ 2%	→ 0%	↔ 15%	→ 1%	↘ -5%	↘ -3%
Tot.Vol(GWh)	331.94	339.97	340.24	391.22	394.14	373.56	360.69

Trades by Order Type

Delivery Day		15.06	16.06	17.06	18.06	19.06	20.06	21.06	
Ord Price Type		Sell & Buy Trades in (GWh) per Price Type							(%)
PPT	(S)	56.785	55.273	57.588	76.033	82.897	83.379	83.637	46.38%
HBD	(S)	71.647	71.874	69.566	86.738	84.108	75.272	67.229	37.28%
BLK	(S)	27.719	33.076	33.077	32.840	30.010	28.129	29.177	16.18%
CPL	(S)	9.821	9.764	9.890	0.000	0.053	0.000	0.303	0.17%
PPT	(B)	16.480	16.485	16.785	16.742	17.703	17.500	16.256	9.01%
HBD	(B)	134.034	146.696	146.808	152.368	152.606	141.182	132.687	73.57%
BLK	(B)	0.000	0.000	0.000	0.000	0.000	0.000	0.000	0.00%
CPL	(B)	15.459	6.806	6.527	26.501	26.758	28.098	31.403	17.41%
		Sell & Buy Orders Traded per Price Type							(%)
PPT	(S)	1498	1584	1618	1634	1607	1669	1654	36.72%
HBD	(S)	3465	3701	3804	3357	3327	3083	2836	62.97%
BLK	(S)	14	14	10	11	14	15	14	0.31%
PPT	(B)	2351	2347	2351	2371	2411	2407	2448	38.86%
HBD	(B)	3805	3818	3769	3993	4043	4044	3852	61.14%
BLK	(B)	0	0	0	0	0	0	0	0.00%

MCP Market Clearing Price (€/MWh)
PPT Priority Price-Taking
HBD Hybrid
BLK Block
CPL Market Coupling Flow

Trade's Volume Mix

	Sell - MWh	Buy - MWh	
Lignite (0.0%)	0	0	(0.0%)
Crete Conv. (0.0%)	0	0	(0.0%)
Gas (28.3%)	51,123	0	(0.0%)
Hydro (5.8%)	10,402	0	(0.0%)
Imports (1.3%)	2,416		
RES (62.1%)	111,958	727	(0.4%)
Crete RES (2.2%)	3,958	0	(0.0%)
BESS (0.3%)	489	556	(0.3%)
HV Load (0.0%)	0	19,613	(10.9%)
MV Load (0.0%)	0	24,805	(13.8%)
LV Load (0.0%)	0	78,852	(43.7%)
Crete Load (0.0%)	0	8,328	(4.6%)
Pumping (0.0%)	0	330	(0.2%)
Exports		44,764	(24.8%)
Sys.Losses (0.0%)	0	2,371	(1.3%)
D/R Load (0.0%)	0	0	(0.0%)

