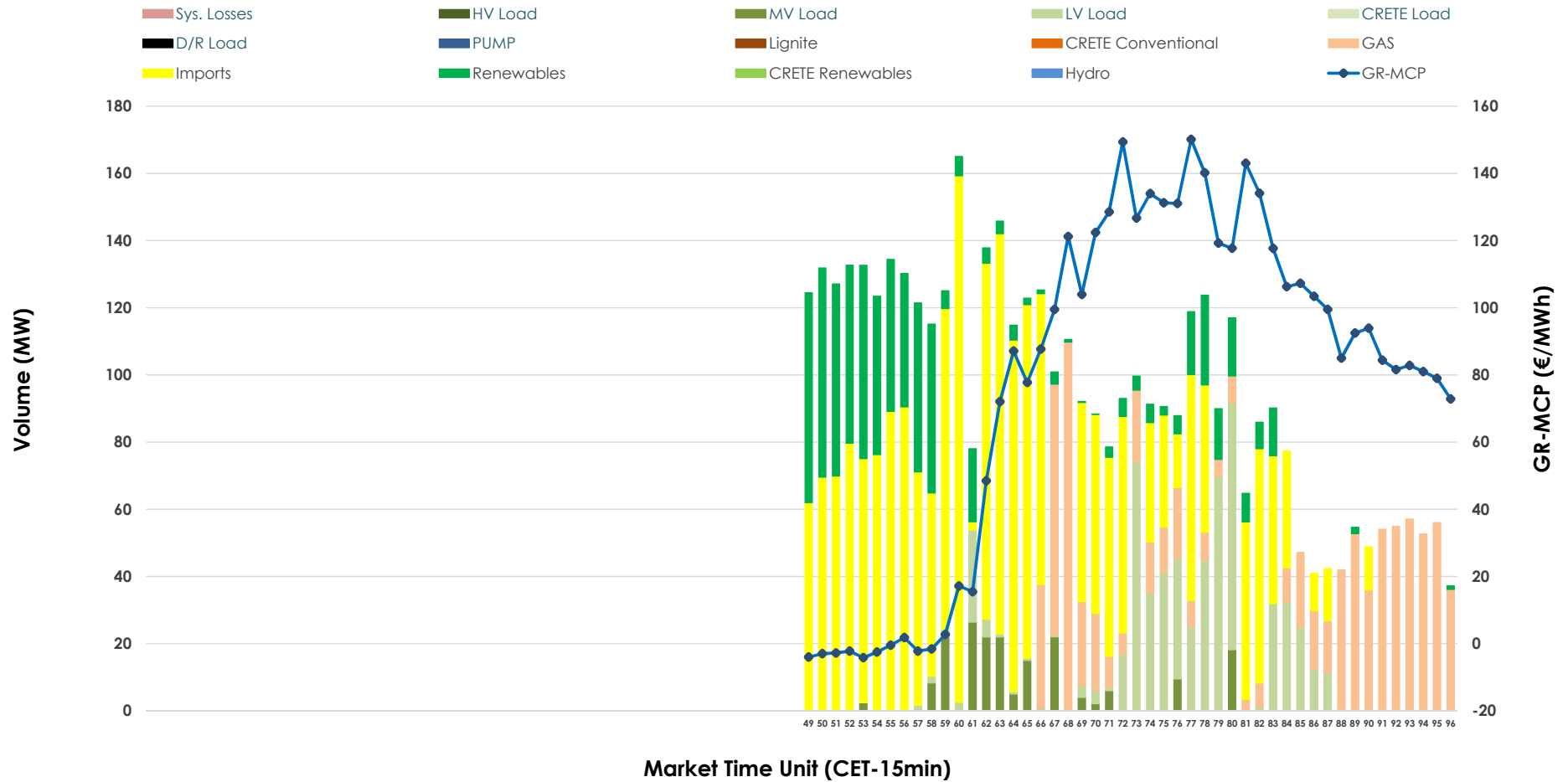


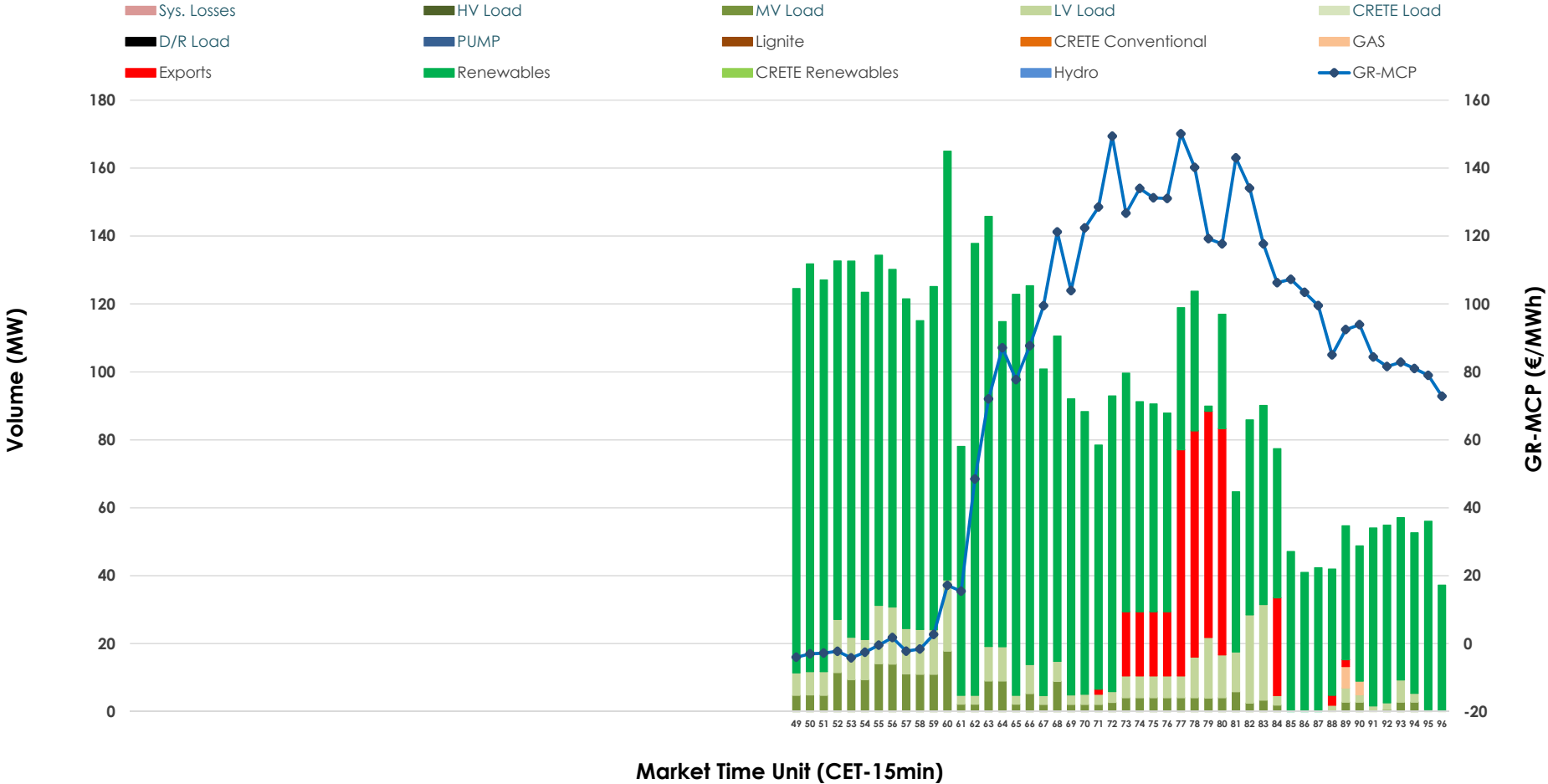


IDA '3' Market Outlook

27.02.2026 IDA '3' Market - Sell



27.02.2026 IDA '3' Market - Buy



GR Bidding Zone Weekly Figures

Delivery Day	21.02	22.02	23.02	24.02	25.02	26.02	27.02
	➔ 0%	↓ -33%	↑ 51%	↔ 1%	➔ -1%	↓ -19%	↑ 33%
Avg.MCP (€/MWh)	71.42	47.58	71.88	72.70	72.18	58.21	77.64
Max.MCP (€/MWh)	112.00	109.84	141.90	133.89	148.00	131.89	150.11
Min.MCP (€/MWh)	-19.99	-20.00	-16.48	-3.93	-11.92	-18.94	-4.19
	↓ -55%	↑ 43%	↔ -2%	↑ 34%	↔ -3%	➔ 0%	↔ 20%
Tot.Vol(GWh)	1.04	1.49	1.46	1.96	1.90	1.90	2.29

Trades by Order Type

Delivery Day		21.02	22.02	23.02	24.02	25.02	26.02	27.02	
Ord Price Type		Sell & Buy Trades in (GWh) per Price Type							(%)
PPT	(S)	0.000	0.000	0.000	0.000	0.000	0.000	0.000	0.00%
HBD	(S)	0.440	0.465	0.230	0.961	0.910	0.839	0.596	52.14%
BLK	(S)	0.000	0.000	0.000	0.000	0.000	0.000	0.000	0.00%
CPL	(S)	0.082	0.280	0.502	0.018	0.039	0.110	0.548	47.86%
PPT	(B)	0.000	0.000	0.000	0.000	0.000	0.000	0.000	0.00%
HBD	(B)	0.439	0.683	0.713	0.469	0.452	0.932	1.050	91.76%
BLK	(B)	0.000	0.000	0.000	0.000	0.000	0.000	0.000	0.00%
CPL	(B)	0.083	0.062	0.018	0.509	0.497	0.018	0.094	8.24%
		Sell & Buy Orders Traded per Price Type							(%)
PPT	(S)	0	0	0	0	0	0	0	0.00%
HBD	(S)	145	109	209	163	149	82	123	100.00%
BLK	(S)	0	0	0	0	0	0	0	0.00%
PPT	(B)	0	0	0	0	0	0	0	0.00%
HBD	(B)	225	269	216	236	136	226	315	100.00%
BLK	(B)	0	0	0	0	0	0	0	0.00%

- MCP** Market Clearing Price (€/MWh)
- PPT** Priority Price-Taking
- HBD** Hybrid
- BLK** Block
- CPL** Market Coupling Flow

Trade's Volume Mix

	Sell - MWh	Buy - MWh	
Lignite (0.0%)	0	0	(0.0%)
Crete Conv. (0.0%)	0	0	(0.0%)
Gas (19.7%)	225	3	(0.2%)
Hydro (0.0%)	0	0	(0.0%)
Imports (47.9%)	548		
RES (15.6%)	179	895	(78.2%)
Crete RES (0.0%)	0	0	(0.0%)
HV Load (0.0%)	0	0	(0.0%)
MV Load (4.0%)	46	58	(5.1%)
LV Load (12.8%)	146	94	(8.2%)
Crete Load (0.0%)	0	0	(0.0%)
Pumping (0.0%)	0	0	(0.0%)
Exports		94	(8.2%)
Sys.Losses (0.0%)	0	0	(0.0%)
D/R Load (0.0%)	0	0	(0.0%)

