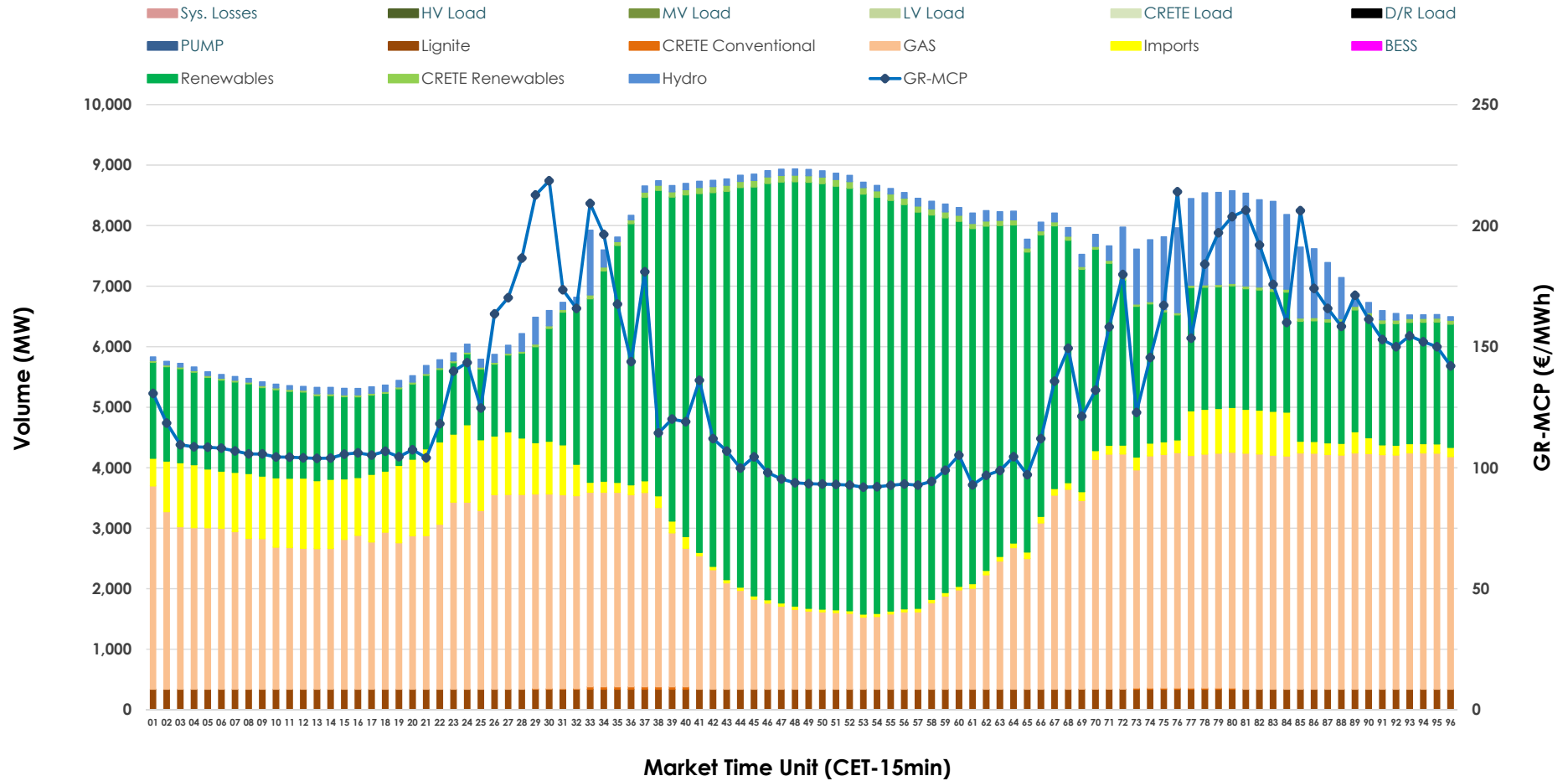


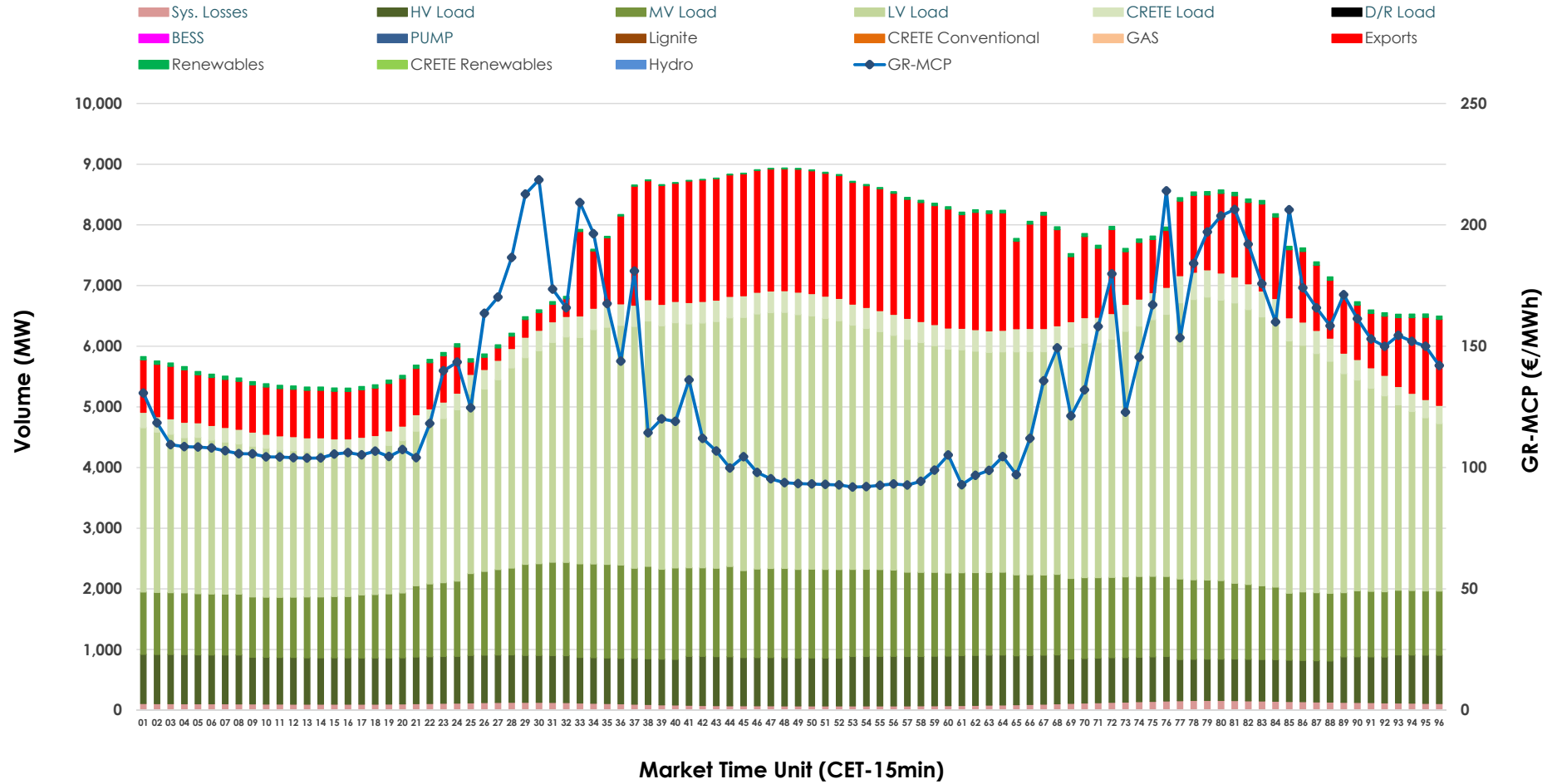


Day-Ahead Market Outlook

31.03.2026 Day-Ahead Market - Sell



31.03.2026 Day-Ahead Market - Buy



GR Bidding Zone Weekly Figures

Delivery Day	25.03	26.03	27.03	28.03	29.03	30.03	31.03
	👇 -28%	👆 6%	👆 14%	👇 -12%	👇 -6%	👆 50%	👆 13%
Avg.MCP (€/MWh)	78.87	83.46	94.87	83.88	78.67	118.01	133.84
Max.MCP (€/MWh)	205.42	175.68	153.06	161.79	159.68	223.00	218.54
Min.MCP (€/MWh)	0.00	0.00	0.01	5.02	0.00	0.02	91.97
	👇 -3%	👇 -3%	👆 6%	👇 -14%	👇 -6%	👆 10%	👆 3%
Tot.Vol(GWh)	376.78	367.18	387.51	331.32	310.02	341.69	350.68

Trades by Order Type

Delivery Day		25.03	26.03	27.03	28.03	29.03	30.03	31.03	
Ord Price Type		Sell & Buy Trades in (GWh) per Price Type							(%)
PPT	(S)	80.498	67.792	78.719	58.210	53.869	52.119	53.482	30.50%
HBD	(S)	77.174	75.969	84.049	62.984	60.502	74.533	74.499	42.49%
BLK	(S)	29.791	31.782	28.633	30.164	21.936	30.517	40.412	23.05%
CPL	(S)	0.928	8.049	2.353	14.305	18.705	13.675	6.945	3.96%
PPT	(B)	13.576	13.255	15.198	13.590	14.311	13.444	14.177	8.09%
HBD	(B)	136.888	146.733	148.574	141.361	124.133	136.551	141.287	80.58%
BLK	(B)	0.000	0.000	0.000	0.000	0.000	0.000	0.000	0.00%
CPL	(B)	37.926	23.605	29.982	10.712	16.567	20.849	19.875	11.34%
		Sell & Buy Orders Traded per Price Type							(%)
PPT	(S)	1726	1755	1770	1745	1557	1546	1555	32.36%
HBD	(S)	2699	2787	2960	3058	2506	3107	3233	67.27%
BLK	(S)	11	11	11	11	11	15	18	0.37%
PPT	(B)	2270	2270	2269	2321	2235	2243	2259	35.91%
HBD	(B)	4359	4150	4176	4177	3949	4044	4031	64.09%
BLK	(B)	0	0	0	0	0	0	0	0.00%

- MCP** Market Clearing Price (€/MWh)
- PPT** Priority Price-Taking
- HBD** Hybrid
- BLK** Block
- CPL** Market Coupling Flow

Trade's Volume Mix

	Sell - MWh	Buy - MWh	
Lignite (4.7%)	8,160	0	(0.0%)
Crete Conv. (0.1%)	130	0	(0.0%)
Gas (38.2%)	66,992	0	(0.0%)
Hydro (4.5%)	7,814	0	(0.0%)
Imports (6.5%)	11,484		
RES (45.2%)	79,326	1,013	(0.6%)
Crete RES (0.8%)	1,432	0	(0.0%)
BESS (0.0%)	0	0	(0.0%)
HV Load (0.0%)	0	18,463	(10.5%)
MV Load (0.0%)	0	30,582	(17.4%)
LV Load (0.0%)	0	84,528	(48.2%)
Crete Load (0.0%)	0	8,096	(4.6%)
Pumping (0.0%)	0	0	(0.0%)
Exports		30,049	(17.1%)
Sys.Losses (0.0%)	0	2,609	(1.5%)
D/R Load (0.0%)	0	0	(0.0%)

