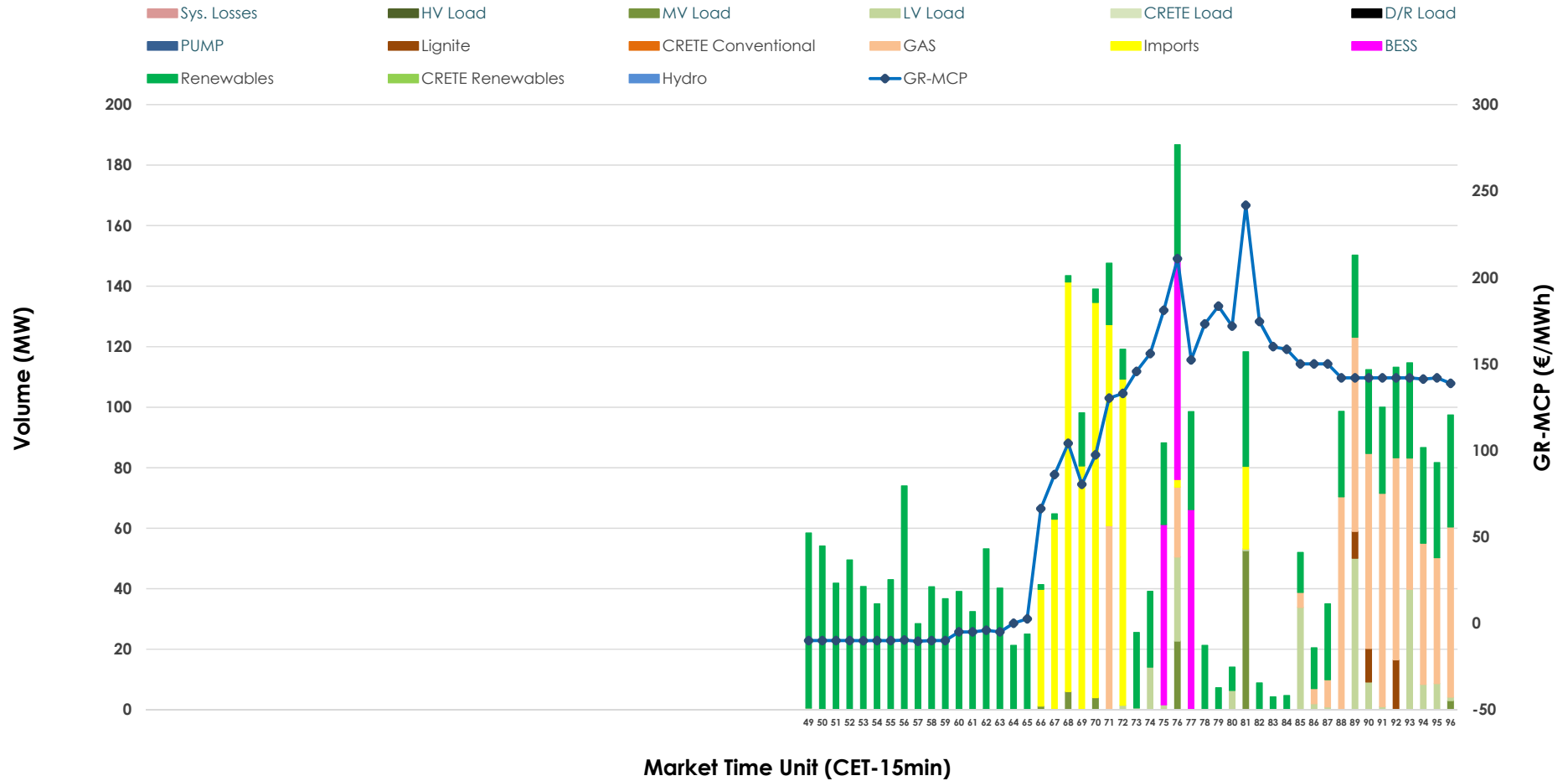


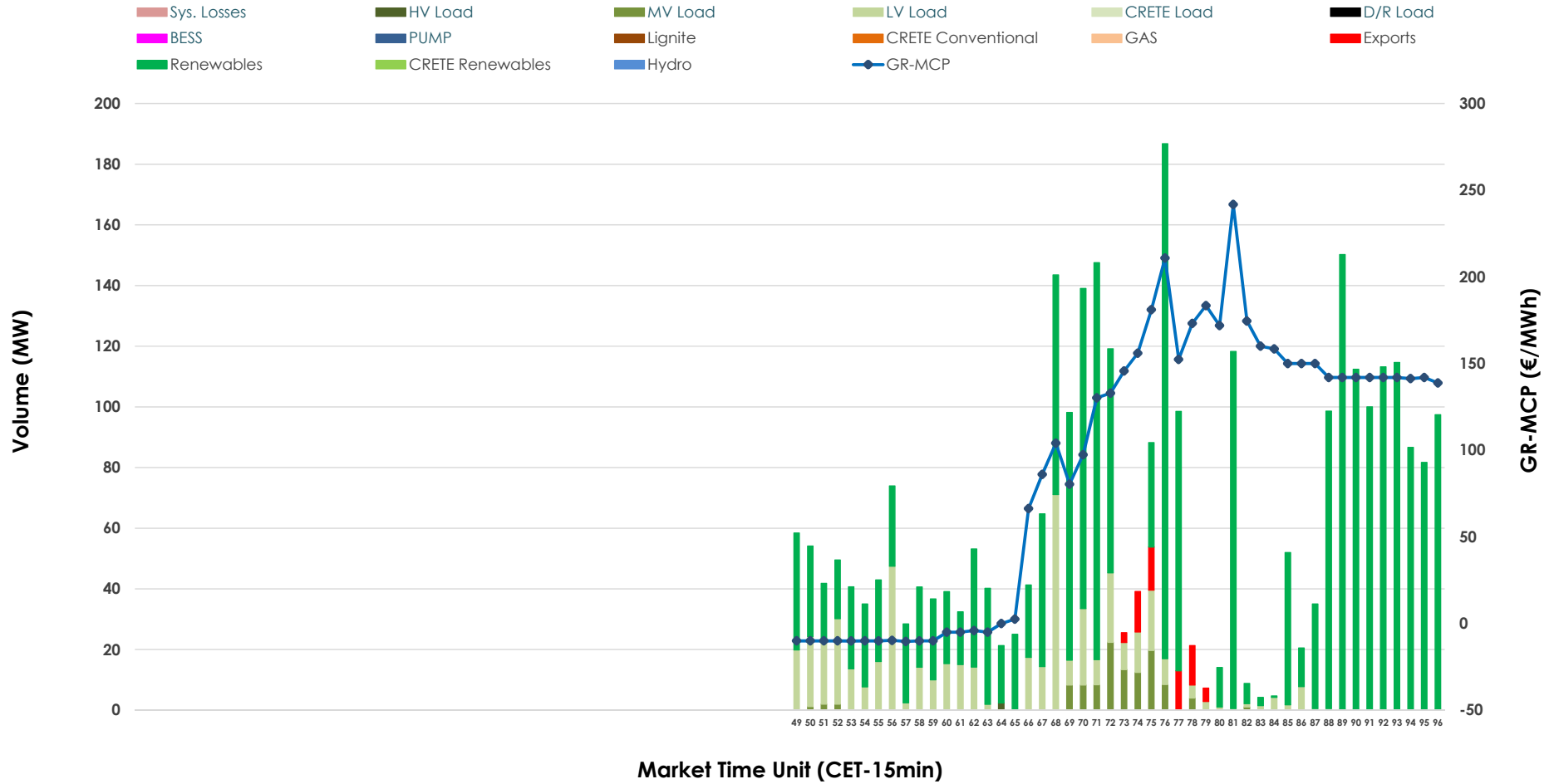


IDA '3' Market Outlook

14.05.2026 IDA '3' Market - Sell



14.05.2026 IDA '3' Market - Buy



GR Bidding Zone Weekly Figures

Delivery Day	08.05	09.05	10.05	11.05	12.05	13.05	14.05
	👇 -3%	👇 -24%	👇 -5%	👆 24%	👇 -36%	👆 44%	👇 -8%
Avg.MCP (€/MWh)	120.81	91.75	87.28	108.59	69.35	99.87	91.74
Max.MCP (€/MWh)	163.91	183.81	163.81	195.45	186.70	193.09	241.73
Min.MCP (€/MWh)	70.07	-5.00	4.99	20.00	0.90	-3.00	-10.36
	👇 -43%	👇 -21%	👆 2%	👆 73%	👆 4%	👇 -1%	👇 -21%
Tot.Vol(GWh)	1.39	1.10	1.13	1.95	2.02	2.00	1.57

Trades by Order Type

Delivery Day		08.05	09.05	10.05	11.05	12.05	13.05	14.05	
Ord Price Type		Sell & Buy Trades in (GWh) per Price Type							(%)
PPT	(S)	0.000	0.000	0.000	0.000	0.000	0.000	0.000	0.00%
HBD	(S)	0.592	0.537	0.502	0.661	1.009	0.965	0.623	79.26%
BLK	(S)	0.000	0.000	0.000	0.000	0.000	0.000	0.000	0.00%
CPL	(S)	0.103	0.013	0.062	0.312	0.000	0.036	0.163	20.74%
PPT	(B)	0.000	0.000	0.000	0.000	0.000	0.000	0.000	0.00%
HBD	(B)	0.466	0.543	0.531	0.736	0.844	0.874	0.771	98.06%
BLK	(B)	0.000	0.000	0.000	0.000	0.000	0.000	0.000	0.00%
CPL	(B)	0.229	0.007	0.033	0.237	0.165	0.127	0.015	1.94%
		Sell & Buy Orders Traded per Price Type							(%)
PPT	(S)	0	0	0	0	0	0	0	0.00%
HBD	(S)	164	105	204	203	185	254	164	100.00%
BLK	(S)	0	0	0	0	0	0	0	0.00%
PPT	(B)	0	0	0	0	0	0	0	0.00%
HBD	(B)	198	261	169	135	115	183	112	100.00%
BLK	(B)	0	0	0	0	0	0	0	0.00%

- MCP** Market Clearing Price (€/MWh)
- PPT** Priority Price-Taking
- HBD** Hybrid
- BLK** Block
- CPL** Market Coupling Flow

Trade's Volume Mix

	Sell - MWh	Buy - MWh	
Lignite (1.2%)	9	0	(0.0%)
Crete Conv. (0.0%)	0	0	(0.0%)
Gas (19.9%)	157	0	(0.0%)
Hydro (0.0%)	0	0	(0.0%)
Imports (20.7%)	163		
RES (42.3%)	333	618	(78.6%)
Crete RES (0.0%)	0	0	(0.0%)
BESS (6.3%)	49	0	(0.0%)
HV Load (0.0%)	0	1	(0.1%)
MV Load (2.8%)	22	28	(3.6%)
LV Load (6.7%)	53	124	(15.8%)
Crete Load (0.0%)	0	0	(0.0%)
Pumping (0.0%)	0	0	(0.0%)
Exports		15	(1.9%)
Sys.Losses (0.0%)	0	0	(0.0%)
D/R Load (0.0%)	0	0	(0.0%)

