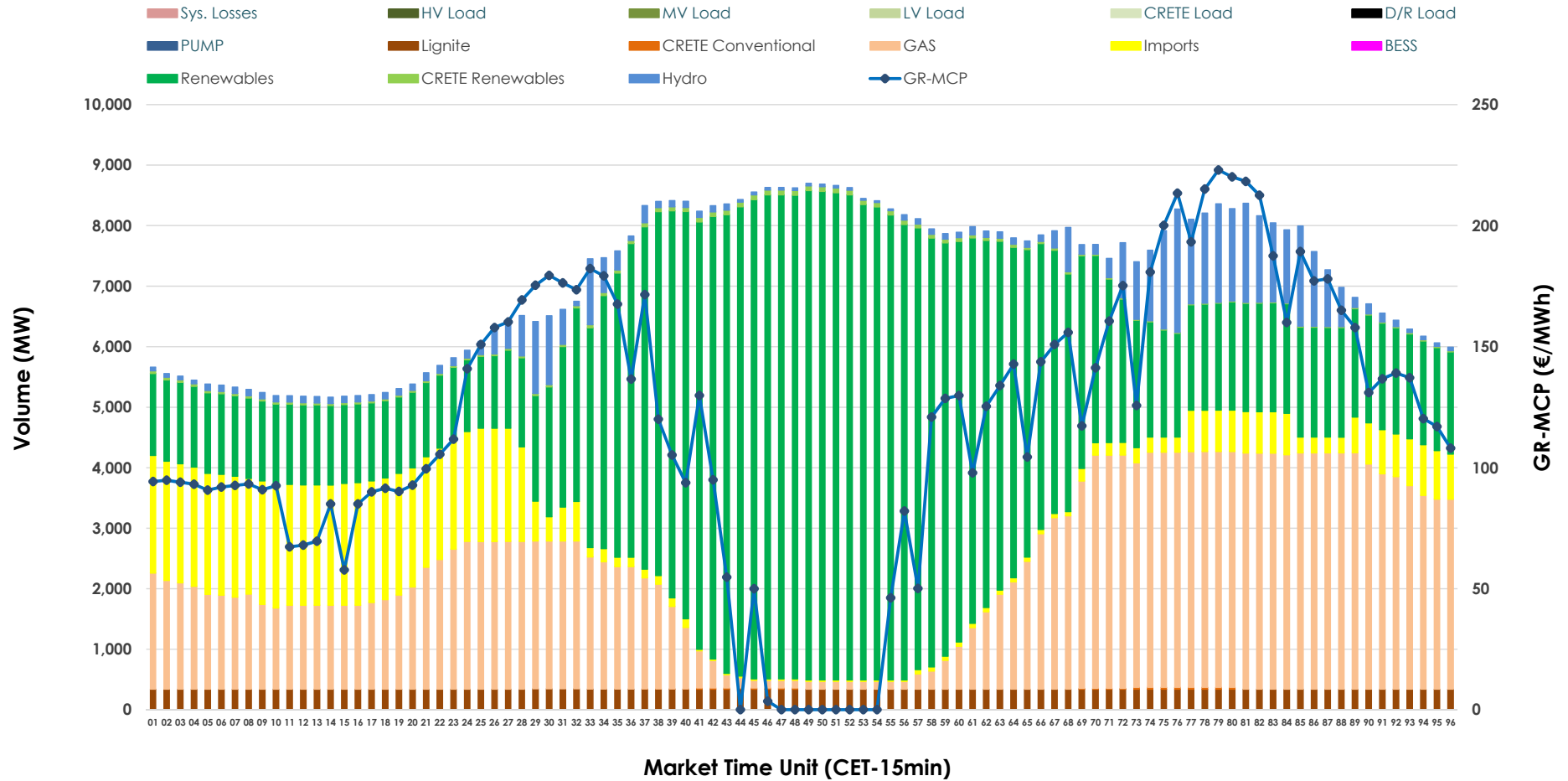


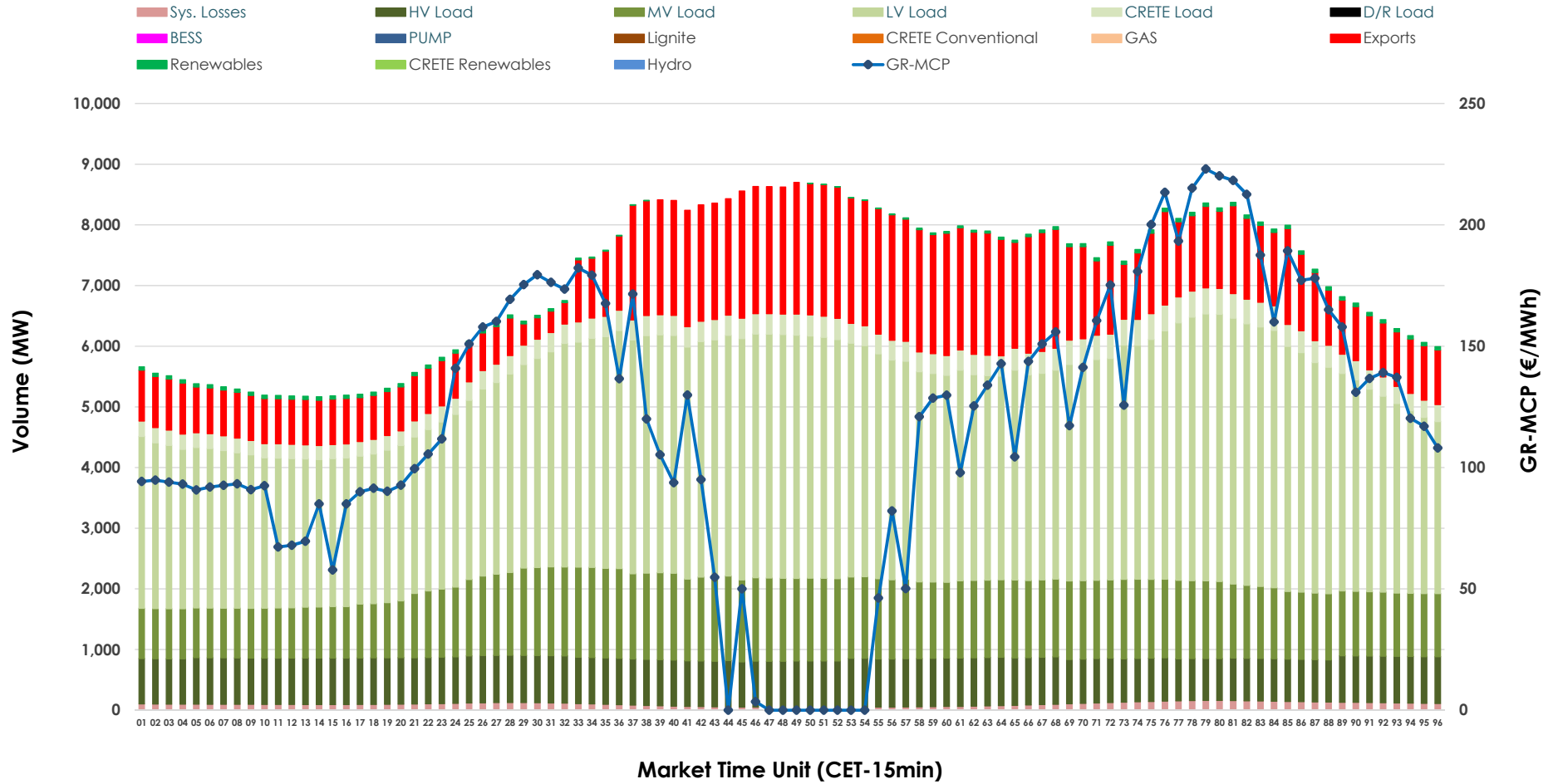


Day-Ahead Market Outlook

30.03.2026 Day-Ahead Market - Sell



30.03.2026 Day-Ahead Market - Buy



GR Bidding Zone Weekly Figures

Delivery Day	24.03	25.03	26.03	27.03	28.03	29.03	30.03
	👇 -26%	👇 -28%	👆 6%	👆 14%	👇 -12%	👇 -6%	👆 50%
Avg.MCP (€/MWh)	109.02	78.87	83.46	94.87	83.88	78.67	118.01
Max.MCP (€/MWh)	198.53	205.42	175.68	153.06	161.79	159.68	223.00
Min.MCP (€/MWh)	8.47	0.00	0.00	0.01	5.02	0.00	0.02
	👇 -1%	👇 -3%	👇 -3%	👆 6%	👇 -14%	👇 -6%	👆 10%
Tot.Vol(GWh)	389.09	376.78	367.18	387.51	331.32	310.02	341.69

Trades by Order Type

Delivery Day		24.03	25.03	26.03	27.03	28.03	29.03	30.03	
Ord Price Type		Sell & Buy Trades in (GWh) per Price Type							(%)
PPT	(S)	83.245	80.498	67.792	78.719	58.210	53.869	52.119	30.51%
HBD	(S)	76.867	77.174	75.969	84.049	62.984	60.502	74.533	43.63%
BLK	(S)	30.410	29.791	31.782	28.633	30.164	21.936	30.517	17.86%
CPL	(S)	4.021	0.928	8.049	2.353	14.305	18.705	13.675	8.00%
PPT	(B)	14.986	13.576	13.255	15.198	13.590	14.311	13.444	7.87%
HBD	(B)	153.909	136.888	146.733	148.574	141.361	124.133	136.551	79.93%
BLK	(B)	0.000	0.000	0.000	0.000	0.000	0.000	0.000	0.00%
CPL	(B)	25.648	37.926	23.605	29.982	10.712	16.567	20.849	12.20%
		Sell & Buy Orders Traded per Price Type							(%)
PPT	(S)	1849	1726	1755	1770	1745	1557	1546	33.12%
HBD	(S)	3103	2699	2787	2960	3058	2506	3107	66.56%
BLK	(S)	10	11	11	11	11	11	15	0.32%
PPT	(B)	2234	2270	2270	2269	2321	2235	2243	35.68%
HBD	(B)	4147	4359	4150	4176	4177	3949	4044	64.32%
BLK	(B)	0	0	0	0	0	0	0	0.00%

- MCP** Market Clearing Price (€/MWh)
- PPT** Priority Price-Taking
- HBD** Hybrid
- BLK** Block
- CPL** Market Coupling Flow

Trade's Volume Mix

		Sell - MWh	Buy - MWh	
Lignite	(4.8%)	8,168	0	(0.0%)
Crete Conv.	(0.1%)	110	0	(0.0%)
Gas	(29.1%)	49,699	0	(0.0%)
Hydro	(5.4%)	9,228	0	(0.0%)
Imports	(10.7%)	18,327		
RES	(49.4%)	84,341	925	(0.5%)
Crete RES	(0.6%)	971	0	(0.0%)
BESS	(0.0%)	0	0	(0.0%)
HV Load	(0.0%)	0	18,175	(10.6%)
MV Load	(0.0%)	0	28,547	(16.7%)
LV Load	(0.0%)	0	82,173	(48.1%)
Crete Load	(0.0%)	0	7,748	(4.5%)
Pumping	(0.0%)	0	0	(0.0%)
Exports			30,872	(18.1%)
Sys.Losses	(0.0%)	0	2,404	(1.4%)
D/R Load	(0.0%)	0	0	(0.0%)

