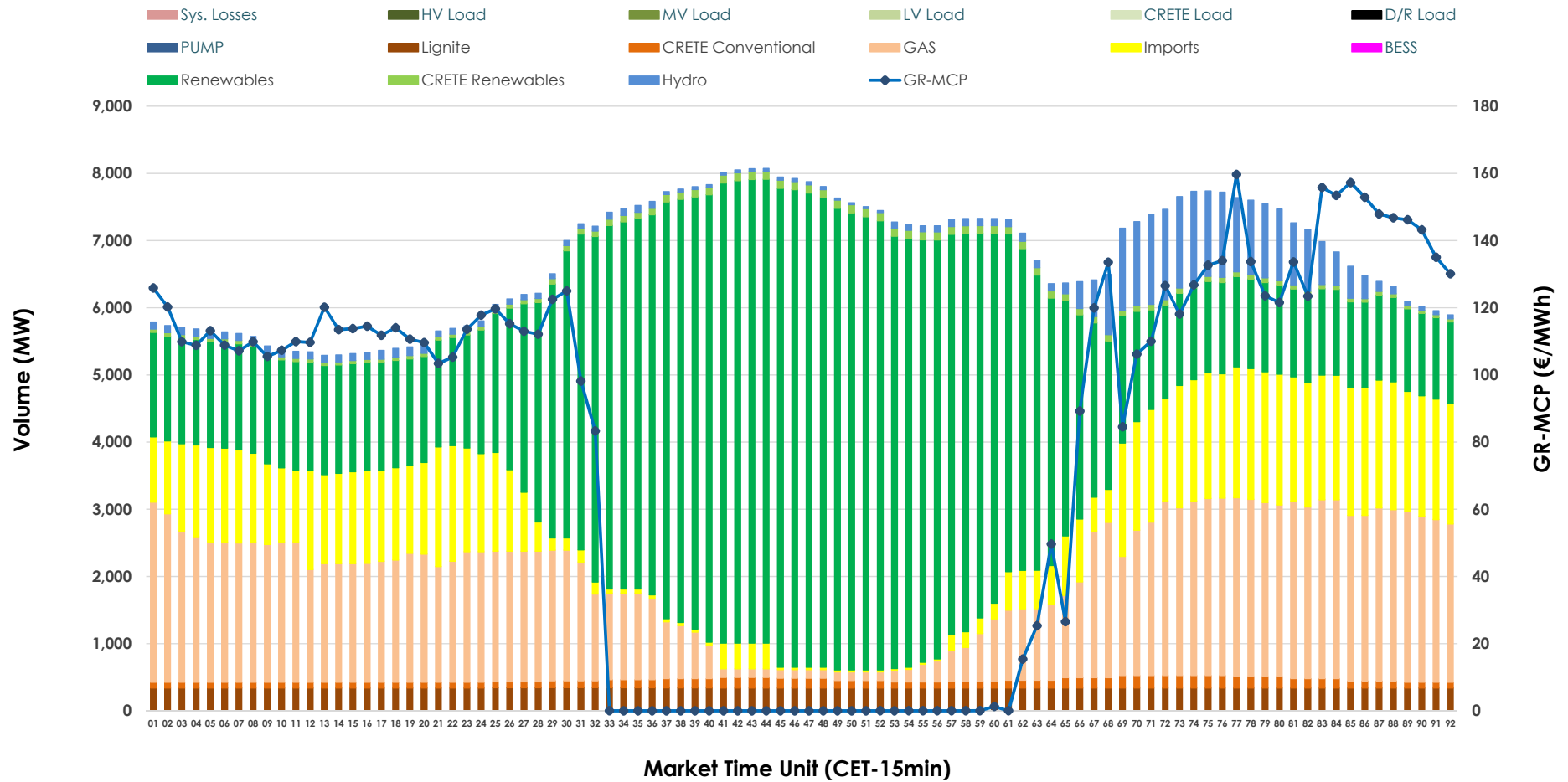


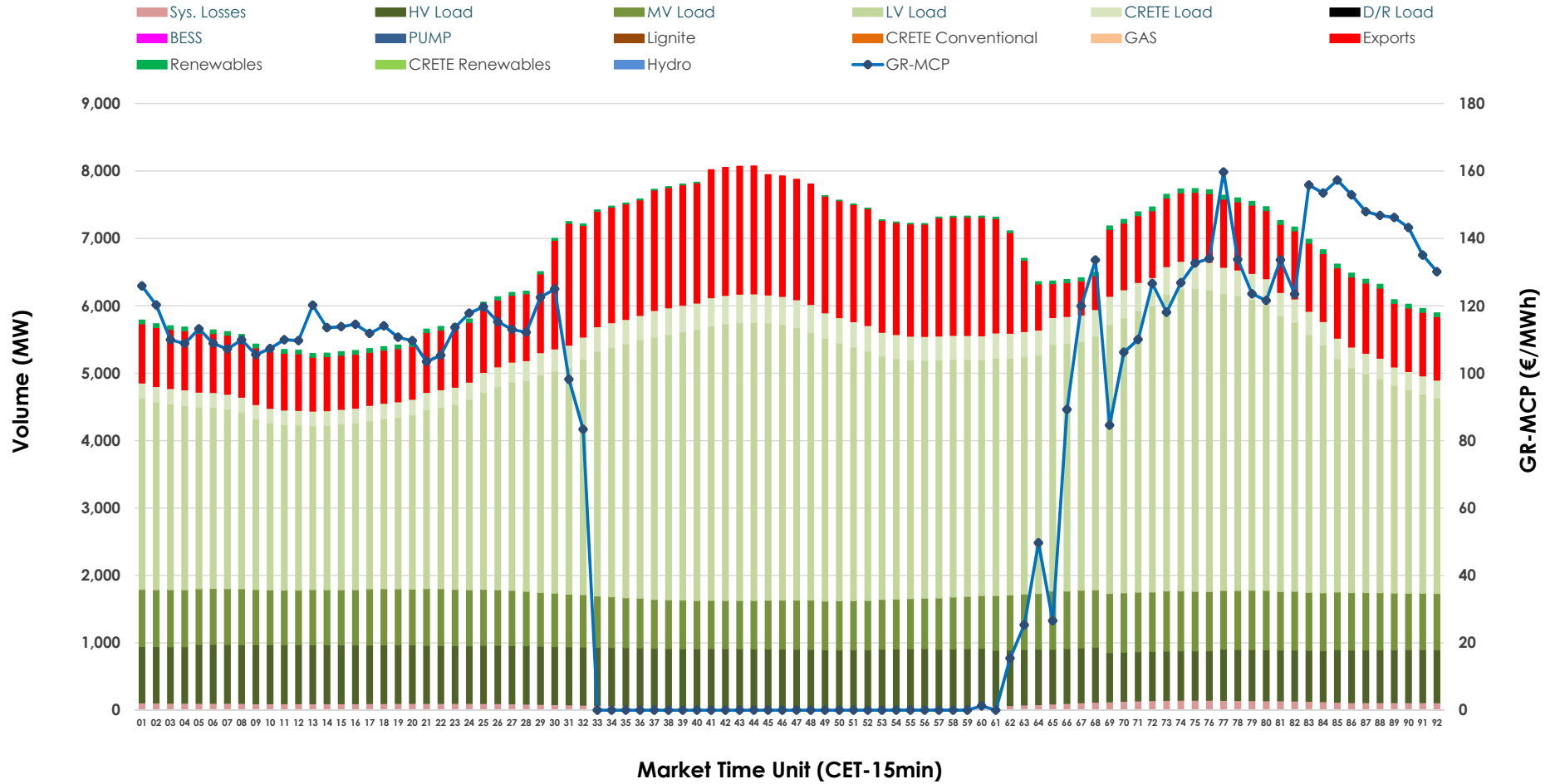


Day-Ahead Market Outlook

29.03.2026 Day-Ahead Market - Sell



29.03.2026 Day-Ahead Market - Buy



GR Bidding Zone Weekly Figures

Delivery Day	23.03	24.03	25.03	26.03	27.03	28.03	29.03
	↑ 74%	↓ -26%	↓ -28%	↑ 6%	↑ 14%	↓ -12%	↓ -6%
Avg.MCP (€/MWh)	147.74	109.02	78.87	83.46	94.87	83.88	78.67
Max.MCP (€/MWh)	281.69	198.53	205.42	175.68	153.06	161.79	159.68
Min.MCP (€/MWh)	63.72	8.47	0.00	0.00	0.01	5.02	0.00
	↑ 9%	↓ -1%	↓ -3%	↓ -3%	↑ 6%	↓ -14%	↓ -6%
Tot.Vol(GWh)	394.91	389.09	376.78	367.18	387.51	331.32	310.02

Trades by Order Type

Delivery Day		23.03	24.03	25.03	26.03	27.03	28.03	29.03	
Ord Price Type		Sell & Buy Trades in (GWh) per Price Type							(%)
PPT	(S)	77.542	83.245	80.498	67.792	78.719	58.210	53.869	34.75%
HBD	(S)	71.298	76.867	77.174	75.969	84.049	62.984	60.502	39.03%
BLK	(S)	46.688	30.410	29.791	31.782	28.633	30.164	21.936	14.15%
CPL	(S)	1.928	4.021	0.928	8.049	2.353	14.305	18.705	12.07%
PPT	(B)	14.391	14.986	13.576	13.255	15.198	13.590	14.311	9.23%
HBD	(B)	147.269	153.909	136.888	146.733	148.574	141.361	124.133	80.08%
BLK	(B)	0.000	0.000	0.000	0.000	0.000	0.000	0.000	0.00%
CPL	(B)	35.796	25.648	37.926	23.605	29.982	10.712	16.567	10.69%
		Sell & Buy Orders Traded per Price Type							(%)
PPT	(S)	1886	1849	1726	1755	1770	1745	1557	38.22%
HBD	(S)	3216	3103	2699	2787	2960	3058	2506	61.51%
BLK	(S)	25	10	11	11	11	11	11	0.27%
PPT	(B)	2231	2234	2270	2270	2269	2321	2235	36.14%
HBD	(B)	4048	4147	4359	4150	4176	4177	3949	63.86%
BLK	(B)	0	0	0	0	0	0	0	0.00%

- MCP** Market Clearing Price (€/MWh)
- PPT** Priority Price-Taking
- HBD** Hybrid
- BLK** Block
- CPL** Market Coupling Flow

Trade's Volume Mix

	Sell - MWh	Buy - MWh	
Lignite (5.1%)	7,834	0	(0.0%)
Crete Conv. (1.7%)	2,673	0	(0.0%)
Gas (23.7%)	36,745	0	(0.0%)
Hydro (4.3%)	6,624	0	(0.0%)
Imports (14.4%)	22,349		
RES (49.7%)	76,966	840	(0.5%)
Crete RES (1.2%)	1,821	0	(0.0%)
BESS (0.0%)	0	0	(0.0%)
HV Load (0.0%)	0	19,077	(12.3%)
MV Load (0.0%)	0	18,644	(12.0%)
LV Load (0.0%)	0	79,033	(51.0%)
Crete Load (0.0%)	0	7,599	(4.9%)
Pumping (0.0%)	0	0	(0.0%)
Exports		27,687	(17.9%)
Sys.Losses (0.0%)	0	2,132	(1.4%)
D/R Load (0.0%)	0	0	(0.0%)

