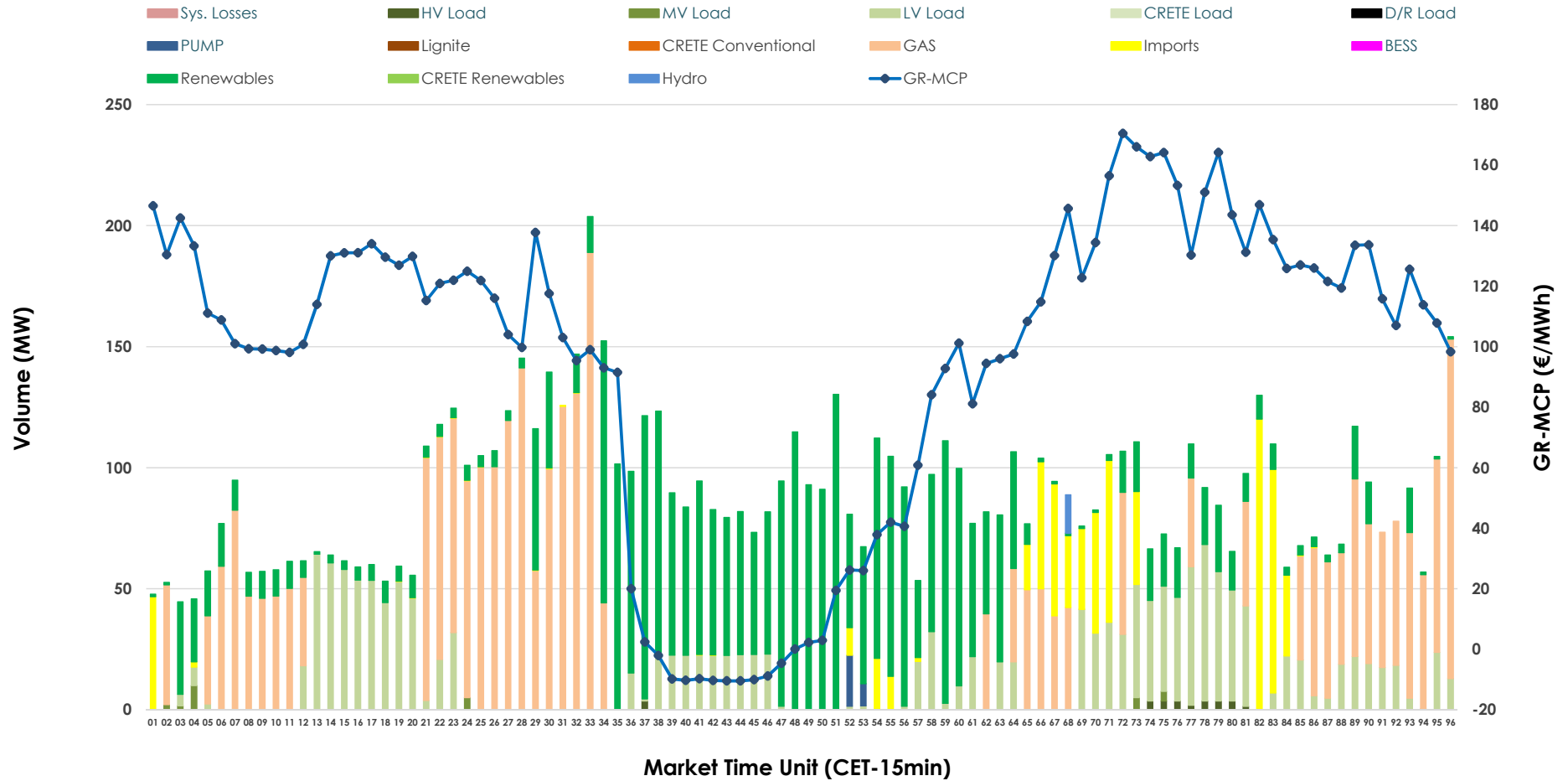


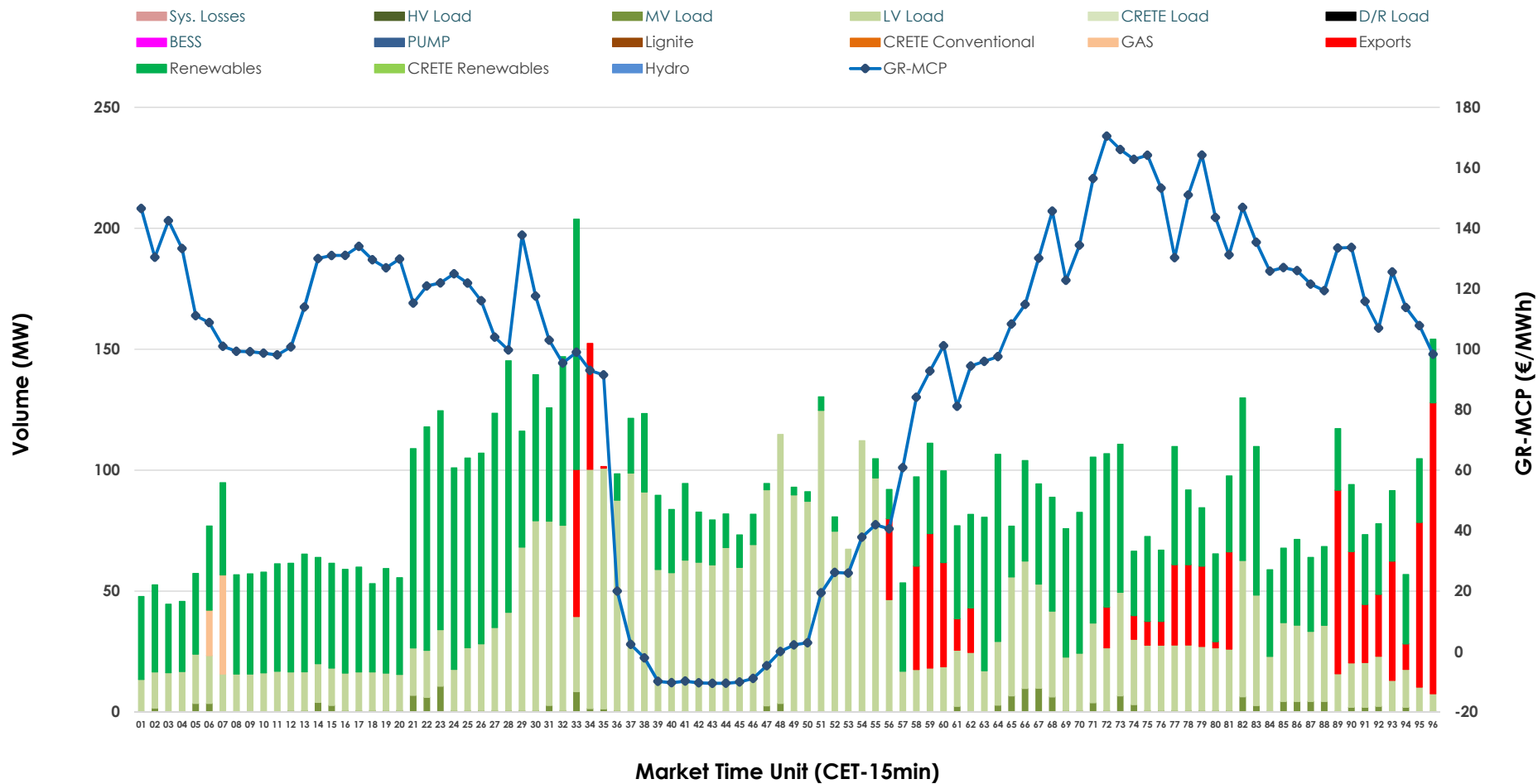


IDA '2' Market Outlook

21.03.2026 IDA '2' Market - Sell



21.03.2026 IDA '2' Market - Buy



GR Bidding Zone Weekly Figures

Delivery Day	15.03	16.03	17.03	18.03	19.03	20.03	21.03
	👇 -6%	👆 34%	👉 11%	👇 -31%	👉 17%	👉 18%	👇 -14%
Avg.MCP (€/MWh)	78.46	104.89	116.34	80.64	94.68	111.38	95.69
Max.MCP (€/MWh)	172.20	197.06	193.25	148.43	211.38	245.73	170.48
Min.MCP (€/MWh)	-21.83	28.53	60.40	-10.62	5.30	33.00	-10.46
	👉 30%	👇 -17%	👇 -27%	👉 2%	👇 -9%	👉 22%	👉 2%
Tot.Vol(GWh)	6.22	5.17	3.75	3.81	3.46	4.24	4.32

Trades by Order Type

Delivery Day		15.03	16.03	17.03	18.03	19.03	20.03	21.03	
Ord Price Type		Sell & Buy Trades in (GWh) per Price Type							(%)
PPT	(S)	0.000	0.000	0.000	0.000	0.000	0.000	0.000	0.00%
HBD	(S)	1.893	1.823	1.679	0.962	1.678	1.422	1.990	92.01%
BLK	(S)	0.000	0.000	0.000	0.000	0.000	0.000	0.000	0.00%
CPL	(S)	1.216	0.761	0.194	0.942	0.054	0.696	0.173	7.99%
PPT	(B)	0.000	0.000	0.000	0.000	0.000	0.000	0.000	0.00%
HBD	(B)	2.551	1.583	1.440	1.798	0.974	1.907	1.930	89.27%
BLK	(B)	0.000	0.000	0.000	0.000	0.000	0.000	0.000	0.00%
CPL	(B)	0.559	1.001	0.434	0.106	0.758	0.211	0.232	10.73%
		Sell & Buy Orders Traded per Price Type							(%)
PPT	(S)	0	0	0	0	0	0	0	0.00%
HBD	(S)	292	391	427	207	324	245	212	100.00%
BLK	(S)	0	0	0	0	0	0	0	0.00%
PPT	(B)	0	0	0	0	0	0	0	0.00%
HBD	(B)	577	341	584	550	435	473	670	100.00%
BLK	(B)	0	0	0	0	0	0	0	0.00%

- MCP** Market Clearing Price (€/MWh)
- PPT** Priority Price-Taking
- HBD** Hybrid
- BLK** Block
- CPL** Market Coupling Flow

Trade's Volume Mix

		Sell - MWh	Buy - MWh	
Lignite	(0.0%)	0	0	(0.0%)
Crete Conv.	(0.0%)	0	0	(0.0%)
Gas	(36.2%)	782	15	(0.7%)
Hydro	(0.2%)	4	0	(0.0%)
Imports	(8.0%)	173		
RES	(35.6%)	769	922	(42.6%)
Crete RES	(0.0%)	0	0	(0.0%)
BESS	(0.0%)	0	0	(0.0%)
HV Load	(0.3%)	7	0	(0.0%)
MV Load	(0.3%)	7	44	(2.0%)
LV Load	(19.1%)	413	949	(43.9%)
Crete Load	(0.0%)	0	0	(0.0%)
Pumping	(0.3%)	8	0	(0.0%)
Exports			232	(10.7%)
Sys.Losses	(0.0%)	0	0	(0.0%)
D/R Load	(0.0%)	0	0	(0.0%)

