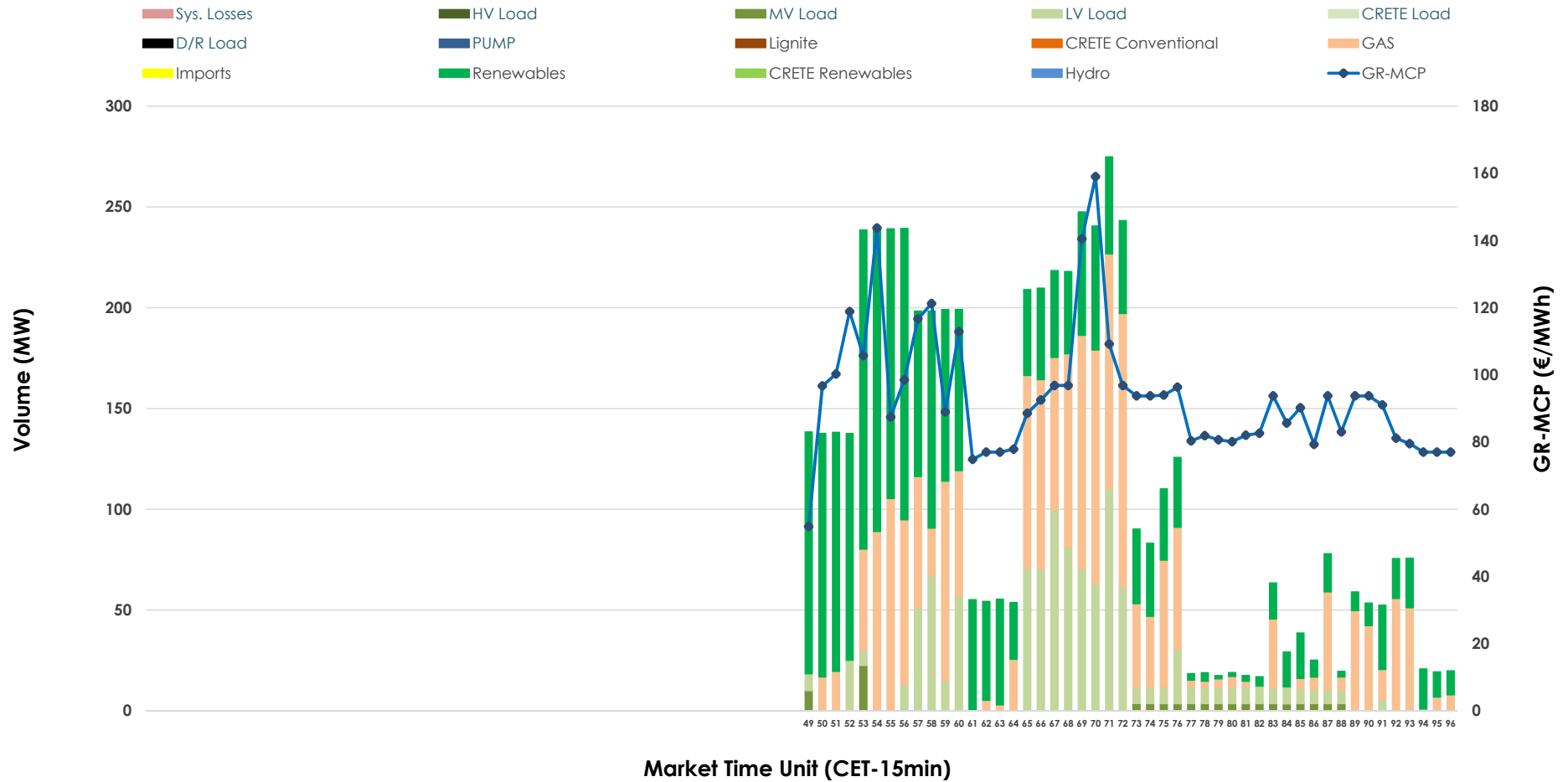


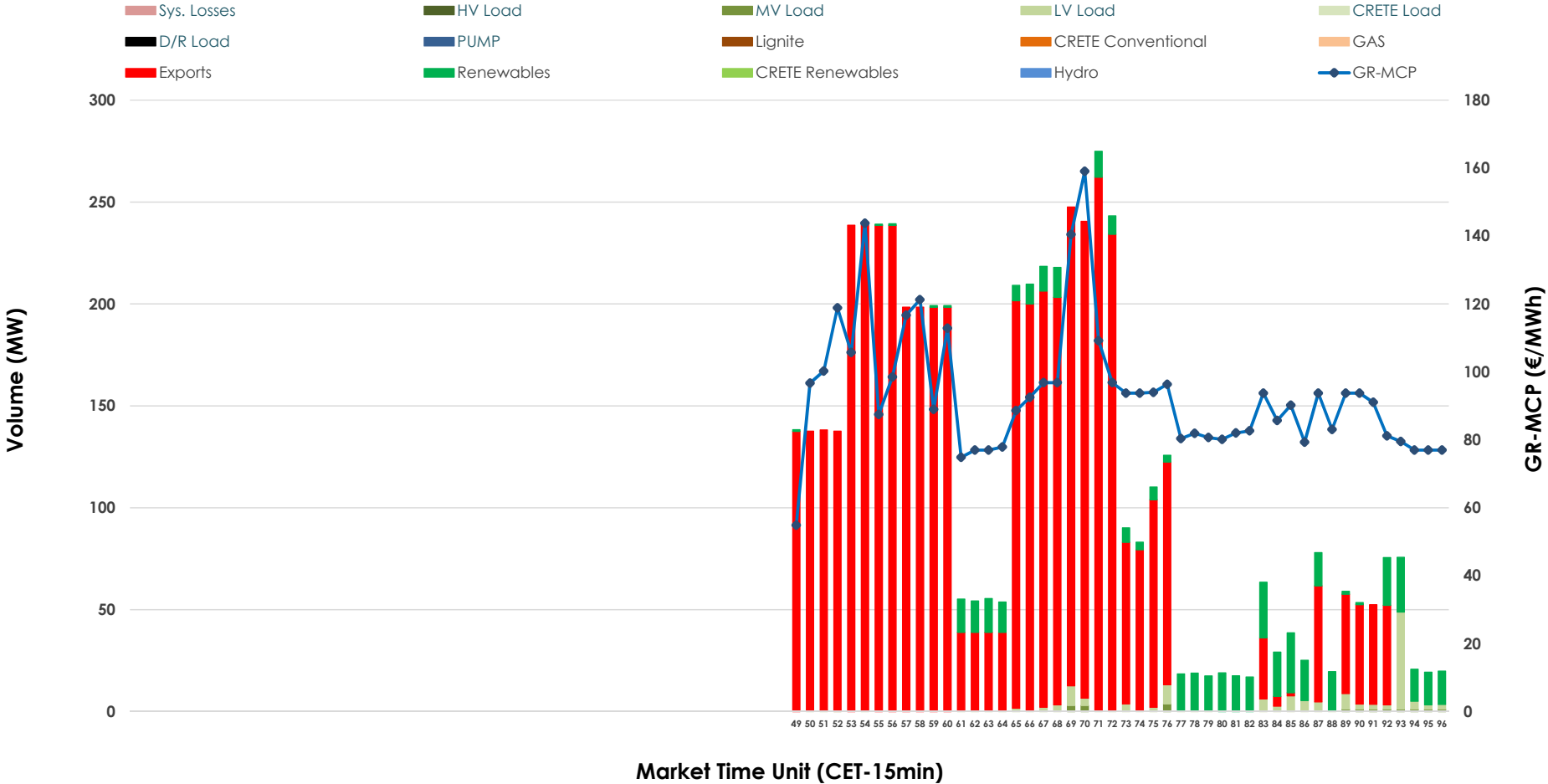


# IDA '3' Market Outlook

06.01.2026 IDA '3' Market - Sell



### 06.01.2026 IDA '3' Market - Buy



### GR Bidding Zone Weekly Figures

Delivery Day	31.12	01.01	02.01	03.01	04.01	05.01	06.01
	↗ 32%	↘ -36%	↗ 19%	↘ -4%	↘ -5%	↗ 38%	↘ -25%
<b>Avg.MCP (€/MWh)</b>	129.63	83.47	99.14	95.35	90.50	125.21	93.64
<b>Max.MCP (€/MWh)</b>	221.33	117.41	124.90	125.00	125.96	223.41	159.04
<b>Min.MCP (€/MWh)</b>	81.04	33.48	23.25	66.82	43.20	87.77	54.86
	↗ 33%	↘ -54%	↗ 36%	↘ -12%	↗ 29%	↘ -29%	↗ 78%
<b>Tot.Vol(GWh)</b>	3.06	1.41	1.92	1.69	2.18	1.55	2.77

### Trades by Order Type

Delivery Day		31.12	01.01	02.01	03.01	04.01	05.01	06.01	
Ord Price Type		Sell & Buy Trades in (GWh) per Price Type							(%)
PPT	(S)	0.000	0.000	0.000	0.000	0.000	0.000	0.000	0.00%
HBD	(S)	0.780	0.615	0.420	0.819	0.655	0.698	1.383	100.00%
BLK	(S)	0.000	0.000	0.000	0.000	0.000	0.000	0.000	0.00%
CPL	(S)	0.749	0.089	0.539	0.026	0.436	0.078	0.000	0.00%
PPT	(B)	0.000	0.000	0.000	0.000	0.000	0.000	0.000	0.00%
HBD	(B)	1.459	0.150	0.242	0.495	0.921	0.215	0.163	11.77%
BLK	(B)	0.000	0.000	0.000	0.000	0.000	0.000	0.000	0.00%
CPL	(B)	0.070	0.555	0.716	0.350	0.170	0.562	1.220	88.23%
		Sell & Buy Orders Traded per Price Type							(%)
PPT	(S)	0	0	0	0	0	0	0	0.00%
HBD	(S)	181	138	203	241	129	193	199	100.00%
BLK	(S)	0	0	0	0	0	0	0	0.00%
PPT	(B)	0	0	0	0	0	0	0	0.00%
HBD	(B)	279	129	203	188	230	91	116	100.00%
BLK	(B)	0	0	0	0	0	0	0	0.00%

**MCP** Market Clearing Price (€/MWh)  
**PPT** Priority Price-Taking  
**HBD** Hybrid  
**BLK** Block  
**CPL** Market Coupling Flow

### Trade's Volume Mix

	Sell - MWh	Buy - MWh	
Lignite (0.0%)	0	0	(0.0%)
Crete Conv. (0.0%)	0	0	(0.0%)
Gas (36.9%)	510	0	(0.0%)
Hydro (0.0%)	0	0	(0.0%)
Imports (0.0%)	0		
RES (43.0%)	595	124	(8.9%)
Crete RES (0.0%)	0	0	(0.0%)
HV Load (0.0%)	0	0	(0.0%)
MV Load (1.6%)	22	5	(0.4%)
LV Load (18.5%)	255	34	(2.5%)
Crete Load (0.0%)	0	0	(0.0%)
Pumping (0.0%)	0	0	(0.0%)
Exports		1,220	(88.2%)
Sys.Losses (0.0%)	0	0	(0.0%)
D/R Load (0.0%)	0	0	(0.0%)

