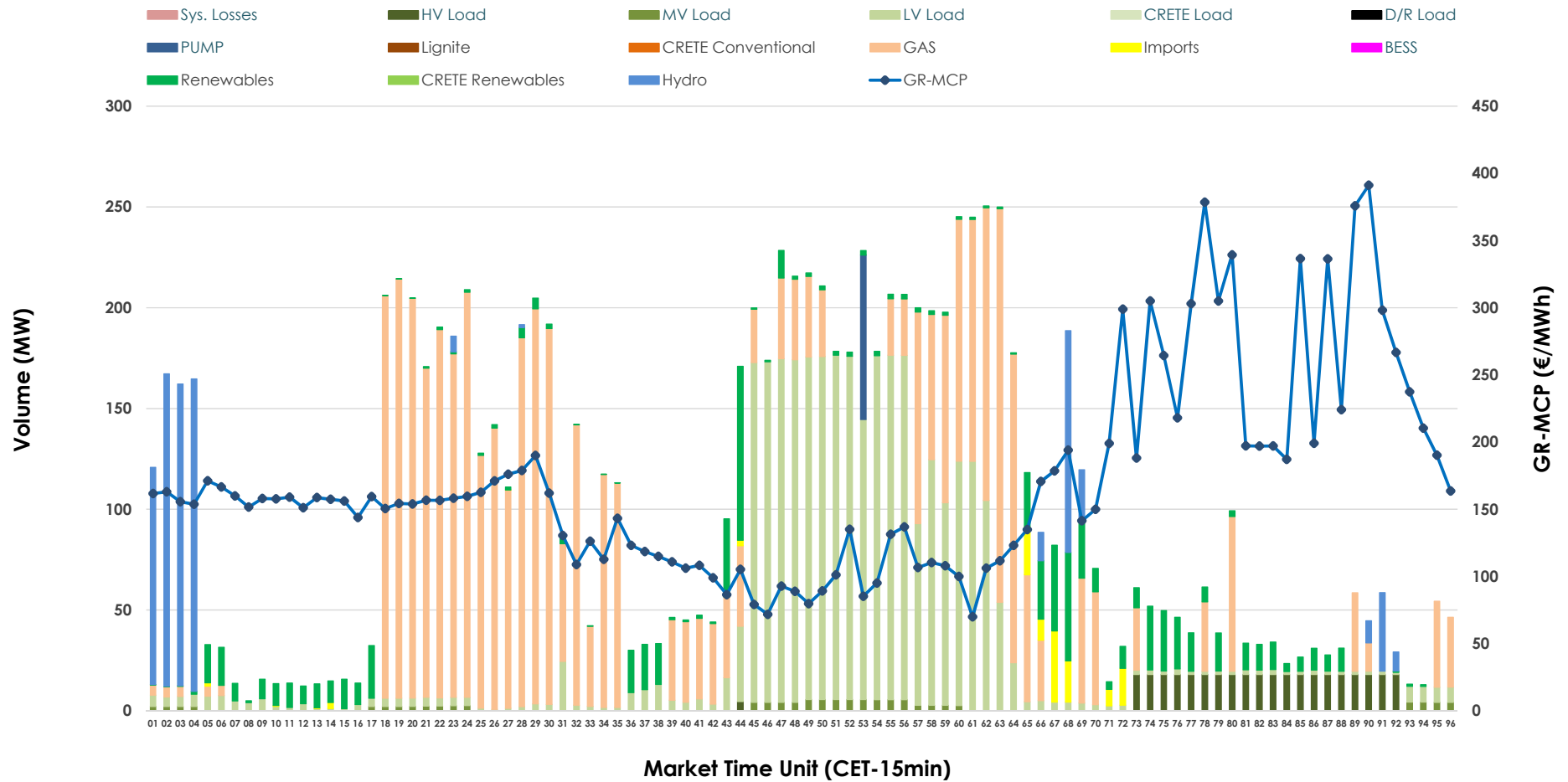


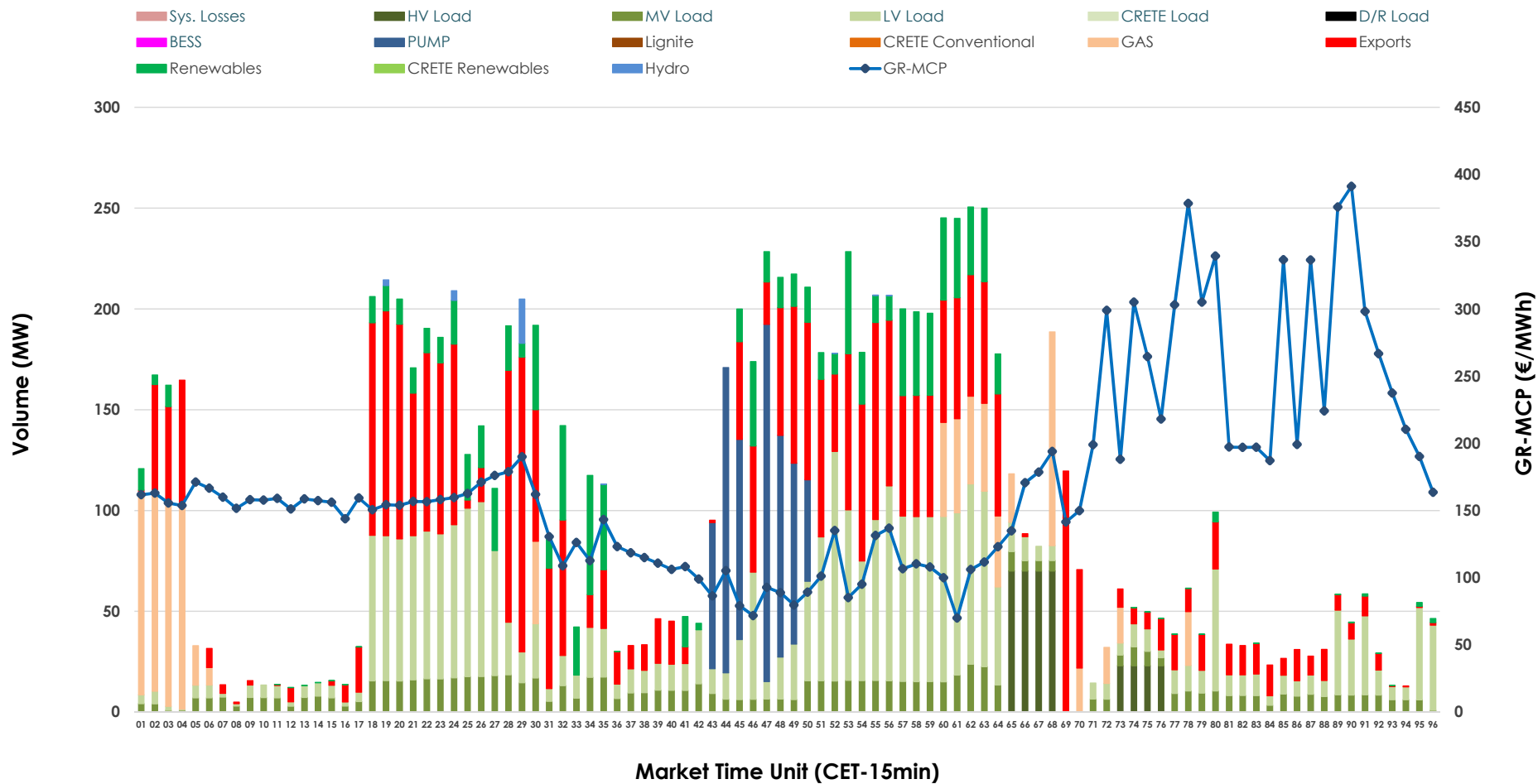


IDA '1' Market Outlook

01.07.2026 IDA '1' Market - Sell



01.07.2026 IDA '1' Market - Buy



GR Bidding Zone Weekly Figures

Delivery Day	25.06	26.06	27.06	28.06	29.06	30.06	01.07
	👇 -17%	👇 -28%	👇 -8%	👇 -8%	👆 25%	👆 57%	👆 19%
Avg.MCP (€/MWh)	118.51	85.06	77.88	72.03	90.14	141.44	168.85
Max.MCP (€/MWh)	253.14	179.07	169.60	153.50	280.03	533.79	391.22
Min.MCP (€/MWh)	12.83	-10.01	-5.79	-3.92	-6.62	-7.05	69.99
	👆 35%	➡ 1%	👇 -58%	👆 106%	👇 -27%	👆 47%	👇 -10%
Tot.Vol(GWh)	6.00	6.04	2.55	5.24	3.81	5.61	5.07

Trades by Order Type

Delivery Day		25.06	26.06	27.06	28.06	29.06	30.06	01.07	
Ord Price Type		Sell & Buy Trades in (GWh) per Price Type							(%)
PPT	(S)	0.000	0.000	0.000	0.000	0.000	0.000	0.000	0.00%
HBD	(S)	2.810	2.829	1.036	1.770	1.804	2.790	2.505	98.77%
BLK	(S)	0.000	0.000	0.000	0.000	0.000	0.000	0.000	0.00%
CPL	(S)	0.190	0.189	0.238	0.850	0.102	0.016	0.031	1.23%
PPT	(B)	0.000	0.000	0.000	0.000	0.000	0.000	0.000	0.00%
HBD	(B)	1.442	1.613	1.053	1.728	1.323	1.229	1.733	68.34%
BLK	(B)	0.000	0.000	0.000	0.000	0.000	0.000	0.000	0.00%
CPL	(B)	1.558	1.405	0.222	0.892	0.582	1.577	0.803	31.66%
		Sell & Buy Orders Traded per Price Type							(%)
PPT	(S)	0	0	0	0	0	0	0	0.00%
HBD	(S)	444	590	332	382	538	567	391	100.00%
BLK	(S)	0	0	0	0	0	0	0	0.00%
PPT	(B)	0	0	0	0	0	0	0	0.00%
HBD	(B)	589	478	502	522	479	300	563	100.00%
BLK	(B)	0	0	0	0	0	0	0	0.00%

- MCP** Market Clearing Price (€/MWh)
- PPT** Priority Price-Taking
- HBD** Hybrid
- BLK** Block
- CPL** Market Coupling Flow

Trade's Volume Mix

	Sell - MWh	Buy - MWh	
Lignite (0.0%)	0	0	(0.0%)
Crete Conv. (0.0%)	0	0	(0.0%)
Gas (46.5%)	1,179	225	(8.9%)
Hydro (7.7%)	196	7	(0.3%)
Imports (1.2%)	31		
RES (8.5%)	215	256	(10.1%)
Crete RES (0.0%)	0	0	(0.0%)
BESS (0.0%)	0	0	(0.0%)
HV Load (3.6%)	91	93	(3.7%)
MV Load (1.1%)	29	238	(9.4%)
LV Load (30.5%)	774	726	(28.6%)
Crete Load (0.0%)	0	0	(0.0%)
Pumping (0.8%)	20	188	(7.4%)
Exports		803	(31.7%)
Sys.Losses (0.0%)	0	0	(0.0%)
D/R Load (0.0%)	0	0	(0.0%)

