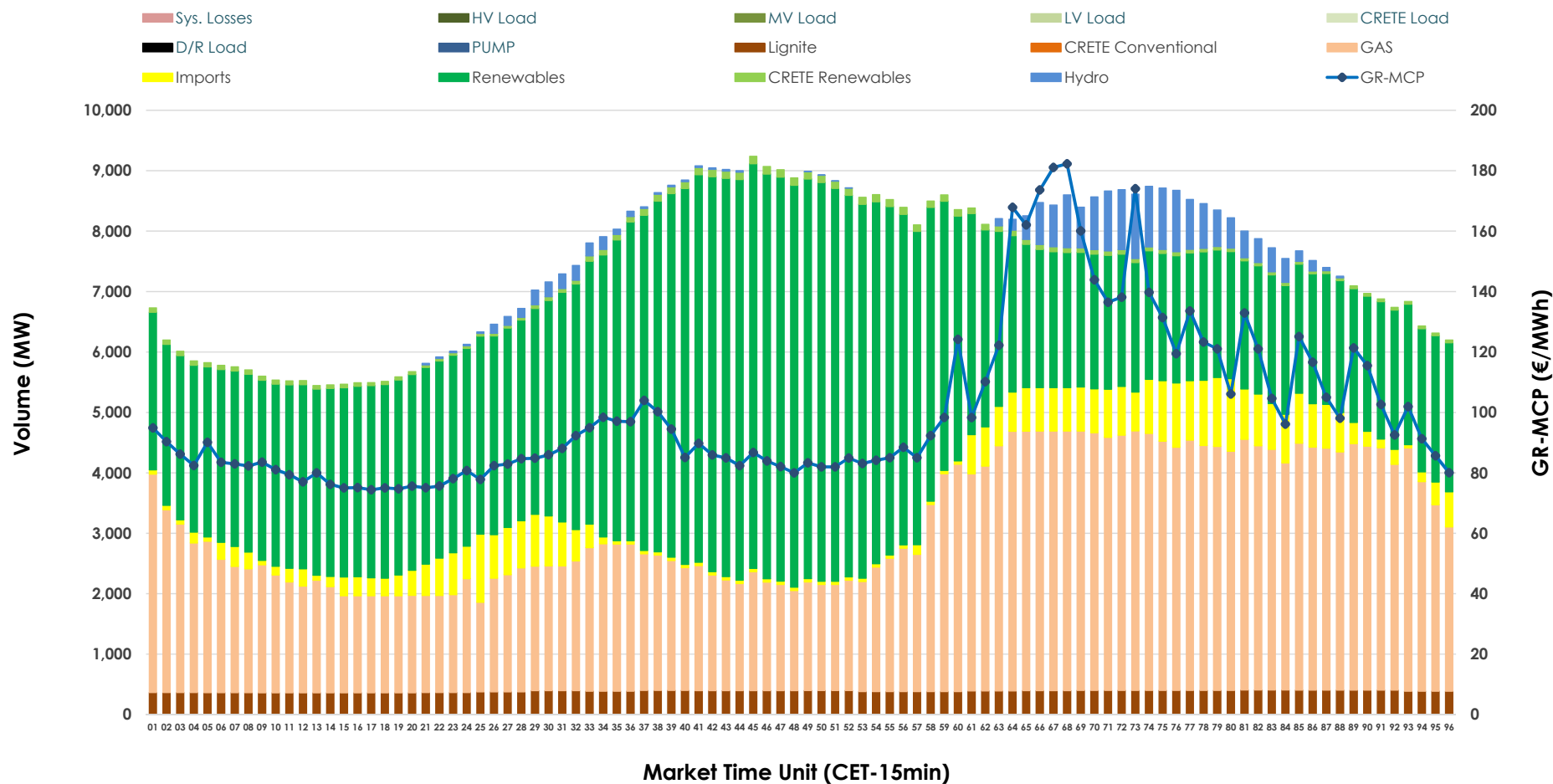


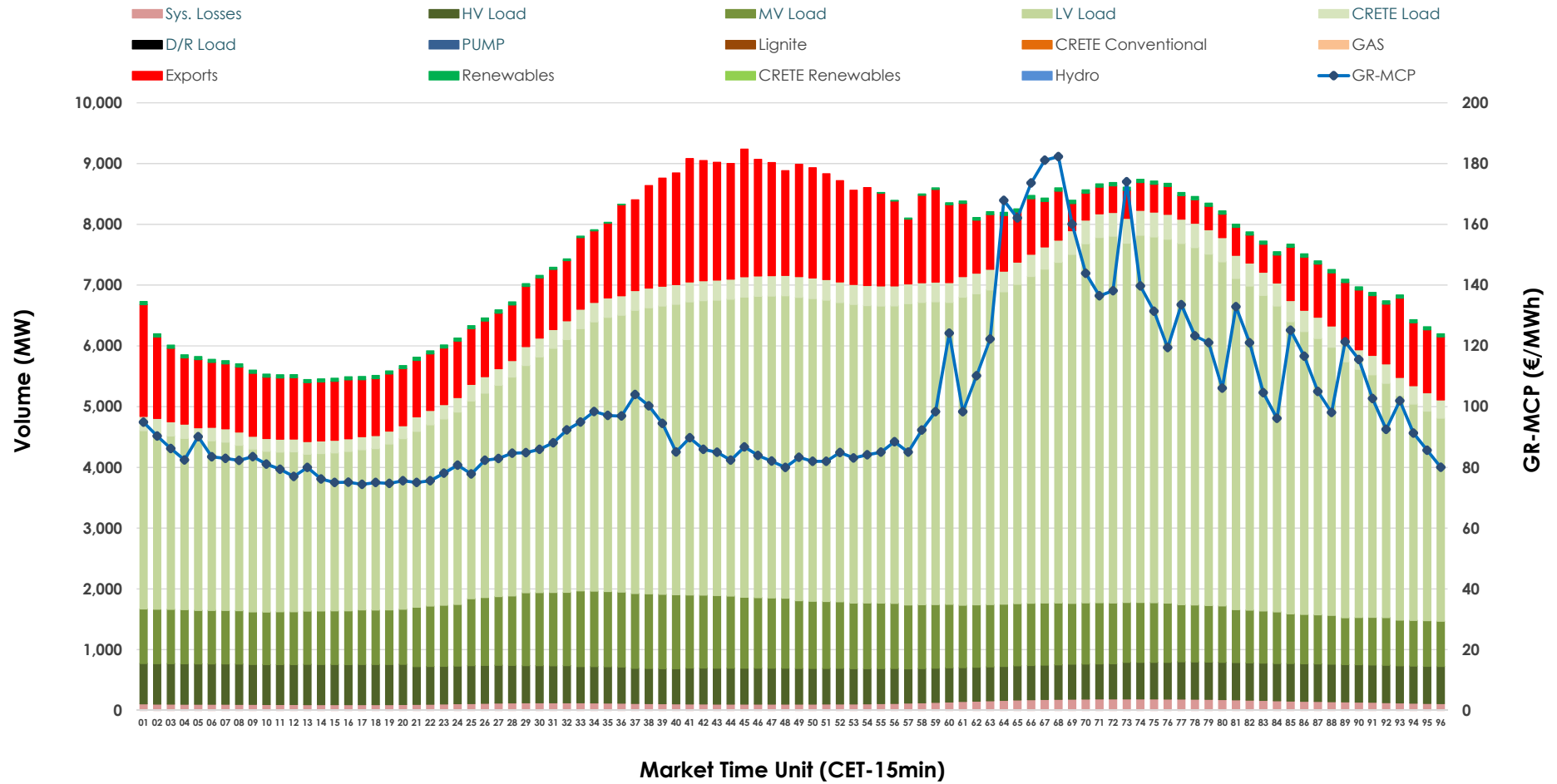


## Day-Ahead Market Outlook

31.12.2025 Day-Ahead Market - Sell



# 31.12.2025 Day-Ahead Market - Buy



### GR Bidding Zone Weekly Figures

Delivery Day	25.12	26.12	27.12	28.12	29.12	30.12	31.12
	⬇️ -17%	⬆️ 11%	⬇️ -2%	⬇️ -13%	⬆️ 22%	⬇️ -7%	⬆️ 5%
Avg.MCP (€/MWh)	88.67	98.32	96.55	84.46	102.75	95.23	100.45
Max.MCP (€/MWh)	119.59	124.74	152.08	122.61	160.91	147.44	182.30
Min.MCP (€/MWh)	62.86	75.12	43.00	0.20	58.40	0.20	74.41
	⬇️ -13%	➡️ 0%	⬆️ 12%	⬆️ 2%	➡️ 0%	➡️ 1%	⬆️ 2%
Tot.Vol(GWh)	303.98	305.27	341.57	349.06	349.51	352.11	359.47

### Trades by Order Type

Delivery Day		25.12	26.12	27.12	28.12	29.12	30.12	31.12	
Ord Price Type		Sell & Buy Trades in (GWh) per Price Type							(%)
PPT	(S)	40.208	41.170	50.161	53.357	47.322	54.153	53.153	29.57%
HBD	(S)	46.075	54.003	65.611	72.782	66.797	69.659	74.228	41.30%
BLK	(S)	43.709	50.753	43.897	42.639	53.786	47.936	44.790	24.92%
CPL	(S)	22.000	6.710	11.117	5.751	6.850	4.309	7.563	4.21%
PPT	(B)	14.707	13.846	14.817	14.794	15.215	15.576	15.549	8.65%
HBD	(B)	125.254	127.023	137.824	138.534	143.751	147.958	150.532	83.75%
BLK	(B)	0.000	0.000	0.000	0.000	0.000	0.000	0.000	0.00%
CPL	(B)	12.031	11.767	18.144	21.201	15.790	12.522	13.654	7.60%
		Sell & Buy Orders Traded per Price Type							(%)
PPT	(S)	1454	1469	1483	1471	1447	1477	1426	33.51%
HBD	(S)	2689	2703	2810	2807	2909	2857	2813	66.09%
BLK	(S)	12	21	20	19	22	16	17	0.40%
PPT	(B)	2366	2353	2397	2386	2354	2347	2361	36.53%
HBD	(B)	4157	4082	4095	4184	4138	4186	4103	63.47%
BLK	(B)	0	0	0	0	0	0	0	0.00%

<b>MCP</b>	Market Clearing Price (€/MWh)
<b>PPT</b>	Priority Price-Taking
<b>HBD</b>	Hybrid
<b>BLK</b>	Block
<b>CPL</b>	Market Coupling Flow

### Trade's Volume Mix

		Sell - MWh	Buy - MWh	
Lignite	(5.1%)	9,240	0	(0.0%)
Crete Conv.	(0.0%)	0	0	(0.0%)
Gas	(37.5%)	67,390	0	(0.0%)
Hydro	(2.5%)	4,416	0	(0.0%)
Imports	(5.6%)	9,984		
RES	(48.3%)	86,890	881	(0.5%)
Crete RES	(1.0%)	1,815	0	(0.0%)
HV Load	(0.0%)	0	14,618	(8.1%)
MV Load	(0.0%)	0	23,975	(13.3%)
LV Load	(0.0%)	0	103,540	(57.6%)
Crete Load	(0.0%)	0	7,467	(4.2%)
Pumping	(0.0%)	0	0	(0.0%)
Exports			26,152	(14.6%)
Sys.Losses	(0.0%)	0	3,102	(1.7%)
D/R Load	(0.0%)	0	0	(0.0%)

