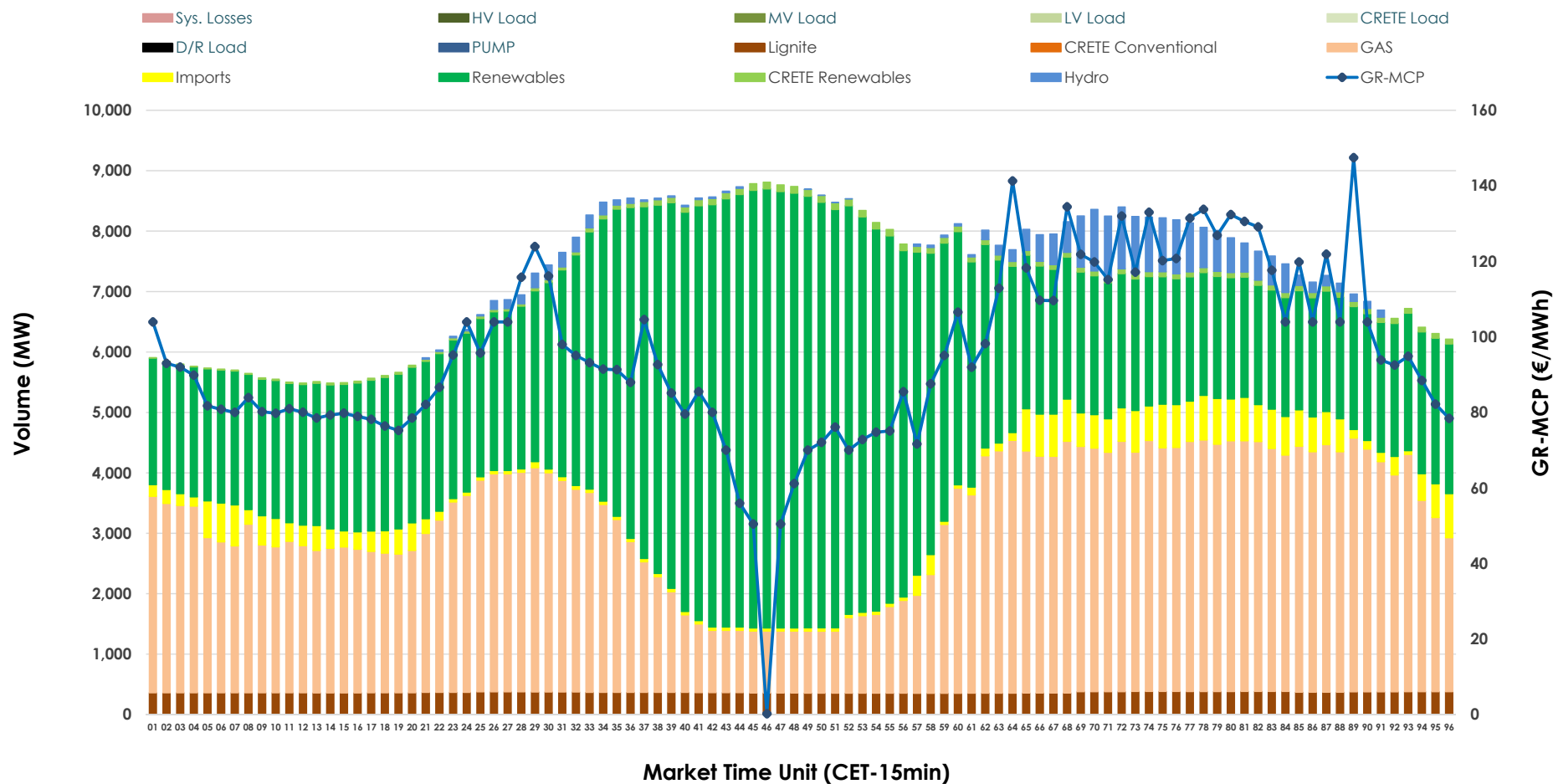


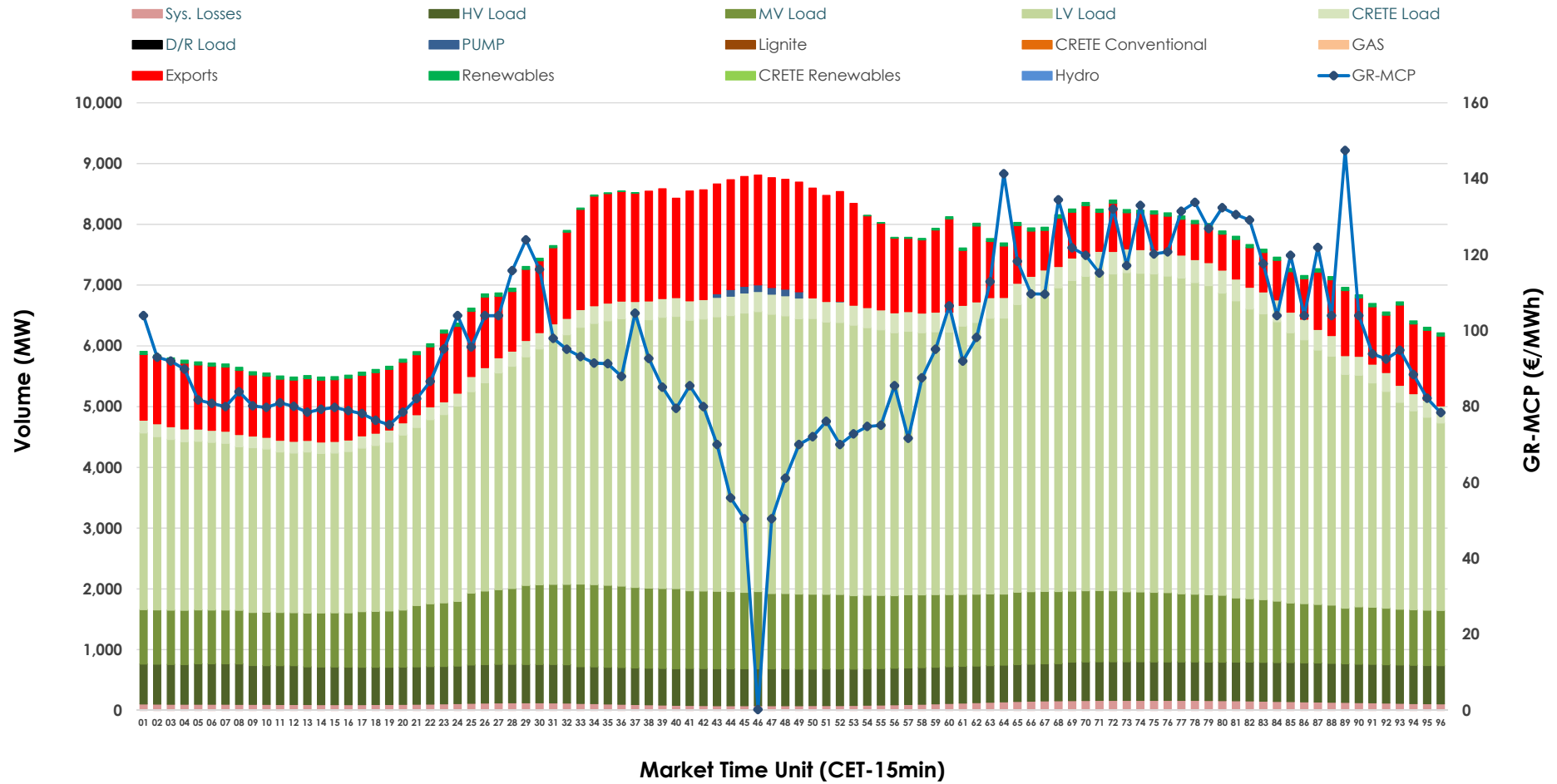


Day-Ahead Market Outlook

30.12.2025 Day-Ahead Market - Sell



30.12.2025 Day-Ahead Market - Buy



GR Bidding Zone Weekly Figures

Delivery Day	24.12	25.12	26.12	27.12	28.12	29.12	30.12
	⬇️ -9%	⬇️ -17%	⬆️ 11%	⬇️ -2%	⬇️ -13%	⬆️ 22%	⬇️ -7%
Avg.MCP (€/MWh)	106.82	88.67	98.32	96.55	84.46	102.75	95.23
Max.MCP (€/MWh)	153.29	119.59	124.74	152.08	122.61	160.91	147.44
Min.MCP (€/MWh)	55.89	62.86	75.12	43.00	0.20	58.40	0.20
	⬇️ -4%	⬇️ -13%	➡️ 0%	⬆️ 12%	⬆️ 2%	➡️ 0%	➡️ 1%
Tot.Vol(GWh)	347.64	303.98	305.27	341.57	349.06	349.51	352.11

Trades by Order Type

Delivery Day		24.12	25.12	26.12	27.12	28.12	29.12	30.12	
Ord Price Type		Sell & Buy Trades in (GWh) per Price Type							(%)
PPT	(S)	41.215	40.208	41.170	50.161	53.357	47.322	54.153	30.76%
HBD	(S)	51.304	46.075	54.003	65.611	72.782	66.797	69.659	39.57%
BLK	(S)	69.164	43.709	50.753	43.897	42.639	53.786	47.936	27.23%
CPL	(S)	12.137	22.000	6.710	11.117	5.751	6.850	4.309	2.45%
PPT	(B)	14.972	14.707	13.846	14.817	14.794	15.215	15.576	8.85%
HBD	(B)	144.502	125.254	127.023	137.824	138.534	143.751	147.958	84.04%
BLK	(B)	0.000	0.000	0.000	0.000	0.000	0.000	0.000	0.00%
CPL	(B)	14.346	12.031	11.767	18.144	21.201	15.790	12.522	7.11%
		Sell & Buy Orders Traded per Price Type							(%)
PPT	(S)	1584	1454	1469	1483	1471	1447	1477	33.95%
HBD	(S)	2854	2689	2703	2810	2807	2909	2857	65.68%
BLK	(S)	24	12	21	20	19	22	16	0.37%
PPT	(B)	2315	2366	2353	2397	2386	2354	2347	35.93%
HBD	(B)	4078	4157	4082	4095	4184	4138	4186	64.07%
BLK	(B)	0	0	0	0	0	0	0	0.00%

MCP	Market Clearing Price (€/MWh)
PPT	Priority Price-Taking
HBD	Hybrid
BLK	Block
CPL	Market Coupling Flow

Trade's Volume Mix

		Sell - MWh	Buy - MWh	
Lignite	(5.0%)	8,749	0	(0.0%)
Crete Conv.	(0.0%)	0	0	(0.0%)
Gas	(39.7%)	69,928	0	(0.0%)
Hydro	(2.6%)	4,529	0	(0.0%)
Imports	(4.1%)	7,247		
RES	(47.7%)	83,936	887	(0.5%)
Crete RES	(0.9%)	1,667	0	(0.0%)
HV Load	(0.0%)	0	14,963	(8.5%)
MV Load	(0.0%)	0	26,522	(15.1%)
LV Load	(0.0%)	0	96,084	(54.6%)
Crete Load	(0.0%)	0	7,089	(4.0%)
Pumping	(0.0%)	0	180	(0.1%)
Exports			27,537	(15.6%)
Sys.Losses	(0.0%)	0	2,795	(1.6%)
D/R Load	(0.0%)	0	0	(0.0%)

