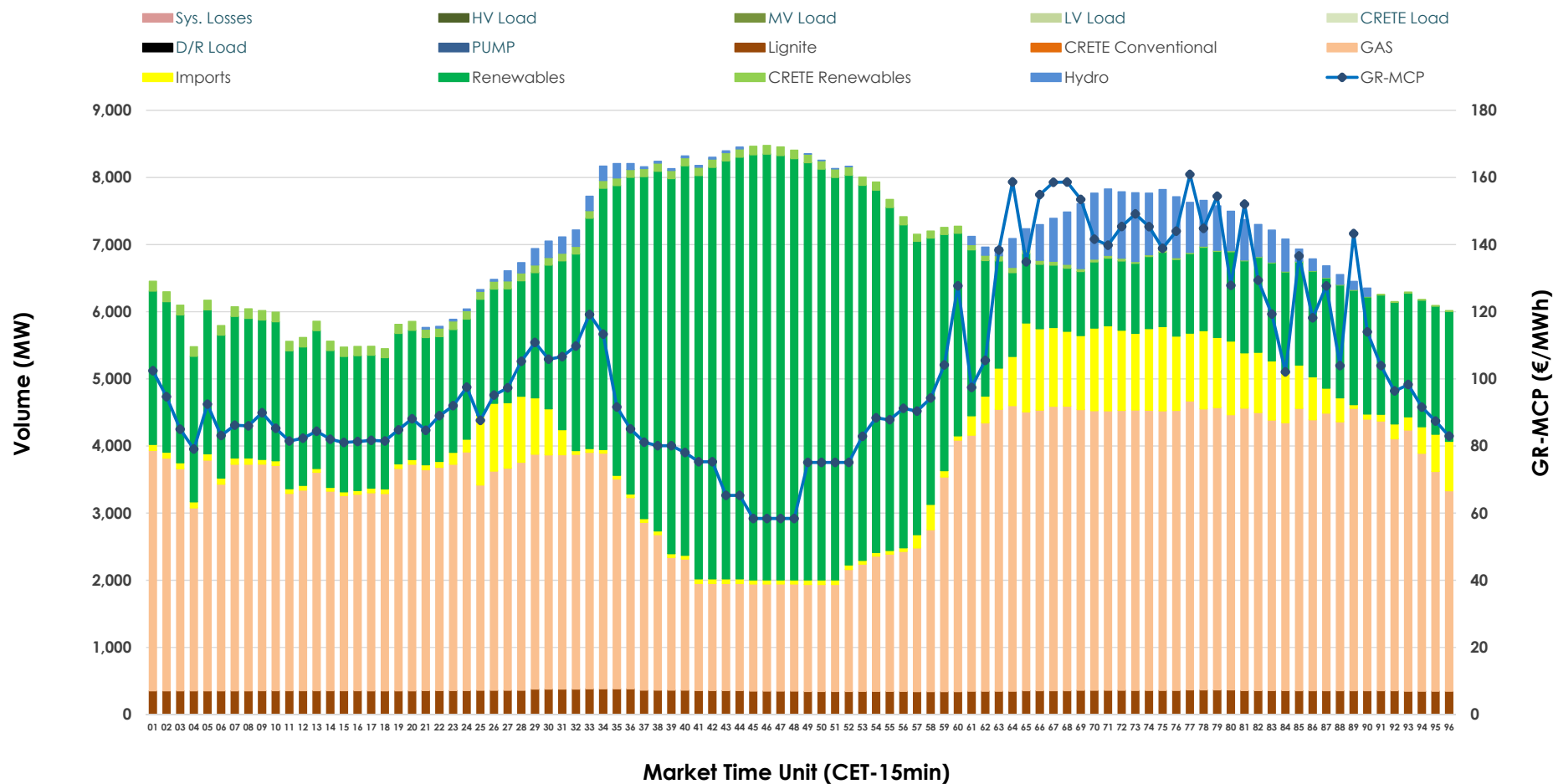


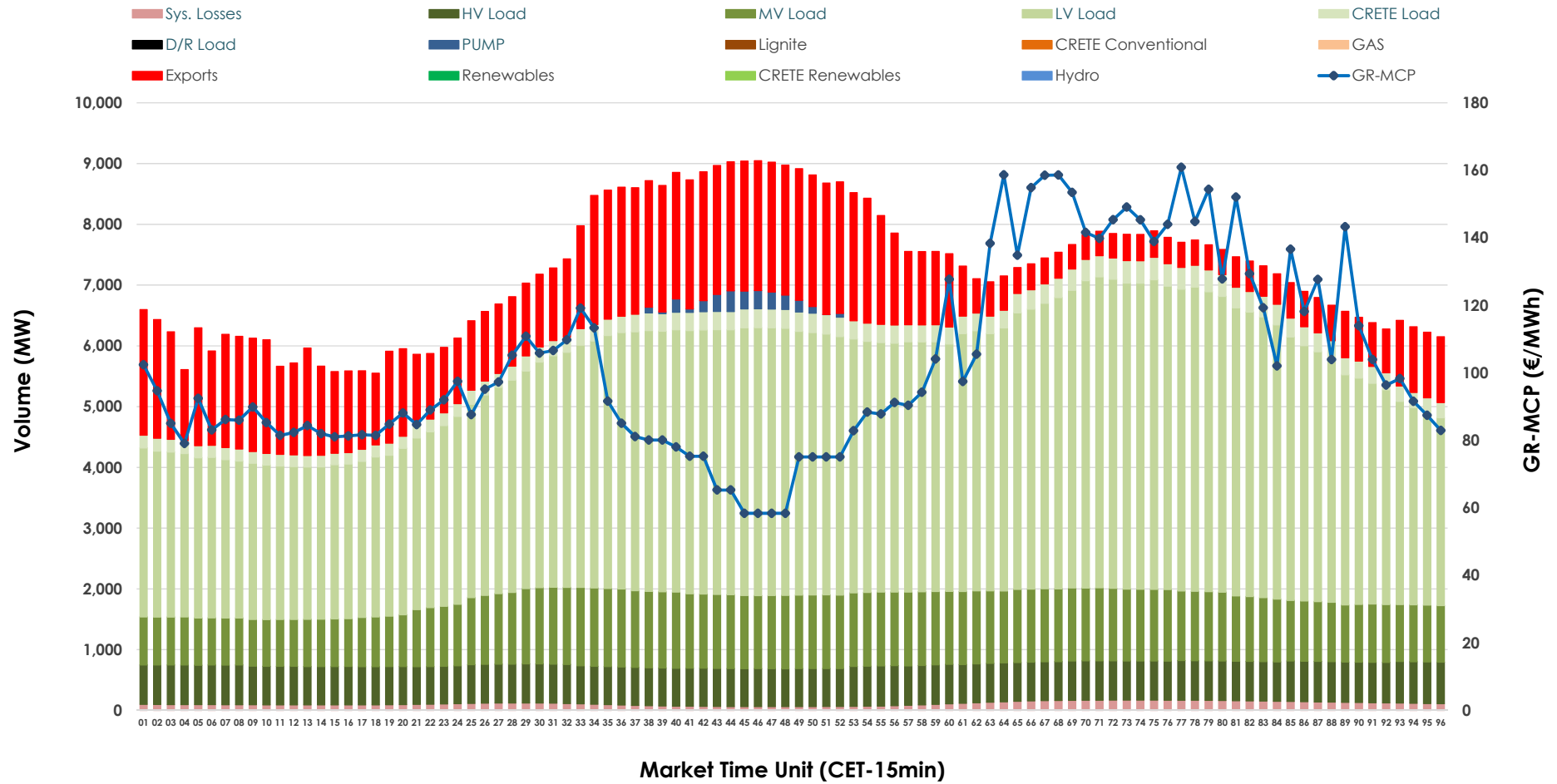


## Day-Ahead Market Outlook

29.12.2025 Day-Ahead Market - Sell



## 29.12.2025 Day-Ahead Market - Buy



### GR Bidding Zone Weekly Figures

Delivery Day	23.12	24.12	25.12	26.12	27.12	28.12	29.12
	↗ 2%	↘ -9%	↘ -17%	↗ 11%	↘ -2%	↘ -13%	↗ 22%
Avg.MCP (€/MWh)	117.69	106.82	88.67	98.32	96.55	84.46	102.75
Max.MCP (€/MWh)	200.90	153.29	119.59	124.74	152.08	122.61	160.91
Min.MCP (€/MWh)	80.29	55.89	62.86	75.12	43.00	0.20	58.40
	↘ -5%	↘ -4%	↘ -13%	→ 0%	↗ 12%	↗ 2%	→ 0%
Tot.Vol(GWh)	362.34	347.64	303.98	305.27	341.57	349.06	349.51

### Trades by Order Type

Delivery Day		23.12	24.12	25.12	26.12	27.12	28.12	29.12	
Ord Price Type		Sell & Buy Trades in (GWh) per Price Type							(%)
PPT	(S)	42.617	41.215	40.208	41.170	50.161	53.357	47.322	27.08%
HBD	(S)	65.580	51.304	46.075	54.003	65.611	72.782	66.797	38.22%
BLK	(S)	65.342	69.164	43.709	50.753	43.897	42.639	53.786	30.78%
CPL	(S)	7.633	12.137	22.000	6.710	11.117	5.751	6.850	3.92%
PPT	(B)	16.353	14.972	14.707	13.846	14.817	14.794	15.215	8.71%
HBD	(B)	147.779	144.502	125.254	127.023	137.824	138.534	143.751	82.26%
BLK	(B)	0.000	0.000	0.000	0.000	0.000	0.000	0.000	0.00%
CPL	(B)	17.040	14.346	12.031	11.767	18.144	21.201	15.790	9.04%
		Sell & Buy Orders Traded per Price Type							(%)
PPT	(S)	1576	1584	1454	1469	1483	1471	1447	33.05%
HBD	(S)	3071	2854	2689	2703	2810	2807	2909	66.45%
BLK	(S)	19	24	12	21	20	19	22	0.50%
PPT	(B)	2390	2315	2366	2353	2397	2386	2354	36.26%
HBD	(B)	4341	4078	4157	4082	4095	4184	4138	63.74%
BLK	(B)	0	0	0	0	0	0	0	0.00%

<b>MCP</b>	Market Clearing Price (€/MWh)
<b>PPT</b>	Priority Price-Taking
<b>HBD</b>	Hybrid
<b>BLK</b>	Block
<b>CPL</b>	Market Coupling Flow

### Trade's Volume Mix

		Sell - MWh	Buy - MWh	
Lignite	(5.1%)	8,560	0	(0.0%)
Crete Conv.	(0.0%)	0	0	(0.0%)
Gas	(46.0%)	77,645	0	(0.0%)
Hydro	(2.8%)	4,679	0	(0.0%)
Imports	(5.7%)	9,631		
RES	(39.2%)	66,132	0	(0.0%)
Crete RES	(1.3%)	2,171	0	(0.0%)
HV Load	(0.0%)	0	15,427	(8.9%)
MV Load	(0.0%)	0	25,776	(14.8%)
LV Load	(0.0%)	0	92,412	(53.1%)
Crete Load	(0.0%)	0	6,624	(3.8%)
Pumping	(0.0%)	0	670	(0.4%)
Exports			30,290	(17.4%)
Sys.Losses	(0.0%)	0	2,674	(1.5%)
D/R Load	(0.0%)	0	0	(0.0%)

