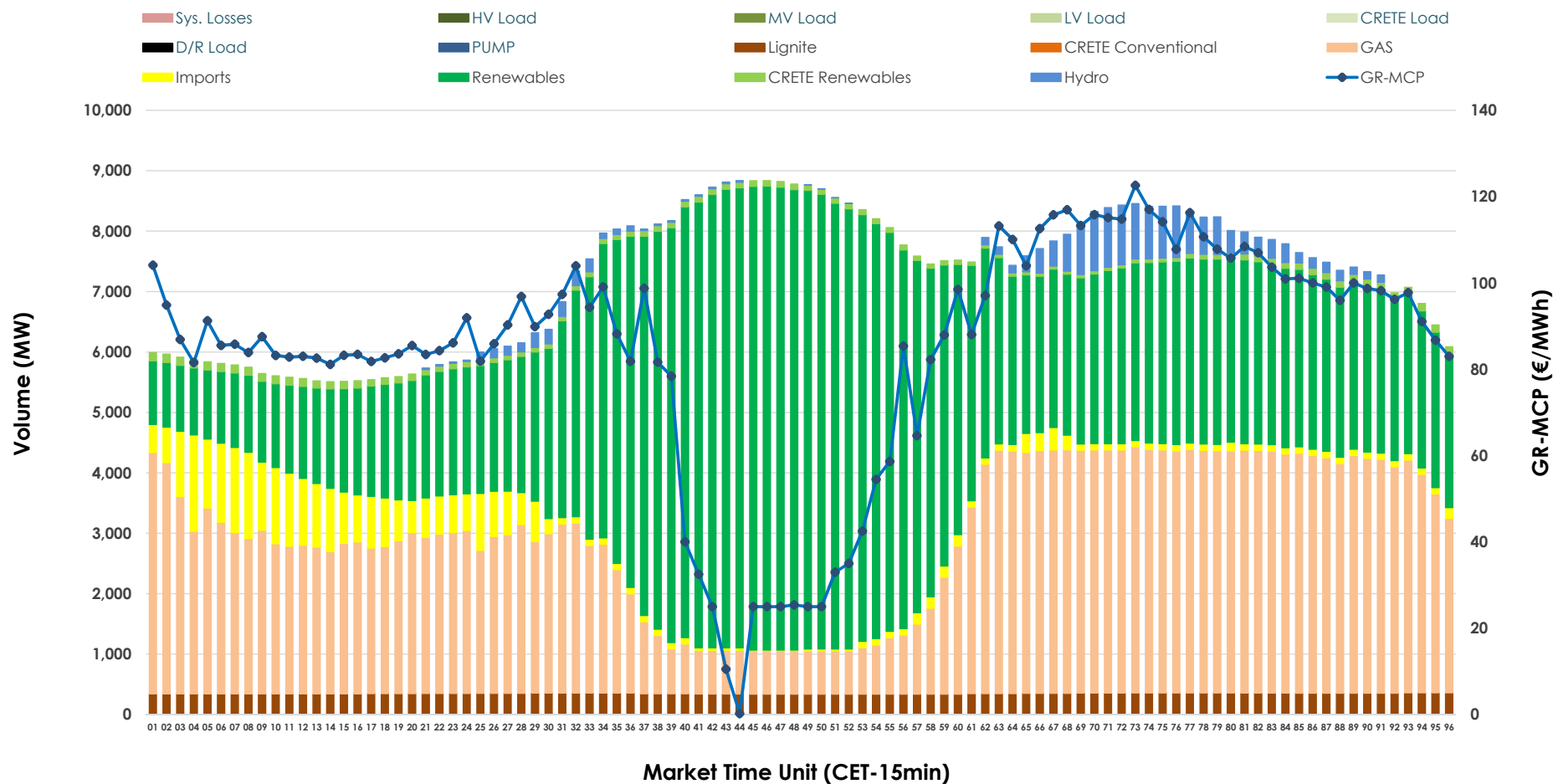


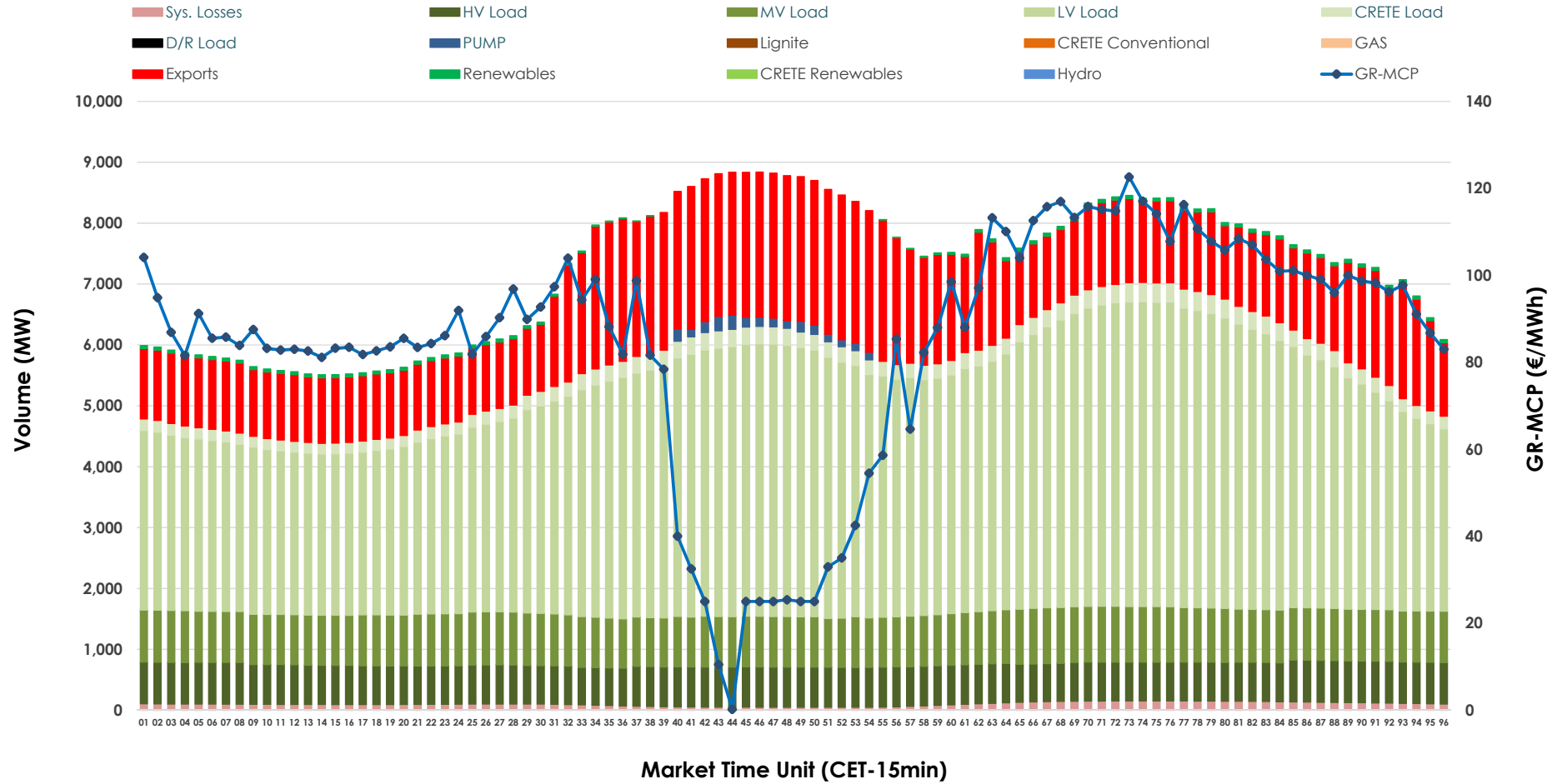


## Day-Ahead Market Outlook

28.12.2025 Day-Ahead Market - Sell



## 28.12.2025 Day-Ahead Market - Buy



### GR Bidding Zone Weekly Figures

Delivery Day	22.12	23.12	24.12	25.12	26.12	27.12	28.12
	↗ 10%	↗ 2%	↘ -9%	↘ -17%	↗ 11%	↘ -2%	↘ -13%
<b>Avg.MCP (€/MWh)</b>	115.83	117.69	106.82	88.67	98.32	96.55	84.46
<b>Max.MCP (€/MWh)</b>	189.83	200.90	153.29	119.59	124.74	152.08	122.61
<b>Min.MCP (€/MWh)</b>	82.50	80.29	55.89	62.86	75.12	43.00	0.20
	↗ 10%	↘ -5%	↘ -4%	↘ -13%	→ 0%	↗ 12%	↗ 2%
<b>Tot.Vol(GWh)</b>	379.81	362.34	347.64	303.98	305.27	341.57	349.06

### Trades by Order Type

Delivery Day		22.12	23.12	24.12	25.12	26.12	27.12	28.12	
Ord Price Type		Sell & Buy Trades in (GWh) per Price Type							(%)
PPT	(S)	47.746	42.617	41.215	40.208	41.170	50.161	53.357	30.57%
HBD	(S)	75.580	65.580	51.304	46.075	54.003	65.611	72.782	41.70%
BLK	(S)	62.646	65.342	69.164	43.709	50.753	43.897	42.639	24.43%
CPL	(S)	3.935	7.633	12.137	22.000	6.710	11.117	5.751	3.30%
PPT	(B)	15.606	16.353	14.972	14.707	13.846	14.817	14.794	8.48%
HBD	(B)	148.119	147.779	144.502	125.254	127.023	137.824	138.534	79.38%
BLK	(B)	0.000	0.000	0.000	0.000	0.000	0.000	0.000	0.00%
CPL	(B)	26.181	17.040	14.346	12.031	11.767	18.144	21.201	12.15%
		Sell & Buy Orders Traded per Price Type							(%)
PPT	(S)	1525	1576	1584	1454	1469	1483	1471	34.23%
HBD	(S)	3105	3071	2854	2689	2703	2810	2807	65.32%
BLK	(S)	21	19	24	12	21	20	19	0.44%
PPT	(B)	2377	2390	2315	2366	2353	2397	2386	36.32%
HBD	(B)	4130	4341	4078	4157	4082	4095	4184	63.68%
BLK	(B)	0	0	0	0	0	0	0	0.00%

<b>MCP</b>	Market Clearing Price (€/MWh)
<b>PPT</b>	Priority Price-Taking
<b>HBD</b>	Hybrid
<b>BLK</b>	Block
<b>CPL</b>	Market Coupling Flow

### Trade's Volume Mix

		Sell - MWh	Buy - MWh	
Lignite	(4.8%)	8,333	0	(0.0%)
Crete Conv.	(0.0%)	0	0	(0.0%)
Gas	(37.0%)	64,503	0	(0.0%)
Hydro	(2.3%)	4,071	0	(0.0%)
Imports	(4.9%)	8,487		
RES	(49.8%)	86,924	888	(0.5%)
Crete RES	(1.3%)	2,210	0	(0.0%)
HV Load	(0.0%)	0	15,637	(9.0%)
MV Load	(0.0%)	0	20,453	(11.7%)
LV Load	(0.0%)	0	91,083	(52.2%)
Crete Load	(0.0%)	0	5,908	(3.4%)
Pumping	(0.0%)	0	594	(0.3%)
Exports			37,549	(21.5%)
Sys.Losses	(0.0%)	0	2,416	(1.4%)
D/R Load	(0.0%)	0	0	(0.0%)

