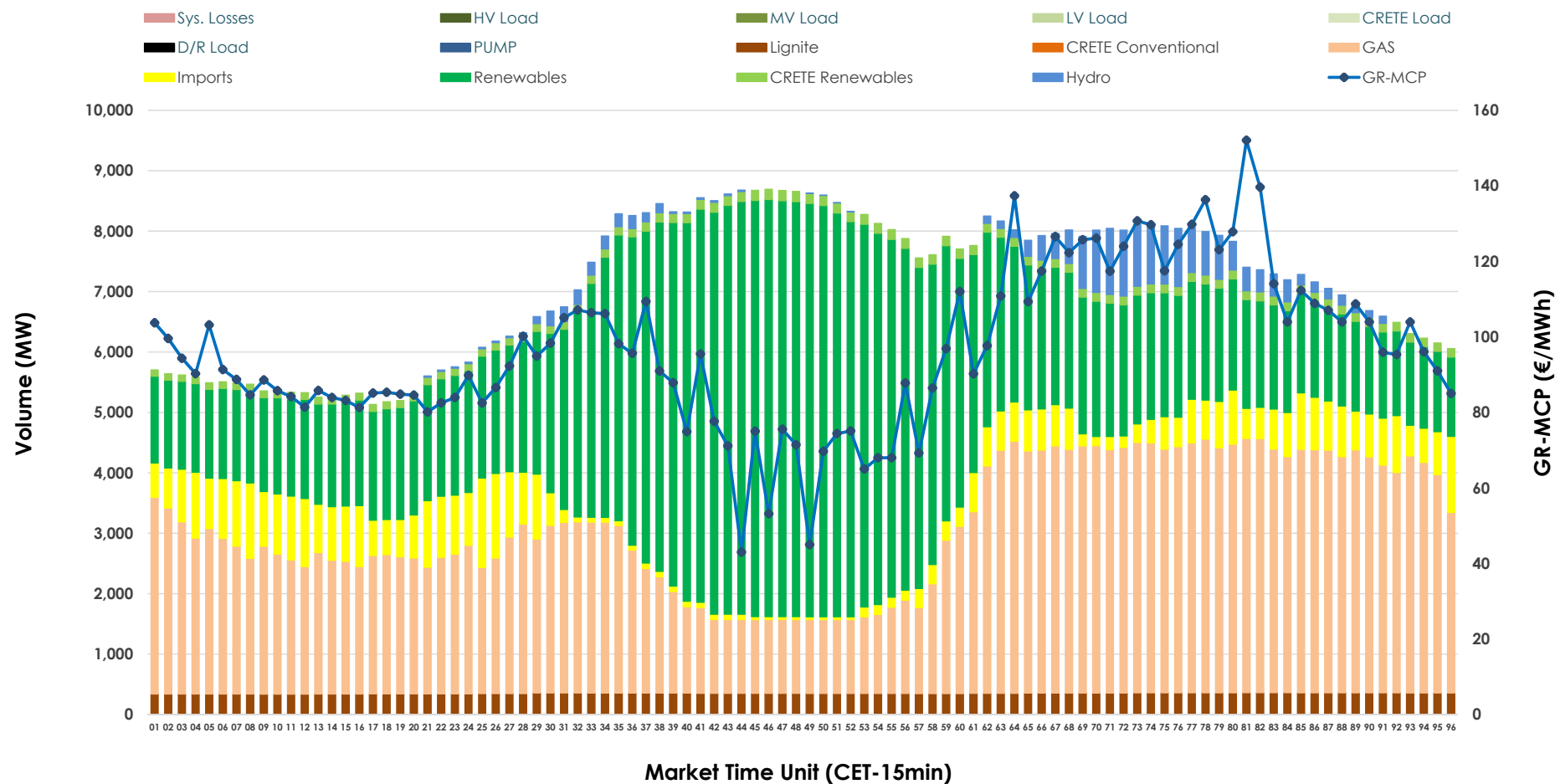


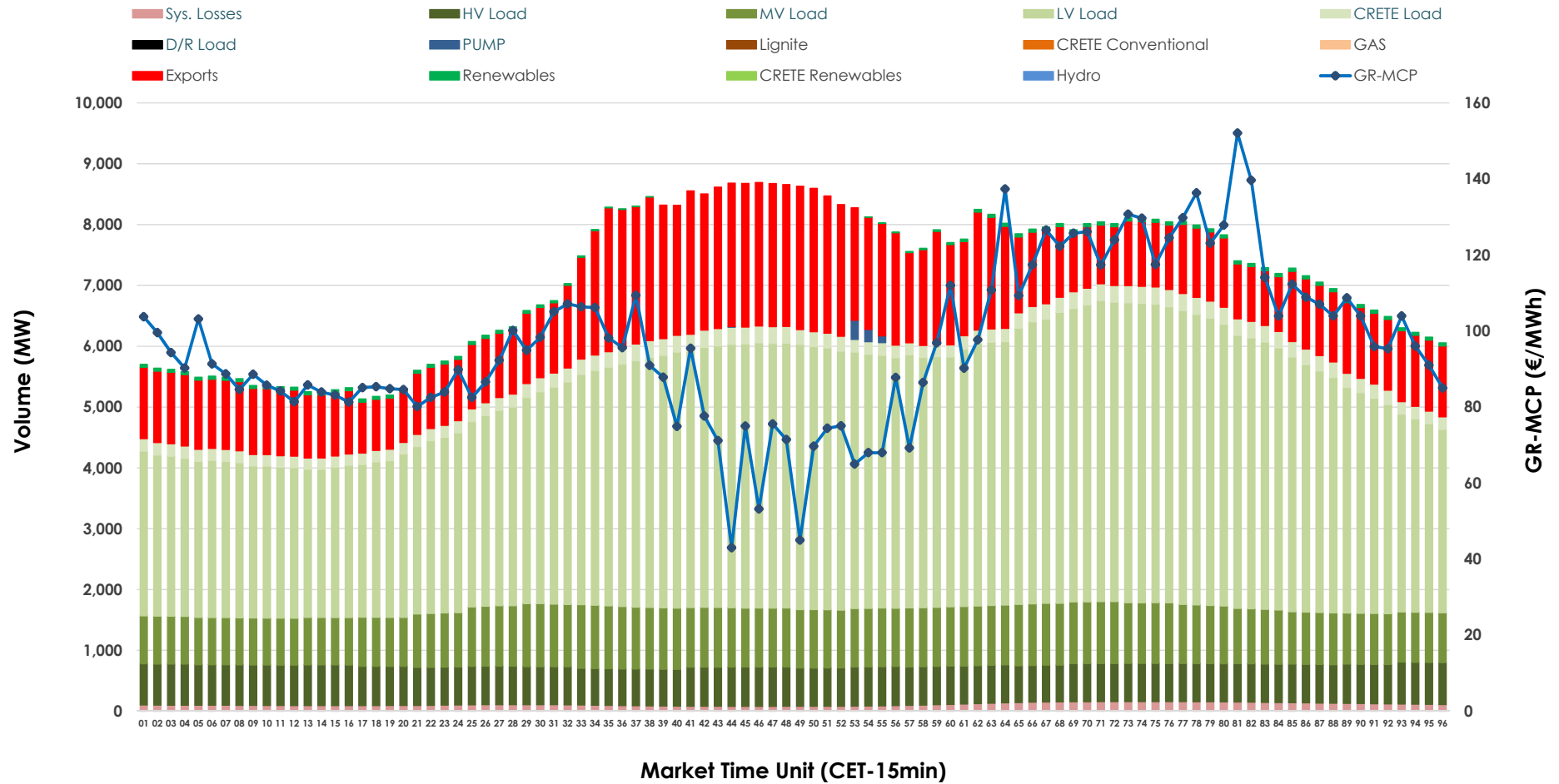


Day-Ahead Market Outlook

27.12.2025 Day-Ahead Market - Sell



27.12.2025 Day-Ahead Market - Buy



GR Bidding Zone Weekly Figures

| Delivery Day | 21.12 | 22.12 | 23.12 | 24.12 | 25.12 | 26.12 | 27.12 |
|-----------------|--------|--------|--------|--------|---------|--------|--------|
| | ⬇️ -4% | ⬆️ 10% | ⬆️ 2% | ⬇️ -9% | ⬇️ -17% | ⬆️ 11% | ⬇️ -2% |
| Avg.MCP (€/MWh) | 104.94 | 115.83 | 117.69 | 106.82 | 88.67 | 98.32 | 96.55 |
| Max.MCP (€/MWh) | 128.02 | 189.83 | 200.90 | 153.29 | 119.59 | 124.74 | 152.08 |
| Min.MCP (€/MWh) | 86.03 | 82.50 | 80.29 | 55.89 | 62.86 | 75.12 | 43.00 |
| | ⬇️ -3% | ⬆️ 10% | ⬇️ -5% | ⬇️ -4% | ⬇️ -13% | ➡️ 0% | ⬆️ 12% |
| Tot.Vol(GWh) | 345.80 | 379.81 | 362.34 | 347.64 | 303.98 | 305.27 | 341.57 |

Trades by Order Type

| Delivery Day | | 21.12 | 22.12 | 23.12 | 24.12 | 25.12 | 26.12 | 27.12 | |
|----------------|-----|---|---------|---------|---------|---------|---------|---------|--------|
| Ord Price Type | | Sell & Buy Trades in (GWh) per Price Type | | | | | | | (%) |
| PPT | (S) | 44.622 | 47.746 | 42.617 | 41.215 | 40.208 | 41.170 | 50.161 | 29.37% |
| HBD | (S) | 66.469 | 75.580 | 65.580 | 51.304 | 46.075 | 54.003 | 65.611 | 38.42% |
| BLK | (S) | 59.501 | 62.646 | 65.342 | 69.164 | 43.709 | 50.753 | 43.897 | 25.70% |
| CPL | (S) | 2.306 | 3.935 | 7.633 | 12.137 | 22.000 | 6.710 | 11.117 | 6.51% |
| PPT | (B) | 14.996 | 15.606 | 16.353 | 14.972 | 14.707 | 13.846 | 14.817 | 8.68% |
| HBD | (B) | 135.059 | 148.119 | 147.779 | 144.502 | 125.254 | 127.023 | 137.824 | 80.70% |
| BLK | (B) | 0.000 | 0.000 | 0.000 | 0.000 | 0.000 | 0.000 | 0.000 | 0.00% |
| CPL | (B) | 22.844 | 26.181 | 17.040 | 14.346 | 12.031 | 11.767 | 18.144 | 10.62% |
| | | Sell & Buy Orders Traded per Price Type | | | | | | | (%) |
| PPT | (S) | 1576 | 1525 | 1576 | 1584 | 1454 | 1469 | 1483 | 34.38% |
| HBD | (S) | 3013 | 3105 | 3071 | 2854 | 2689 | 2703 | 2810 | 65.15% |
| BLK | (S) | 20 | 21 | 19 | 24 | 12 | 21 | 20 | 0.46% |
| PPT | (B) | 2338 | 2377 | 2390 | 2315 | 2366 | 2353 | 2397 | 36.92% |
| HBD | (B) | 4109 | 4130 | 4341 | 4078 | 4157 | 4082 | 4095 | 63.08% |
| BLK | (B) | 0 | 0 | 0 | 0 | 0 | 0 | 0 | 0.00% |

| | |
|-----|-------------------------------|
| MCP | Market Clearing Price (€/MWh) |
| PPT | Priority Price-Taking |
| HBD | Hybrid |
| BLK | Block |
| CPL | Market Coupling Flow |

Trade's Volume Mix

| | | Sell - MWh | Buy - MWh | |
|-------------|---------|------------|-----------|---------|
| Lignite | (4.9%) | 8,406 | 0 | (0.0%) |
| Crete Conv. | (0.0%) | 0 | 0 | (0.0%) |
| Gas | (39.2%) | 66,975 | 0 | (0.0%) |
| Hydro | (2.6%) | 4,393 | 0 | (0.0%) |
| Imports | (8.0%) | 13,600 | | |
| RES | (43.4%) | 74,079 | 893 | (0.5%) |
| Crete RES | (2.0%) | 3,332 | 0 | (0.0%) |
| HV Load | (0.0%) | 0 | 15,320 | (9.0%) |
| MV Load | (0.0%) | 0 | 22,109 | (12.9%) |
| LV Load | (0.0%) | 0 | 90,184 | (52.8%) |
| Crete Load | (0.0%) | 0 | 5,636 | (3.3%) |
| Pumping | (0.0%) | 0 | 160 | (0.1%) |
| Exports | | | 33,830 | (19.8%) |
| Sys.Losses | (0.0%) | 0 | 2,653 | (1.6%) |
| D/R Load | (0.0%) | 0 | 0 | (0.0%) |

