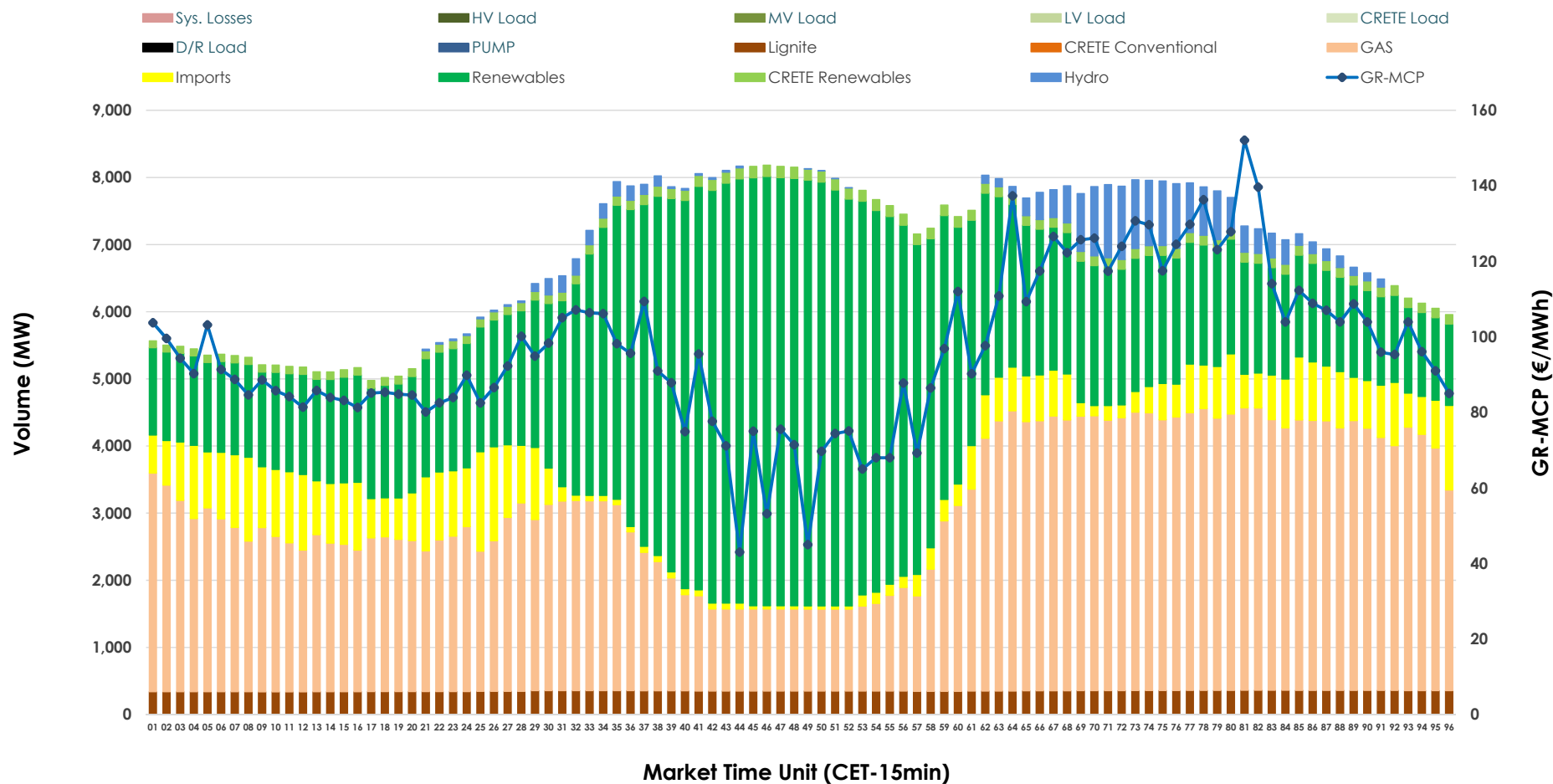


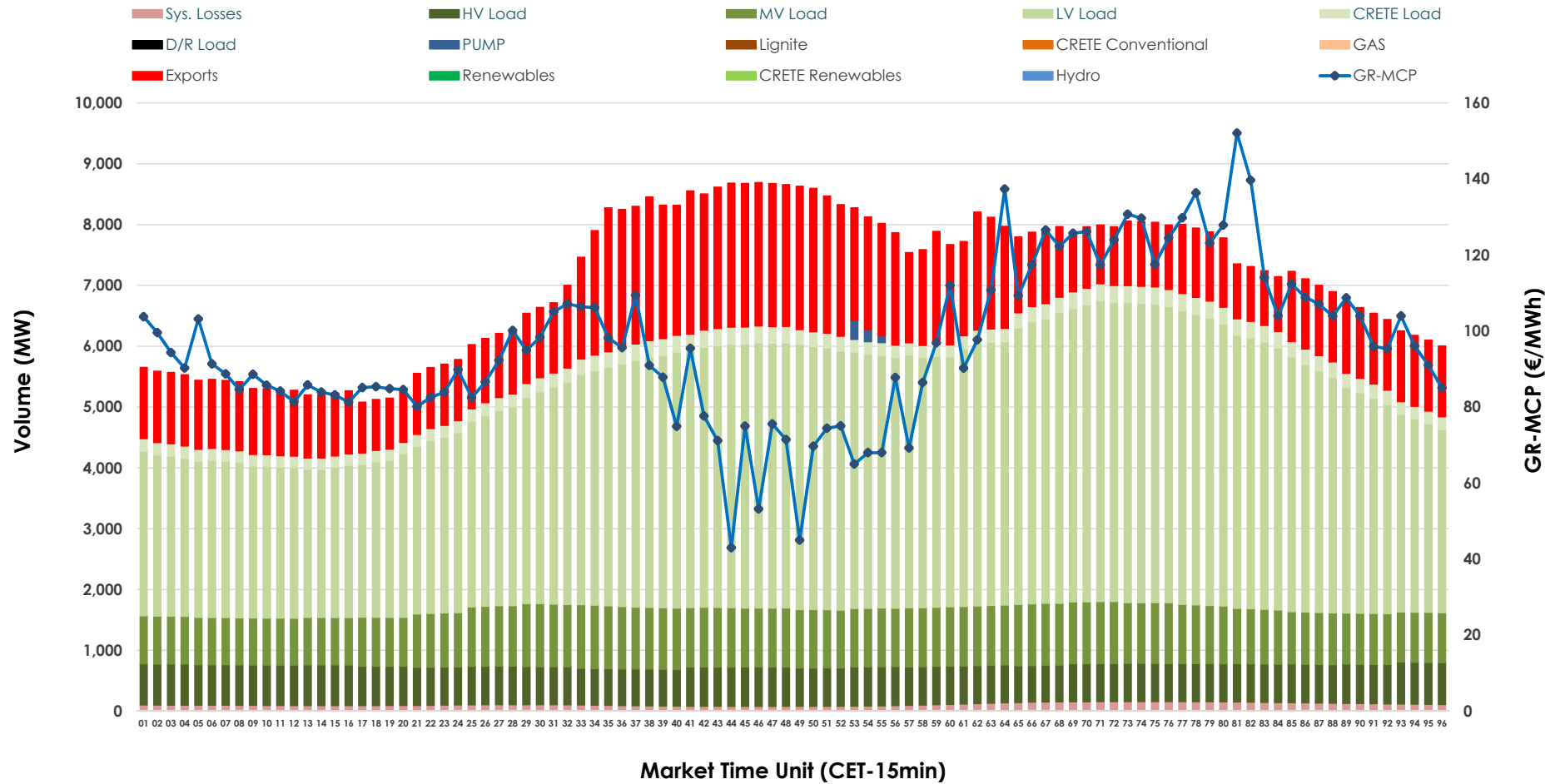


Day-Ahead Market Outlook

27.12.2025 Day-Ahead Market - Sell



27.12.2025 Day-Ahead Market - Buy



GR Bidding Zone Weekly Figures

Delivery Day	21.12	22.12	23.12	24.12	25.12	26.12	27.12
	⬇️ -4%	⬆️ 10%	⬆️ 2%	⬇️ -9%	⬇️ -17%	⬆️ 11%	⬇️ -2%
Avg.MCP (€/MWh)	104.94	115.83	117.69	106.82	88.67	98.32	96.55
Max.MCP (€/MWh)	128.02	189.83	200.90	153.29	119.59	124.74	152.08
Min.MCP (€/MWh)	86.03	82.50	80.29	55.89	62.86	75.12	43.00
	⬇️ -3%	⬆️ 10%	⬇️ -5%	⬇️ -4%	⬇️ -13%	➡️ 0%	⬆️ 12%
Tot.Vol(GWh)	345.80	379.81	362.34	347.64	303.98	305.27	341.57

Trades by Order Type

Delivery Day		21.12	22.12	23.12	24.12	25.12	26.12	27.12	
Ord Price Type		Sell & Buy Trades in (GWh) per Price Type							(%)
PPT	(S)	44.622	47.746	42.617	41.215	40.208	41.170	50.161	29.37%
HBD	(S)	66.469	75.580	65.580	51.304	46.075	54.003	65.611	38.42%
BLK	(S)	59.501	62.646	65.342	69.164	43.709	50.753	43.897	25.70%
CPL	(S)	2.306	3.935	7.633	12.137	22.000	6.710	11.117	6.51%
PPT	(B)	14.996	15.606	16.353	14.972	14.707	13.846	14.817	8.68%
HBD	(B)	135.059	148.119	147.779	144.502	125.254	127.023	137.824	80.70%
BLK	(B)	0.000	0.000	0.000	0.000	0.000	0.000	0.000	0.00%
CPL	(B)	22.844	26.181	17.040	14.346	12.031	11.767	18.144	10.62%
		Sell & Buy Orders Traded per Price Type							(%)
PPT	(S)	1576	1525	1576	1584	1454	1469	1483	34.38%
HBD	(S)	3013	3105	3071	2854	2689	2703	2810	65.15%
BLK	(S)	20	21	19	24	12	21	20	0.46%
PPT	(B)	2338	2377	2390	2315	2366	2353	2397	36.92%
HBD	(B)	4109	4130	4341	4078	4157	4082	4095	63.08%
BLK	(B)	0	0	0	0	0	0	0	0.00%

MCP	Market Clearing Price (€/MWh)
PPT	Priority Price-Taking
HBD	Hybrid
BLK	Block
CPL	Market Coupling Flow

Trade's Volume Mix

		Sell - MWh	Buy - MWh	
Lignite	(5.1%)	8,406	0	(0.0%)
Crete Conv.	(0.0%)	0	0	(0.0%)
Gas	(40.5%)	66,975	0	(0.0%)
Hydro	(2.7%)	4,393	0	(0.0%)
Imports	(8.2%)	13,600		
RES	(41.5%)	68,530	0	(0.0%)
Crete RES	(2.0%)	3,332	0	(0.0%)
HV Load	(0.0%)	0	15,320	(9.0%)
MV Load	(0.0%)	0	22,109	(13.0%)
LV Load	(0.0%)	0	90,184	(53.1%)
Crete Load	(0.0%)	0	5,636	(3.3%)
Pumping	(0.0%)	0	160	(0.1%)
Exports			33,830	(19.9%)
Sys.Losses	(0.0%)	0	2,653	(1.6%)
D/R Load	(0.0%)	0	0	(0.0%)

