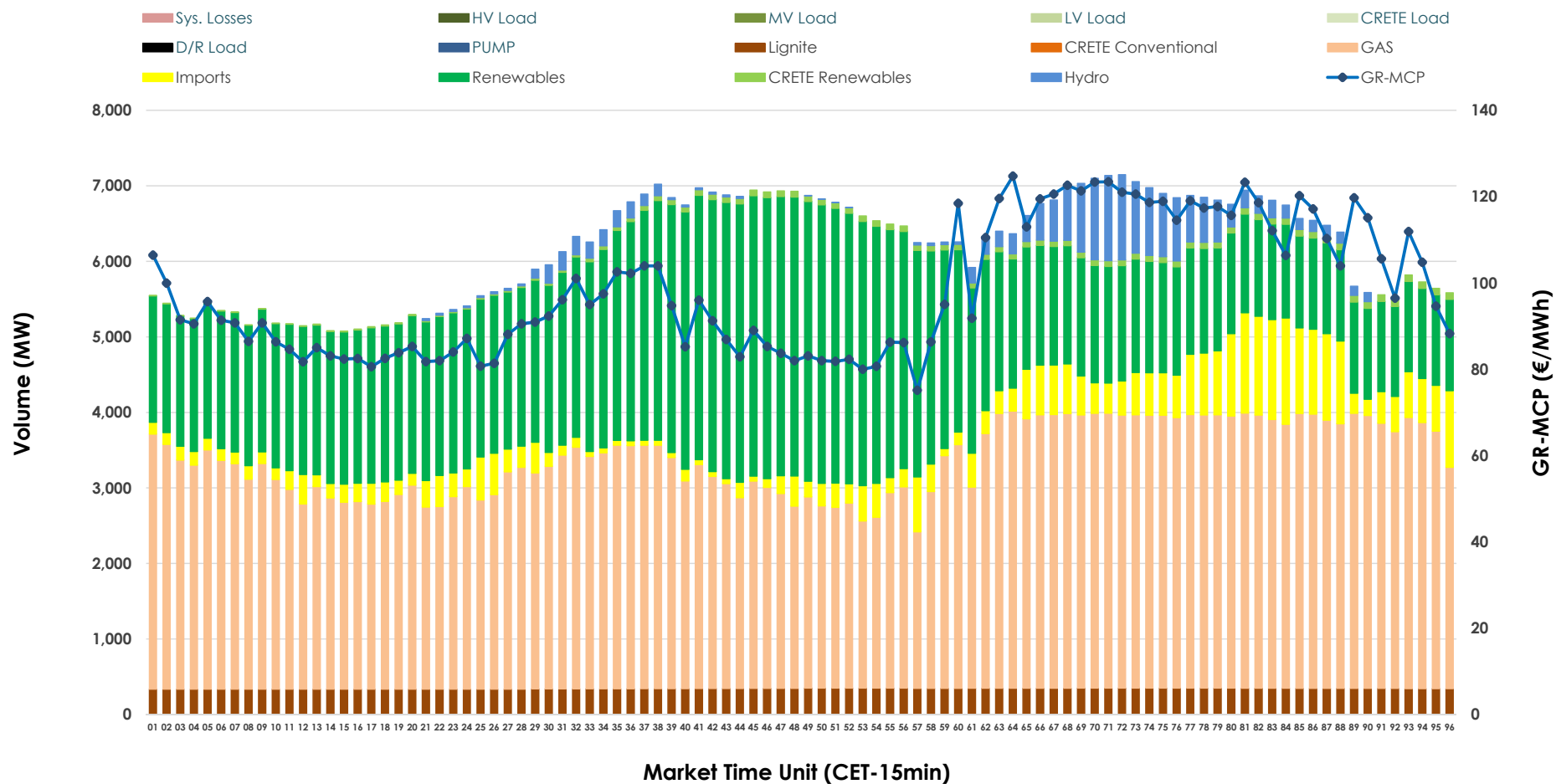


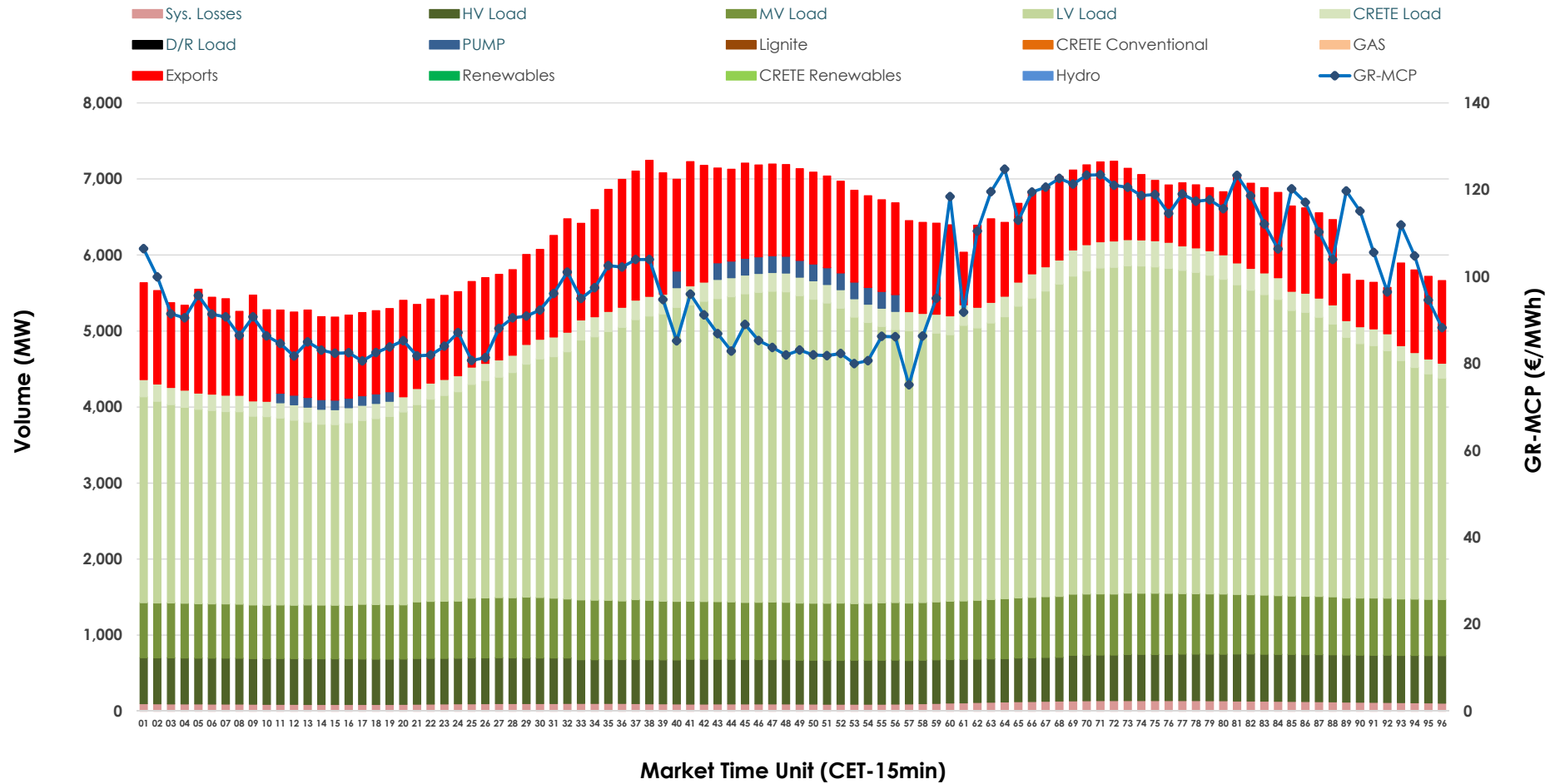


Day-Ahead Market Outlook

26.12.2025 Day-Ahead Market - Sell



26.12.2025 Day-Ahead Market - Buy



GR Bidding Zone Weekly Figures

Delivery Day	20.12	21.12	22.12	23.12	24.12	25.12	26.12
	📉 -16%	📉 -4%	📈 10%	📈 2%	📉 -9%	📉 -17%	📈 11%
Avg.MCP (€/MWh)	109.54	104.94	115.83	117.69	106.82	88.67	98.32
Max.MCP (€/MWh)	137.32	128.02	189.83	200.90	153.29	119.59	124.74
Min.MCP (€/MWh)	84.37	86.03	82.50	80.29	55.89	62.86	75.12
	➡ 0%	📉 -3%	📈 10%	📉 -5%	📉 -4%	📉 -13%	➡ 0%
Tot.Vol(GWh)	355.51	345.80	379.81	362.34	347.64	303.98	305.27

Trades by Order Type

Delivery Day		20.12	21.12	22.12	23.12	24.12	25.12	26.12	
Ord Price Type		Sell & Buy Trades in (GWh) per Price Type							(%)
PPT	(S)	42.265	44.622	47.746	42.617	41.215	40.208	41.170	26.97%
HBD	(S)	64.970	66.469	75.580	65.580	51.304	46.075	54.003	35.38%
BLK	(S)	63.533	59.501	62.646	65.342	69.164	43.709	50.753	33.25%
CPL	(S)	6.985	2.306	3.935	7.633	12.137	22.000	6.710	4.40%
PPT	(B)	15.453	14.996	15.606	16.353	14.972	14.707	13.846	9.07%
HBD	(B)	145.723	135.059	148.119	147.779	144.502	125.254	127.023	83.22%
BLK	(B)	0.000	0.000	0.000	0.000	0.000	0.000	0.000	0.00%
CPL	(B)	16.577	22.844	26.181	17.040	14.346	12.031	11.767	7.71%
		Sell & Buy Orders Traded per Price Type							(%)
PPT	(S)	1537	1576	1525	1576	1584	1454	1469	35.03%
HBD	(S)	3080	3013	3105	3071	2854	2689	2703	64.46%
BLK	(S)	20	20	21	19	24	12	21	0.50%
PPT	(B)	2332	2338	2377	2390	2315	2366	2353	36.57%
HBD	(B)	4193	4109	4130	4341	4078	4157	4082	63.43%
BLK	(B)	0	0	0	0	0	0	0	0.00%

MCP	Market Clearing Price (€/MWh)
PPT	Priority Price-Taking
HBD	Hybrid
BLK	Block
CPL	Market Coupling Flow

Trade's Volume Mix

		Sell - MWh	Buy - MWh	
Lignite	(5.5%)	8,235	0	(0.0%)
Crete Conv.	(0.0%)	0	0	(0.0%)
Gas	(49.3%)	73,306	0	(0.0%)
Hydro	(2.9%)	4,242	0	(0.0%)
Imports	(6.6%)	9,753		
RES	(34.8%)	51,736	0	(0.0%)
Crete RES	(0.9%)	1,318	0	(0.0%)
HV Load	(0.0%)	0	14,306	(9.4%)
MV Load	(0.0%)	0	18,241	(12.0%)
LV Load	(0.0%)	0	82,098	(54.1%)
Crete Load	(0.0%)	0	6,050	(4.0%)
Pumping	(0.0%)	0	1,106	(0.7%)
Exports			27,339	(18.0%)
Sys.Losses	(0.0%)	0	2,579	(1.7%)
D/R Load	(0.0%)	0	0	(0.0%)

