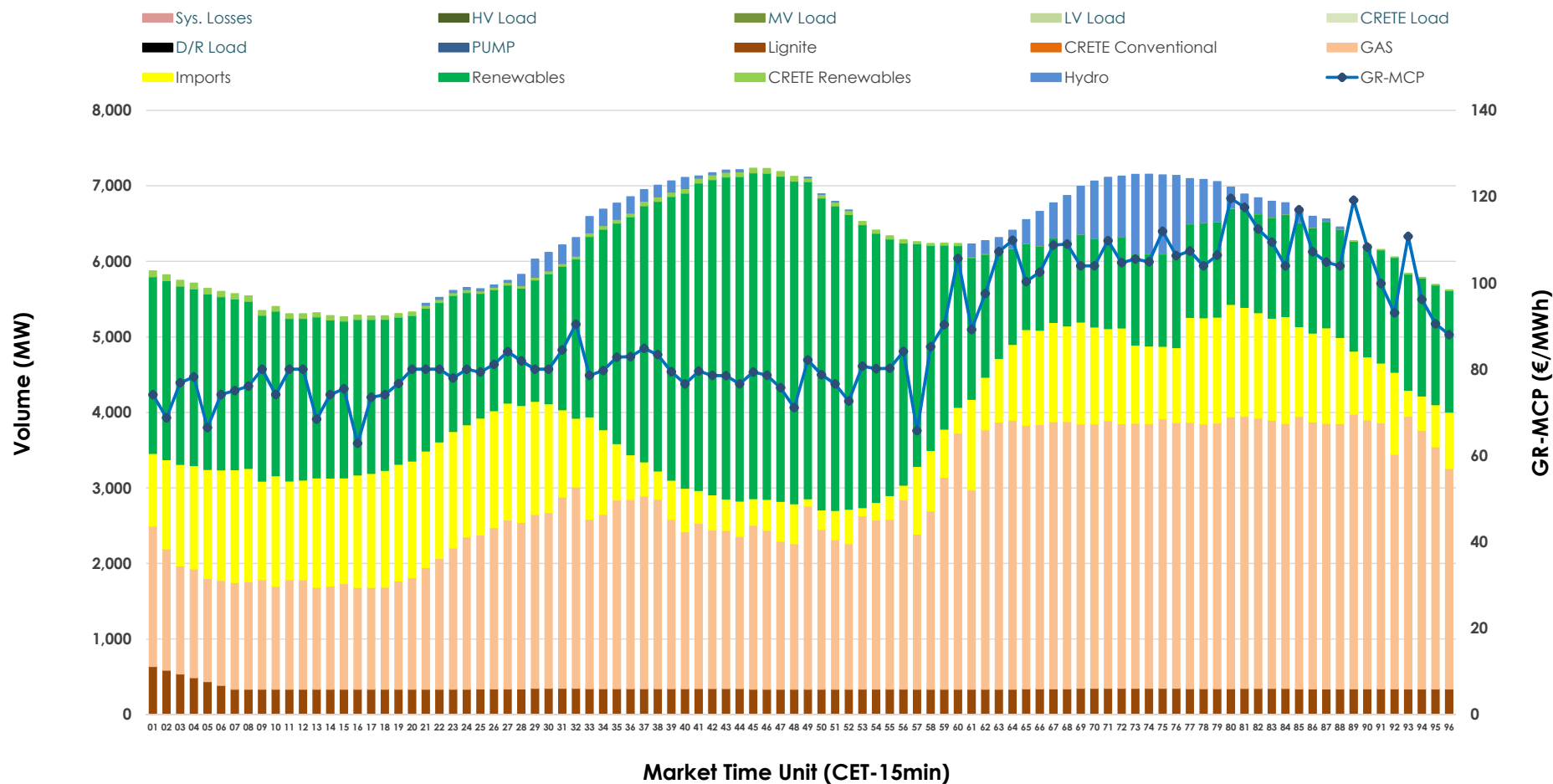


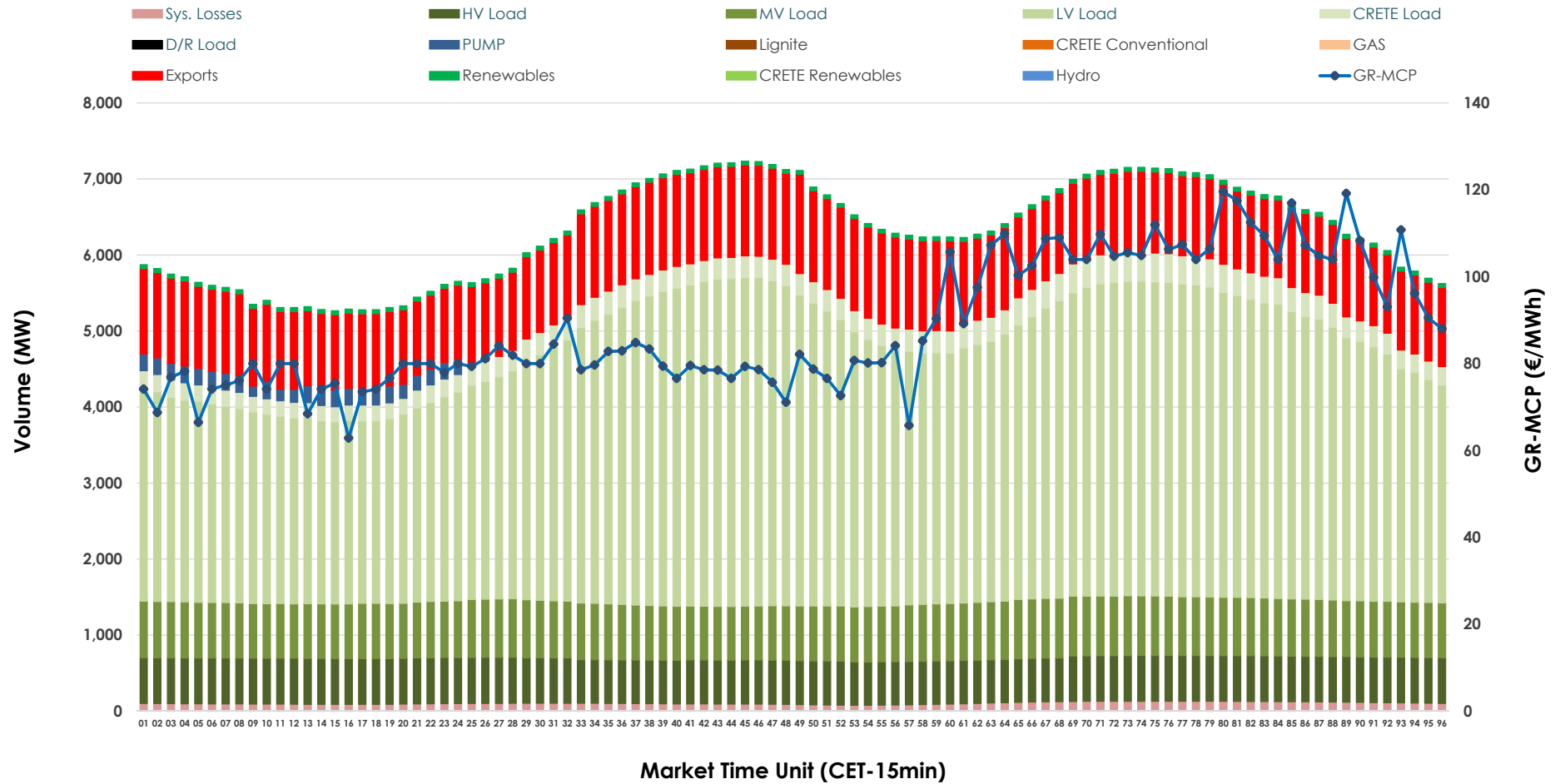


Day-Ahead Market Outlook

25.12.2025 Day-Ahead Market - Sell



25.12.2025 Day-Ahead Market - Buy



GR Bidding Zone Weekly Figures

Delivery Day	19.12	20.12	21.12	22.12	23.12	24.12	25.12
	👇 -16%	👇 -16%	👇 -4%	👈 10%	👈 2%	👇 -9%	👇 -17%
Avg.MCP (€/MWh)	129.83	109.54	104.94	115.83	117.69	106.82	88.67
Max.MCP (€/MWh)	277.03	137.32	128.02	189.83	200.90	153.29	119.59
Min.MCP (€/MWh)	88.91	84.37	86.03	82.50	80.29	55.89	62.86
	👇 -3%	👈 0%	👇 -3%	👈 10%	👇 -5%	👇 -4%	👇 -13%
Tot.Vol(GWh)	354.90	355.51	345.80	379.81	362.34	347.64	303.98

Trades by Order Type

Delivery Day		19.12	20.12	21.12	22.12	23.12	24.12	25.12	
Ord Price Type		Sell & Buy Trades in (GWh) per Price Type							(%)
PPT	(S)	37.468	42.265	44.622	47.746	42.617	41.215	40.208	26.45%
HBD	(S)	66.138	64.970	66.469	75.580	65.580	51.304	46.075	30.31%
BLK	(S)	64.196	63.533	59.501	62.646	65.342	69.164	43.709	28.76%
CPL	(S)	9.646	6.985	2.306	3.935	7.633	12.137	22.000	14.47%
PPT	(B)	15.779	15.453	14.996	15.606	16.353	14.972	14.707	9.68%
HBD	(B)	149.373	145.723	135.059	148.119	147.779	144.502	125.254	82.41%
BLK	(B)	0.000	0.000	0.000	0.000	0.000	0.000	0.000	0.00%
CPL	(B)	12.296	16.577	22.844	26.181	17.040	14.346	12.031	7.92%
		Sell & Buy Orders Traded per Price Type							(%)
PPT	(S)	1591	1537	1576	1525	1576	1584	1454	34.99%
HBD	(S)	3233	3080	3013	3105	3071	2854	2689	64.72%
BLK	(S)	16	20	20	21	19	24	12	0.29%
PPT	(B)	2314	2332	2338	2377	2390	2315	2366	36.27%
HBD	(B)	4216	4193	4109	4130	4341	4078	4157	63.73%
BLK	(B)	0	0	0	0	0	0	0	0.00%

MCP	Market Clearing Price (€/MWh)
PPT	Priority Price-Taking
HBD	Hybrid
BLK	Block
CPL	Market Coupling Flow

Trade's Volume Mix

		Sell - MWh	Buy - MWh	
Lignite	(5.5%)	8,416	0	(0.0%)
Crete Conv.	(0.0%)	0	0	(0.0%)
Gas	(40.0%)	60,796	0	(0.0%)
Hydro	(2.6%)	3,920	0	(0.0%)
Imports	(16.3%)	24,780		
RES	(35.0%)	53,247	1,204	(0.8%)
Crete RES	(0.5%)	834	0	(0.0%)
HV Load	(0.0%)	0	14,187	(9.3%)
MV Load	(0.0%)	0	17,824	(11.7%)
LV Load	(0.0%)	0	82,028	(54.0%)
Crete Load	(0.0%)	0	6,862	(4.5%)
Pumping	(0.0%)	0	1,246	(0.8%)
Exports			26,140	(17.2%)
Sys.Losses	(0.0%)	0	2,502	(1.6%)
D/R Load	(0.0%)	0	0	(0.0%)

