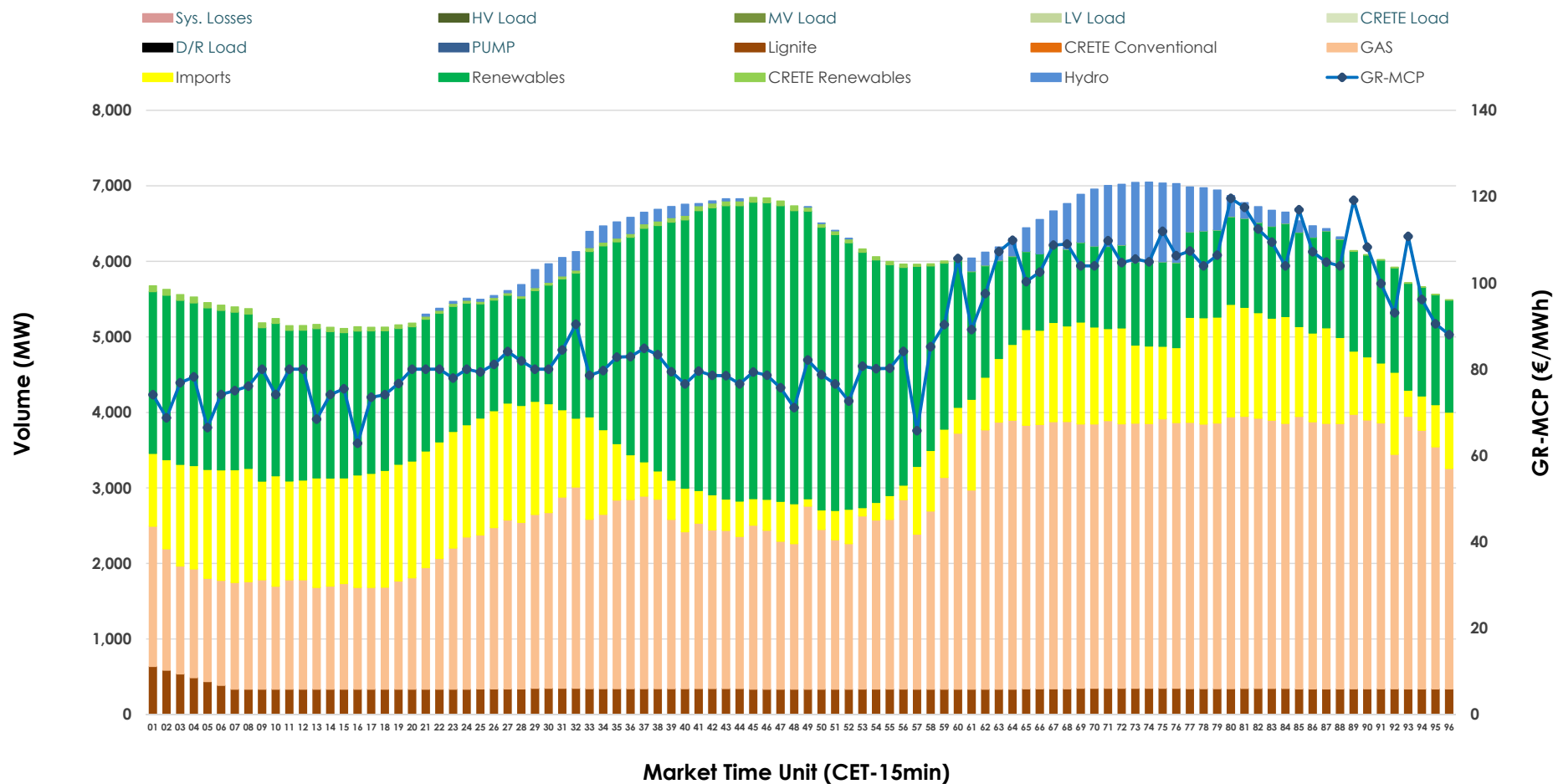


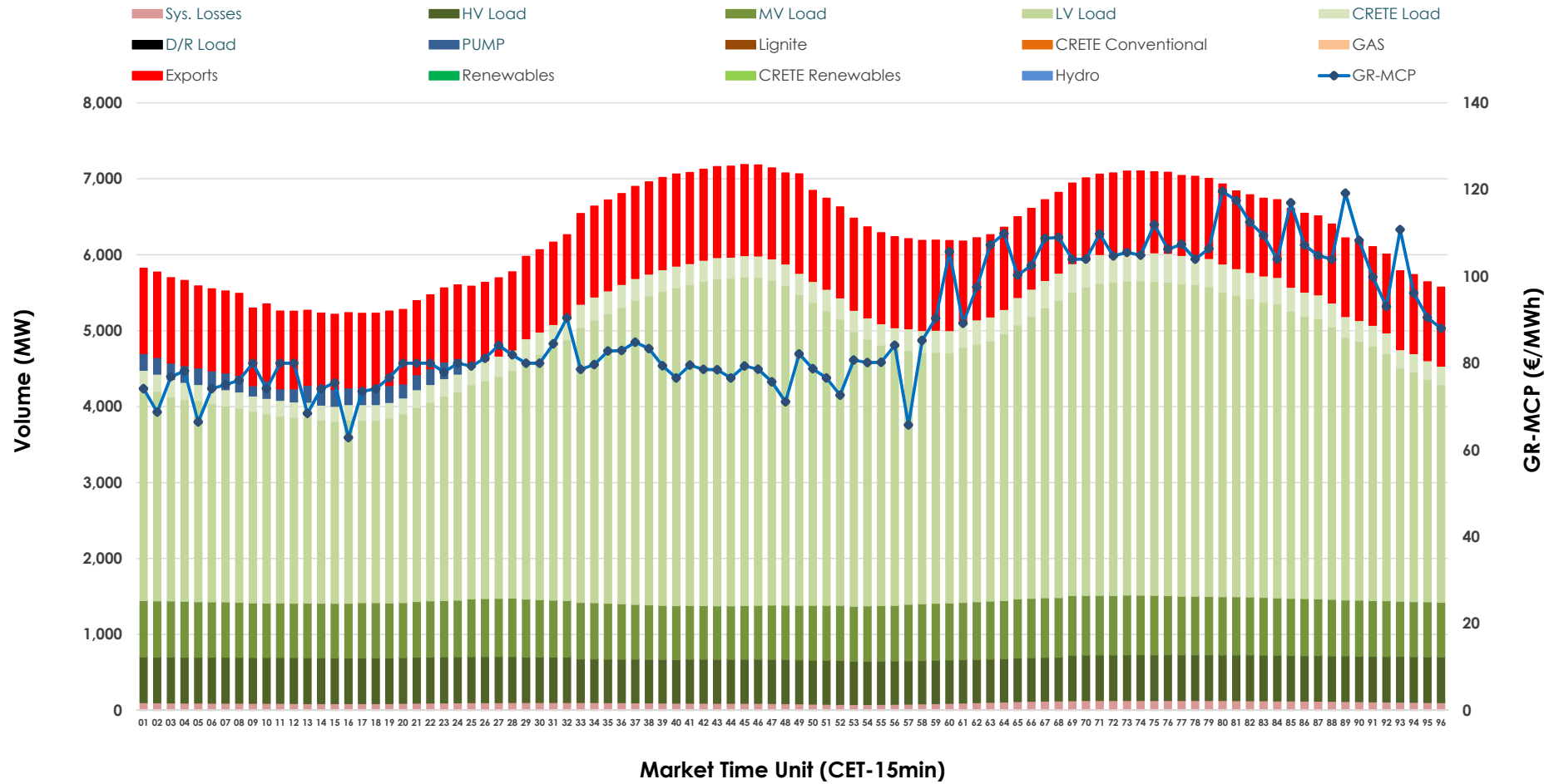


## Day-Ahead Market Outlook

25.12.2025 Day-Ahead Market - Sell



## 25.12.2025 Day-Ahead Market - Buy



### GR Bidding Zone Weekly Figures

Delivery Day	19.12	20.12	21.12	22.12	23.12	24.12	25.12
	👇 -16%	👇 -16%	👇 -4%	👈 10%	👈 2%	👇 -9%	👇 -17%
<b>Avg.MCP (€/MWh)</b>	129.83	109.54	104.94	115.83	117.69	106.82	88.67
<b>Max.MCP (€/MWh)</b>	277.03	137.32	128.02	189.83	200.90	153.29	119.59
<b>Min.MCP (€/MWh)</b>	88.91	84.37	86.03	82.50	80.29	55.89	62.86
	👇 -3%	👈 0%	👇 -3%	👈 10%	👇 -5%	👇 -4%	👇 -13%
<b>Tot.Vol(GWh)</b>	354.90	355.51	345.80	379.81	362.34	347.64	303.98

### Trades by Order Type

Delivery Day		19.12	20.12	21.12	22.12	23.12	24.12	25.12	
Ord Price Type		Sell & Buy Trades in (GWh) per Price Type							(%)
<b>PPT</b>	(S)	37.468	42.265	44.622	47.746	42.617	41.215	40.208	26.45%
<b>HBD</b>	(S)	66.138	64.970	66.469	75.580	65.580	51.304	46.075	30.31%
<b>BLK</b>	(S)	64.196	63.533	59.501	62.646	65.342	69.164	43.709	28.76%
<b>CPL</b>	(S)	9.646	6.985	2.306	3.935	7.633	12.137	22.000	14.47%
<b>PPT</b>	(B)	15.779	15.453	14.996	15.606	16.353	14.972	14.707	9.68%
<b>HBD</b>	(B)	149.373	145.723	135.059	148.119	147.779	144.502	125.254	82.41%
<b>BLK</b>	(B)	0.000	0.000	0.000	0.000	0.000	0.000	0.000	0.00%
<b>CPL</b>	(B)	12.296	16.577	22.844	26.181	17.040	14.346	12.031	7.92%
		Sell & Buy Orders Traded per Price Type							(%)
<b>PPT</b>	(S)	1591	1537	1576	1525	1576	1584	1454	34.99%
<b>HBD</b>	(S)	3233	3080	3013	3105	3071	2854	2689	64.72%
<b>BLK</b>	(S)	16	20	20	21	19	24	12	0.29%
<b>PPT</b>	(B)	2314	2332	2338	2377	2390	2315	2366	36.27%
<b>HBD</b>	(B)	4216	4193	4109	4130	4341	4078	4157	63.73%
<b>BLK</b>	(B)	0	0	0	0	0	0	0	0.00%

<b>MCP</b>	Market Clearing Price (€/MWh)
<b>PPT</b>	Priority Price-Taking
<b>HBD</b>	Hybrid
<b>BLK</b>	Block
<b>CPL</b>	Market Coupling Flow

### Trade's Volume Mix

		Sell - MWh	Buy - MWh	
<b>Lignite</b>	(5.7%)	8,416	0	(0.0%)
<b>Crete Conv.</b>	(0.0%)	0	0	(0.0%)
<b>Gas</b>	(41.3%)	60,796	0	(0.0%)
<b>Hydro</b>	(2.7%)	3,920	0	(0.0%)
<b>Imports</b>	(16.8%)	24,780		
<b>RES</b>	(33.0%)	48,590	0	(0.0%)
<b>Crete RES</b>	(0.6%)	834	0	(0.0%)
<b>HV Load</b>	(0.0%)	0	14,187	(9.4%)
<b>MV Load</b>	(0.0%)	0	17,824	(11.8%)
<b>LV Load</b>	(0.0%)	0	82,028	(54.4%)
<b>Crete Load</b>	(0.0%)	0	6,862	(4.6%)
<b>Pumping</b>	(0.0%)	0	1,246	(0.8%)
<b>Exports</b>			26,140	(17.3%)
<b>Sys.Losses</b>	(0.0%)	0	2,502	(1.7%)
<b>D/R Load</b>	(0.0%)	0	0	(0.0%)

