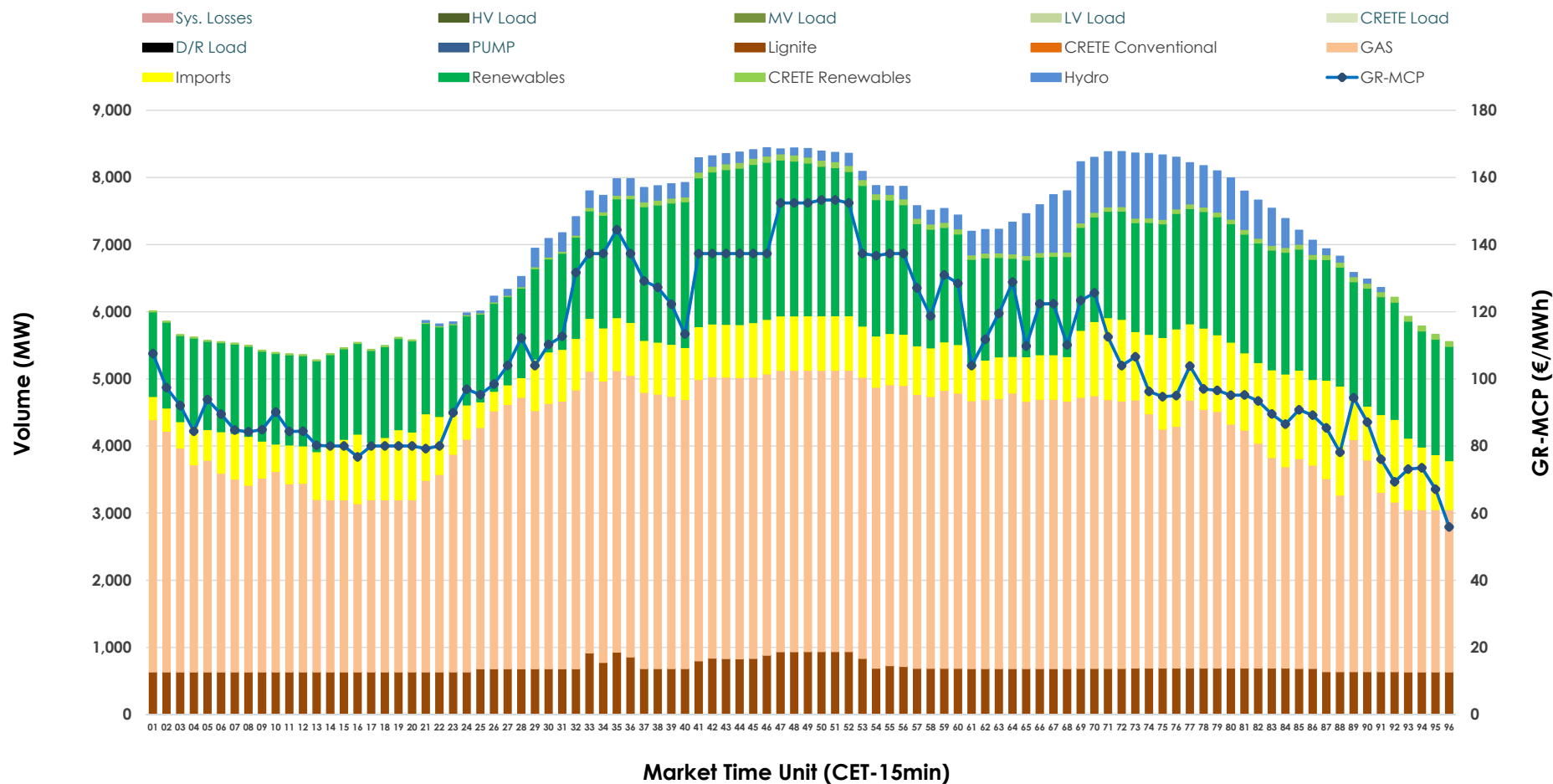


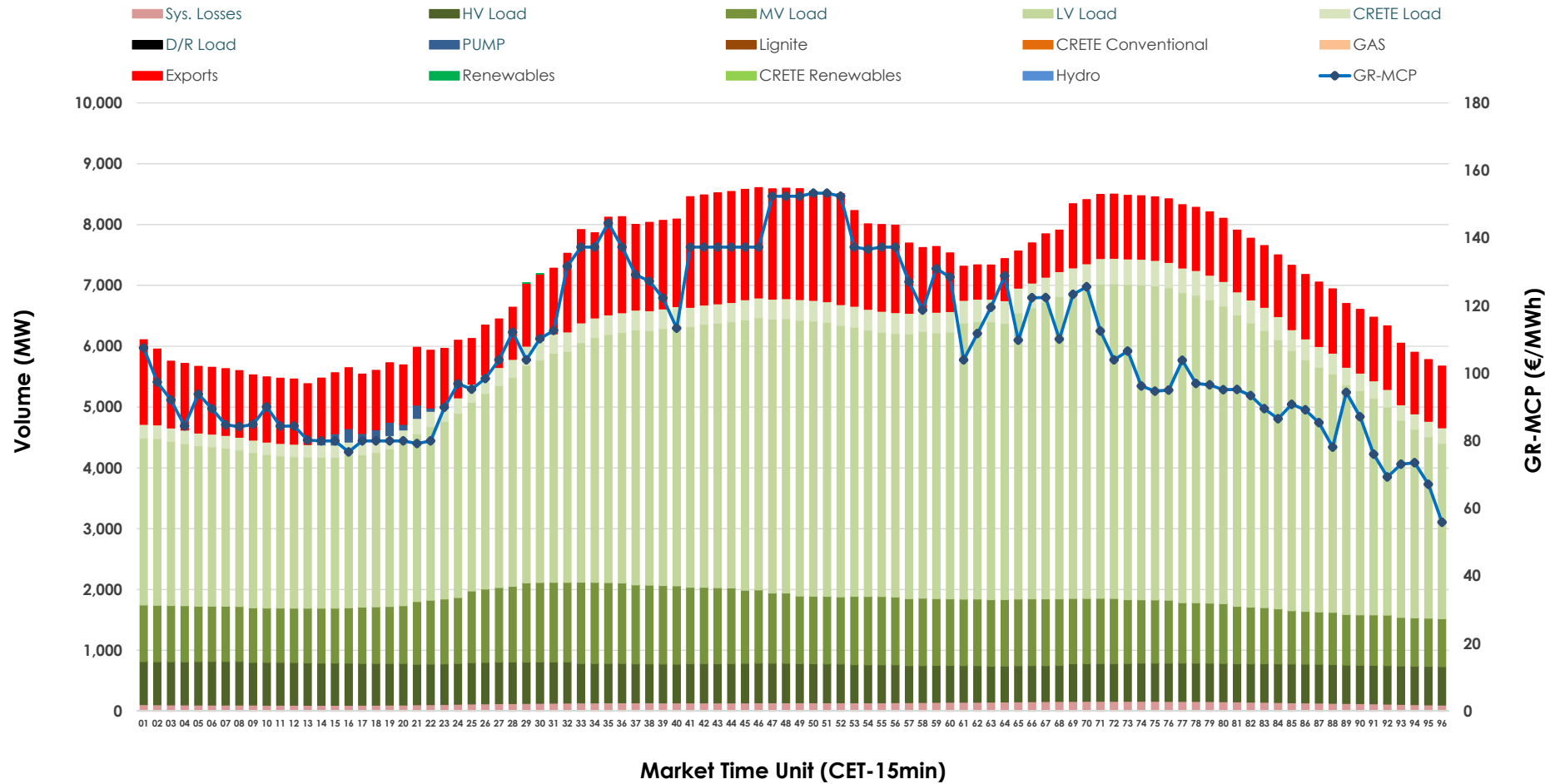


## Day-Ahead Market Outlook

24.12.2025 Day-Ahead Market - Sell



## 24.12.2025 Day-Ahead Market - Buy



### GR Bidding Zone Weekly Figures

Delivery Day	18.12	19.12	20.12	21.12	22.12	23.12	24.12
	↗ 29%	↘ -16%	↘ -16%	↘ -4%	↗ 10%	↗ 2%	↘ -9%
Avg.MCP (€/MWh)	155.30	129.83	109.54	104.94	115.83	117.69	106.82
Max.MCP (€/MWh)	282.28	277.03	137.32	128.02	189.83	200.90	153.29
Min.MCP (€/MWh)	94.82	88.91	84.37	86.03	82.50	80.29	55.89
	↘ -2%	↘ -3%	→ 0%	↘ -3%	↗ 10%	↘ -5%	↘ -4%
Tot.Vol(GWh)	366.73	354.90	355.51	345.80	379.81	362.34	347.64

### Trades by Order Type

Delivery Day		18.12	19.12	20.12	21.12	22.12	23.12	24.12	
Ord Price Type		Sell & Buy Trades in (GWh) per Price Type							(%)
PPT	(S)	37.047	37.468	42.265	44.622	47.746	42.617	41.215	23.71%
HBD	(S)	69.393	66.138	64.970	66.469	75.580	65.580	51.304	29.52%
BLK	(S)	68.977	64.196	63.533	59.501	62.646	65.342	69.164	39.79%
CPL	(S)	7.946	9.646	6.985	2.306	3.935	7.633	12.137	6.98%
PPT	(B)	16.030	15.779	15.453	14.996	15.606	16.353	14.972	8.61%
HBD	(B)	150.462	149.373	145.723	135.059	148.119	147.779	144.502	83.13%
BLK	(B)	0.000	0.000	0.000	0.000	0.000	0.000	0.000	0.00%
CPL	(B)	16.873	12.296	16.577	22.844	26.181	17.040	14.346	8.25%
		Sell & Buy Orders Traded per Price Type							(%)
PPT	(S)	1542	1591	1537	1576	1525	1576	1584	35.50%
HBD	(S)	3251	3233	3080	3013	3105	3071	2854	63.96%
BLK	(S)	21	16	20	20	21	19	24	0.54%
PPT	(B)	2343	2314	2332	2338	2377	2390	2315	36.21%
HBD	(B)	4199	4216	4193	4109	4130	4341	4078	63.79%
BLK	(B)	0	0	0	0	0	0	0	0.00%

<b>MCP</b>	Market Clearing Price (€/MWh)
<b>PPT</b>	Priority Price-Taking
<b>HBD</b>	Hybrid
<b>BLK</b>	Block
<b>CPL</b>	Market Coupling Flow

### Trade's Volume Mix

		Sell - MWh	Buy - MWh	
Lignite	(9.9%)	16,889	0	(0.0%)
Crete Conv.	(0.0%)	0	0	(0.0%)
Gas	(50.4%)	85,620	0	(0.0%)
Hydro	(3.4%)	5,828	0	(0.0%)
Imports	(11.8%)	19,973		
RES	(23.6%)	40,098	1	(0.0%)
Crete RES	(0.8%)	1,345	0	(0.0%)
HV Load	(0.0%)	0	15,579	(9.0%)
MV Load	(0.0%)	0	25,251	(14.6%)
LV Load	(0.0%)	0	93,088	(53.9%)
Crete Load	(0.0%)	0	7,562	(4.4%)
Pumping	(0.0%)	0	345	(0.2%)
Exports			27,640	(16.0%)
Sys.Losses	(0.0%)	0	3,159	(1.8%)
D/R Load	(0.0%)	0	0	(0.0%)

