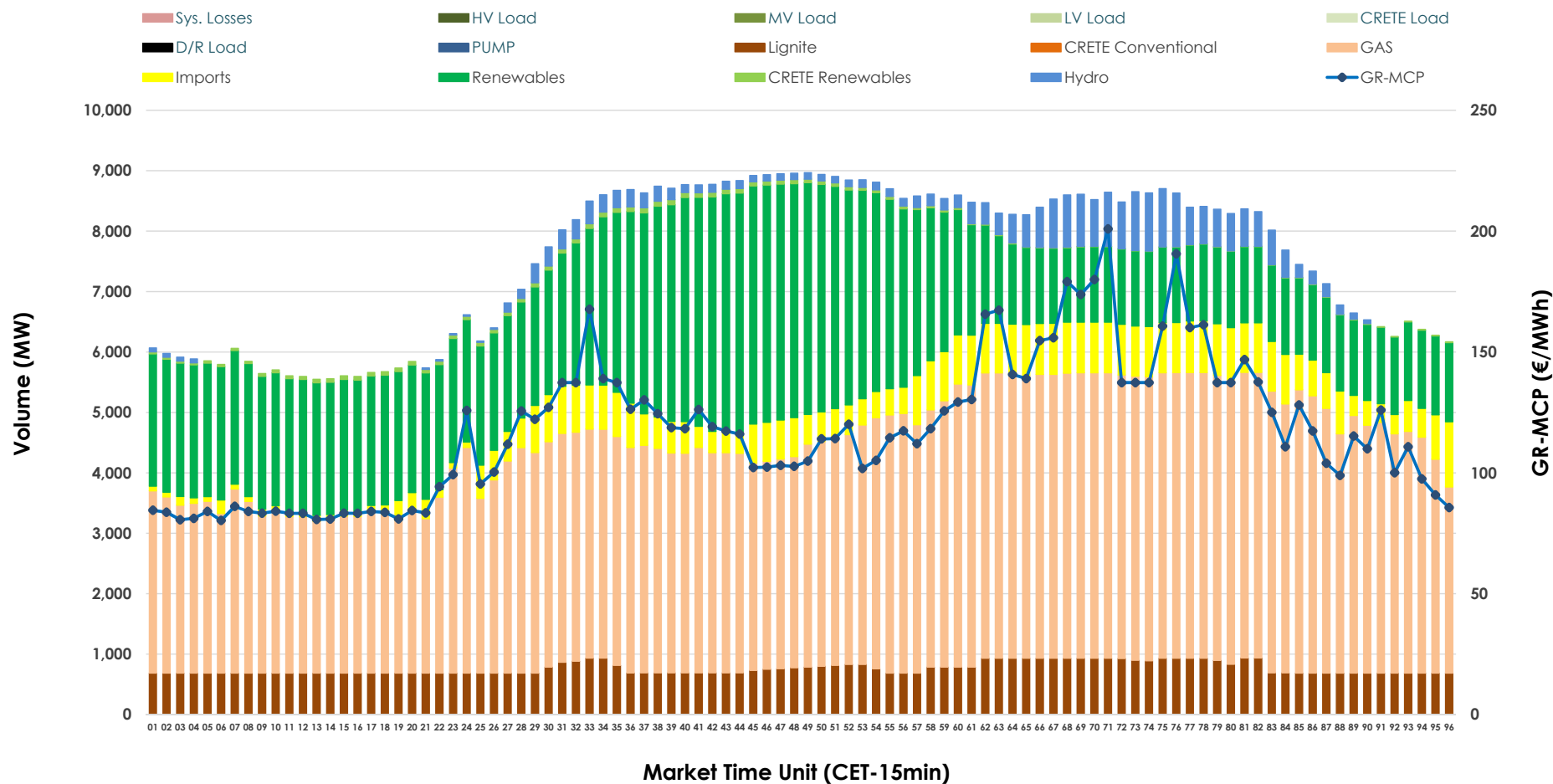


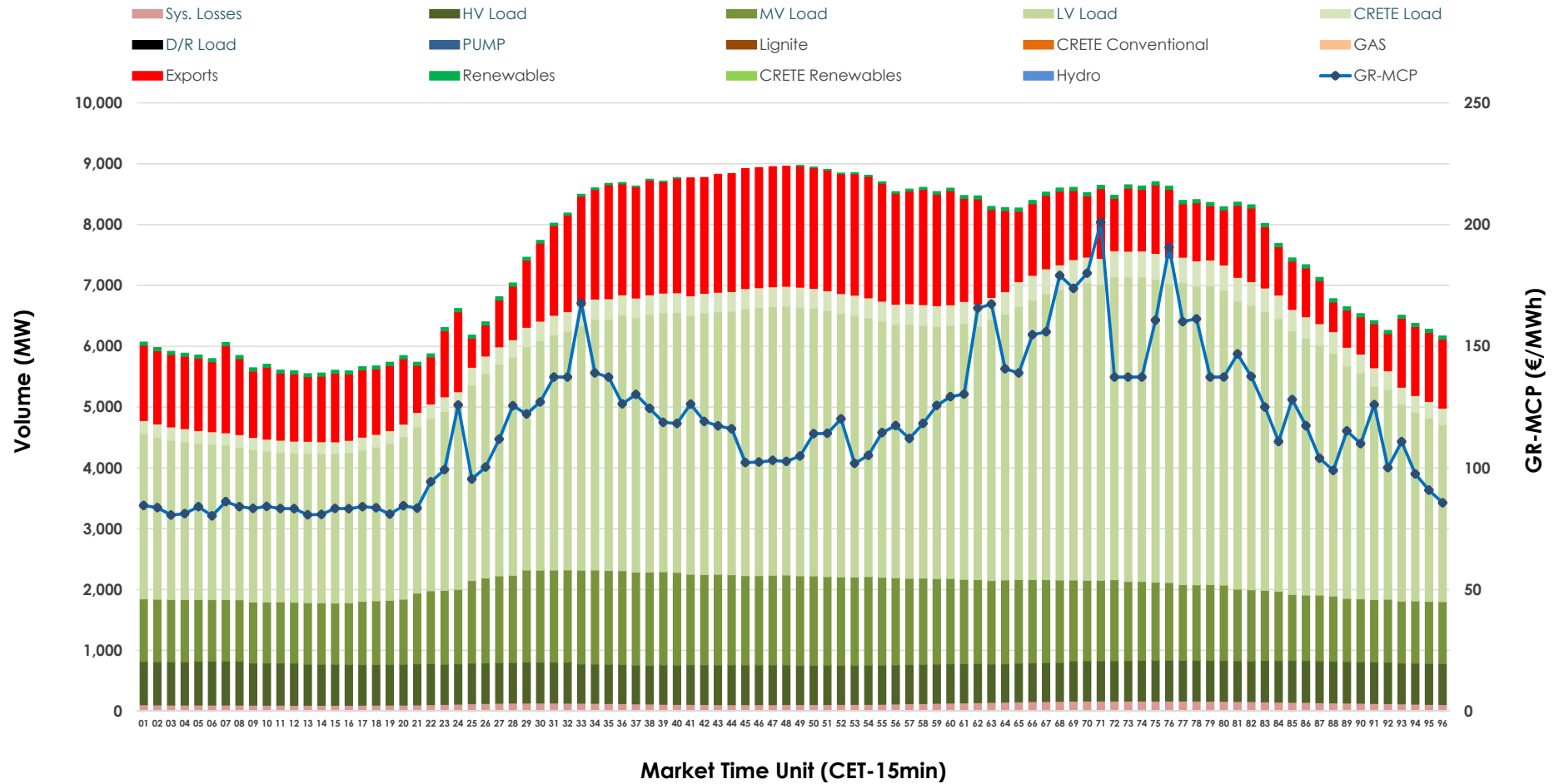


Day-Ahead Market Outlook

23.12.2025 Day-Ahead Market - Sell



23.12.2025 Day-Ahead Market - Buy



GR Bidding Zone Weekly Figures

Delivery Day	17.12	18.12	19.12	20.12	21.12	22.12	23.12
	⬇️ -8%	⬆️ 29%	⬇️ -16%	⬇️ -16%	⬇️ -4%	⬆️ 10%	⬆️ 2%
Avg.MCP (€/MWh)	120.01	155.30	129.83	109.54	104.94	115.83	117.69
Max.MCP (€/MWh)	194.02	282.28	277.03	137.32	128.02	189.83	200.90
Min.MCP (€/MWh)	79.63	94.82	88.91	84.37	86.03	82.50	80.29
	➡️ 1%	⬇️ -2%	⬇️ -3%	➡️ 0%	⬇️ -3%	⬆️ 10%	⬇️ -5%
Tot.Vol(GWh)	374.02	366.73	354.90	355.51	345.80	379.81	362.34

Trades by Order Type

Delivery Day		17.12	18.12	19.12	20.12	21.12	22.12	23.12	
Ord Price Type		Sell & Buy Trades in (GWh) per Price Type							(%)
PPT	(S)	50.539	37.047	37.468	42.265	44.622	47.746	42.617	23.52%
HBD	(S)	69.544	69.393	66.138	64.970	66.469	75.580	65.580	36.20%
BLK	(S)	61.995	68.977	64.196	63.533	59.501	62.646	65.342	36.07%
CPL	(S)	4.933	7.946	9.646	6.985	2.306	3.935	7.633	4.21%
PPT	(B)	15.114	16.030	15.779	15.453	14.996	15.606	16.353	9.03%
HBD	(B)	149.301	150.462	149.373	145.723	135.059	148.119	147.779	81.57%
BLK	(B)	0.000	0.000	0.000	0.000	0.000	0.000	0.000	0.00%
CPL	(B)	22.596	16.873	12.296	16.577	22.844	26.181	17.040	9.41%
		Sell & Buy Orders Traded per Price Type							(%)
PPT	(S)	1747	1542	1591	1537	1576	1525	1576	33.78%
HBD	(S)	2845	3251	3233	3080	3013	3105	3071	65.82%
BLK	(S)	21	21	16	20	20	21	19	0.41%
PPT	(B)	2288	2343	2314	2332	2338	2377	2390	35.51%
HBD	(B)	4287	4199	4216	4193	4109	4130	4341	64.49%
BLK	(B)	0	0	0	0	0	0	0	0.00%

MCP	Market Clearing Price (€/MWh)
PPT	Priority Price-Taking
HBD	Hybrid
BLK	Block
CPL	Market Coupling Flow

Trade's Volume Mix

		Sell - MWh	Buy - MWh	
Lignite	(10.1%)	18,311	0	(0.0%)
Crete Conv.	(0.0%)	0	0	(0.0%)
Gas	(50.2%)	90,998	0	(0.0%)
Hydro	(3.3%)	5,960	0	(0.0%)
Imports	(7.0%)	12,713		
RES	(28.8%)	52,243	938	(0.5%)
Crete RES	(0.5%)	948	0	(0.0%)
HV Load	(0.0%)	0	15,976	(8.8%)
MV Load	(0.0%)	0	30,483	(16.8%)
LV Load	(0.0%)	0	91,758	(50.6%)
Crete Load	(0.0%)	0	7,579	(4.2%)
Pumping	(0.0%)	0	0	(0.0%)
Exports			31,389	(17.3%)
Sys.Losses	(0.0%)	0	3,049	(1.7%)
D/R Load	(0.0%)	0	0	(0.0%)

