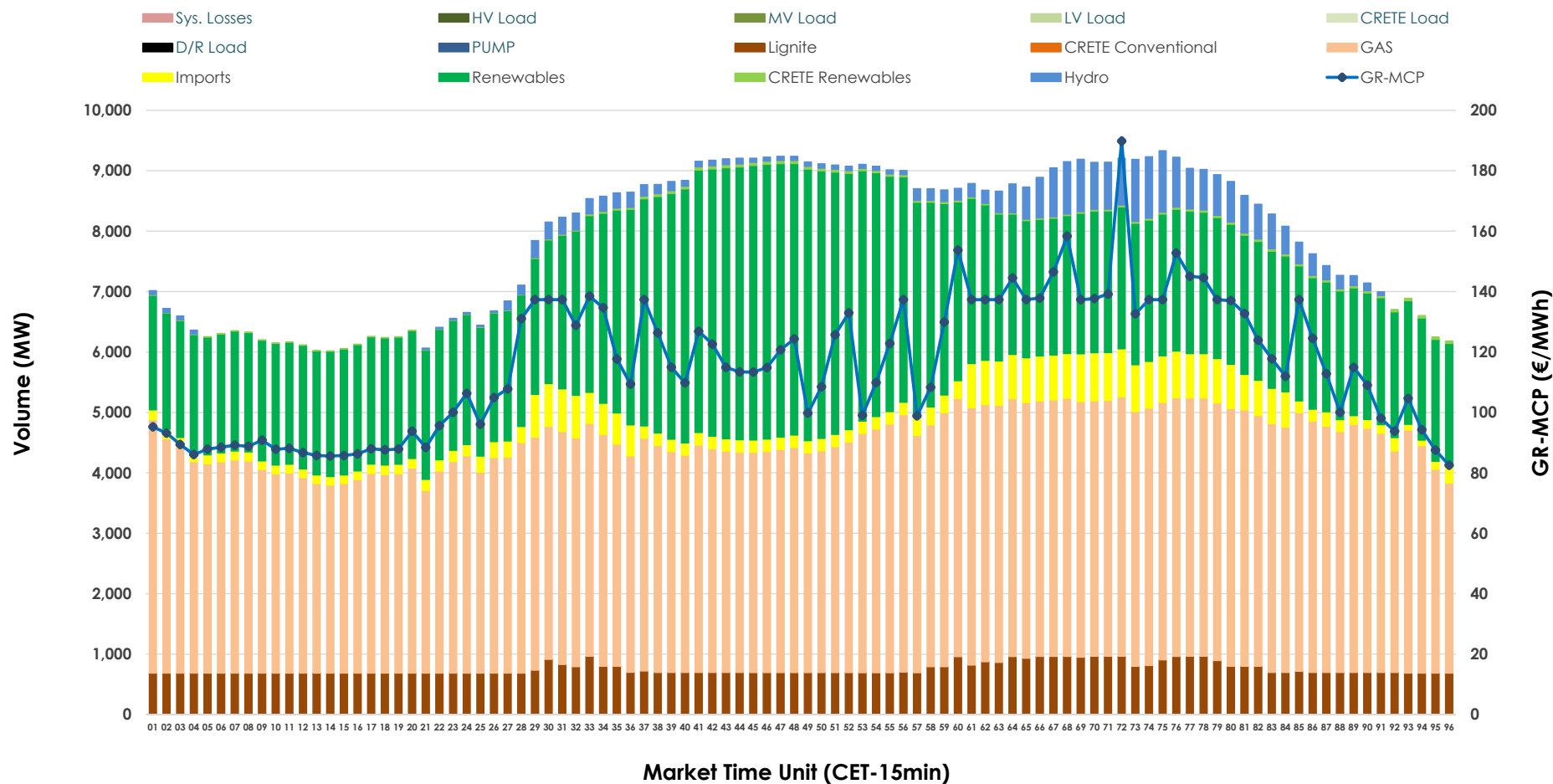


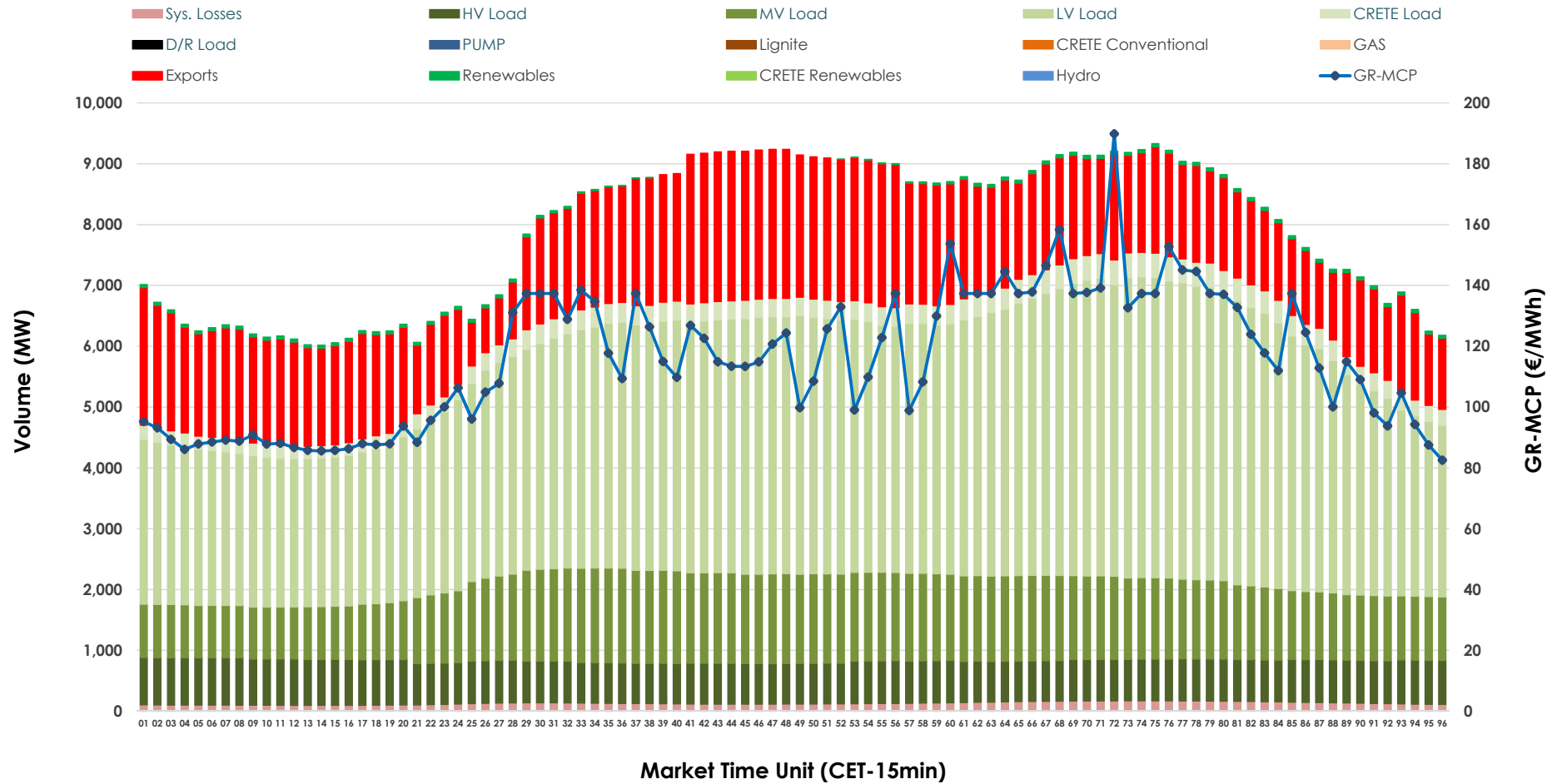


Day-Ahead Market Outlook

22.12.2025 Day-Ahead Market - Sell



22.12.2025 Day-Ahead Market - Buy



GR Bidding Zone Weekly Figures

Delivery Day	16.12	17.12	18.12	19.12	20.12	21.12	22.12
	↗ 12%	↘ -8%	↗ 29%	↘ -16%	↘ -16%	↘ -4%	↗ 10%
Avg.MCP (€/MWh)	130.63	120.01	155.30	129.83	109.54	104.94	115.83
Max.MCP (€/MWh)	252.89	194.02	282.28	277.03	137.32	128.02	189.83
Min.MCP (€/MWh)	78.05	79.63	94.82	88.91	84.37	86.03	82.50
	↗ 1%	➡ 1%	↘ -2%	↘ -3%	➡ 0%	↘ -3%	↗ 10%
Tot.Vol(GWh)	371.46	374.02	366.73	354.90	355.51	345.80	379.81

Trades by Order Type

Delivery Day		16.12	17.12	18.12	19.12	20.12	21.12	22.12	
Ord Price Type		Sell & Buy Trades in (GWh) per Price Type							(%)
PPT	(S)	50.507	50.539	37.047	37.468	42.265	44.622	47.746	25.14%
HBD	(S)	71.446	69.544	69.393	66.138	64.970	66.469	75.580	39.80%
BLK	(S)	60.239	61.995	68.977	64.196	63.533	59.501	62.646	32.99%
CPL	(S)	3.536	4.933	7.946	9.646	6.985	2.306	3.935	2.07%
PPT	(B)	14.711	15.114	16.030	15.779	15.453	14.996	15.606	8.22%
HBD	(B)	150.730	149.301	150.462	149.373	145.723	135.059	148.119	78.00%
BLK	(B)	0.000	0.000	0.000	0.000	0.000	0.000	0.000	0.00%
CPL	(B)	20.288	22.596	16.873	12.296	16.577	22.844	26.181	13.79%
		Sell & Buy Orders Traded per Price Type							(%)
PPT	(S)	1727	1747	1542	1591	1537	1576	1525	32.79%
HBD	(S)	2798	2845	3251	3233	3080	3013	3105	66.76%
BLK	(S)	18	21	21	16	20	20	21	0.45%
PPT	(B)	2302	2288	2343	2314	2332	2338	2377	36.53%
HBD	(B)	4222	4287	4199	4216	4193	4109	4130	63.47%
BLK	(B)	0	0	0	0	0	0	0	0.00%

MCP	Market Clearing Price (€/MWh)
PPT	Priority Price-Taking
HBD	Hybrid
BLK	Block
CPL	Market Coupling Flow

Trade's Volume Mix

		Sell - MWh	Buy - MWh	
Lignite	(9.5%)	18,109	0	(0.0%)
Crete Conv.	(0.0%)	0	0	(0.0%)
Gas	(48.3%)	91,715	0	(0.0%)
Hydro	(3.0%)	5,751	0	(0.0%)
Imports	(4.5%)	8,620		
RES	(34.2%)	65,024	910	(0.5%)
Crete RES	(0.4%)	688	0	(0.0%)
HV Load	(0.0%)	0	16,838	(8.9%)
MV Load	(0.0%)	0	30,084	(15.8%)
LV Load	(0.0%)	0	89,981	(47.4%)
Crete Load	(0.0%)	0	7,342	(3.9%)
Pumping	(0.0%)	0	0	(0.0%)
Exports			41,673	(21.9%)
Sys.Losses	(0.0%)	0	3,078	(1.6%)
D/R Load	(0.0%)	0	0	(0.0%)

