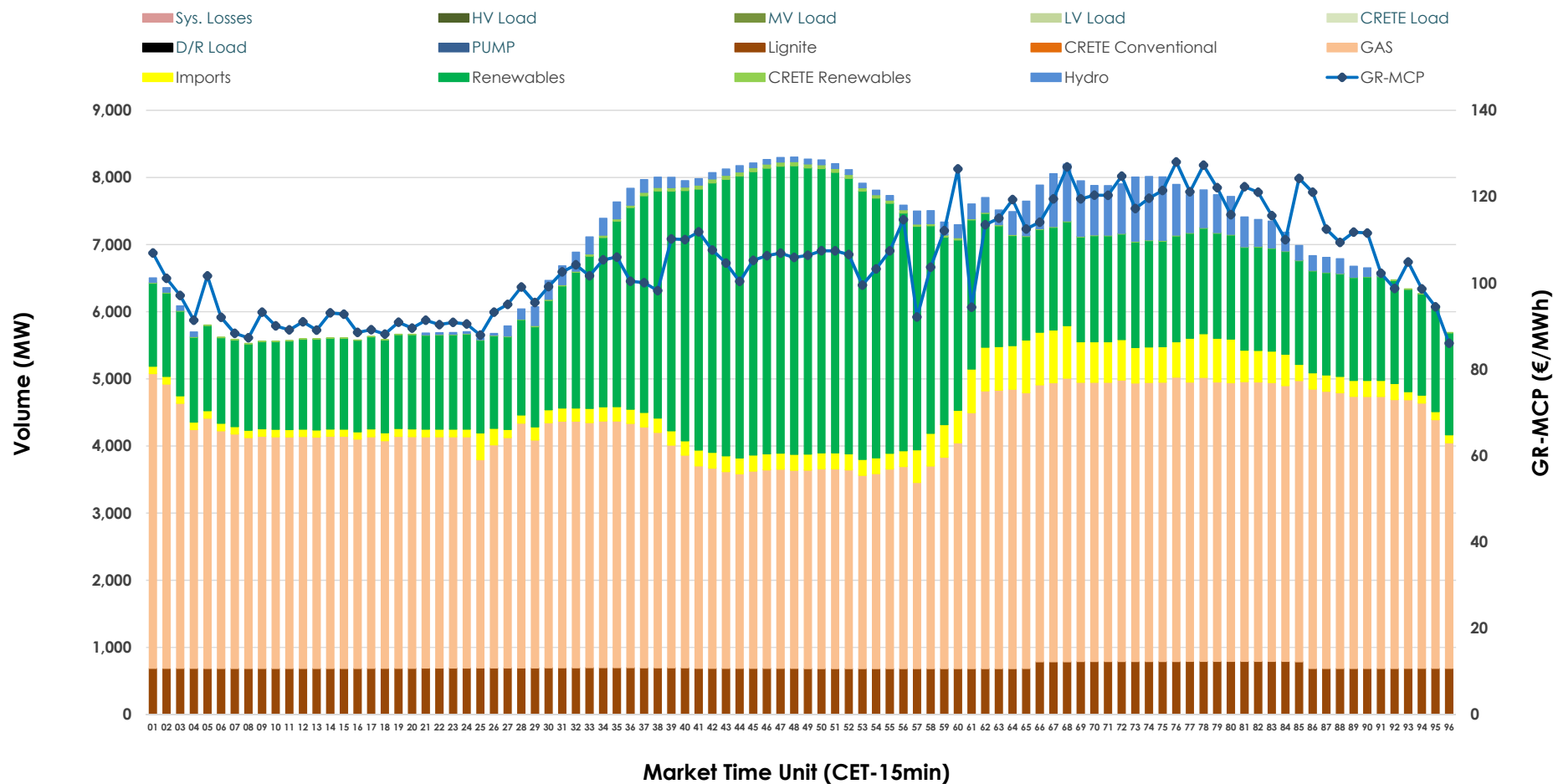


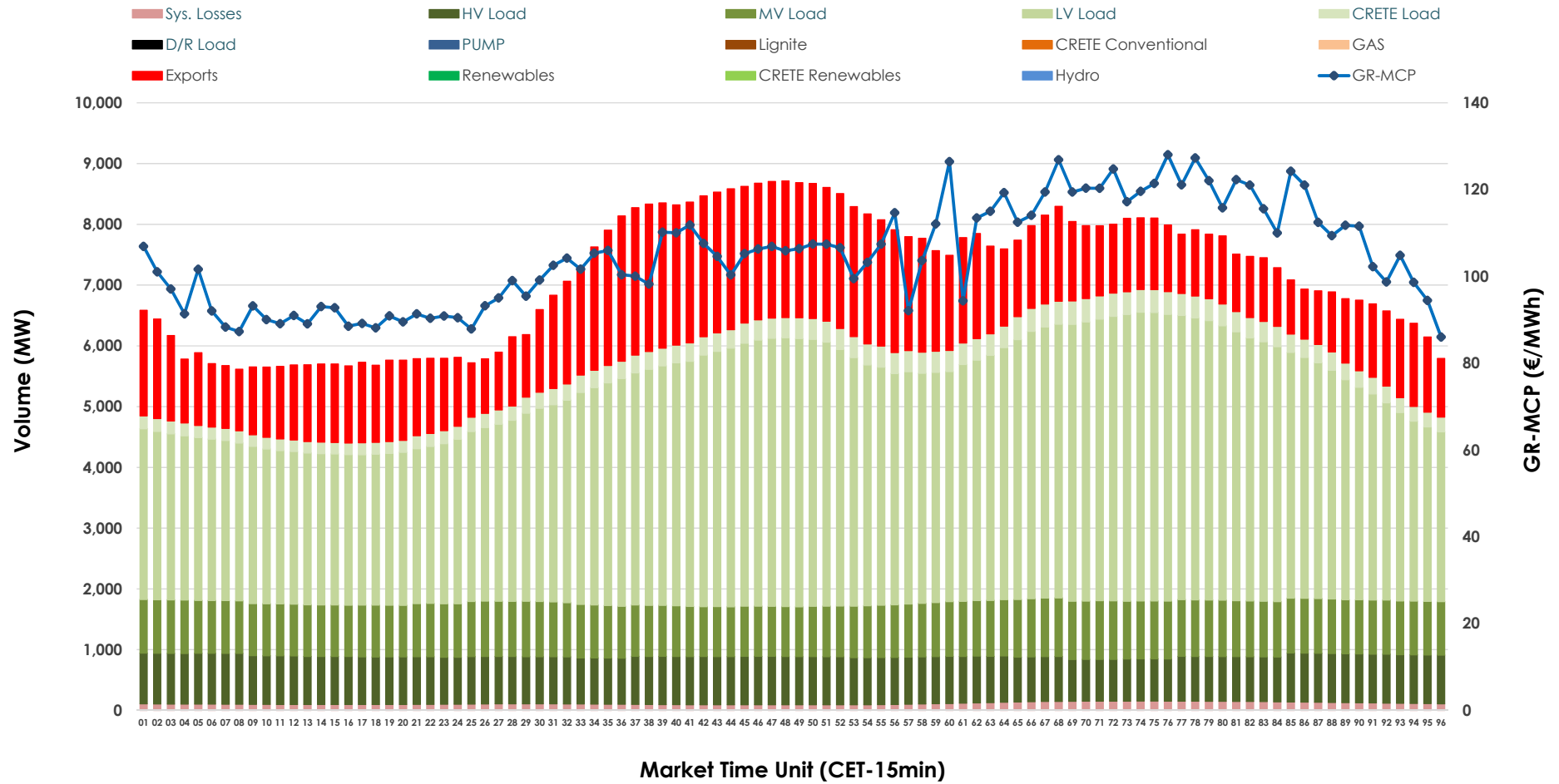


Day-Ahead Market Outlook

21.12.2025 Day-Ahead Market - Sell



21.12.2025 Day-Ahead Market - Buy



GR Bidding Zone Weekly Figures

Delivery Day	15.12	16.12	17.12	18.12	19.12	20.12	21.12
	↗ 24%	↗ 12%	↘ -8%	↗ 29%	↘ -16%	↘ -16%	↘ -4%
Avg.MCP (€/MWh)	117.02	130.63	120.01	155.30	129.83	109.54	104.94
Max.MCP (€/MWh)	212.01	252.89	194.02	282.28	277.03	137.32	128.02
Min.MCP (€/MWh)	55.00	78.05	79.63	94.82	88.91	84.37	86.03
	↗ 6%	↗ 1%	➡ 1%	↘ -2%	↘ -3%	➡ 0%	↘ -3%
Tot.Vol(GWh)	366.69	371.46	374.02	366.73	354.90	355.51	345.80

Trades by Order Type

Delivery Day		15.12	16.12	17.12	18.12	19.12	20.12	21.12	
Ord Price Type		Sell & Buy Trades in (GWh) per Price Type							(%)
PPT	(S)	57.776	50.507	50.539	37.047	37.468	42.265	44.622	25.81%
HBD	(S)	67.983	71.446	69.544	69.393	66.138	64.970	66.469	38.44%
BLK	(S)	54.767	60.239	61.995	68.977	64.196	63.533	59.501	34.41%
CPL	(S)	2.818	3.536	4.933	7.946	9.646	6.985	2.306	1.33%
PPT	(B)	15.232	14.711	15.114	16.030	15.779	15.453	14.996	8.67%
HBD	(B)	145.995	150.730	149.301	150.462	149.373	145.723	135.059	78.11%
BLK	(B)	0.000	0.000	0.000	0.000	0.000	0.000	0.000	0.00%
CPL	(B)	22.117	20.288	22.596	16.873	12.296	16.577	22.844	13.21%
		Sell & Buy Orders Traded per Price Type							(%)
PPT	(S)	1734	1727	1747	1542	1591	1537	1576	34.19%
HBD	(S)	2682	2798	2845	3251	3233	3080	3013	65.37%
BLK	(S)	26	18	21	21	16	20	20	0.43%
PPT	(B)	2322	2302	2288	2343	2314	2332	2338	36.26%
HBD	(B)	3982	4222	4287	4199	4216	4193	4109	63.74%
BLK	(B)	0	0	0	0	0	0	0	0.00%

MCP	Market Clearing Price (€/MWh)
PPT	Priority Price-Taking
HBD	Hybrid
BLK	Block
CPL	Market Coupling Flow

Trade's Volume Mix

		Sell - MWh	Buy - MWh	
Lignite	(10.2%)	17,042	0	(0.0%)
Crete Conv.	(0.0%)	0	0	(0.0%)
Gas	(51.9%)	87,128	0	(0.0%)
Hydro	(3.1%)	5,191	0	(0.0%)
Imports	(4.3%)	7,225		
RES	(30.2%)	50,742	0	(0.0%)
Crete RES	(0.3%)	512	0	(0.0%)
HV Load	(0.0%)	0	18,639	(10.8%)
MV Load	(0.0%)	0	21,229	(12.3%)
LV Load	(0.0%)	0	86,768	(50.5%)
Crete Load	(0.0%)	0	6,970	(4.1%)
Pumping	(0.0%)	0	0	(0.0%)
Exports			35,616	(20.7%)
Sys.Losses	(0.0%)	0	2,749	(1.6%)
D/R Load	(0.0%)	0	0	(0.0%)

