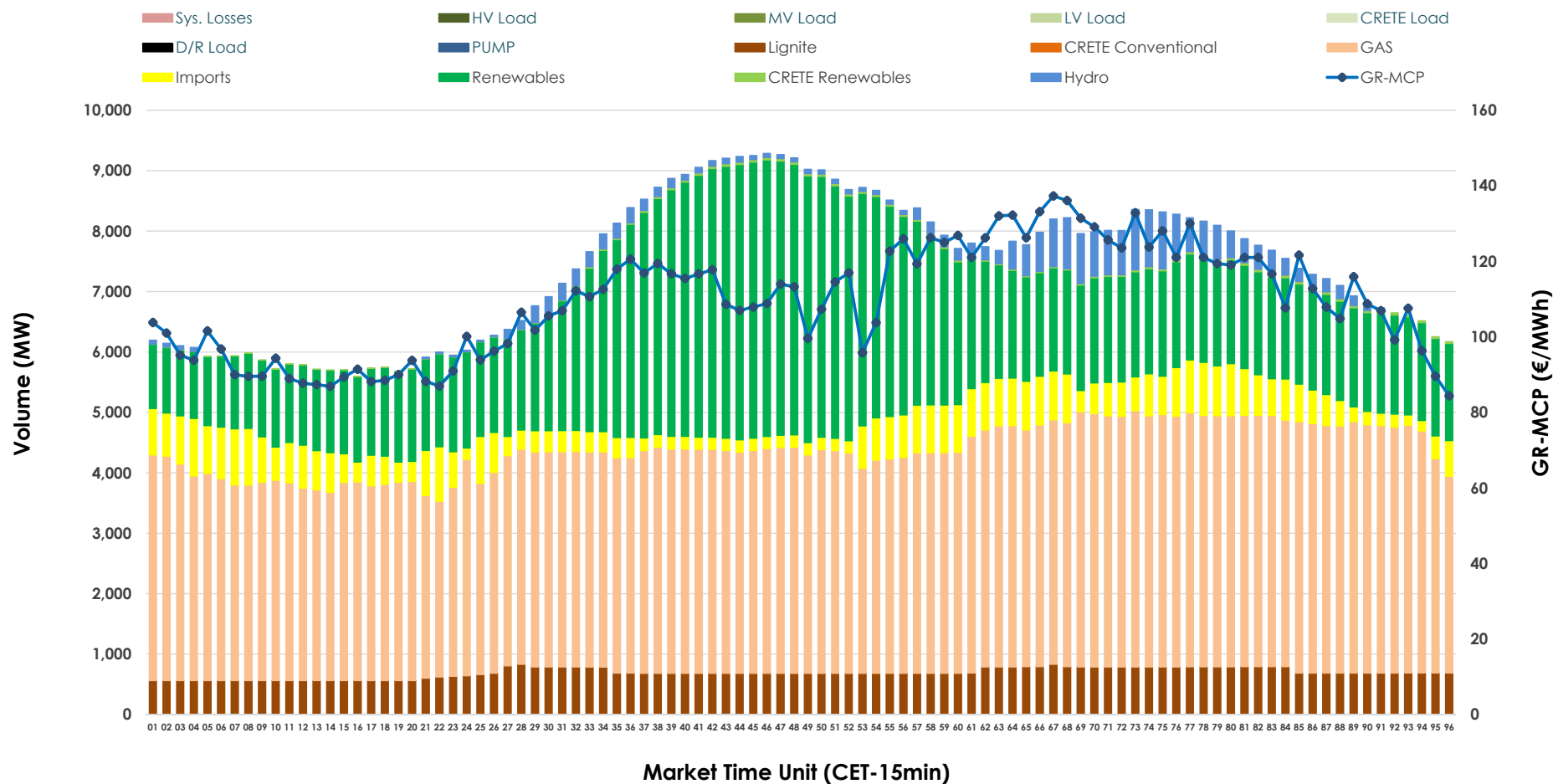


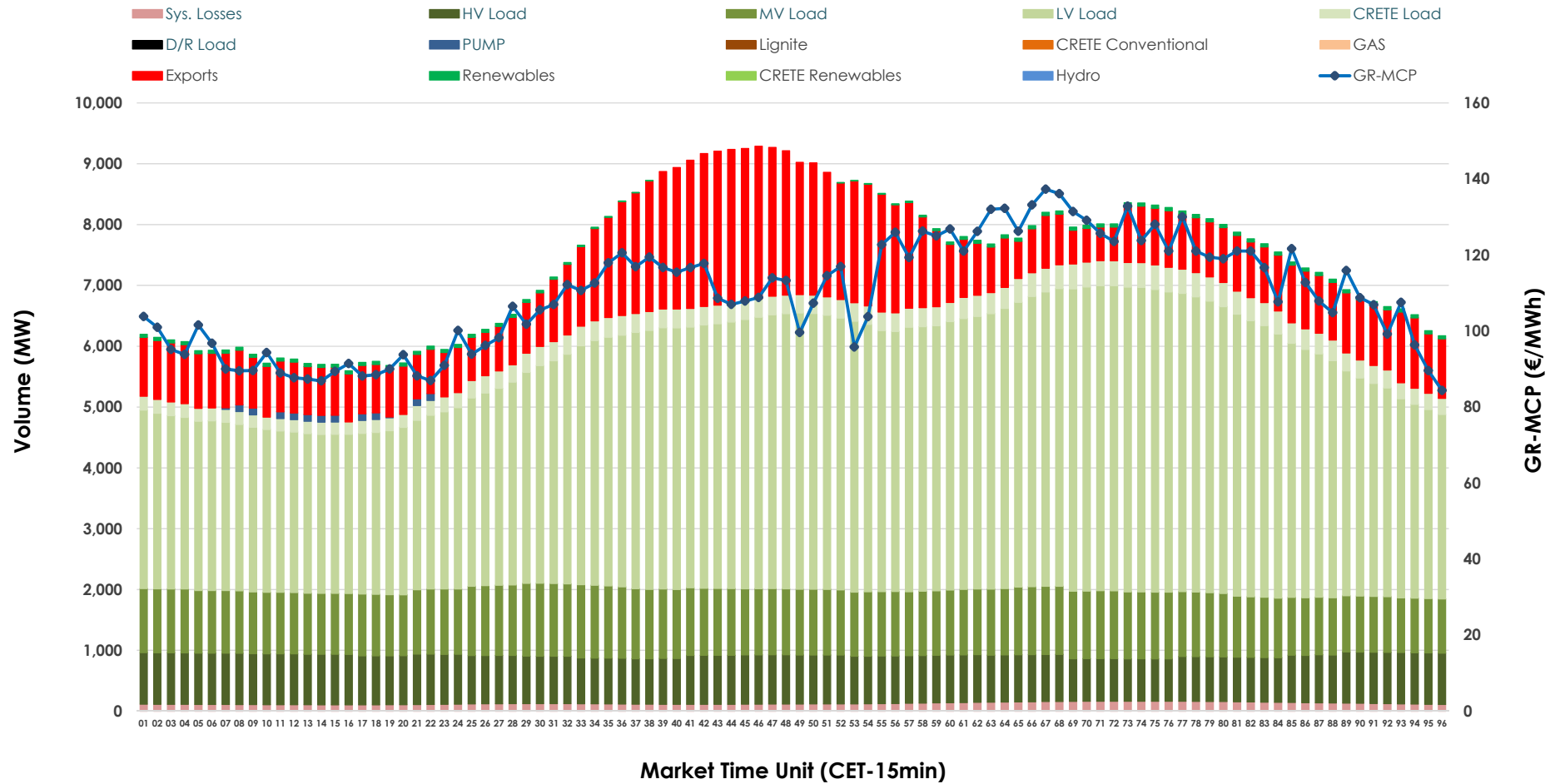


## Day-Ahead Market Outlook

20.12.2025 Day-Ahead Market - Sell



## 20.12.2025 Day-Ahead Market - Buy



### GR Bidding Zone Weekly Figures

Delivery Day	14.12	15.12	16.12	17.12	18.12	19.12	20.12
	⬇️ -7%	⬆️ 24%	⬆️ 12%	⬇️ -8%	⬆️ 29%	⬇️ -16%	⬇️ -16%
Avg.MCP (€/MWh)	94.47	117.02	130.63	120.01	155.30	129.83	109.54
Max.MCP (€/MWh)	131.52	212.01	252.89	194.02	282.28	277.03	137.32
Min.MCP (€/MWh)	15.34	55.00	78.05	79.63	94.82	88.91	84.37
	⬇️ -8%	⬆️ 6%	⬆️ 1%	➡️ 1%	⬇️ -2%	⬇️ -3%	➡️ 0%
Tot.Vol(GWh)	345.33	366.69	371.46	374.02	366.73	354.90	355.51

### Trades by Order Type

Delivery Day		14.12	15.12	16.12	17.12	18.12	19.12	20.12	
Ord Price Type		Sell & Buy Trades in (GWh) per Price Type							(%)
PPT	(S)	72.135	57.776	50.507	50.539	37.047	37.468	42.265	23.78%
HBD	(S)	57.620	67.983	71.446	69.544	69.393	66.138	64.970	36.55%
BLK	(S)	41.476	54.767	60.239	61.995	68.977	64.196	63.533	35.74%
CPL	(S)	1.432	2.818	3.536	4.933	7.946	9.646	6.985	3.93%
PPT	(B)	12.717	15.232	14.711	15.114	16.030	15.779	15.453	8.69%
HBD	(B)	134.764	145.995	150.730	149.301	150.462	149.373	145.723	81.98%
BLK	(B)	0.000	0.000	0.000	0.000	0.000	0.000	0.000	0.00%
CPL	(B)	25.183	22.117	20.288	22.596	16.873	12.296	16.577	9.33%
		Sell & Buy Orders Traded per Price Type							(%)
PPT	(S)	1843	1734	1727	1747	1542	1591	1537	33.15%
HBD	(S)	2569	2682	2798	2845	3251	3233	3080	66.42%
BLK	(S)	18	26	18	21	21	16	20	0.43%
PPT	(B)	2222	2322	2302	2288	2343	2314	2332	35.74%
HBD	(B)	4131	3982	4222	4287	4199	4216	4193	64.26%
BLK	(B)	0	0	0	0	0	0	0	0.00%

<b>MCP</b>	Market Clearing Price (€/MWh)
<b>PPT</b>	Priority Price-Taking
<b>HBD</b>	Hybrid
<b>BLK</b>	Block
<b>CPL</b>	Market Coupling Flow

### Trade's Volume Mix

		Sell - MWh	Buy - MWh	
Lignite	(9.3%)	16,557	0	(0.0%)
Crete Conv.	(0.0%)	0	0	(0.0%)
Gas	(50.0%)	88,883	0	(0.0%)
Hydro	(2.9%)	5,191	0	(0.0%)
Imports	(7.2%)	12,788		
RES	(30.2%)	53,751	906	(0.5%)
Crete RES	(0.3%)	583	0	(0.0%)
HV Load	(0.0%)	0	18,945	(10.7%)
MV Load	(0.0%)	0	25,463	(14.3%)
LV Load	(0.0%)	0	93,036	(52.3%)
Crete Load	(0.0%)	0	7,304	(4.1%)
Pumping	(0.0%)	0	313	(0.2%)
Exports			28,722	(16.2%)
Sys.Losses	(0.0%)	0	3,064	(1.7%)
D/R Load	(0.0%)	0	0	(0.0%)

