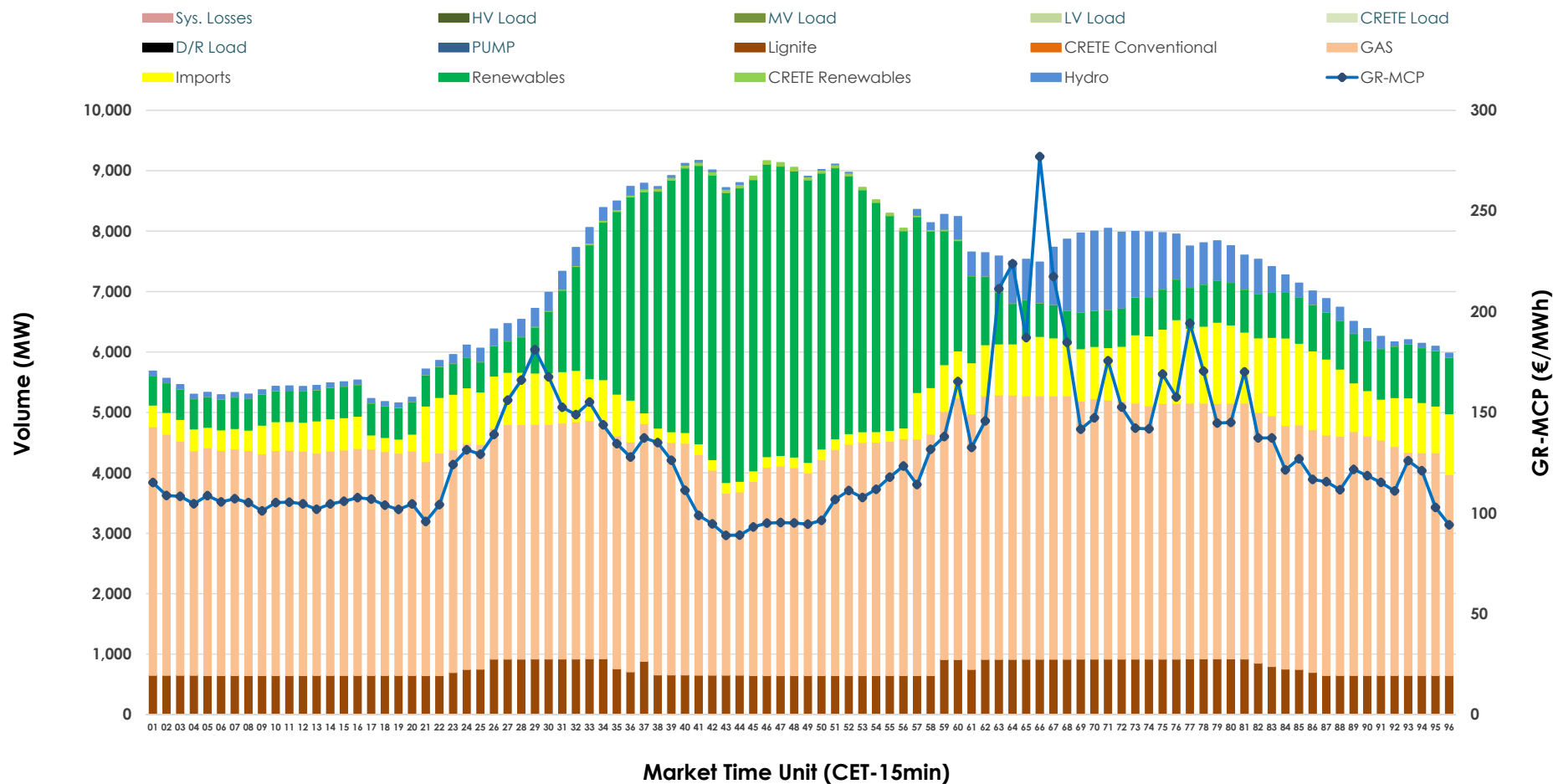


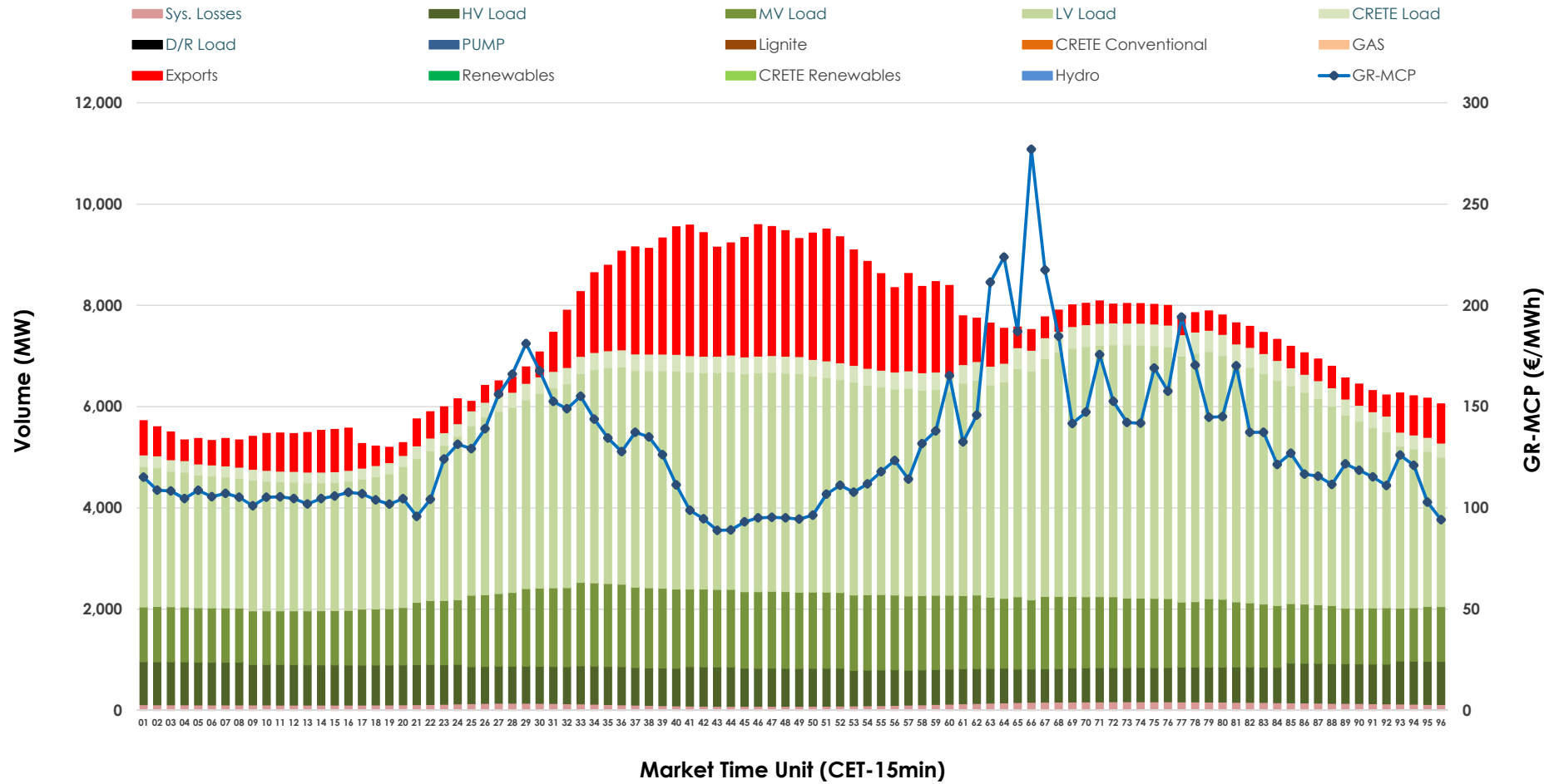


Day-Ahead Market Outlook

19.12.2025 Day-Ahead Market - Sell



19.12.2025 Day-Ahead Market - Buy



GR Bidding Zone Weekly Figures

Delivery Day	13.12	14.12	15.12	16.12	17.12	18.12	19.12
	⬇️ -8%	⬇️ -7%	⬆️ 24%	⬆️ 12%	⬇️ -8%	⬆️ 29%	⬇️ -16%
Avg.MCP (€/MWh)	101.20	94.47	117.02	130.63	120.01	155.30	129.83
Max.MCP (€/MWh)	126.66	131.52	212.01	252.89	194.02	282.28	277.03
Min.MCP (€/MWh)	65.77	15.34	55.00	78.05	79.63	94.82	88.91
	⬆️ 6%	⬇️ -8%	⬆️ 6%	⬆️ 1%	⬆️ 1%	⬇️ -2%	⬇️ -3%
Tot.Vol(GWh)	374.57	345.33	366.69	371.46	374.02	366.73	354.90

Trades by Order Type

Delivery Day		13.12	14.12	15.12	16.12	17.12	18.12	19.12	
Ord Price Type		Sell & Buy Trades in (GWh) per Price Type							(%)
PPT	(S)	77.644	72.135	57.776	50.507	50.539	37.047	37.468	21.11%
HBD	(S)	63.172	57.620	67.983	71.446	69.544	69.393	66.138	37.27%
BLK	(S)	46.314	41.476	54.767	60.239	61.995	68.977	64.196	36.18%
CPL	(S)	0.155	1.432	2.818	3.536	4.933	7.946	9.646	5.44%
PPT	(B)	15.276	12.717	15.232	14.711	15.114	16.030	15.779	8.89%
HBD	(B)	140.803	134.764	145.995	150.730	149.301	150.462	149.373	84.18%
BLK	(B)	0.000	0.000	0.000	0.000	0.000	0.000	0.000	0.00%
CPL	(B)	31.206	25.183	22.117	20.288	22.596	16.873	12.296	6.93%
		Sell & Buy Orders Traded per Price Type							(%)
PPT	(S)	1872	1843	1734	1727	1747	1542	1591	32.87%
HBD	(S)	2595	2569	2682	2798	2845	3251	3233	66.80%
BLK	(S)	23	18	26	18	21	21	16	0.33%
PPT	(B)	2270	2222	2322	2302	2288	2343	2314	35.44%
HBD	(B)	4087	4131	3982	4222	4287	4199	4216	64.56%
BLK	(B)	0	0	0	0	0	0	0	0.00%

MCP	Market Clearing Price (€/MWh)
PPT	Priority Price-Taking
HBD	Hybrid
BLK	Block
CPL	Market Coupling Flow

Trade's Volume Mix

		Sell - MWh	Buy - MWh	
Lignite	(10.4%)	17,987	0	(0.0%)
Crete Conv.	(0.0%)	0	0	(0.0%)
Gas	(53.9%)	93,322	0	(0.0%)
Hydro	(3.8%)	6,665	0	(0.0%)
Imports	(9.4%)	16,303		
RES	(22.2%)	38,484	0	(0.0%)
Crete RES	(0.3%)	440	0	(0.0%)
HV Load	(0.0%)	0	17,976	(10.2%)
MV Load	(0.0%)	0	31,885	(18.1%)
LV Load	(0.0%)	0	92,100	(52.2%)
Crete Load	(0.0%)	0	7,763	(4.4%)
Pumping	(0.0%)	0	0	(0.0%)
Exports			23,818	(13.5%)
Sys.Losses	(0.0%)	0	3,008	(1.7%)
D/R Load	(0.0%)	0	0	(0.0%)

