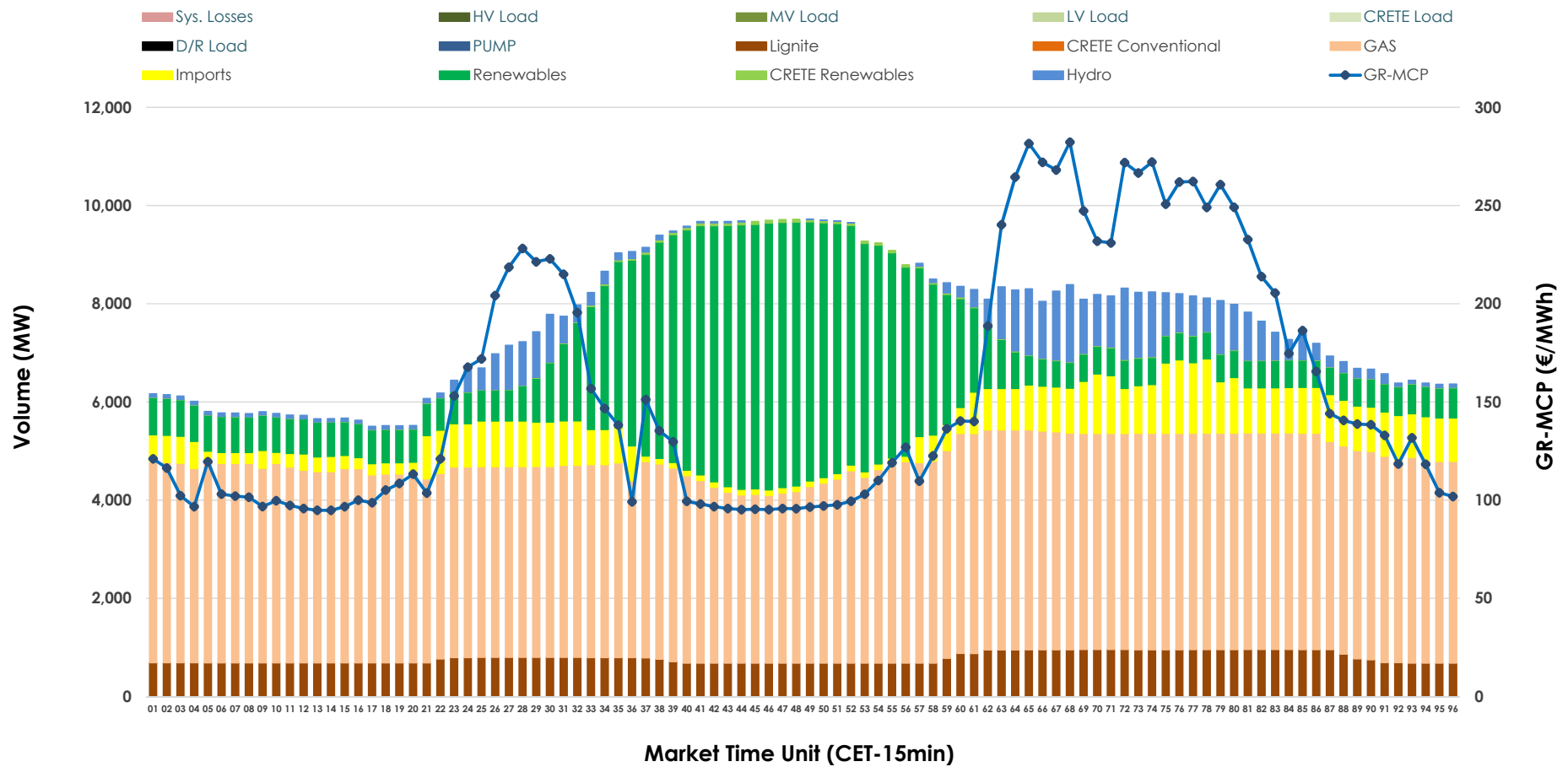


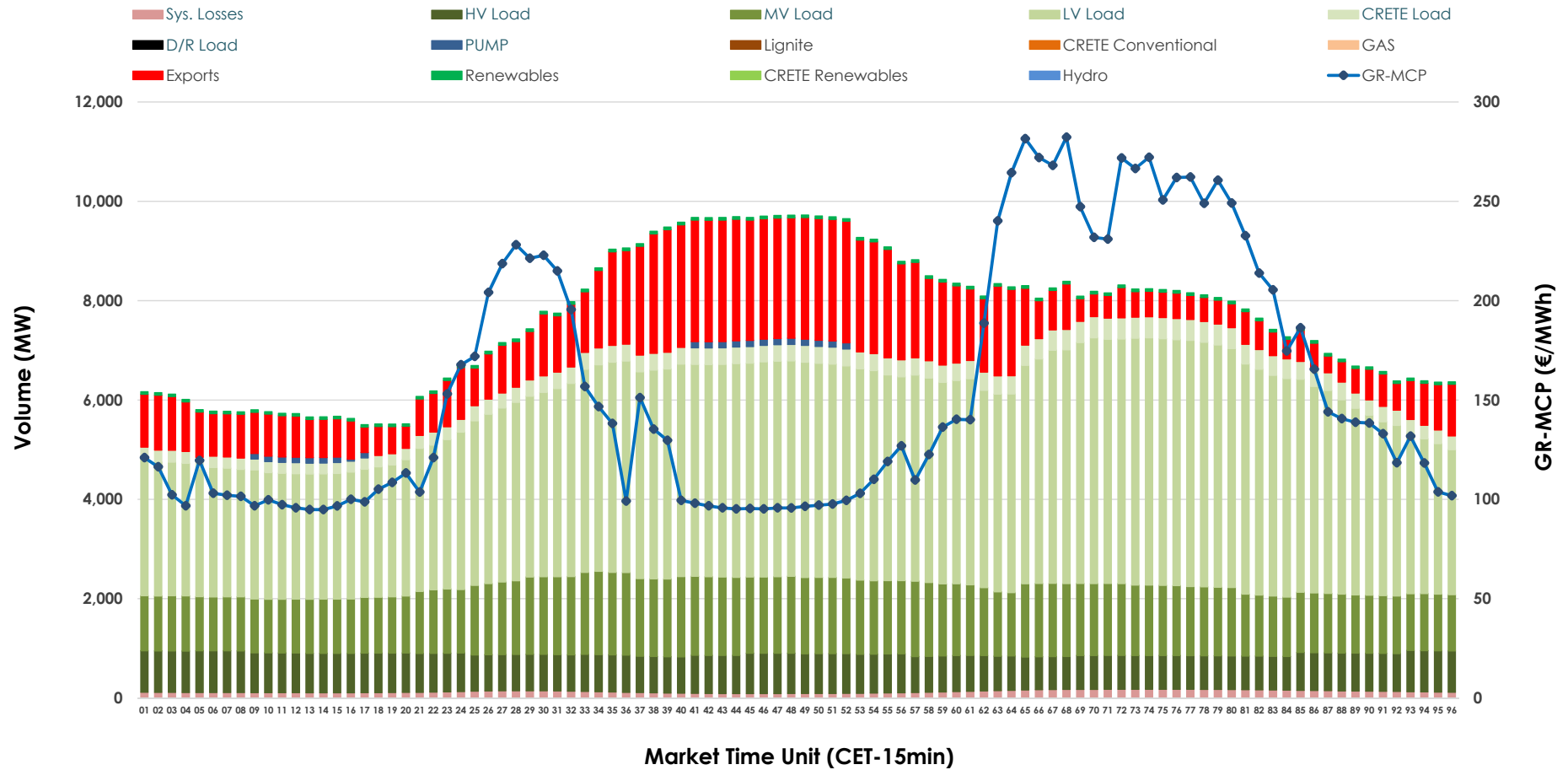


Day-Ahead Market Outlook

18.12.2025 Day-Ahead Market - Sell



18.12.2025 Day-Ahead Market - Buy



GR Bidding Zone Weekly Figures

| Delivery Day | 12.12 | 13.12 | 14.12 | 15.12 | 16.12 | 17.12 | 18.12 |
|-----------------|--------|--------|--------|--------|--------|--------|--------|
| | 15% | -8% | -7% | 24% | 12% | -8% | 29% |
| Avg.MCP (€/MWh) | 109.82 | 101.20 | 94.47 | 117.02 | 130.63 | 120.01 | 155.30 |
| Max.MCP (€/MWh) | 175.35 | 126.66 | 131.52 | 212.01 | 252.89 | 194.02 | 282.28 |
| Min.MCP (€/MWh) | 0.20 | 65.77 | 15.34 | 55.00 | 78.05 | 79.63 | 94.82 |
| | 0% | 6% | -8% | 6% | 1% | 1% | -2% |
| Tot.Vol(GWh) | 353.56 | 374.57 | 345.33 | 366.69 | 371.46 | 374.02 | 366.73 |

Trades by Order Type

| Delivery Day | | 12.12 | 13.12 | 14.12 | 15.12 | 16.12 | 17.12 | 18.12 | |
|----------------|-----|-------------------------------------------|---------|---------|---------|---------|---------|---------|--------|
| Ord Price Type | | Sell & Buy Trades in (GWh) per Price Type | | | | | | | (%) |
| PPT | (S) | 68.396 | 77.644 | 72.135 | 57.776 | 50.507 | 50.539 | 37.047 | 20.20% |
| HBD | (S) | 55.228 | 63.172 | 57.620 | 67.983 | 71.446 | 69.544 | 69.393 | 37.84% |
| BLK | (S) | 47.529 | 46.314 | 41.476 | 54.767 | 60.239 | 61.995 | 68.977 | 37.62% |
| CPL | (S) | 5.630 | 0.155 | 1.432 | 2.818 | 3.536 | 4.933 | 7.946 | 4.33% |
| PPT | (B) | 14.984 | 15.276 | 12.717 | 15.232 | 14.711 | 15.114 | 16.030 | 8.74% |
| HBD | (B) | 143.160 | 140.803 | 134.764 | 145.995 | 150.730 | 149.301 | 150.462 | 82.06% |
| BLK | (B) | 0.000 | 0.000 | 0.000 | 0.000 | 0.000 | 0.000 | 0.000 | 0.00% |
| CPL | (B) | 18.638 | 31.206 | 25.183 | 22.117 | 20.288 | 22.596 | 16.873 | 9.20% |
| | | Sell & Buy Orders Traded per Price Type | | | | | | | (%) |
| PPT | (S) | 1867 | 1872 | 1843 | 1734 | 1727 | 1747 | 1542 | 32.03% |
| HBD | (S) | 2598 | 2595 | 2569 | 2682 | 2798 | 2845 | 3251 | 67.53% |
| BLK | (S) | 23 | 23 | 18 | 26 | 18 | 21 | 21 | 0.44% |
| PPT | (B) | 2287 | 2270 | 2222 | 2322 | 2302 | 2288 | 2343 | 35.81% |
| HBD | (B) | 4233 | 4087 | 4131 | 3982 | 4222 | 4287 | 4199 | 64.19% |
| BLK | (B) | 0 | 0 | 0 | 0 | 0 | 0 | 0 | 0.00% |

MCP Market Clearing Price (€/MWh)

PPT Priority Price-Taking

HBD Hybrid

BLK Block

CPL Market Coupling Flow

Trade's Volume Mix

| | | Sell - MWh | Buy - MWh | |
|-------------|---------|------------|-----------|---------|
| Lignite | (10.3%) | 18,832 | 0 | (0.0%) |
| Crete Conv. | (0.0%) | 0 | 0 | (0.0%) |
| Gas | (53.1%) | 97,451 | 0 | (0.0%) |
| Hydro | (4.9%) | 8,945 | 0 | (0.0%) |
| Imports | (8.2%) | 15,094 | | |
| RES | (23.2%) | 42,536 | 1,224 | (0.7%) |
| Crete RES | (0.3%) | 506 | 0 | (0.0%) |
| HV Load | (0.0%) | 0 | 18,114 | (9.9%) |
| MV Load | (0.0%) | 0 | 32,440 | (17.7%) |
| LV Load | (0.0%) | 0 | 91,448 | (49.9%) |
| Crete Load | (0.0%) | 0 | 7,788 | (4.2%) |
| Pumping | (0.0%) | 0 | 605 | (0.3%) |
| Exports | | | 28,649 | (15.6%) |
| Sys.Losses | (0.0%) | 0 | 3,095 | (1.7%) |
| D/R Load | (0.0%) | 0 | 0 | (0.0%) |

