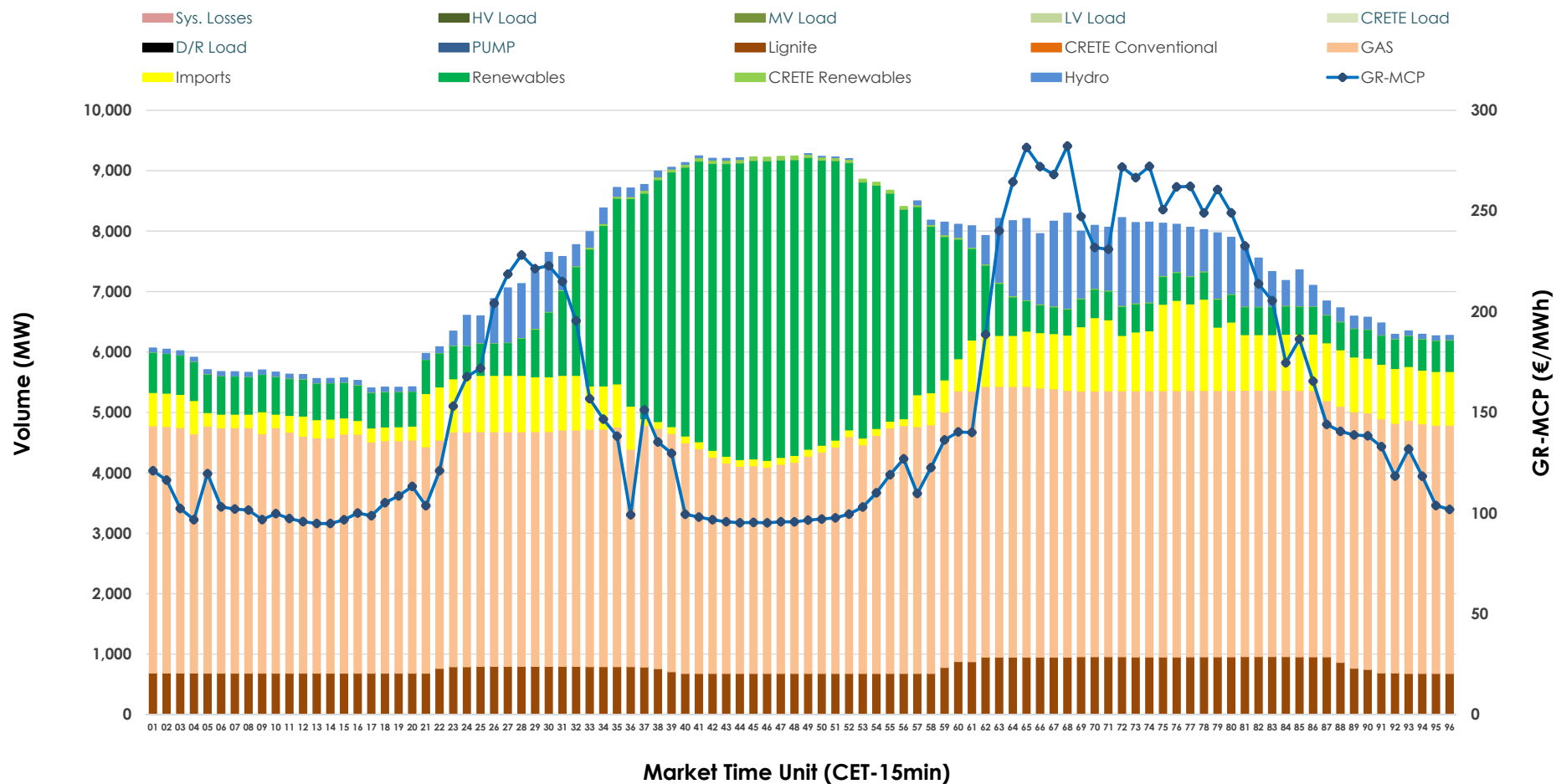


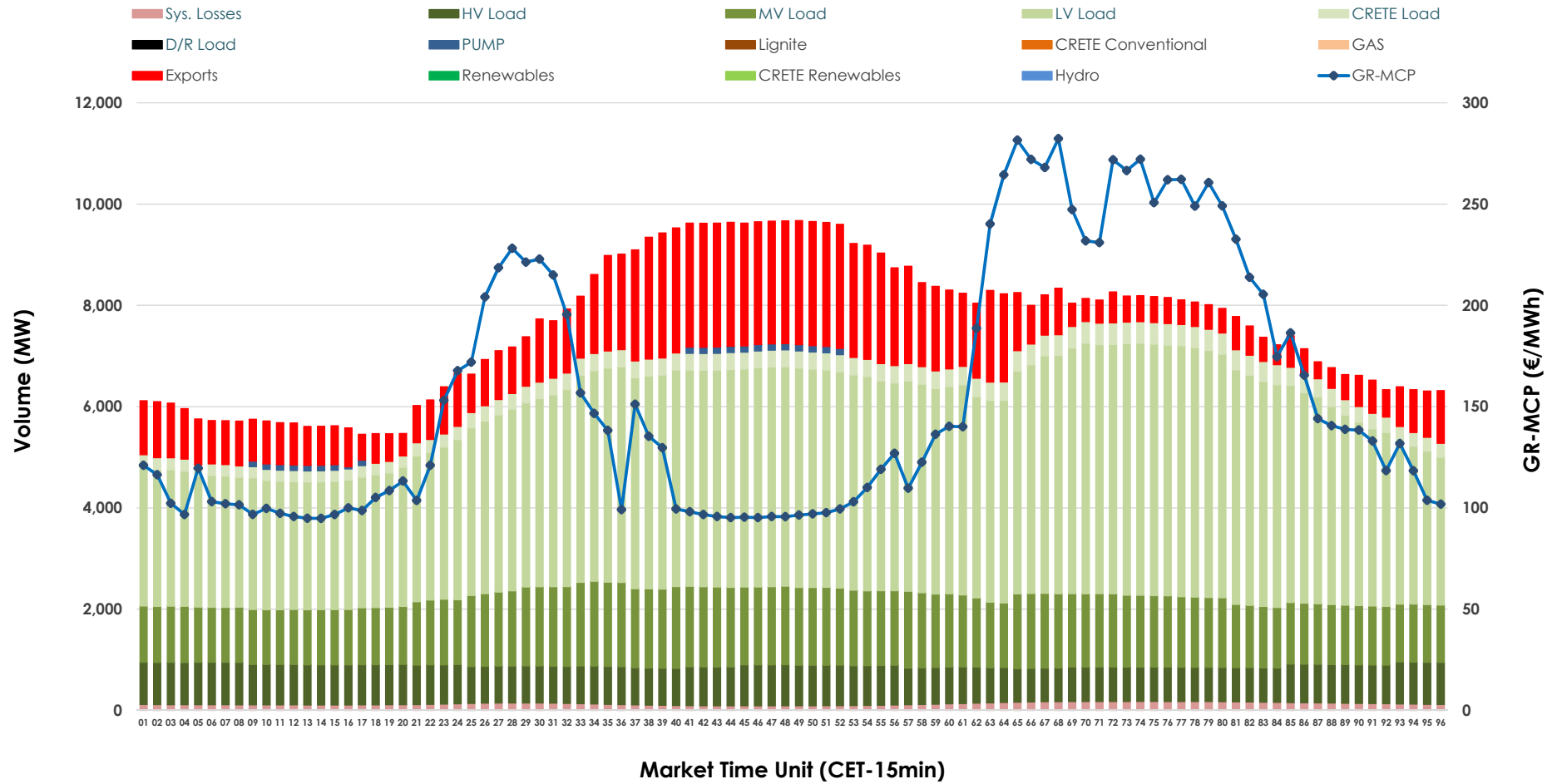


## Day-Ahead Market Outlook

18.12.2025 Day-Ahead Market - Sell



## 18.12.2025 Day-Ahead Market - Buy



### GR Bidding Zone Weekly Figures

Delivery Day	12.12	13.12	14.12	15.12	16.12	17.12	18.12
	↗ 15%	↘ -8%	↘ -7%	↗ 24%	↘ 12%	↘ -8%	↗ 29%
Avg.MCP (€/MWh)	109.82	101.20	94.47	117.02	130.63	120.01	155.30
Max.MCP (€/MWh)	175.35	126.66	131.52	212.01	252.89	194.02	282.28
Min.MCP (€/MWh)	0.20	65.77	15.34	55.00	78.05	79.63	94.82
	➡ 0%	↗ 6%	↘ -8%	↗ 6%	↘ 1%	➡ 1%	↘ -2%
Tot.Vol(GWh)	353.56	374.57	345.33	366.69	371.46	374.02	366.73

### Trades by Order Type

Delivery Day		12.12	13.12	14.12	15.12	16.12	17.12	18.12	
Ord Price Type		Sell & Buy Trades in (GWh) per Price Type							(%)
PPT	(S)	68.396	77.644	72.135	57.776	50.507	50.539	37.047	20.20%
HBD	(S)	55.228	63.172	57.620	67.983	71.446	69.544	69.393	37.84%
BLK	(S)	47.529	46.314	41.476	54.767	60.239	61.995	68.977	37.62%
CPL	(S)	5.630	0.155	1.432	2.818	3.536	4.933	7.946	4.33%
PPT	(B)	14.984	15.276	12.717	15.232	14.711	15.114	16.030	8.74%
HBD	(B)	143.160	140.803	134.764	145.995	150.730	149.301	150.462	82.06%
BLK	(B)	0.000	0.000	0.000	0.000	0.000	0.000	0.000	0.00%
CPL	(B)	18.638	31.206	25.183	22.117	20.288	22.596	16.873	9.20%
		Sell & Buy Orders Traded per Price Type							(%)
PPT	(S)	1867	1872	1843	1734	1727	1747	1542	32.03%
HBD	(S)	2598	2595	2569	2682	2798	2845	3251	67.53%
BLK	(S)	23	23	18	26	18	21	21	0.44%
PPT	(B)	2287	2270	2222	2322	2302	2288	2343	35.81%
HBD	(B)	4233	4087	4131	3982	4222	4287	4199	64.19%
BLK	(B)	0	0	0	0	0	0	0	0.00%

<b>MCP</b>	Market Clearing Price (€/MWh)
<b>PPT</b>	Priority Price-Taking
<b>HBD</b>	Hybrid
<b>BLK</b>	Block
<b>CPL</b>	Market Coupling Flow

### Trade's Volume Mix

		Sell - MWh	Buy - MWh	
Lignite	(10.5%)	18,832	0	(0.0%)
Crete Conv.	(0.0%)	0	0	(0.0%)
Gas	(54.5%)	97,451	0	(0.0%)
Hydro	(5.0%)	8,945	0	(0.0%)
Imports	(8.4%)	15,094		
RES	(21.2%)	37,993	0	(0.0%)
Crete RES	(0.3%)	506	0	(0.0%)
HV Load	(0.0%)	0	18,114	(9.9%)
MV Load	(0.0%)	0	32,440	(17.8%)
LV Load	(0.0%)	0	91,448	(50.2%)
Crete Load	(0.0%)	0	7,788	(4.3%)
Pumping	(0.0%)	0	605	(0.3%)
Exports			28,649	(15.7%)
Sys.Losses	(0.0%)	0	3,095	(1.7%)
D/R Load	(0.0%)	0	0	(0.0%)

