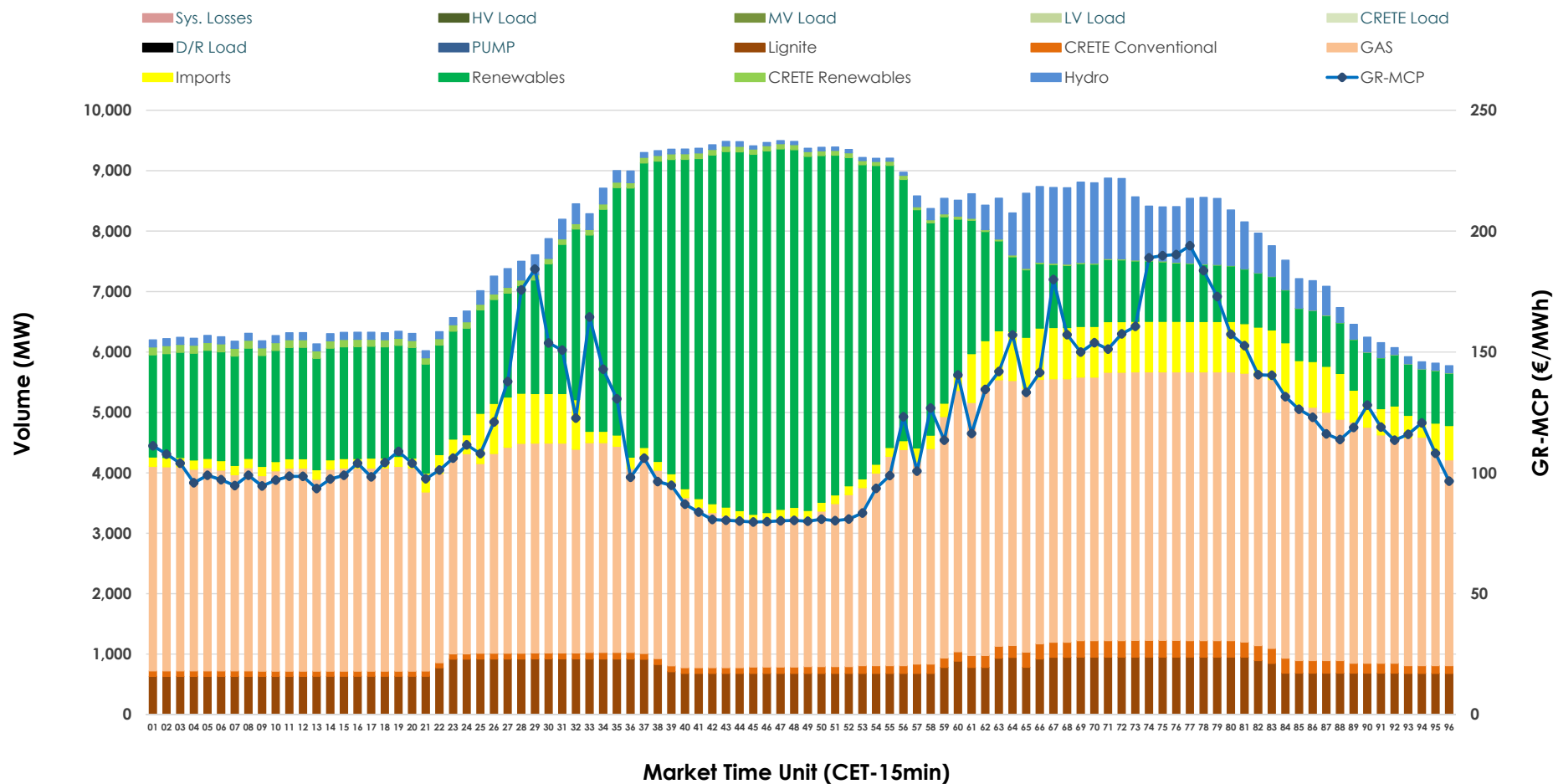


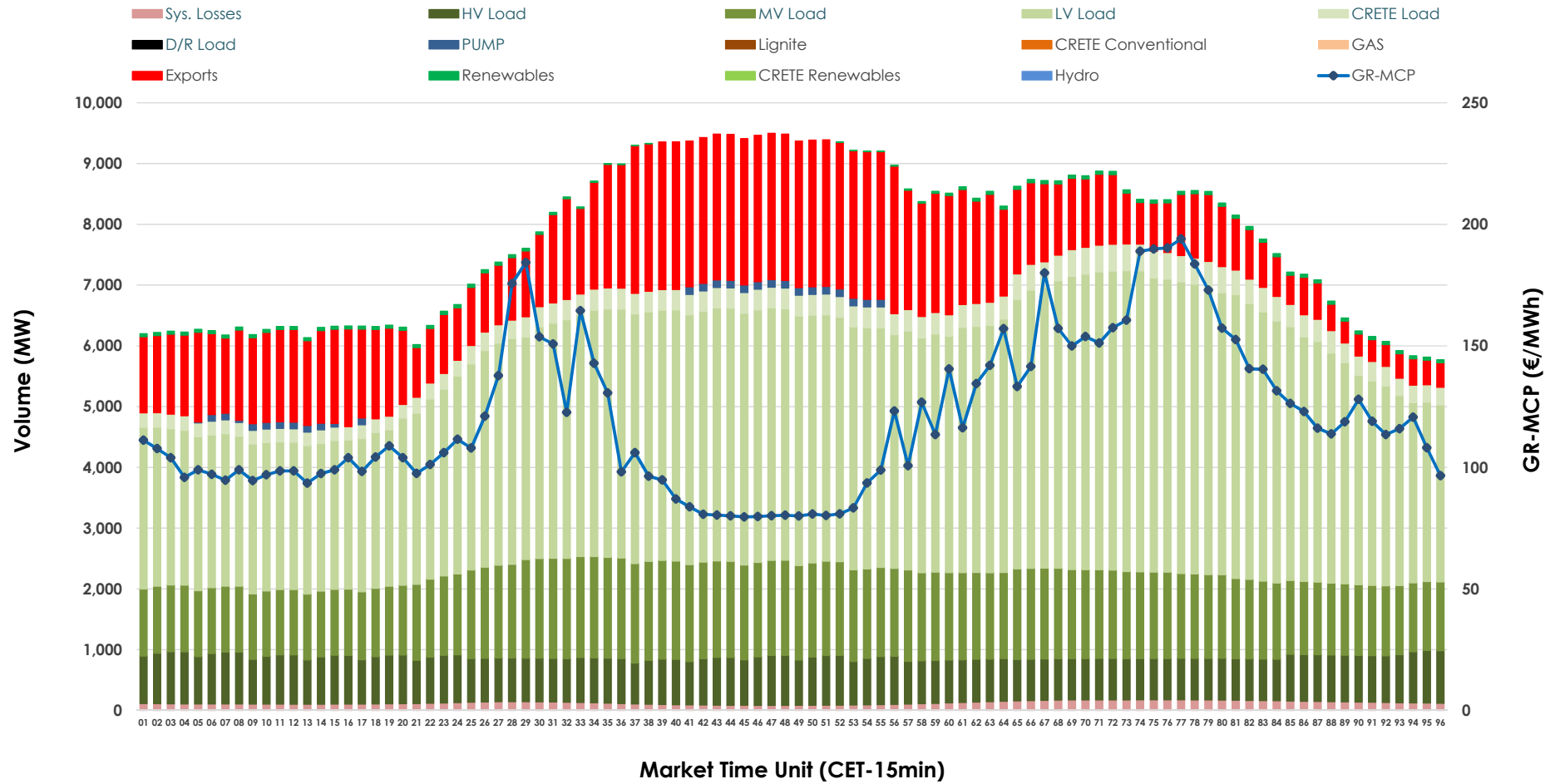


## Day-Ahead Market Outlook

17.12.2025 Day-Ahead Market - Sell



## 17.12.2025 Day-Ahead Market - Buy



### GR Bidding Zone Weekly Figures

Delivery Day	11.12	12.12	13.12	14.12	15.12	16.12	17.12
	⬇️ -11%	⬆️ 15%	⬇️ -8%	⬇️ -7%	⬆️ 24%	⬆️ 12%	⬇️ -8%
<b>Avg.MCP (€/MWh)</b>	95.64	109.82	101.20	94.47	117.02	130.63	120.01
<b>Max.MCP (€/MWh)</b>	179.21	175.35	126.66	131.52	212.01	252.89	194.02
<b>Min.MCP (€/MWh)</b>	0.00	0.20	65.77	15.34	55.00	78.05	79.63
	⬇️ -3%	➡️ 0%	⬆️ 6%	⬇️ -8%	⬆️ 6%	⬆️ 1%	➡️ 1%
<b>Tot.Vol(GWh)</b>	354.50	353.56	374.57	345.33	366.69	371.46	374.02

### Trades by Order Type

Delivery Day		11.12	12.12	13.12	14.12	15.12	16.12	17.12	
Ord Price Type		Sell & Buy Trades in (GWh) per Price Type							(%)
<b>PPT</b>	(S)	64.264	68.396	77.644	72.135	57.776	50.507	50.539	27.02%
<b>HBD</b>	(S)	59.958	55.228	63.172	57.620	67.983	71.446	69.544	37.19%
<b>BLK</b>	(S)	50.069	47.529	46.314	41.476	54.767	60.239	61.995	33.15%
<b>CPL</b>	(S)	2.959	5.630	0.155	1.432	2.818	3.536	4.933	2.64%
<b>PPT</b>	(B)	14.935	14.984	15.276	12.717	15.232	14.711	15.114	8.08%
<b>HBD</b>	(B)	141.860	143.160	140.803	134.764	145.995	150.730	149.301	79.84%
<b>BLK</b>	(B)	0.000	0.000	0.000	0.000	0.000	0.000	0.000	0.00%
<b>CPL</b>	(B)	20.455	18.638	31.206	25.183	22.117	20.288	22.596	12.08%
		Sell & Buy Orders Traded per Price Type							(%)
<b>PPT</b>	(S)	1809	1867	1872	1843	1734	1727	1747	37.87%
<b>HBD</b>	(S)	2541	2598	2595	2569	2682	2798	2845	61.67%
<b>BLK</b>	(S)	18	23	23	18	26	18	21	0.46%
<b>PPT</b>	(B)	2287	2287	2270	2222	2322	2302	2288	34.80%
<b>HBD</b>	(B)	4298	4233	4087	4131	3982	4222	4287	65.20%
<b>BLK</b>	(B)	0	0	0	0	0	0	0	0.00%

<b>MCP</b>	Market Clearing Price (€/MWh)
<b>PPT</b>	Priority Price-Taking
<b>HBD</b>	Hybrid
<b>BLK</b>	Block
<b>CPL</b>	Market Coupling Flow

### Trade's Volume Mix

		Sell - MWh	Buy - MWh	
<b>Lignite</b>	(9.9%)	18,505	0	(0.0%)
<b>Crete Conv.</b>	(1.9%)	3,542	0	(0.0%)
<b>Gas</b>	(45.9%)	85,819	0	(0.0%)
<b>Hydro</b>	(4.6%)	8,537	0	(0.0%)
<b>Imports</b>	(5.6%)	10,513		
<b>RES</b>	(31.3%)	58,494	904	(0.5%)
<b>Crete RES</b>	(0.9%)	1,601	0	(0.0%)
<b>HV Load</b>	(0.0%)	0	17,977	(9.6%)
<b>MV Load</b>	(0.0%)	0	32,839	(17.6%)
<b>LV Load</b>	(0.0%)	0	89,432	(47.8%)
<b>Crete Load</b>	(0.0%)	0	7,953	(4.3%)
<b>Pumping</b>	(0.0%)	0	744	(0.4%)
<b>Exports</b>			34,154	(18.3%)
<b>Sys.Losses</b>	(0.0%)	0	3,008	(1.6%)
<b>D/R Load</b>	(0.0%)	0	0	(0.0%)

