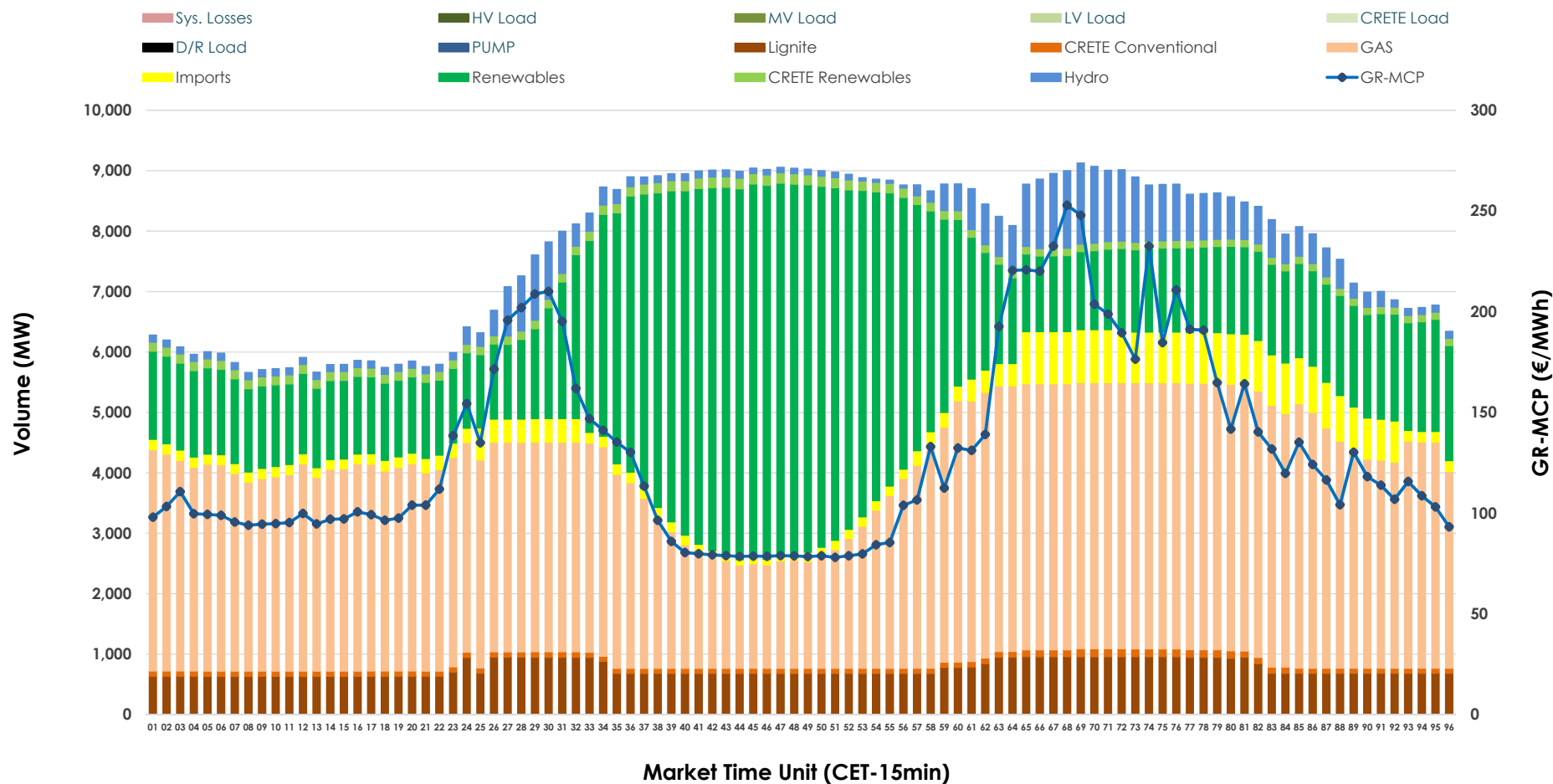


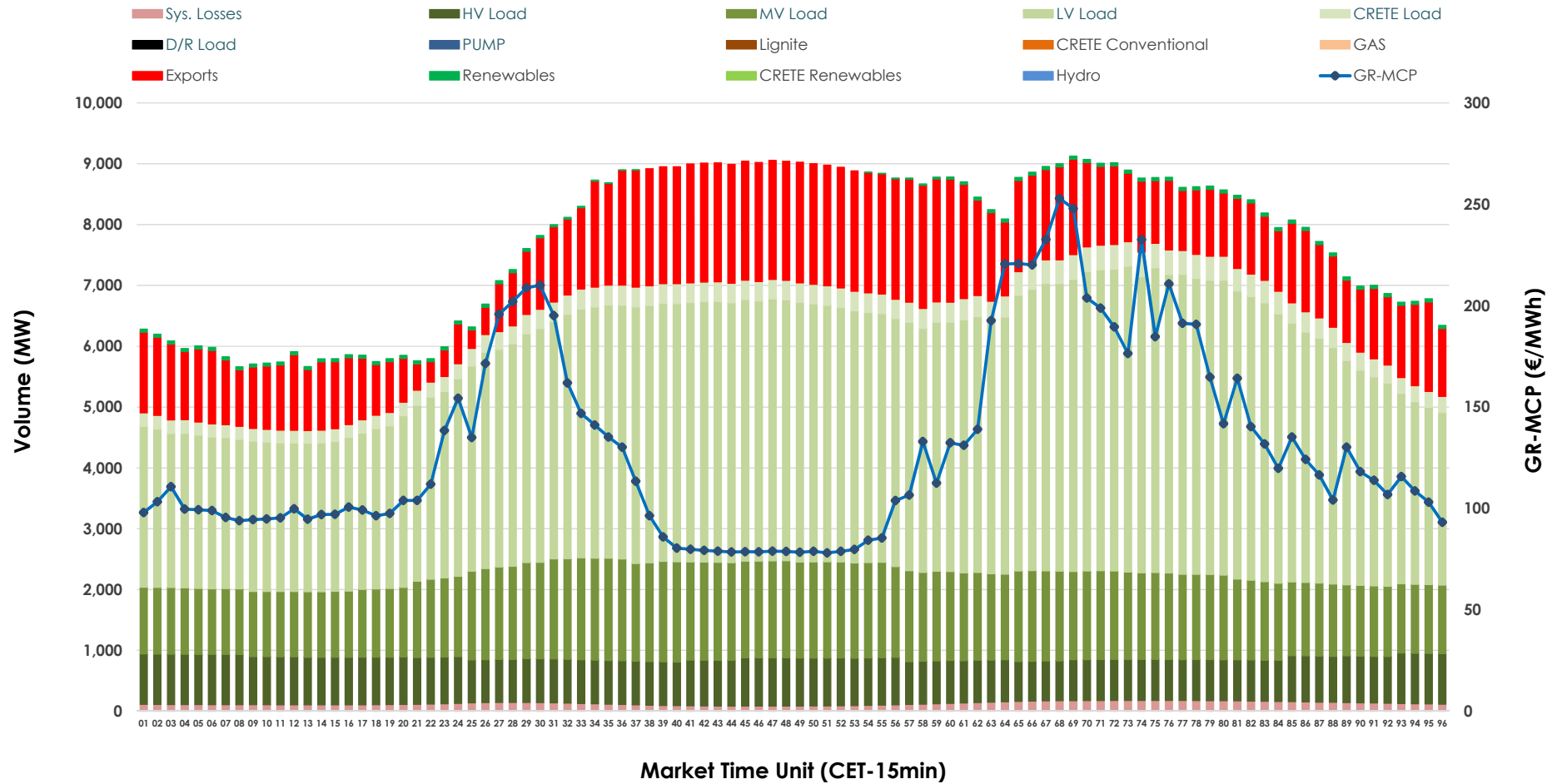


Day-Ahead Market Outlook

16.12.2025 Day-Ahead Market - Sell



16.12.2025 Day-Ahead Market - Buy



GR Bidding Zone Weekly Figures

Delivery Day	10.12	11.12	12.12	13.12	14.12	15.12	16.12
	↗ 22%	↘ -11%	↗ 15%	↘ -8%	↘ -7%	↗ 24%	↗ 12%
Avg.MCP (€/MWh)	106.94	95.64	109.82	101.20	94.47	117.02	130.63
Max.MCP (€/MWh)	162.11	179.21	175.35	126.66	131.52	212.01	252.89
Min.MCP (€/MWh)	10.00	0.00	0.20	65.77	15.34	55.00	78.05
	➡ -1%	↘ -3%	➡ 0%	↗ 6%	↘ -8%	↗ 6%	↗ 1%
Tot.Vol(GWh)	364.77	354.50	353.56	374.57	345.33	366.69	371.46

Trades by Order Type

Delivery Day		10.12	11.12	12.12	13.12	14.12	15.12	16.12	
Ord Price Type		Sell & Buy Trades in (GWh) per Price Type							(%)
PPT	(S)	56.263	64.264	68.396	77.644	72.135	57.776	50.507	27.19%
HBD	(S)	61.887	59.958	55.228	63.172	57.620	67.983	71.446	38.47%
BLK	(S)	61.392	50.069	47.529	46.314	41.476	54.767	60.239	32.43%
CPL	(S)	2.843	2.959	5.630	0.155	1.432	2.818	3.536	1.90%
PPT	(B)	14.512	14.935	14.984	15.276	12.717	15.232	14.711	7.92%
HBD	(B)	144.536	141.860	143.160	140.803	134.764	145.995	150.730	81.16%
BLK	(B)	0.000	0.000	0.000	0.000	0.000	0.000	0.000	0.00%
CPL	(B)	23.337	20.455	18.638	31.206	25.183	22.117	20.288	10.92%
		Sell & Buy Orders Traded per Price Type							(%)
PPT	(S)	1767	1809	1867	1872	1843	1734	1727	38.01%
HBD	(S)	2632	2541	2598	2595	2569	2682	2798	61.59%
BLK	(S)	21	18	23	23	18	26	18	0.40%
PPT	(B)	2260	2287	2287	2270	2222	2322	2302	35.29%
HBD	(B)	4211	4298	4233	4087	4131	3982	4222	64.71%
BLK	(B)	0	0	0	0	0	0	0	0.00%

MCP	Market Clearing Price (€/MWh)
PPT	Priority Price-Taking
HBD	Hybrid
BLK	Block
CPL	Market Coupling Flow

Trade's Volume Mix

		Sell - MWh	Buy - MWh	
Lignite	(9.8%)	18,185	0	(0.0%)
Crete Conv.	(1.2%)	2,231	0	(0.0%)
Gas	(44.4%)	82,489	0	(0.0%)
Hydro	(5.0%)	9,361	0	(0.0%)
Imports	(4.9%)	9,179		
RES	(32.8%)	60,883	890	(0.5%)
Crete RES	(1.8%)	3,400	0	(0.0%)
HV Load	(0.0%)	0	17,861	(9.6%)
MV Load	(0.0%)	0	32,981	(17.8%)
LV Load	(0.0%)	0	91,178	(49.1%)
Crete Load	(0.0%)	0	7,428	(4.0%)
Pumping	(0.0%)	0	0	(0.0%)
Exports			32,359	(17.4%)
Sys.Losses	(0.0%)	0	3,032	(1.6%)
D/R Load	(0.0%)	0	0	(0.0%)

