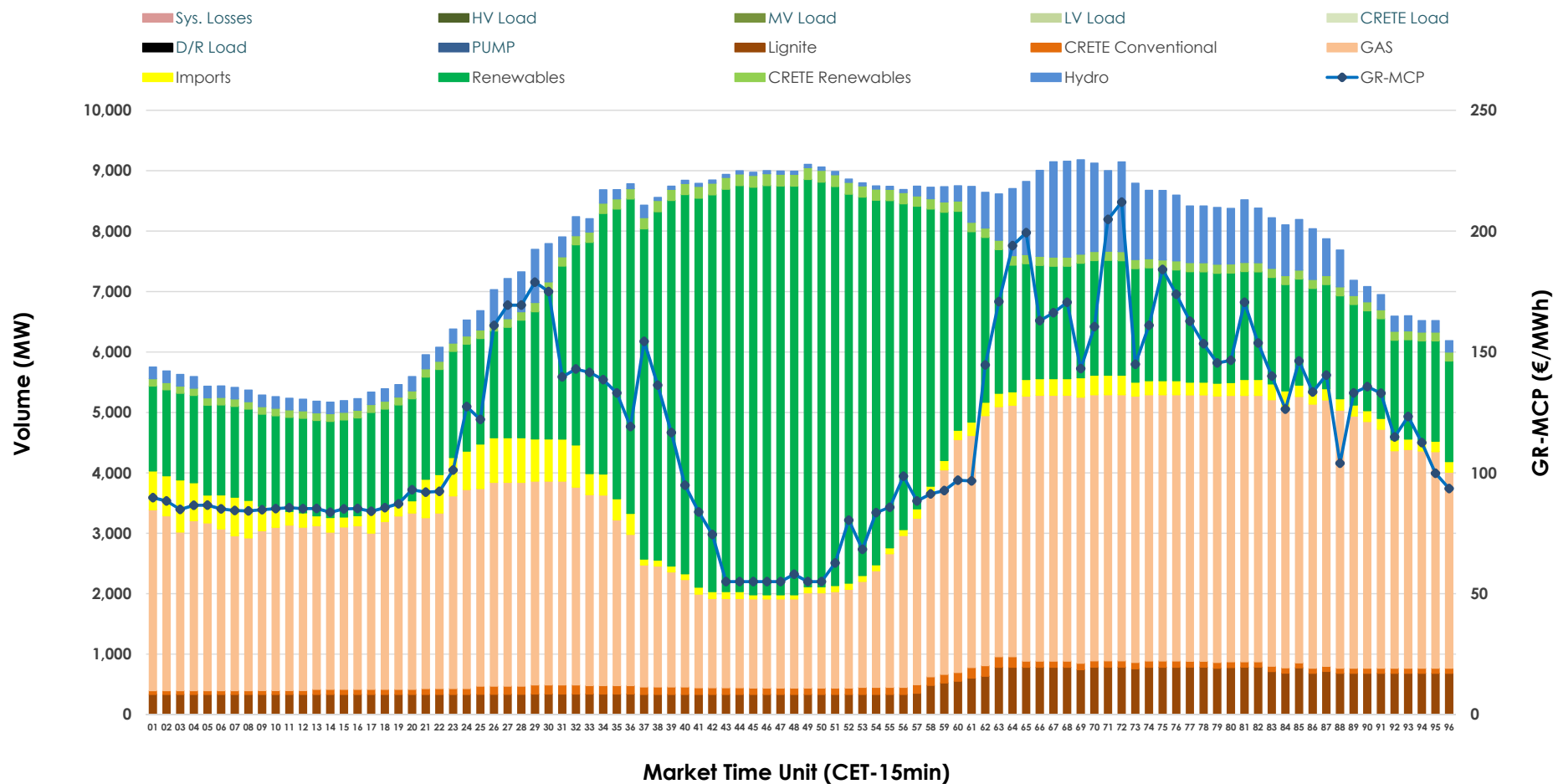


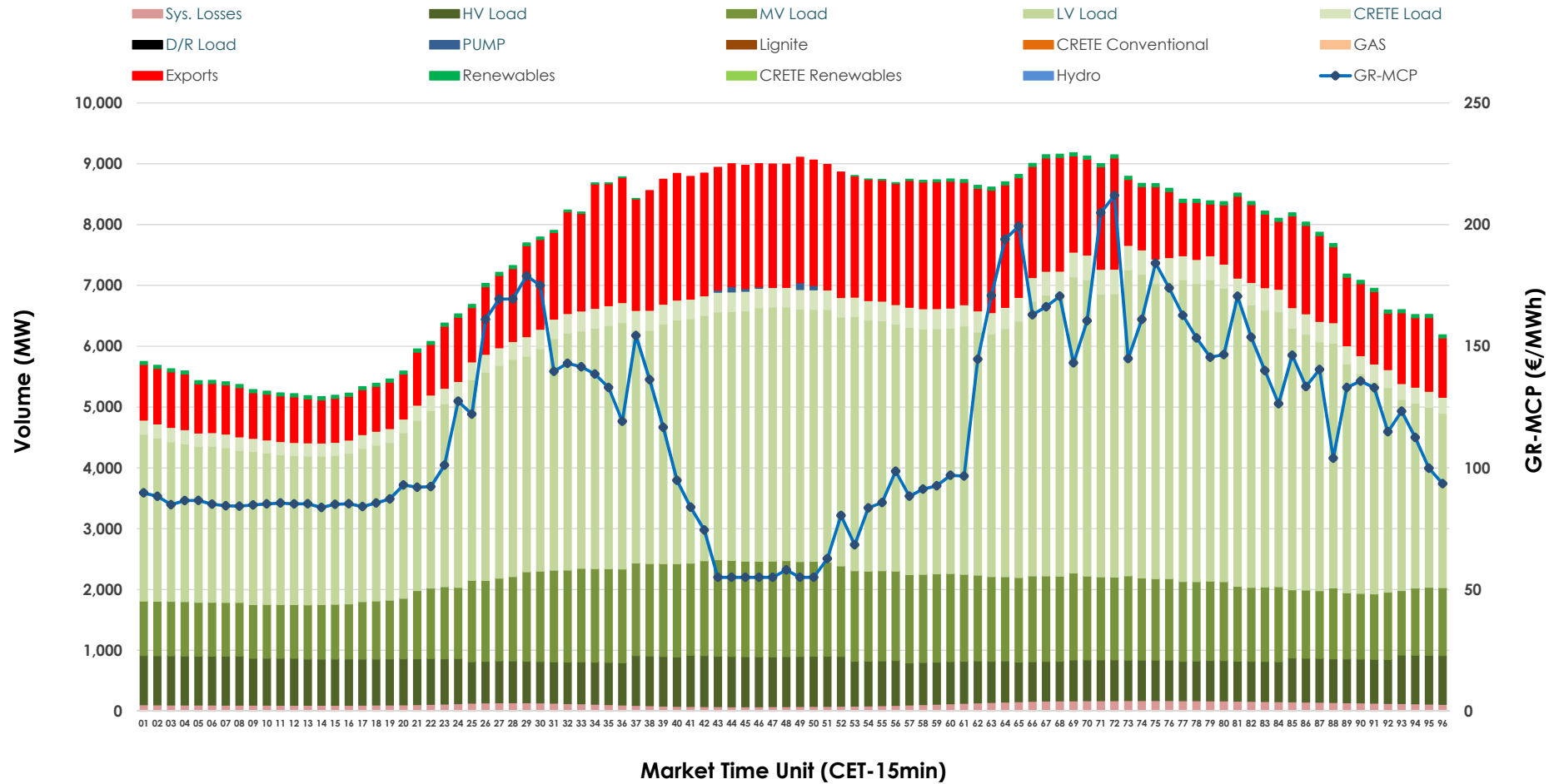


## Day-Ahead Market Outlook

15.12.2025 Day-Ahead Market - Sell



## 15.12.2025 Day-Ahead Market - Buy



### GR Bidding Zone Weekly Figures

Delivery Day	09.12	10.12	11.12	12.12	13.12	14.12	15.12
	⬇️ -12%	⬆️ 22%	⬇️ -11%	⬆️ 15%	⬇️ -8%	⬇️ -7%	⬆️ 24%
Avg.MCP (€/MWh)	87.53	106.94	95.64	109.82	101.20	94.47	117.02
Max.MCP (€/MWh)	156.00	162.11	179.21	175.35	126.66	131.52	212.01
Min.MCP (€/MWh)	0.00	10.00	0.00	0.20	65.77	15.34	55.00
	⬆️ 4%	⬆️ -1%	⬇️ -3%	⬆️ 0%	⬆️ 6%	⬇️ -8%	⬆️ 6%
Tot.Vol(GWh)	368.43	364.77	354.50	353.56	374.57	345.33	366.69

### Trades by Order Type

Delivery Day		09.12	10.12	11.12	12.12	13.12	14.12	15.12	
Ord Price Type		Sell & Buy Trades in (GWh) per Price Type							(%)
PPT	(S)	62.032	56.263	64.264	68.396	77.644	72.135	57.776	31.51%
HBD	(S)	68.355	61.887	59.958	55.228	63.172	57.620	67.983	37.08%
BLK	(S)	53.814	61.392	50.069	47.529	46.314	41.476	54.767	29.87%
CPL	(S)	0.012	2.843	2.959	5.630	0.155	1.432	2.818	1.54%
PPT	(B)	14.801	14.512	14.935	14.984	15.276	12.717	15.232	8.31%
HBD	(B)	141.029	144.536	141.860	143.160	140.803	134.764	145.995	79.63%
BLK	(B)	0.000	0.000	0.000	0.000	0.000	0.000	0.000	0.00%
CPL	(B)	28.384	23.337	20.455	18.638	31.206	25.183	22.117	12.06%
		Sell & Buy Orders Traded per Price Type							(%)
PPT	(S)	1684	1767	1809	1867	1872	1843	1734	39.04%
HBD	(S)	2546	2632	2541	2598	2595	2569	2682	60.38%
BLK	(S)	21	21	18	23	23	18	26	0.59%
PPT	(B)	2322	2260	2287	2287	2270	2222	2322	36.83%
HBD	(B)	4267	4211	4298	4233	4087	4131	3982	63.17%
BLK	(B)	0	0	0	0	0	0	0	0.00%

<b>MCP</b>	Market Clearing Price (€/MWh)
<b>PPT</b>	Priority Price-Taking
<b>HBD</b>	Hybrid
<b>BLK</b>	Block
<b>CPL</b>	Market Coupling Flow

### Trade's Volume Mix

		Sell - MWh	Buy - MWh	
Lignite	(6.4%)	11,789	0	(0.0%)
Crete Conv.	(1.4%)	2,501	0	(0.0%)
Gas	(41.5%)	76,038	0	(0.0%)
Hydro	(5.9%)	10,807	0	(0.0%)
Imports	(3.9%)	7,100		
RES	(38.9%)	71,404	896	(0.5%)
Crete RES	(2.0%)	3,705	0	(0.0%)
HV Load	(0.0%)	0	17,662	(9.6%)
MV Load	(0.0%)	0	30,599	(16.7%)
LV Load	(0.0%)	0	89,687	(48.9%)
Crete Load	(0.0%)	0	7,487	(4.1%)
Pumping	(0.0%)	0	95	(0.1%)
Exports			34,013	(18.6%)
Sys.Losses	(0.0%)	0	2,904	(1.6%)
D/R Load	(0.0%)	0	0	(0.0%)

