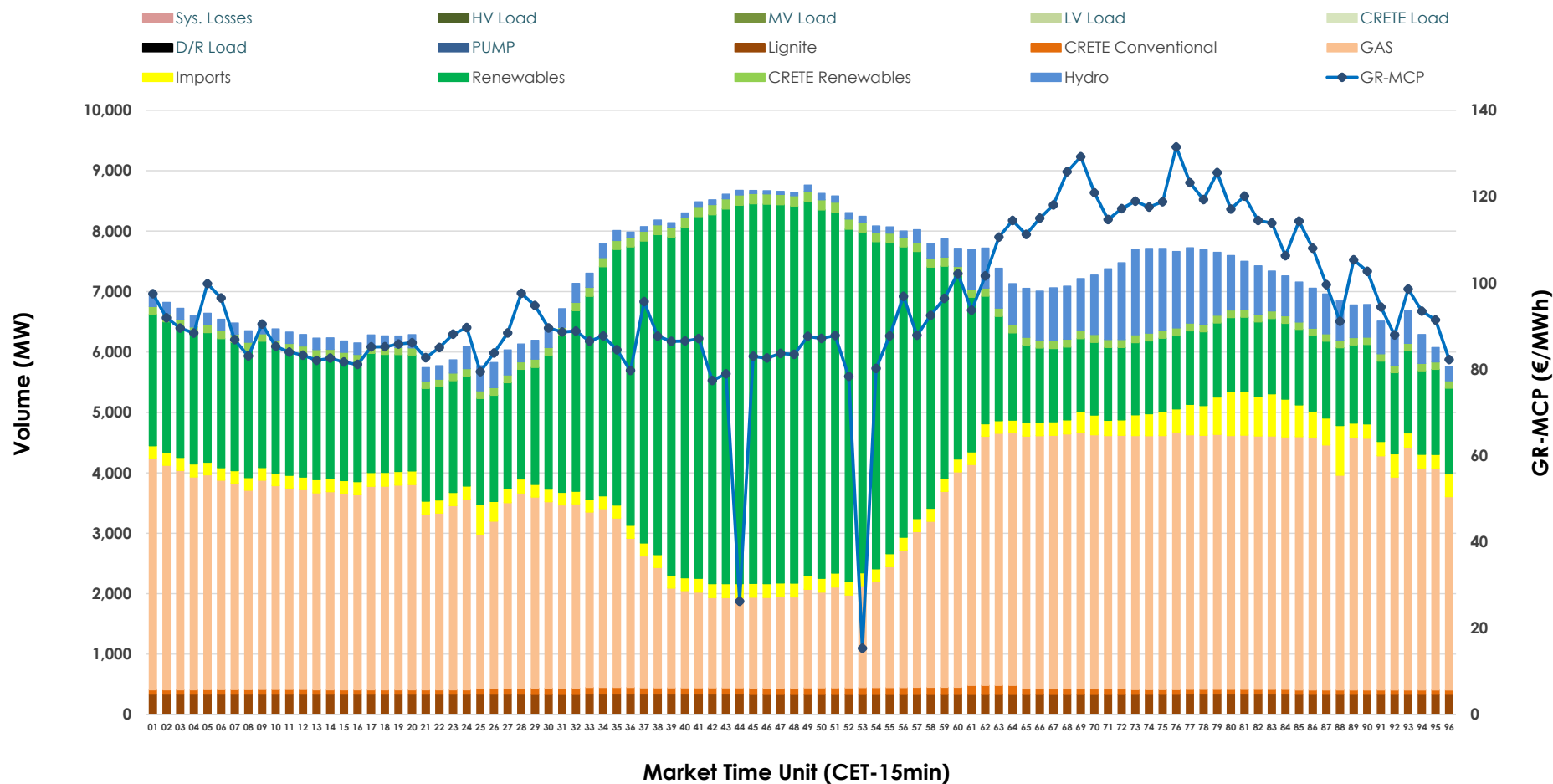


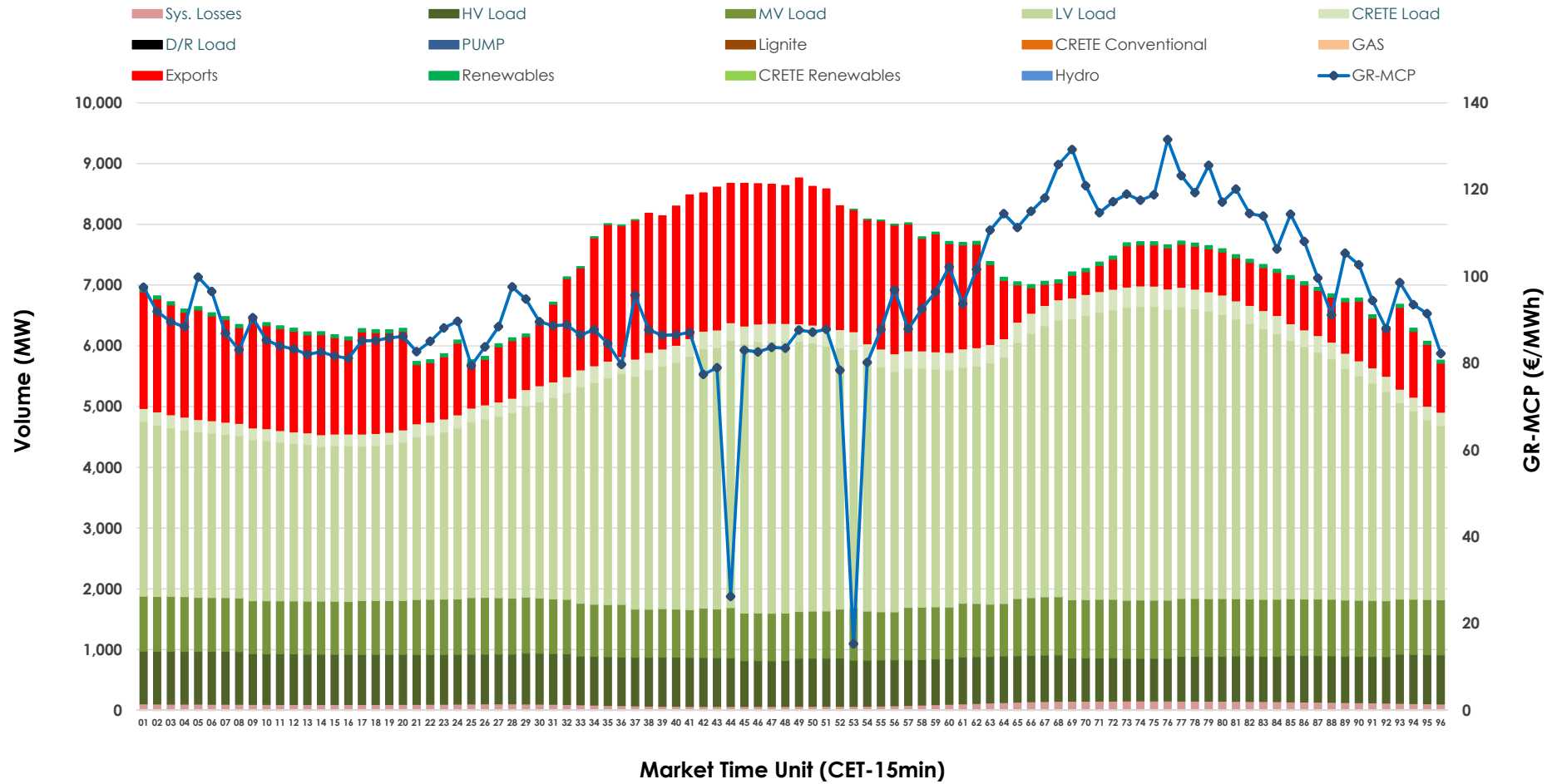


Day-Ahead Market Outlook

14.12.2025 Day-Ahead Market - Sell



14.12.2025 Day-Ahead Market - Buy



GR Bidding Zone Weekly Figures

Delivery Day	08.12	09.12	10.12	11.12	12.12	13.12	14.12
	↗ 7%	↘ -12%	↗ 22%	↘ -11%	↗ 15%	↘ -8%	↘ -7%
Avg.MCP (€/MWh)	99.18	87.53	106.94	95.64	109.82	101.20	94.47
Max.MCP (€/MWh)	136.03	156.00	162.11	179.21	175.35	126.66	131.52
Min.MCP (€/MWh)	66.58	0.00	10.00	0.00	0.20	65.77	15.34
	↗ 15%	↗ 4%	↗ -1%	↘ -3%	↗ 0%	↗ 6%	↘ -8%
Tot.Vol(GWh)	354.71	368.43	364.77	354.50	353.56	374.57	345.33

Trades by Order Type

Delivery Day		08.12	09.12	10.12	11.12	12.12	13.12	14.12	
Ord Price Type		Sell & Buy Trades in (GWh) per Price Type							(%)
PPT	(S)	60.873	62.032	56.263	64.264	68.396	77.644	72.135	41.78%
HBD	(S)	63.948	68.355	61.887	59.958	55.228	63.172	57.620	33.37%
BLK	(S)	45.919	53.814	61.392	50.069	47.529	46.314	41.476	24.02%
CPL	(S)	6.613	0.012	2.843	2.959	5.630	0.155	1.432	0.83%
PPT	(B)	15.134	14.801	14.512	14.935	14.984	15.276	12.717	7.36%
HBD	(B)	135.911	141.029	144.536	141.860	143.160	140.803	134.764	78.05%
BLK	(B)	0.000	0.000	0.000	0.000	0.000	0.000	0.000	0.00%
CPL	(B)	26.308	28.384	23.337	20.455	18.638	31.206	25.183	14.58%
		Sell & Buy Orders Traded per Price Type							(%)
PPT	(S)	1683	1684	1767	1809	1867	1872	1843	41.60%
HBD	(S)	2532	2546	2632	2541	2598	2595	2569	57.99%
BLK	(S)	20	21	21	18	23	23	18	0.41%
PPT	(B)	2302	2322	2260	2287	2287	2270	2222	34.98%
HBD	(B)	4083	4267	4211	4298	4233	4087	4131	65.02%
BLK	(B)	0	0	0	0	0	0	0	0.00%

MCP	Market Clearing Price (€/MWh)
PPT	Priority Price-Taking
HBD	Hybrid
BLK	Block
CPL	Market Coupling Flow

Trade's Volume Mix

		Sell - MWh	Buy - MWh	
Lignite	(4.7%)	8,056	0	(0.0%)
Crete Conv.	(1.2%)	2,156	0	(0.0%)
Gas	(44.6%)	77,008	0	(0.0%)
Hydro	(5.9%)	10,106	0	(0.0%)
Imports	(4.0%)	6,836		
RES	(37.8%)	65,216	894	(0.5%)
Crete RES	(1.9%)	3,286	0	(0.0%)
HV Load	(0.0%)	0	18,922	(11.0%)
MV Load	(0.0%)	0	21,260	(12.3%)
LV Load	(0.0%)	0	88,859	(51.5%)
Crete Load	(0.0%)	0	6,450	(3.7%)
Pumping	(0.0%)	0	0	(0.0%)
Exports			33,690	(19.5%)
Sys.Losses	(0.0%)	0	2,588	(1.5%)
D/R Load	(0.0%)	0	0	(0.0%)

