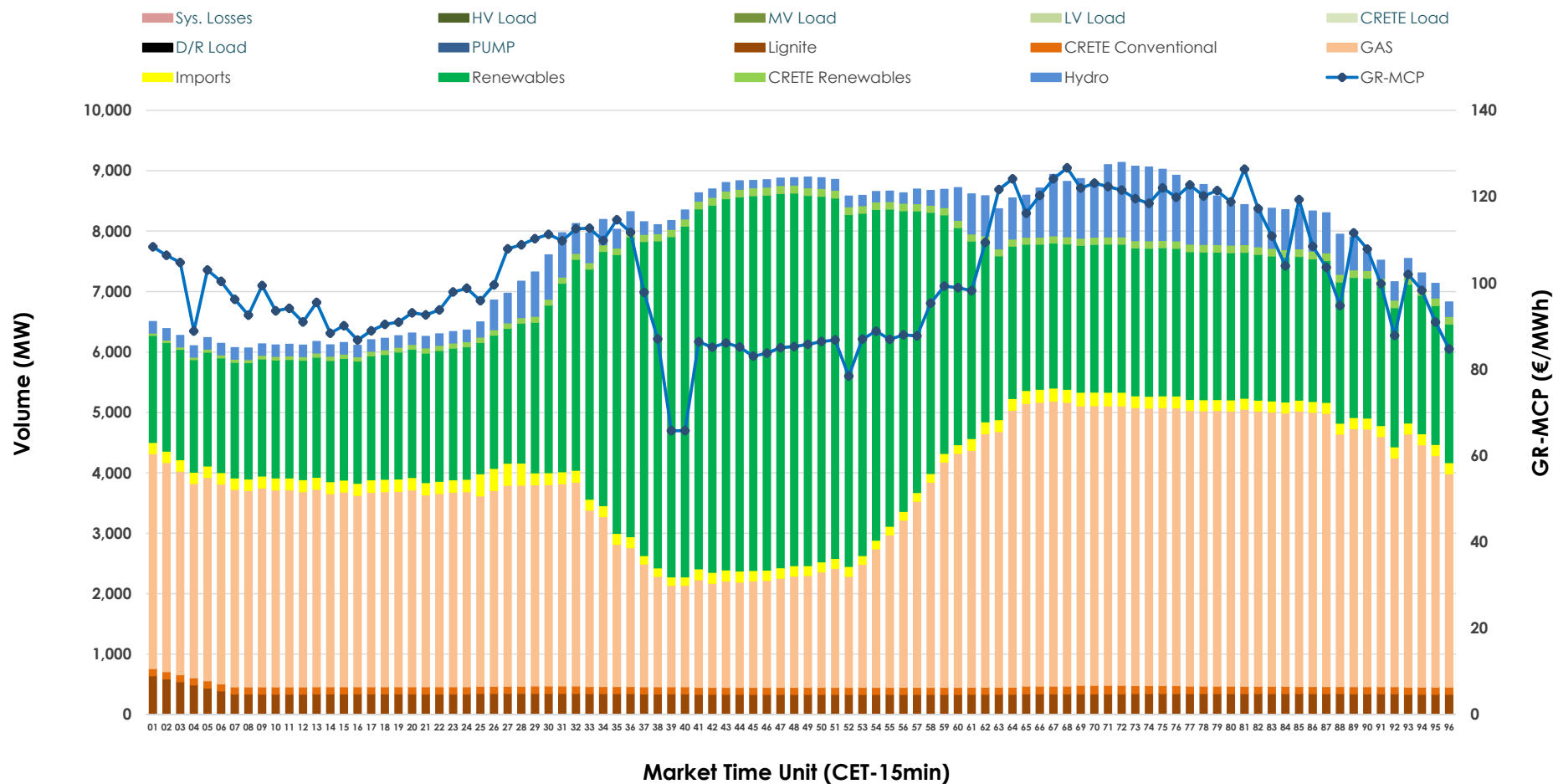


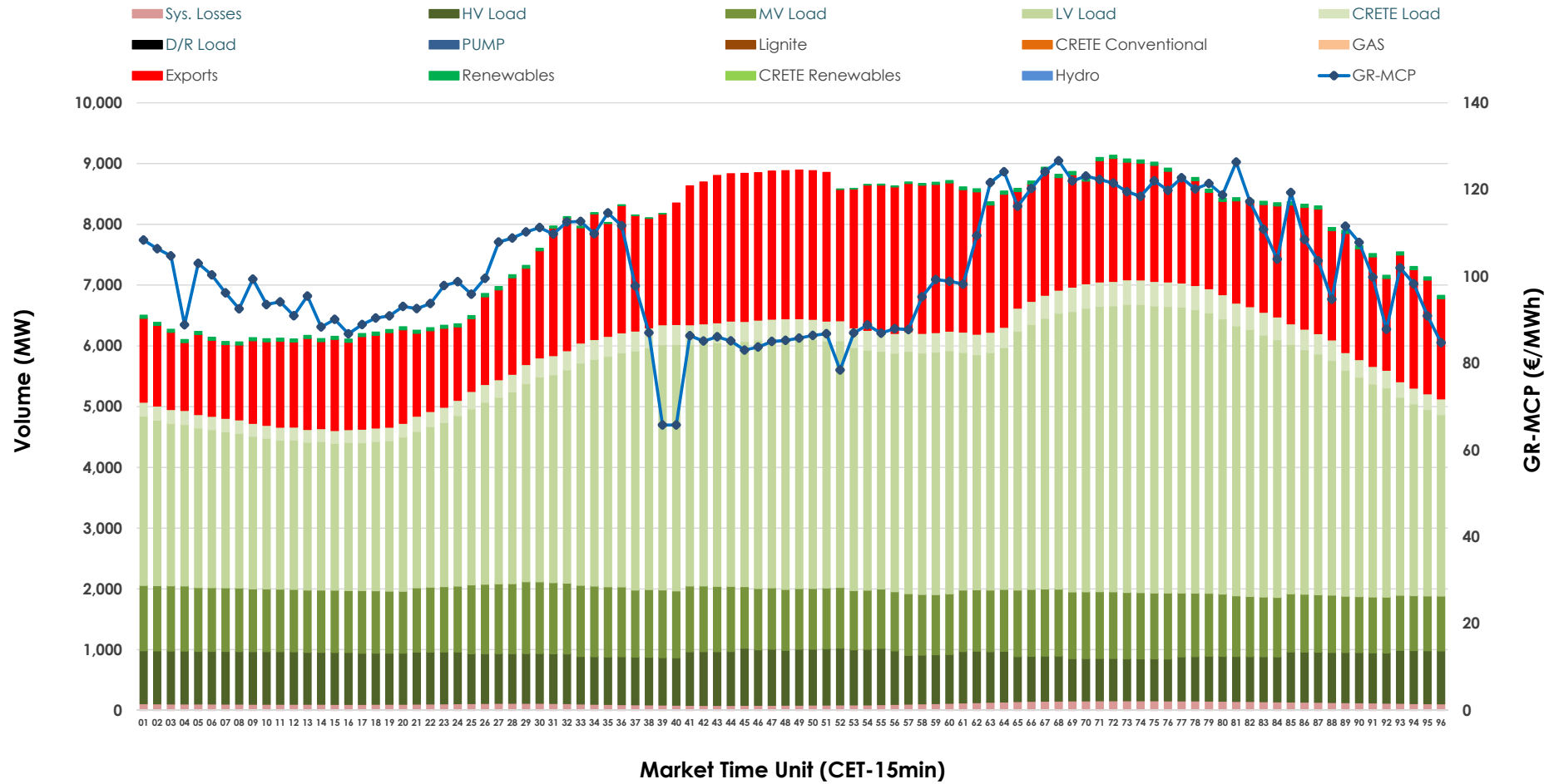


Day-Ahead Market Outlook

13.12.2025 Day-Ahead Market - Sell



13.12.2025 Day-Ahead Market - Buy



GR Bidding Zone Weekly Figures

Delivery Day	07.12	08.12	09.12	10.12	11.12	12.12	13.12
	⬇️ -9%	⬆️ 7%	⬇️ -12%	⬆️ 22%	⬇️ -11%	⬆️ 15%	⬇️ -8%
Avg.MCP (€/MWh)	92.44	99.18	87.53	106.94	95.64	109.82	101.20
Max.MCP (€/MWh)	120.83	136.03	156.00	162.11	179.21	175.35	126.66
Min.MCP (€/MWh)	63.96	66.58	0.00	10.00	0.00	0.20	65.77
	➡️ 0%	⬆️ 15%	⬆️ 4%	➡️ -1%	⬇️ -3%	➡️ 0%	⬆️ 6%
Tot.Vol(GWh)	309.78	354.71	368.43	364.77	354.50	353.56	374.57

Trades by Order Type

Delivery Day		07.12	08.12	09.12	10.12	11.12	12.12	13.12	
Ord Price Type		Sell & Buy Trades in (GWh) per Price Type							(%)
PPT	(S)	55.537	60.873	62.032	56.263	64.264	68.396	77.644	41.46%
HBD	(S)	54.266	63.948	68.355	61.887	59.958	55.228	63.172	33.73%
BLK	(S)	39.887	45.919	53.814	61.392	50.069	47.529	46.314	24.73%
CPL	(S)	5.201	6.613	0.012	2.843	2.959	5.630	0.155	0.08%
PPT	(B)	13.368	15.134	14.801	14.512	14.935	14.984	15.276	8.16%
HBD	(B)	122.185	135.911	141.029	144.536	141.860	143.160	140.803	75.18%
BLK	(B)	0.000	0.000	0.000	0.000	0.000	0.000	0.000	0.00%
CPL	(B)	19.337	26.308	28.384	23.337	20.455	18.638	31.206	16.66%
		Sell & Buy Orders Traded per Price Type							(%)
PPT	(S)	1787	1683	1684	1767	1809	1867	1872	41.69%
HBD	(S)	2571	2532	2546	2632	2541	2598	2595	57.80%
BLK	(S)	16	20	21	21	18	23	23	0.51%
PPT	(B)	2271	2302	2322	2260	2287	2287	2270	35.71%
HBD	(B)	4095	4083	4267	4211	4298	4233	4087	64.29%
BLK	(B)	0	0	0	0	0	0	0	0.00%

MCP	Market Clearing Price (€/MWh)
PPT	Priority Price-Taking
HBD	Hybrid
BLK	Block
CPL	Market Coupling Flow

Trade's Volume Mix

		Sell - MWh	Buy - MWh	
Lignite	(4.5%)	8,430	0	(0.0%)
Crete Conv.	(1.5%)	2,896	0	(0.0%)
Gas	(43.6%)	81,730	0	(0.0%)
Hydro	(5.5%)	10,306	0	(0.0%)
Imports	(2.5%)	4,624		
RES	(41.0%)	76,735	908	(0.5%)
Crete RES	(1.4%)	2,563	0	(0.0%)
HV Load	(0.0%)	0	19,757	(10.5%)
MV Load	(0.0%)	0	25,034	(13.4%)
LV Load	(0.0%)	0	86,991	(46.4%)
Crete Load	(0.0%)	0	7,456	(4.0%)
Pumping	(0.0%)	0	0	(0.0%)
Exports			44,360	(23.7%)
Sys.Losses	(0.0%)	0	2,779	(1.5%)
D/R Load	(0.0%)	0	0	(0.0%)

