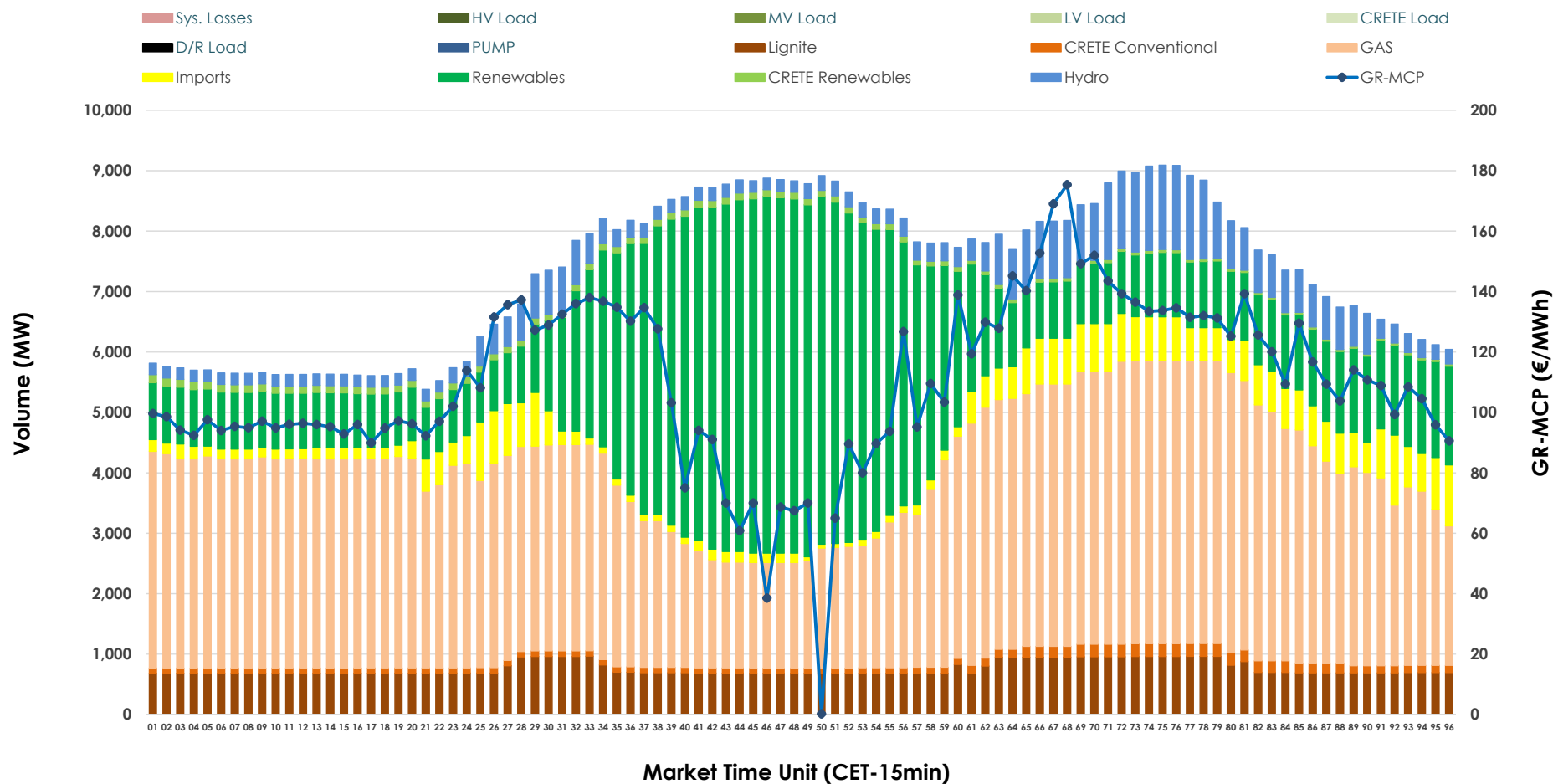


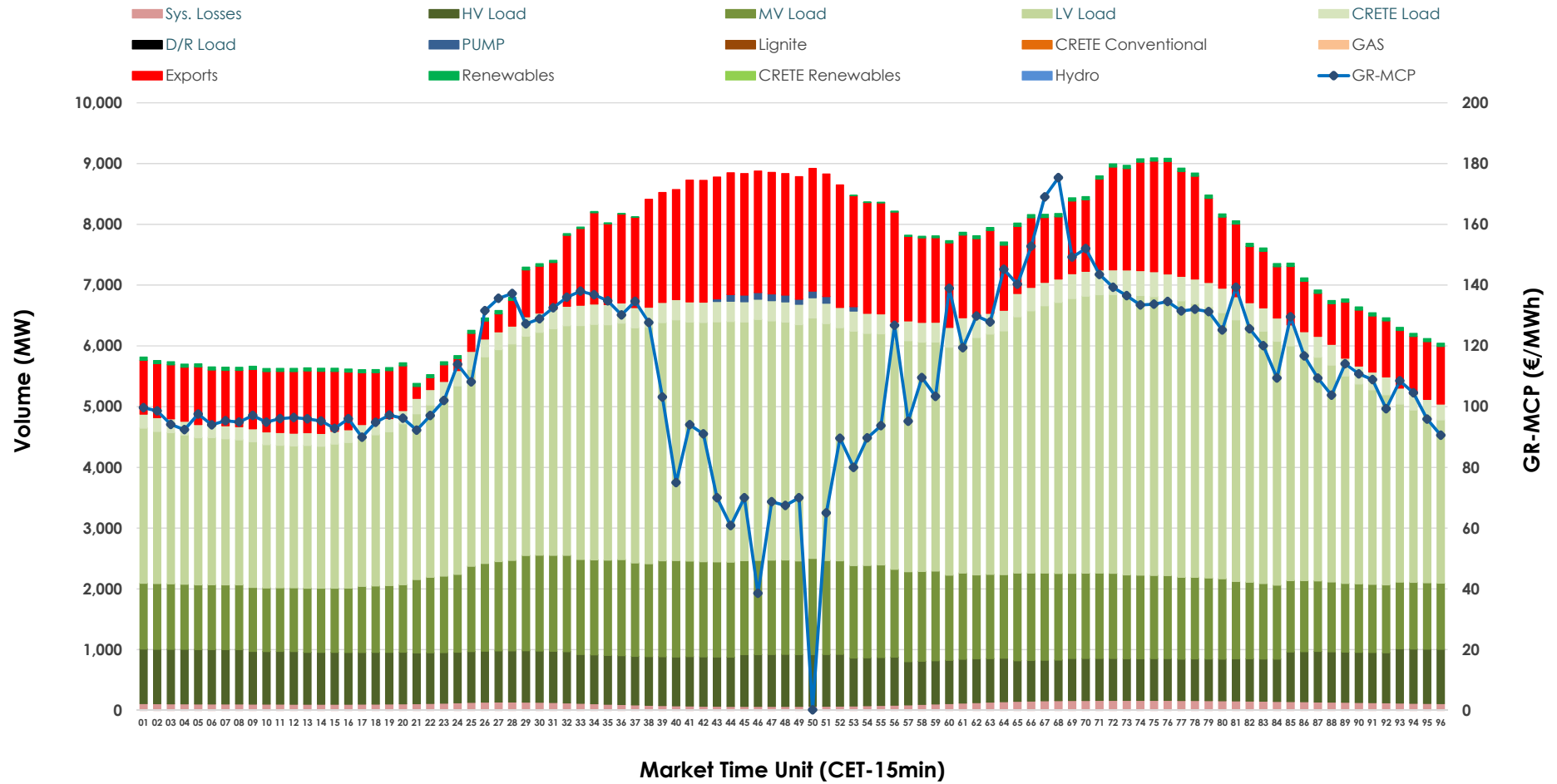


Day-Ahead Market Outlook

12.12.2025 Day-Ahead Market - Sell



12.12.2025 Day-Ahead Market - Buy



GR Bidding Zone Weekly Figures

Delivery Day	06.12	07.12	08.12	09.12	10.12	11.12	12.12
	📉 -19%	📉 -9%	📈 7%	📉 -12%	📈 22%	📉 -11%	📈 15%
Avg.MCP (€/MWh)	101.30	92.44	99.18	87.53	106.94	95.64	109.82
Max.MCP (€/MWh)	131.70	120.83	136.03	156.00	162.11	179.21	175.35
Min.MCP (€/MWh)	70.51	63.96	66.58	0.00	10.00	0.00	0.20
	📉 -10%	➡️ 0%	📈 15%	📈 4%	➡️ -1%	📉 -3%	➡️ 0%
Tot.Vol(GWh)	309.54	309.78	354.71	368.43	364.77	354.50	353.56

Trades by Order Type

Delivery Day		06.12	07.12	08.12	09.12	10.12	11.12	12.12	
Ord Price Type		Sell & Buy Trades in (GWh) per Price Type							(%)
PPT	(S)	47.984	55.537	60.873	62.032	56.263	64.264	68.396	38.69%
HBD	(S)	47.848	54.266	63.948	68.355	61.887	59.958	55.228	31.24%
BLK	(S)	48.441	39.887	45.919	53.814	61.392	50.069	47.529	26.89%
CPL	(S)	10.498	5.201	6.613	0.012	2.843	2.959	5.630	3.18%
PPT	(B)	13.331	13.368	15.134	14.801	14.512	14.935	14.984	8.48%
HBD	(B)	130.388	122.185	135.911	141.029	144.536	141.860	143.160	80.98%
BLK	(B)	0.000	0.000	0.000	0.000	0.000	0.000	0.000	0.00%
CPL	(B)	11.052	19.337	26.308	28.384	23.337	20.455	18.638	10.54%
		Sell & Buy Orders Traded per Price Type							(%)
PPT	(S)	1670	1787	1683	1684	1767	1809	1867	41.60%
HBD	(S)	2623	2571	2532	2546	2632	2541	2598	57.89%
BLK	(S)	20	16	20	21	21	18	23	0.51%
PPT	(B)	2233	2271	2302	2322	2260	2287	2287	35.08%
HBD	(B)	4091	4095	4083	4267	4211	4298	4233	64.92%
BLK	(B)	0	0	0	0	0	0	0	0.00%

MCP	Market Clearing Price (€/MWh)
PPT	Priority Price-Taking
HBD	Hybrid
BLK	Block
CPL	Market Coupling Flow

Trade's Volume Mix

		Sell - MWh	Buy - MWh	
Lignite	(10.3%)	18,243	0	(0.0%)
Crete Conv.	(1.6%)	2,844	0	(0.0%)
Gas	(44.9%)	79,415	0	(0.0%)
Hydro	(6.5%)	11,538	0	(0.0%)
Imports	(5.6%)	9,822		
RES	(29.9%)	52,894	896	(0.5%)
Crete RES	(1.1%)	2,025	0	(0.0%)
HV Load	(0.0%)	0	19,195	(10.9%)
MV Load	(0.0%)	0	31,961	(18.1%)
LV Load	(0.0%)	0	85,180	(48.2%)
Crete Load	(0.0%)	0	7,500	(4.2%)
Pumping	(0.0%)	0	243	(0.1%)
Exports			28,993	(16.4%)
Sys.Losses	(0.0%)	0	2,815	(1.6%)
D/R Load	(0.0%)	0	0	(0.0%)

