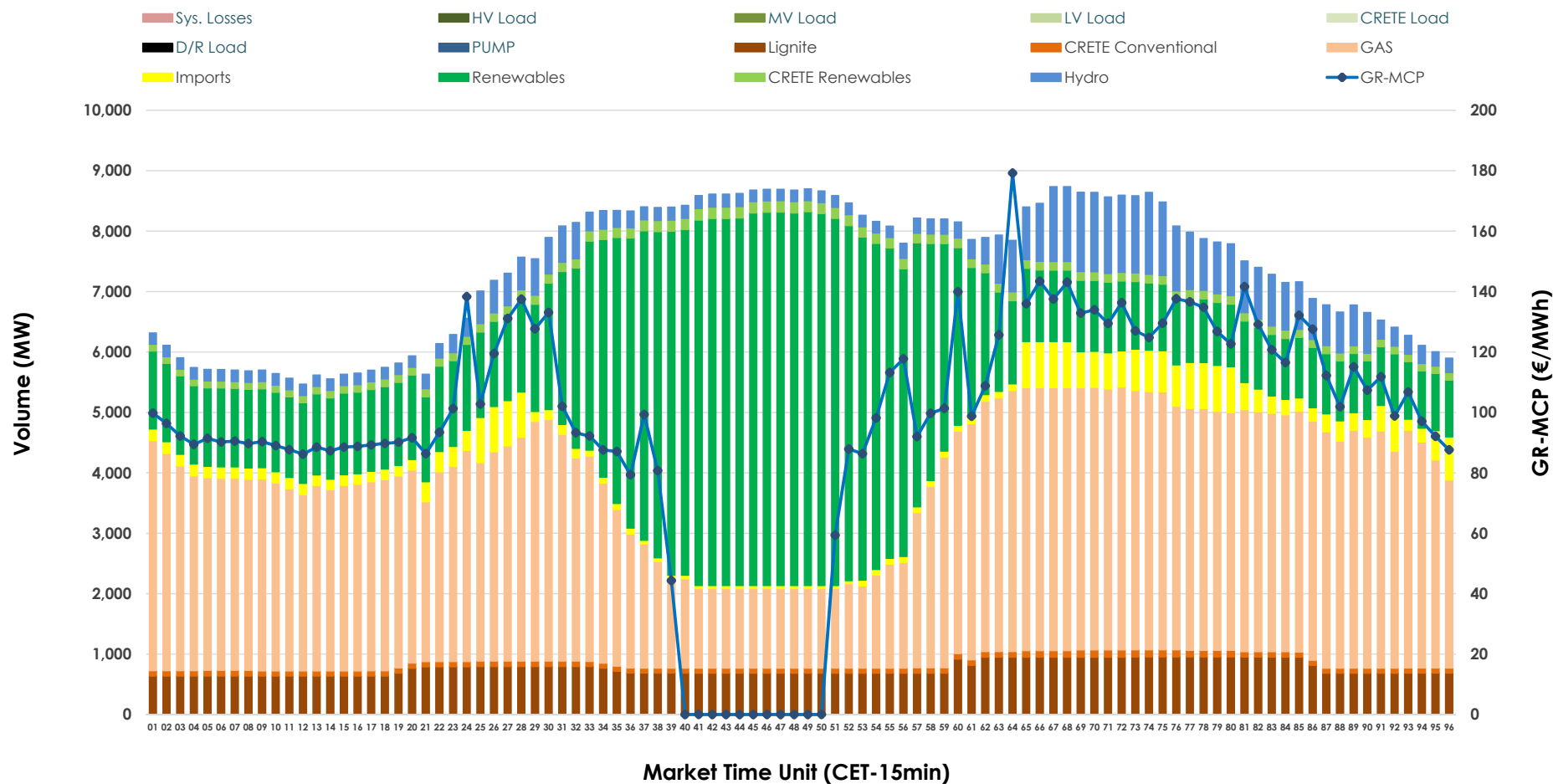


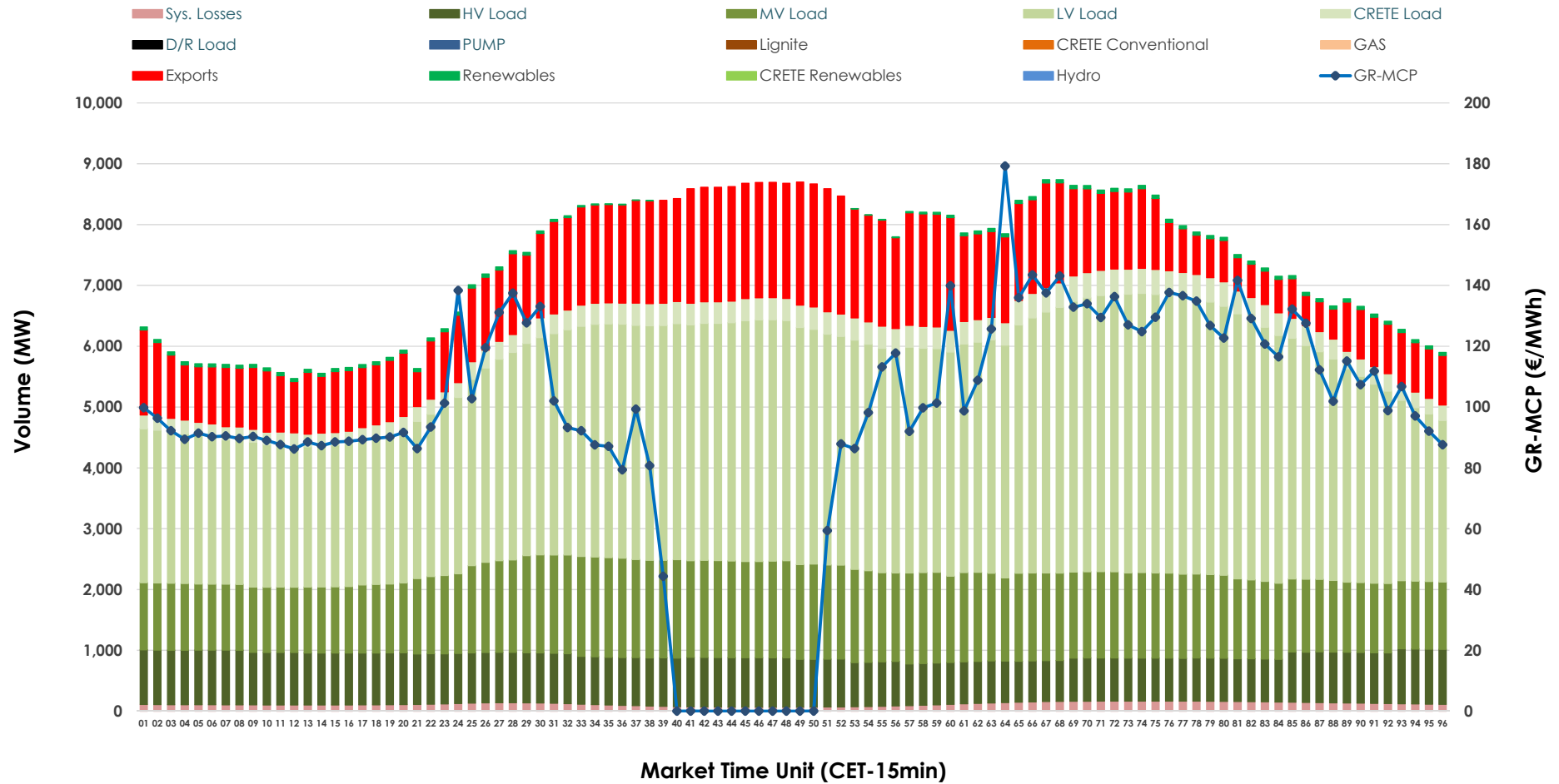


## Day-Ahead Market Outlook

11.12.2025 Day-Ahead Market - Sell



## 11.12.2025 Day-Ahead Market - Buy



### GR Bidding Zone Weekly Figures

Delivery Day	05.12	06.12	07.12	08.12	09.12	10.12	11.12
	↗ 6%	↘ -19%	↘ -9%	↗ 7%	↘ -12%	↗ 22%	↘ -11%
Avg.MCP (€/MWh)	125.14	101.30	92.44	99.18	87.53	106.94	95.64
Max.MCP (€/MWh)	171.61	131.70	120.83	136.03	156.00	162.11	179.21
Min.MCP (€/MWh)	72.35	70.51	63.96	66.58	0.00	10.00	0.00
	➡ -1%	↘ -10%	➡ 0%	↗ 15%	↘ 4%	➡ -1%	↘ -3%
Tot.Vol(GWh)	345.15	309.54	309.78	354.71	368.43	364.77	354.50

### Trades by Order Type

Delivery Day		05.12	06.12	07.12	08.12	09.12	10.12	11.12	
Ord Price Type		Sell & Buy Trades in (GWh) per Price Type							(%)
PPT	(S)	48.855	47.984	55.537	60.873	62.032	56.263	64.264	36.26%
HBD	(S)	58.591	47.848	54.266	63.948	68.355	61.887	59.958	33.83%
BLK	(S)	60.833	48.441	39.887	45.919	53.814	61.392	50.069	28.25%
CPL	(S)	4.295	10.498	5.201	6.613	0.012	2.843	2.959	1.67%
PPT	(B)	16.546	13.331	13.368	15.134	14.801	14.512	14.935	8.43%
HBD	(B)	143.672	130.388	122.185	135.911	141.029	144.536	141.860	80.03%
BLK	(B)	0.000	0.000	0.000	0.000	0.000	0.000	0.000	0.00%
CPL	(B)	12.357	11.052	19.337	26.308	28.384	23.337	20.455	11.54%
		Sell & Buy Orders Traded per Price Type							(%)
PPT	(S)	1672	1670	1787	1683	1684	1767	1809	41.41%
HBD	(S)	2746	2623	2571	2532	2546	2632	2541	58.17%
BLK	(S)	21	20	16	20	21	21	18	0.41%
PPT	(B)	2316	2233	2271	2302	2322	2260	2287	34.73%
HBD	(B)	4156	4091	4095	4083	4267	4211	4298	65.27%
BLK	(B)	0	0	0	0	0	0	0	0.00%

<b>MCP</b>	Market Clearing Price (€/MWh)
<b>PPT</b>	Priority Price-Taking
<b>HBD</b>	Hybrid
<b>BLK</b>	Block
<b>CPL</b>	Market Coupling Flow

### Trade's Volume Mix

		Sell - MWh	Buy - MWh	
Lignite	(10.3%)	18,318	0	(0.0%)
Crete Conv.	(1.2%)	2,194	0	(0.0%)
Gas	(42.8%)	75,882	0	(0.0%)
Hydro	(6.4%)	11,326	0	(0.0%)
Imports	(4.0%)	7,003		
RES	(33.3%)	59,014	899	(0.5%)
Crete RES	(2.0%)	3,514	0	(0.0%)
HV Load	(0.0%)	0	19,015	(10.7%)
MV Load	(0.0%)	0	32,618	(18.4%)
LV Load	(0.0%)	0	84,132	(47.5%)
Crete Load	(0.0%)	0	7,708	(4.3%)
Pumping	(0.0%)	0	0	(0.0%)
Exports			30,073	(17.0%)
Sys.Losses	(0.0%)	0	2,806	(1.6%)
D/R Load	(0.0%)	0	0	(0.0%)

