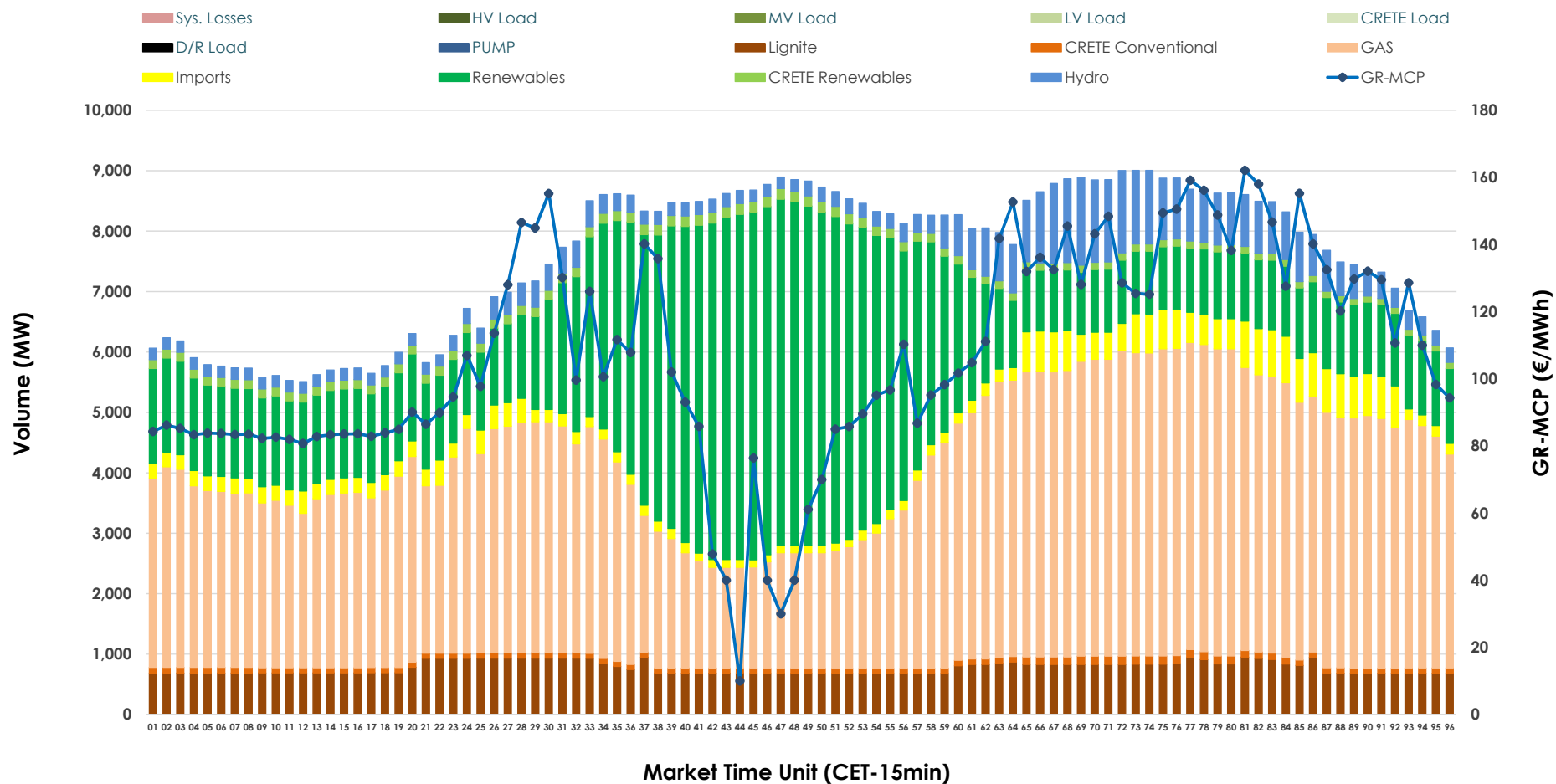


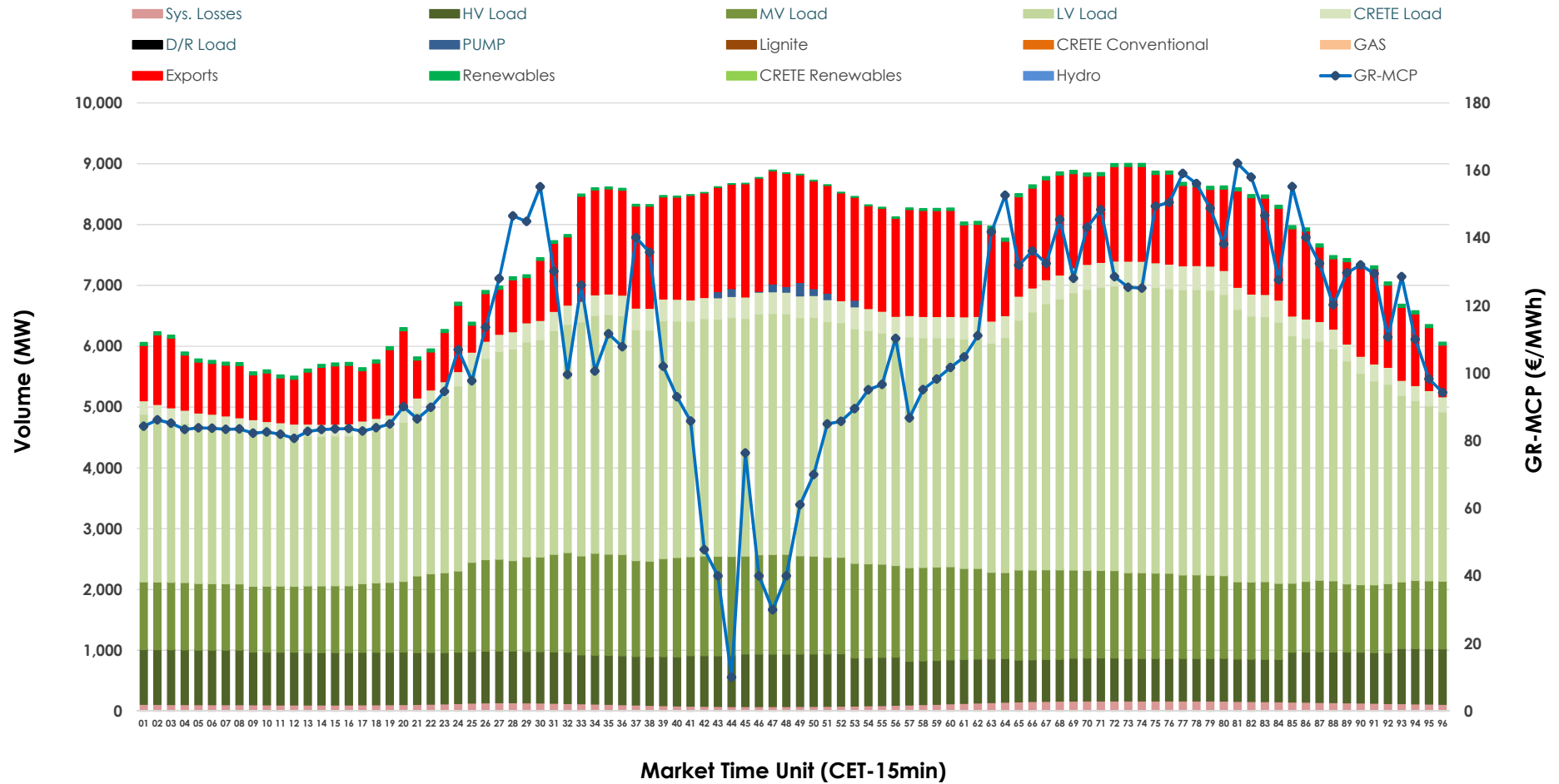


Day-Ahead Market Outlook

10.12.2025 Day-Ahead Market - Sell



10.12.2025 Day-Ahead Market - Buy



GR Bidding Zone Weekly Figures

Delivery Day	04.12	05.12	06.12	07.12	08.12	09.12	10.12
	📉 -20%	📈 6%	📉 -19%	📉 -9%	📈 7%	📉 -12%	📈 22%
Avg.MCP (€/MWh)	118.02	125.14	101.30	92.44	99.18	87.53	106.94
Max.MCP (€/MWh)	160.00	171.61	131.70	120.83	136.03	156.00	162.11
Min.MCP (€/MWh)	87.19	72.35	70.51	63.96	66.58	0.00	10.00
	📈 2%	📉 -1%	📉 -10%	📈 0%	📈 15%	📉 4%	📈 -1%
Tot.Vol(GWh)	347.06	345.15	309.54	309.78	354.71	368.43	364.77

Trades by Order Type

Delivery Day		04.12	05.12	06.12	07.12	08.12	09.12	10.12	
Ord Price Type		Sell & Buy Trades in (GWh) per Price Type							(%)
PPT	(S)	63.523	48.855	47.984	55.537	60.873	62.032	56.263	30.85%
HBD	(S)	53.686	58.591	47.848	54.266	63.948	68.355	61.887	33.93%
BLK	(S)	53.348	60.833	48.441	39.887	45.919	53.814	61.392	33.66%
CPL	(S)	2.976	4.295	10.498	5.201	6.613	0.012	2.843	1.56%
PPT	(B)	15.062	16.546	13.331	13.368	15.134	14.801	14.512	7.96%
HBD	(B)	142.637	143.672	130.388	122.185	135.911	141.029	144.536	79.25%
BLK	(B)	0.000	0.000	0.000	0.000	0.000	0.000	0.000	0.00%
CPL	(B)	15.834	12.357	11.052	19.337	26.308	28.384	23.337	12.80%
		Sell & Buy Orders Traded per Price Type							(%)
PPT	(S)	1740	1672	1670	1787	1683	1684	1767	39.98%
HBD	(S)	2565	2746	2623	2571	2532	2546	2632	59.55%
BLK	(S)	15	21	20	16	20	21	21	0.48%
PPT	(B)	2305	2316	2233	2271	2302	2322	2260	34.93%
HBD	(B)	4323	4156	4091	4095	4083	4267	4211	65.07%
BLK	(B)	0	0	0	0	0	0	0	0.00%

MCP	Market Clearing Price (€/MWh)
PPT	Priority Price-Taking
HBD	Hybrid
BLK	Block
CPL	Market Coupling Flow

Trade's Volume Mix

		Sell - MWh	Buy - MWh	
Lignite	(10.2%)	18,544	0	(0.0%)
Crete Conv.	(1.3%)	2,292	0	(0.0%)
Gas	(45.6%)	83,183	0	(0.0%)
Hydro	(6.3%)	11,419	0	(0.0%)
Imports	(4.4%)	8,014		
RES	(30.5%)	55,572	986	(0.5%)
Crete RES	(1.8%)	3,362	0	(0.0%)
HV Load	(0.0%)	0	19,383	(10.6%)
MV Load	(0.0%)	0	32,926	(18.1%)
LV Load	(0.0%)	0	86,412	(47.4%)
Crete Load	(0.0%)	0	7,530	(4.1%)
Pumping	(0.0%)	0	255	(0.1%)
Exports			31,979	(17.5%)
Sys.Losses	(0.0%)	0	2,914	(1.6%)
D/R Load	(0.0%)	0	0	(0.0%)

