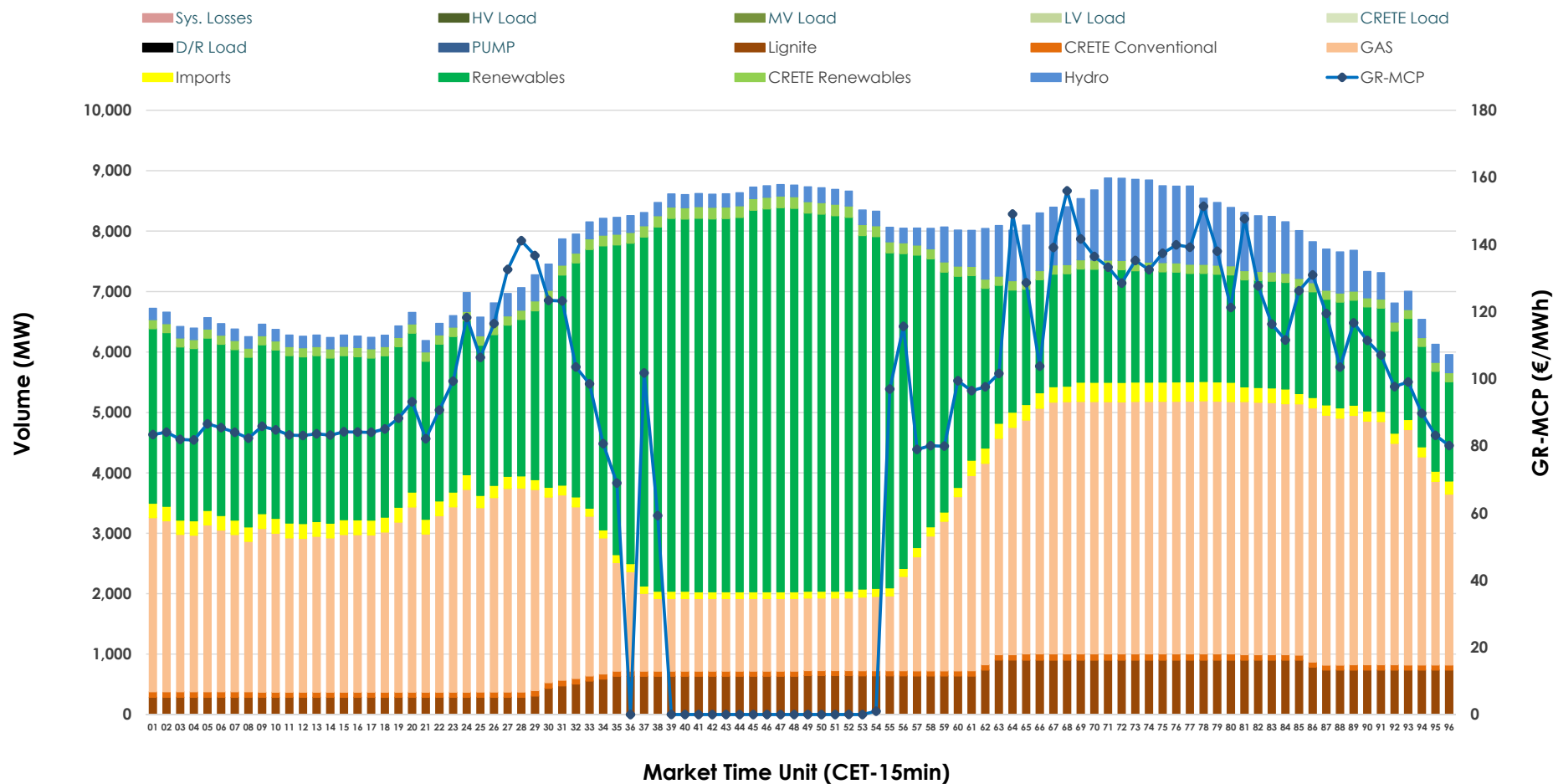


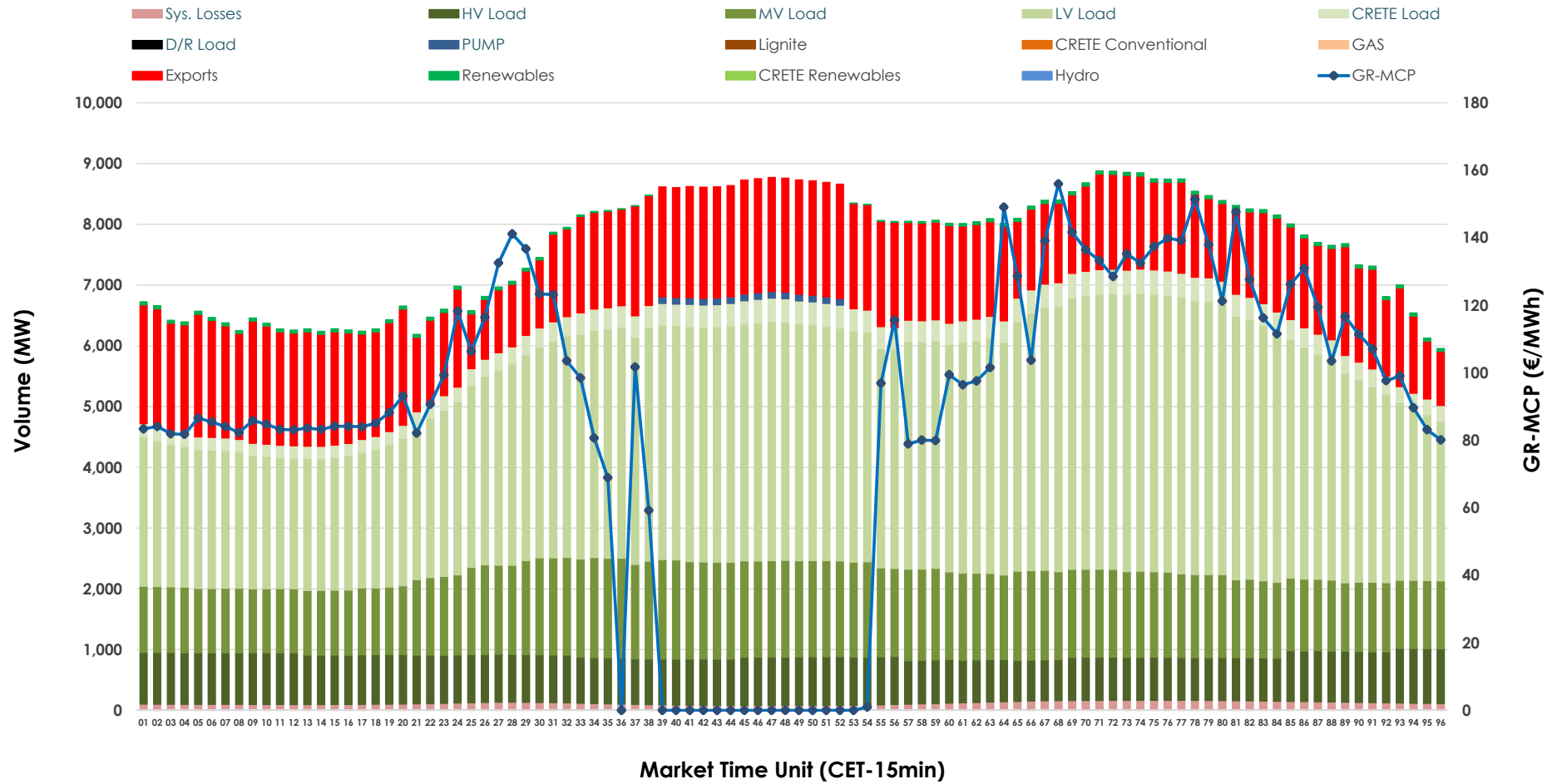


## Day-Ahead Market Outlook

09.12.2025 Day-Ahead Market - Sell



## 09.12.2025 Day-Ahead Market - Buy



### GR Bidding Zone Weekly Figures

Delivery Day	03.12	04.12	05.12	06.12	07.12	08.12	09.12
	⬆️ 18%	⬇️ -20%	⬆️ 6%	⬇️ -19%	⬆️ -9%	⬆️ 7%	⬇️ -12%
<b>Avg.MCP (€/MWh)</b>	147.20	118.02	125.14	101.30	92.44	99.18	87.53
<b>Max.MCP (€/MWh)</b>	281.94	160.00	171.61	131.70	120.83	136.03	156.00
<b>Min.MCP (€/MWh)</b>	97.38	87.19	72.35	70.51	63.96	66.58	0.00
	⬆️ 2%	⬆️ 2%	➡️ -1%	⬇️ -10%	➡️ 0%	⬆️ 15%	⬆️ 4%
<b>Tot.Vol(GWh)</b>	340.23	347.06	345.15	309.54	309.78	354.71	368.43

### Trades by Order Type

Delivery Day		03.12	04.12	05.12	06.12	07.12	08.12	09.12	
Ord Price Type		Sell & Buy Trades in (GWh) per Price Type							(%)
PPT	(S)	57.711	63.523	48.855	47.984	55.537	60.873	62.032	33.67%
HBD	(S)	55.475	53.686	58.591	47.848	54.266	63.948	68.355	37.11%
BLK	(S)	53.414	53.348	60.833	48.441	39.887	45.919	53.814	29.21%
CPL	(S)	3.517	2.976	4.295	10.498	5.201	6.613	0.012	0.01%
PPT	(B)	14.363	15.062	16.546	13.331	13.368	15.134	14.801	8.03%
HBD	(B)	141.927	142.637	143.672	130.388	122.185	135.911	141.029	76.56%
BLK	(B)	0.000	0.000	0.000	0.000	0.000	0.000	0.000	0.00%
CPL	(B)	13.827	15.834	12.357	11.052	19.337	26.308	28.384	15.41%
		Sell & Buy Orders Traded per Price Type							(%)
PPT	(S)	1830	1740	1672	1670	1787	1683	1684	39.61%
HBD	(S)	2721	2565	2746	2623	2571	2532	2546	59.89%
BLK	(S)	18	15	21	20	16	20	21	0.49%
PPT	(B)	2268	2305	2316	2233	2271	2302	2322	35.24%
HBD	(B)	4167	4323	4156	4091	4095	4083	4267	64.76%
BLK	(B)	0	0	0	0	0	0	0	0.00%

<b>MCP</b>	Market Clearing Price (€/MWh)
<b>PPT</b>	Priority Price-Taking
<b>HBD</b>	Hybrid
<b>BLK</b>	Block
<b>CPL</b>	Market Coupling Flow

### Trade's Volume Mix

		Sell - MWh	Buy - MWh	
Lignite	(7.8%)	14,416	0	(0.0%)
Crete Conv.	(1.2%)	2,145	0	(0.0%)
Gas	(37.4%)	68,922	0	(0.0%)
Hydro	(6.2%)	11,491	0	(0.0%)
Imports	(2.7%)	4,941		
RES	(42.6%)	78,422	898	(0.5%)
Crete RES	(2.1%)	3,876	0	(0.0%)
HV Load	(0.0%)	0	18,709	(10.2%)
MV Load	(0.0%)	0	32,552	(17.7%)
LV Load	(0.0%)	0	83,046	(45.1%)
Crete Load	(0.0%)	0	7,627	(4.1%)
Pumping	(0.0%)	0	385	(0.2%)
Exports			38,151	(20.7%)
Sys.Losses	(0.0%)	0	2,846	(1.5%)
D/R Load	(0.0%)	0	0	(0.0%)

