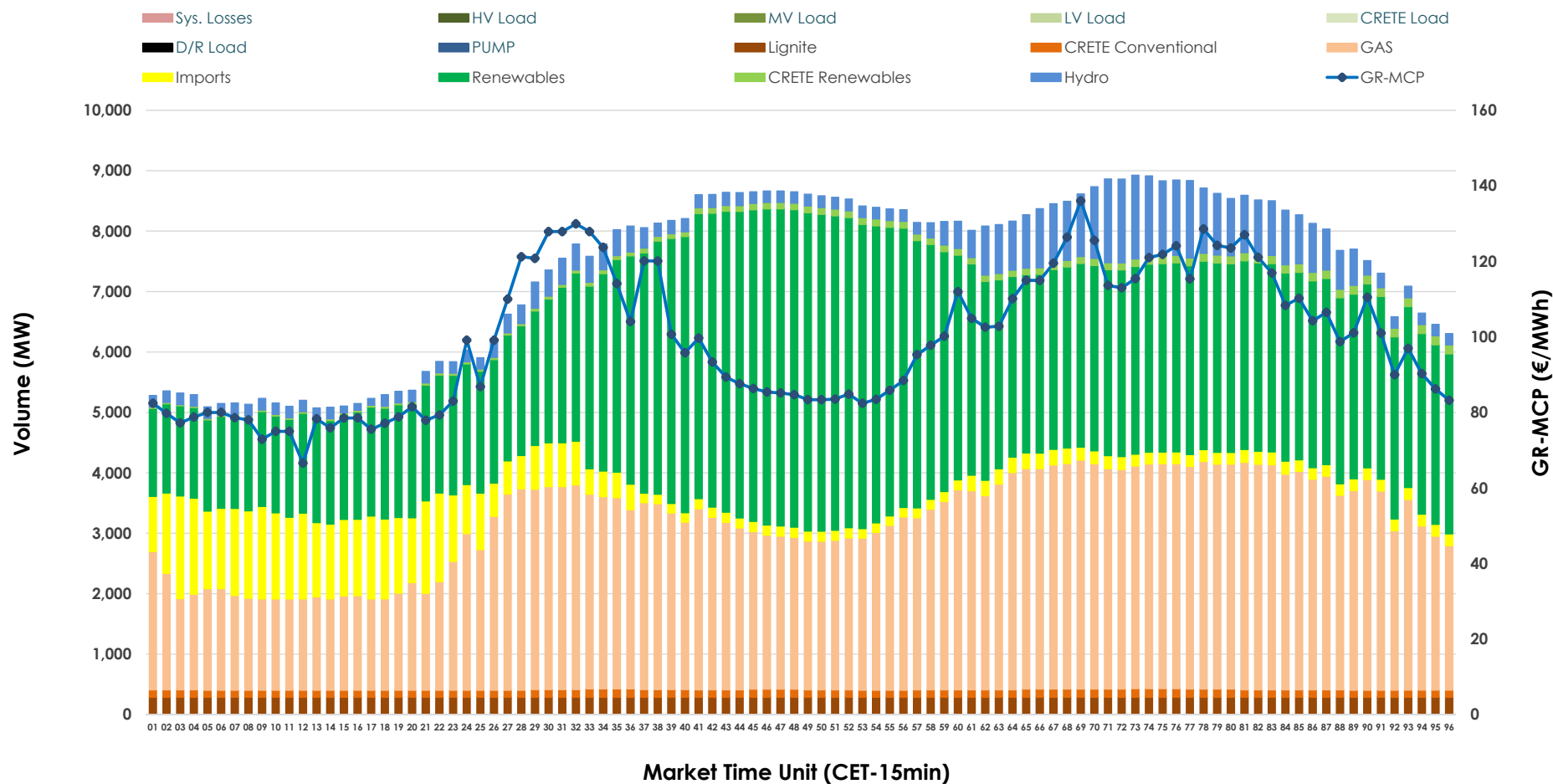


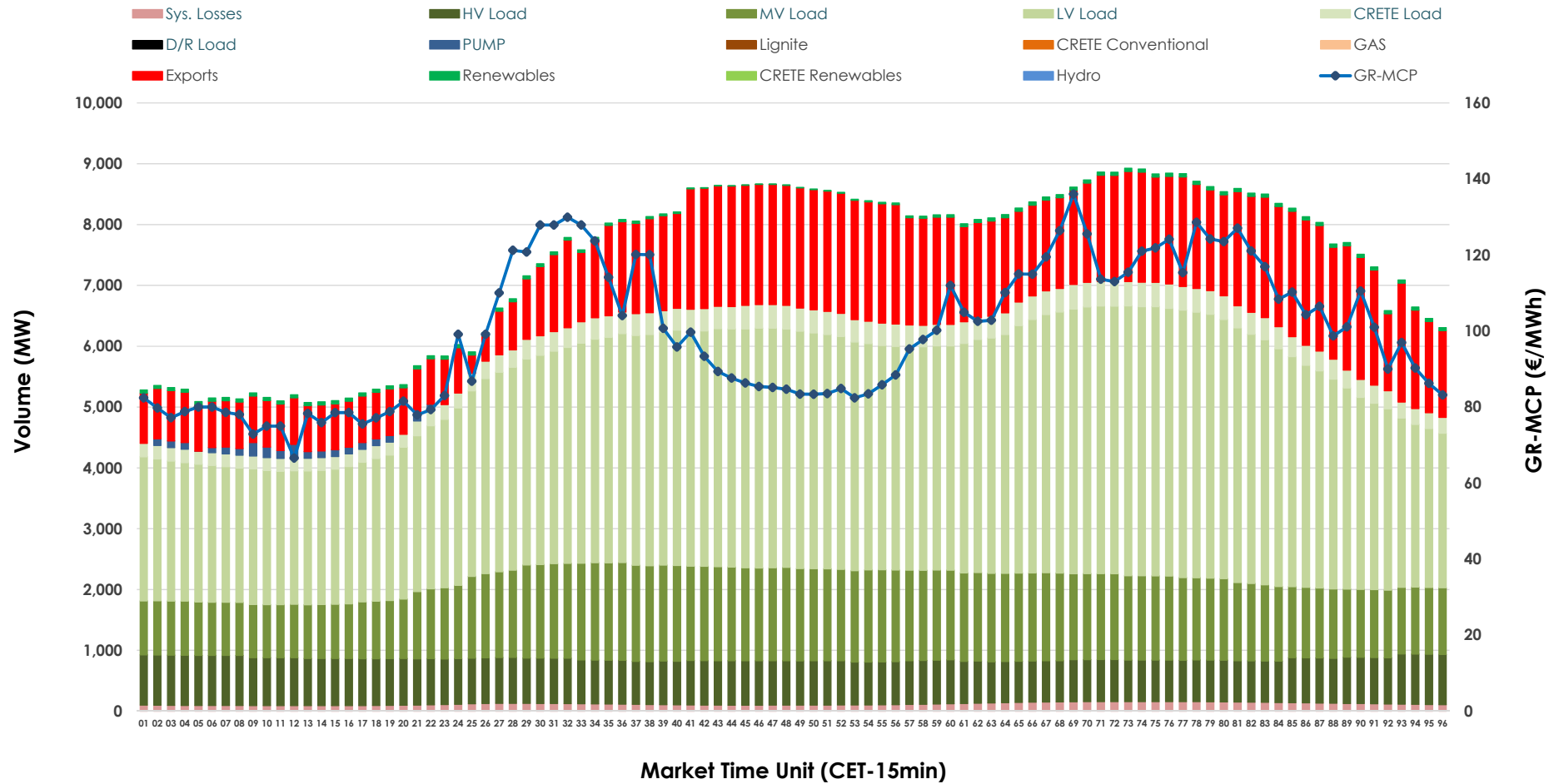


Day-Ahead Market Outlook

08.12.2025 Day-Ahead Market - Sell



08.12.2025 Day-Ahead Market - Buy



GR Bidding Zone Weekly Figures

Delivery Day	02.12	03.12	04.12	05.12	06.12	07.12	08.12
	📉 -7%	📈 18%	📉 -20%	📈 6%	📉 -19%	📉 -9%	📈 7%
Avg.MCP (€/MWh)	124.38	147.20	118.02	125.14	101.30	92.44	99.18
Max.MCP (€/MWh)	220.96	281.94	160.00	171.61	131.70	120.83	136.03
Min.MCP (€/MWh)	74.57	97.38	87.19	72.35	70.51	63.96	66.58
	➡ 0%	📈 2%	📈 2%	➡ -1%	📉 -10%	➡ 0%	📈 15%
Tot.Vol(GWh)	333.15	340.23	347.06	345.15	309.54	309.78	354.71

Trades by Order Type

Delivery Day		02.12	03.12	04.12	05.12	06.12	07.12	08.12	
Ord Price Type		Sell & Buy Trades in (GWh) per Price Type							(%)
PPT	(S)	56.816	57.711	63.523	48.855	47.984	55.537	60.873	34.32%
HBD	(S)	50.929	55.475	53.686	58.591	47.848	54.266	63.948	36.06%
BLK	(S)	52.153	53.414	53.348	60.833	48.441	39.887	45.919	25.89%
CPL	(S)	6.675	3.517	2.976	4.295	10.498	5.201	6.613	3.73%
PPT	(B)	13.692	14.363	15.062	16.546	13.331	13.368	15.134	8.53%
HBD	(B)	140.603	141.927	142.637	143.672	130.388	122.185	135.911	76.63%
BLK	(B)	0.000	0.000	0.000	0.000	0.000	0.000	0.000	0.00%
CPL	(B)	12.278	13.827	15.834	12.357	11.052	19.337	26.308	14.83%
		Sell & Buy Orders Traded per Price Type							(%)
PPT	(S)	1866	1830	1740	1672	1670	1787	1683	39.74%
HBD	(S)	2481	2721	2565	2746	2623	2571	2532	59.79%
BLK	(S)	16	18	15	21	20	16	20	0.47%
PPT	(B)	2252	2268	2305	2316	2233	2271	2302	36.05%
HBD	(B)	4134	4167	4323	4156	4091	4095	4083	63.95%
BLK	(B)	0	0	0	0	0	0	0	0.00%

MCP	Market Clearing Price (€/MWh)
PPT	Priority Price-Taking
HBD	Hybrid
BLK	Block
CPL	Market Coupling Flow

Trade's Volume Mix

		Sell - MWh	Buy - MWh	
Lignite	(3.9%)	6,840	0	(0.0%)
Crete Conv.	(1.7%)	2,992	0	(0.0%)
Gas	(38.0%)	67,400	0	(0.0%)
Hydro	(6.2%)	11,041	0	(0.0%)
Imports	(7.1%)	12,618		
RES	(41.9%)	74,372	999	(0.6%)
Crete RES	(1.2%)	2,090	0	(0.0%)
HV Load	(0.0%)	0	17,718	(10.0%)
MV Load	(0.0%)	0	31,013	(17.5%)
LV Load	(0.0%)	0	82,003	(46.2%)
Crete Load	(0.0%)	0	7,685	(4.3%)
Pumping	(0.0%)	0	592	(0.3%)
Exports			34,511	(19.5%)
Sys.Losses	(0.0%)	0	2,832	(1.6%)
D/R Load	(0.0%)	0	0	(0.0%)

